

[manuals.plus](#) /

› [Ducard](#) /

› [Ducard 3-in-1 Electric Toothbrush with Water Flosser Combo Instruction Manual](#)

Ducard toothbrush with water flosser

Ducard 3-in-1 Electric Toothbrush with Water Flosser Combo Instruction Manual

INTRODUCTION

Thank you for choosing the Ducard 3-in-1 Electric Toothbrush with Water Flosser Combo. This device is designed to provide a comprehensive oral care experience, combining the power of a sonic toothbrush with the effectiveness of a high-pressure water flosser. Please read this manual thoroughly before first use to ensure proper operation and maintenance.

WHAT'S IN THE BOX

Carefully unpack your Ducard 3-in-1 Electric Toothbrush with Water Flosser Combo and ensure all items are present:

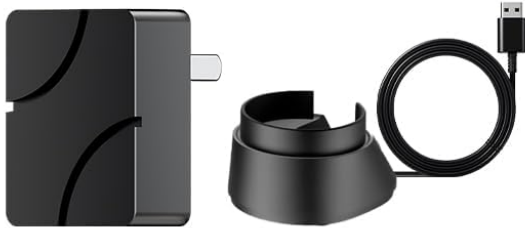
WHAT'S IN A BOX



1 Brush Handle



3 Brush Heads



1 Power Plug



1 Travel Case



Image showing the contents of the Ducard Electric Toothbrush with Water Flosser Combo box, including the brush handle, multiple brush heads, power plug, and travel case.

- 1 x Electric Toothbrush Handle
- 3 x Brush Heads
- 1 x Power Plug (Charging Base)
- 1 x Travel Case
- 1 x Instruction Manual

SETUP

1. Initial Charging

Before first use, fully charge the device. The detachable handle can be charged directly, or the entire base unit can be plugged in. The built-in long-lasting battery ensures weeks of cordless use on a single charge.



Image illustrating the two charging methods for the Ducard Electric Toothbrush with Water Flosser Combo: direct charging of the handle and charging the base unit.

2. Attaching Brush Head or Flosser Tip

Select your desired brush head or flosser tip. Align it with the metal shaft on the handle and push down firmly until it clicks into place. To remove, pull the head straight off.

Video demonstrating how to attach the flosser tip and brush head to the Ducard Electric Toothbrush with Water Flosser Combo.

3. Filling the Water Tank

The device features a large 500mL (17oz) water tank. Detach the tank from the base unit and fill it with lukewarm water. Reattach the tank securely to the base unit, ensuring it is properly seated to prevent leaks.



Image showing the large 500ml (17oz) water tank being filled from a faucet, highlighting its capacity and ease of refilling.

OPERATING INSTRUCTIONS

1. Power On/Off and Mode Selection

Press and hold the power button to turn the device on or off. Once on, single-click the mode button to cycle through the 3 brushing modes (Whitening, Sensitive, Gum Care) and 5 flosser speeds. The device combines a powerful sonic brush (40,000 VPM) and a high-pressure flosser (1,400-1,800 pulses/minute, 40-100 PSI).

INTELLIGENT BRUSHING EXPERIENCE

Brush

Floss



Brush

3 Mission Modes



Floss

Quick Floss



Speed

5 Speed Settings



Image detailing the control panel of the Ducard Electric Toothbrush, showing buttons for Brush, Floss, and Speed, along with indicators for 3 brushing modes and 5 flossing speeds.

2. Combined Brush and Floss Functionality

The 3-in-1 design allows for simultaneous brushing and flossing, providing a complete clean in half the time. This feature is up to 2X as effective as regular brushing and flossing.

3 in 1 Flossing Toothbrush Combo

Combines sonic toothbrush and water flosser

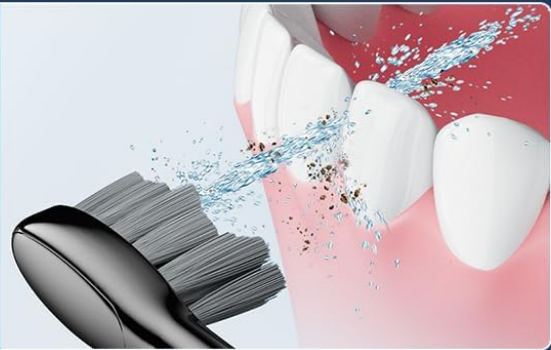


Toothbrush

Clean all tooth surfaces

Water Flosser

Effectively removes
5X more teeth stains



Brush + Water Flosser

Toothbrush can spray
water and brush your
teeth at the same time

Image illustrating the 3-in-1 functionality of the Ducard device, showing separate toothbrush and water flosser actions, and a combined brush + water flosser action for comprehensive cleaning.

3. Smart Timer & Quadpacer

The built-in 2-minute timer with a 30-second pacer ensures you brush all sides of your mouth evenly and for the dentist-recommended duration.

SMART TIMER QUADPACER DESIGN

Help to brush the right way



Image depicting the smart timer and quadpacer feature, showing a 2-minute brushing cycle divided into four 30-second intervals for thorough cleaning of all mouth quadrants.

MAINTENANCE & CLEANING

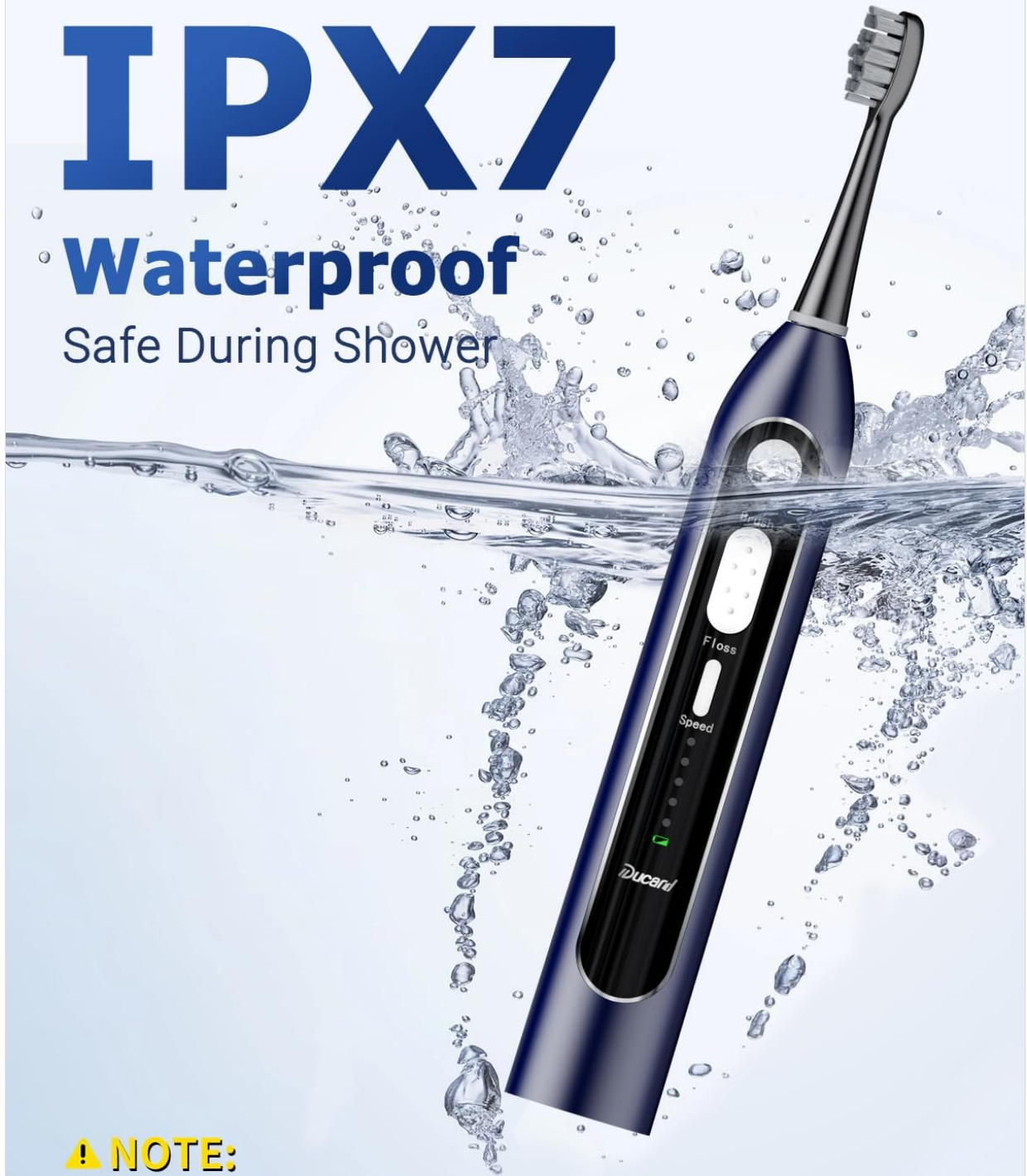
1. Waterproof Design

The device features an IPX7 waterproof design, making it safe for use in the shower. Always ensure the base cover is closed tightly to maintain its waterproof integrity.

IPX7

Waterproof

Safe During Shower



⚠ NOTE:

Make sure the base cover is closed tightly

Image showing the Ducard Electric Toothbrush submerged in water, demonstrating its IPX7 waterproof rating for safe use in the shower, with a note to ensure the base cover is closed tightly.

2. Cleaning the Water Tank

The 500mL water tank is removable for easy filling and cleaning. Regularly clean the tank to prevent mineral buildup and ensure hygienic use.

3. Brush Head Replacement

Replace brush heads every 3 months, or sooner if bristles become frayed, to maintain optimal cleaning performance.

TROUBLESHOOTING

- **Device not turning on:** Ensure the device is fully charged. If charging, check the power connection.
- **Water not flowing:** Check if the water tank is filled and properly seated. Ensure the flosser tip is securely attached.
- **Weak water pressure:** Adjust the flosser speed settings. Ensure the flosser tip is not clogged.
- **Excessive leaking:** Ensure the water tank is properly attached and the base cover is tightly closed.

SPECIFICATIONS

- **Package Dimensions:** 8.98 x 6.02 x 5.91 inches; 1.76 Pounds
- **Item Model Number:** toothbrush with water flosser
- **Batteries:** 1 AAA batteries required (included)
- **Brand:** Ducard
- **Power Source:** Battery Powered
- **Special Features:** Ergonomic, Portable, Waterproof, Rechargeable
- **Product Benefits:** Removes Plaque
- **Unit Count:** 1 Count

WARRANTY & SUPPORT

Your Ducard 3-in-1 Electric Toothbrush with Water Flosser Combo comes with dedicated customer support. For detailed warranty information, product registration, or assistance with any issues, please visit the official Ducard website or contact customer service through your purchase platform.