

## Blackvue DR770X-2CH II

# BlackVue DR770X-2CH II Dash Cam User Manual

Model: DR770X-2CH II | Brand: BlackVue

## 1. INTRODUCTION

This manual provides detailed instructions for the installation, operation, and maintenance of your BlackVue DR770X-2CH II Dash Cam. Please read this manual thoroughly before using the product to ensure proper functionality and to maximize your user experience. The BlackVue DR770X-2CH II is a dual Full HD dash camera designed to record both front and rear views of your vehicle, offering enhanced visual clarity, Wi-Fi connectivity, cloud remote access, and smart parking mode features.

## 2. PRODUCT OVERVIEW AND KEY FEATURES

The BlackVue DR770X-2CH II Dash Cam is equipped with advanced technology to provide reliable vehicle surveillance. Key features include:

- **Stunning Dual Full HD Recording:** Captures crystal-clear detail with a 60fps Full HD front camera and 30fps Full HD rear camera, ensuring sharp footage from both directions for safety and event documentation.
- **Advanced Visual Clarity:** Features Sony STARVIS sensors and enhanced image tuning for high-quality video with rich detail and reduced noise. License plates and critical details are captured clearly, even in low light, utilizing efficient H.264 encoding.
- **Effortless Video Playback via Wi-Fi & Cloud:** Allows easy access and viewing of Cloud-stored videos on your smartphone via Wi-Fi, eliminating the need to remove the memory card. With a Wi-Fi hotspot or the optional CM100G LTE module (sold separately), the dashcam uploads footage to BlackVue Cloud in real-time. Enjoy Live View, Remote Playback, Auto Backup, GPS Tracking, and Push Notifications through the BlackVue App.
- **USB-C Power Cable Kit for Seamless Installation:** Enables quick setup with the included USB-C power cable, providing a secure connection, tidy cable management, and smooth vehicle integration.
- **Large Storage Capacity Up to 1TB:** Supports BlackVue microSD cards up to 1TB, allowing for extended high-resolution recording and longer Parking Mode sessions, minimizing the risk of overwriting important footage (1TB microSD card sold separately).
- **Smart Event Detection with G-Sensor & GPS (10s Pre-Event Buffer):** Automatically detects impacts,

sudden movements, and overspeeding, saving footage from 10 seconds before each event. Up to 50 files are protected from being overwritten. A built-in Supercapacitor ensures data is safely saved in case of power loss.

- **24/7 Smart Parking Surveillance:** When the vehicle is off, the dash cam enters Parking Mode to record motion or impact-triggered events. Time Lapse mode provides continuous recording while minimizing storage usage (Hardwiring required).

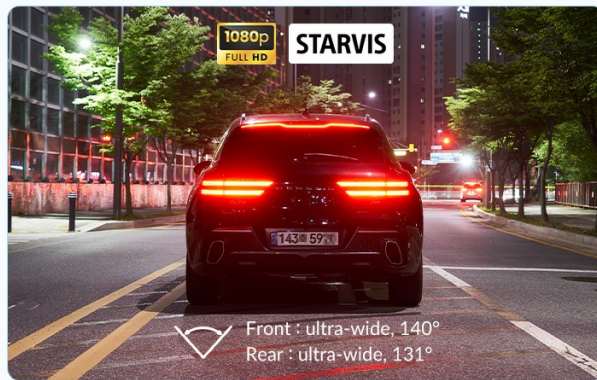
### 3. SETUP AND INSTALLATION

---

Proper installation is crucial for optimal performance of your BlackVue DR770X-2CH II Dash Cam. The system includes a front camera, a rear camera, and a USB-C power cable for connection.

#### 3.1 Front Camera Installation

Mount the front camera on the windshield, ideally behind the rearview mirror, to ensure a clear view of the road ahead without obstructing your driving visibility. Use the provided adhesive mount for a secure attachment.



#### Advanced Visual Clarity

Sony STARVIS sensors and enhanced image tuning provide vivid, **low-noise video day and night**. Key details such as license plates are recorded clearly using efficient **H.264 encoding**.

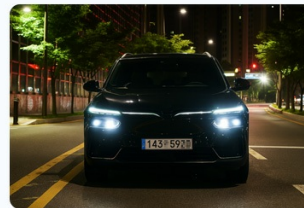


Image: The USB-C power cable kit for easy and secure installation of the dash cam.

#### 3.2 Rear Camera Installation

Install the rear camera on the rear windshield, ensuring it has an unobstructed view. Connect the rear camera to the front camera using the provided coaxial cable. Route the cable carefully along the vehicle's interior trim to keep it tidy and out of the way.

#### 3.3 Power Connection

Connect the front camera to your vehicle's power source using the included USB-C power cable. For 24/7 Smart Parking Surveillance, hardwiring the dash cam to your vehicle's fuse box is required. Refer to the full user manual for detailed hardwiring instructions or consult a professional installer.



Image: Illustration of the USB-C power cable and cigarette lighter adapter for quick and easy installation in any vehicle.

### 3.4 MicroSD Card Insertion

Insert the provided BlackVue microSD card into the designated slot on the dash cam. Ensure it is inserted correctly until it clicks into place. The dash cam supports up to 1TB microSD cards for extended recording.



Image: The dash cam with a BlackVue microSD card, illustrating its large storage capacity of up to 1TB for extended recording.

## 4. OPERATING INSTRUCTIONS

### 4.1 Automatic Recording

Once powered on, the BlackVue DR770X-2CH II automatically begins recording. It records continuously in a loop, overwriting the oldest files when the microSD card is full, unless those files are marked as event recordings.

### 4.2 Event Recording

The built-in G-Sensor detects impacts or sudden changes in speed, triggering event recordings. These recordings include a 10-second pre-event buffer and are protected from being overwritten. The dash cam can protect up to 50 event files.

## Smart Event Recording

Detects various driving events with G-sensor and GPS, **records 10 seconds before impact**, and **safely stores up to 50 event files** to prevent loss.

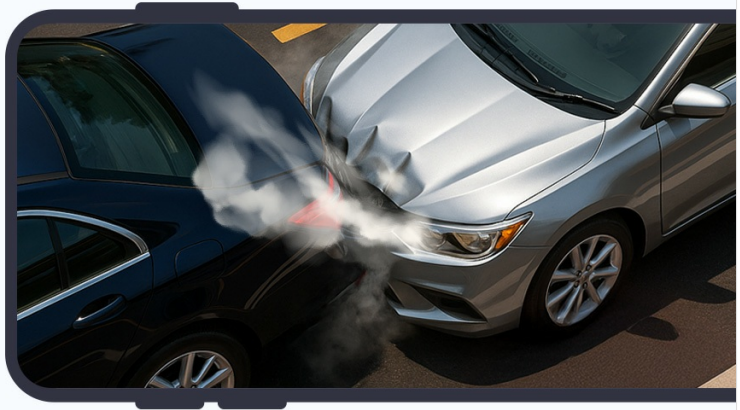


Image: Visual representation of smart event detection, showing a car collision and other driving scenarios captured by the dash cam's G-Sensor and GPS.

### 4.3 GPS Functionality

The integrated GPS module records your vehicle's speed and location data, which can be viewed during video playback using the BlackVue Viewer software or app.

### 4.4 Supercapacitor

In the event of a sudden power loss, the dash cam's supercapacitor provides enough power to safely save the current recording file before shutting down, preventing data corruption.

## 5. BLACKVUE CLOUD AND WI-FI CONNECTIVITY

---

The BlackVue DR770X-2CH II offers seamless connectivity for remote access and convenient video management.

### 5.1 Wi-Fi Connection

Connect your smartphone to the dash cam via Wi-Fi to access recorded videos, adjust settings, and view live footage. This eliminates the need to remove the microSD card for basic operations.

### 5.2 BlackVue Cloud Services

For remote access features, connect your dash cam to the BlackVue Cloud using a Wi-Fi hotspot or the optional CM100G LTE module (sold separately). Cloud features include:

- **Live View:** Monitor your vehicle in real-time from anywhere.
- **Remote Playback:** Access and play back recorded videos stored in the cloud.
- **Auto Backup:** Automatically upload important event files to the cloud.
- **GPS Tracking:** View your vehicle's location and route history.
- **Push Notifications:** Receive alerts for detected events directly on your smartphone.



## Stunning Full HD Front & Rear Recording

Capture every detail with a **60fps Full HD front** camera and **30fps Full HD rear** camera. Ideal for incident documentation and enhanced on-road visibility.



Image: A smartphone screen displaying the BlackVue app, showing connectivity to the dash cam and various cloud features like Live View and push notifications.

## Endless Loop Recording, Built to Last

Reduces SD card errors and extends lifespan - no formatting or replacements needed.



Image: An illustration of the BlackVue Cloud service, showing a smartphone connected to the dash cam with icons representing features like Live View, Push Notifications, Cloud Backup, Download Videos, Change Settings, and Firmware Update.

## 6. PARKING MODE

The BlackVue DR770X-2CH II features 24/7 Smart Parking Surveillance to protect your vehicle when it's parked.

### 6.1 Activation

Parking Mode automatically activates when the vehicle's ignition is turned off. For continuous power and full Parking Mode functionality, hardwiring the dash cam to the vehicle's power supply is necessary.

### 6.2 Recording Modes

- **Motion Detection:** Records when motion is detected by the camera.
- **Impact Detection:** Records when an impact is detected by the G-Sensor.
- **Time Lapse:** Provides continuous recording at a low frame rate, minimizing storage usage while maintaining coverage.

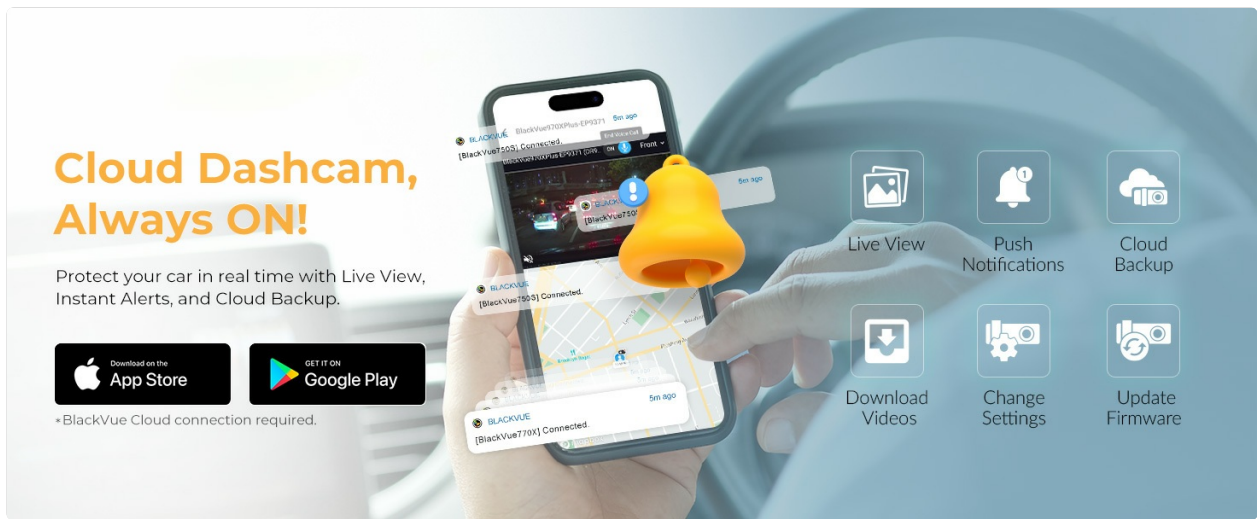


Image: A car protected by a shield icon, with smaller images below showing scenarios like a car being bumped, a person approaching the car, and a time-lapse recording of a city street at night, illustrating 24/7 Smart Parking Surveillance.

## 7. MAINTENANCE

Regular maintenance ensures the longevity and optimal performance of your dash cam.

### 7.1 MicroSD Card Management

The BlackVue DR770X-2CH II features endless loop recording, which reduces SD card errors and extends its lifespan, often eliminating the need for frequent formatting or replacements. However, it is recommended to periodically check the card's health and back up important footage.



Image: A visual representation of endless loop recording, showing a film strip with various driving scenes, emphasizing the durability and continuous recording capability of the dash cam.

### 7.2 Cleaning

Gently clean the camera lenses with a soft, lint-free cloth. Avoid using harsh chemicals that could damage the lens coating.

### 7.3 Firmware Updates

Periodically check for firmware updates via the BlackVue App or website to ensure your dash cam has the latest features and performance improvements.

## 8. TROUBLESHOOTING

If you encounter issues with your BlackVue DR770X-2CH II, refer to the following common solutions. For more detailed troubleshooting, consult the comprehensive user manual available on the BlackVue website.

- **Dash Cam Not Powering On:** Check the power cable connection to both the dash cam and the vehicle's power outlet. Ensure the vehicle's ignition is on if not hardwired.
- **Recording Issues:** Ensure the microSD card is properly inserted and not full. Try formatting the microSD card (this will erase all data). If issues persist, try a different BlackVue-approved microSD card.
- **Wi-Fi Connection Problems:** Ensure Wi-Fi is enabled on the dash cam and your smartphone. Try restarting both devices.
- **Cloud Connectivity Issues:** Verify your vehicle has an active Wi-Fi hotspot or that the optional CM100G LTE module is correctly installed and has a data plan. Check your internet connection.
- **Poor Video Quality:** Ensure camera lenses are clean. Check settings in the BlackVue App to confirm recording resolution is set to Full HD.

## 9. SPECIFICATIONS

---

Below are the technical specifications for the BlackVue DR770X-2CH II Dash Cam:

Feature	Specification
Model Name	DR770X-2CH II
Video Capture Resolution	1080p (Full HD)
Front Camera Frame Rate	60fps
Rear Camera Frame Rate	30fps
Connectivity Technology	Wi-Fi
Special Features	Dual Full HD Recording, Effortless Video Playback via Wi-Fi & Cloud, Smart Parking Mode, Sony STARVIS Sensor, USB-C Power Connection
Product Dimensions	2.4"D x 5.2"W x 1.9"H
Item Weight	1.81 pounds
Mounting Type	Mount Bracket
Color	Black





Image: A split image showing the front and rear views captured by the dash cam, highlighting the stunning dual Full HD recording at 60fps for the front and 30fps for the rear, both with STARVIS sensors.

**Dual Full HD**  
Front 60FPS  
Rear 30FPS

**Smart Parking Mode**

**CLOUD**  
BlackVue Cloud compatible

**SONY STARVIS**  
CMOS Sensor  
Front + Rear

**Seamless Pairing**

## Dual FHD Cloud Dash Cam

Image: A night scene showing a car from behind, demonstrating advanced visual clarity with Sony STARVIS sensors, capturing clear license plates even in low light. Also shows front and rear aperture and field of view details.

## Extended Storage, Maximum Peace of Mind

**Supports up to 1TB microSD cards** for longer recordings and high-resolution 4K footage - perfect for long drives and critical event capture.

Image: The sleek, cylindrical design of the BlackVue dash cam, highlighting its compact form factor and 360-degree mount for unobtrusive installation.



Accessory	DR Series II (DRXXII / PlusII)	Elite 8 Series
Power cable (3-wire) (CL-3P1)	✔ Compatible	✔ Compatible
USB-C power cable (USBC-3P)	✔ Compatible	✔ Compatible
OBD II Power Cable BOC 300	✔ Compatible	✔ Compatible
Rear-camera coax cable (CC-6/1.5/15T)	✔ Compatible	✘ Requires CC6G-6 (Elite only)
Front-camera mount/bracket	Shared among DR770X/970X Plus	Elite-specific mount (new mounting)
Rear Camera mount (RM75)	✔ Compatible	✘ Elite-specific mount (new mounting)
CPL-2 filter (CPL-2)	DR970X LTE Plus / DR970X LTE Plus II only	✔ Compatible
Tamper-Proof Case BTC 3A/ BTC 1C	Not recommended	✘ Not compatible
Tamper-Proof Case (TP-E)	✘ Not supported	✔ Elite only
B112 Battery	Supported	Supported but no parking mode
B-124X / B-130X battery	✔ Supported	✔ Supported
B-130A battery	✔ Supported	✔ Supported
Hard-wiring kits (CH 3P1/3P2)	✔ Supported	✔ Supported

Image: An illustration depicting the dash cam under a protective dome in a desert environment with a thermometer, symbolizing advanced power and heat protection features to prevent battery drain and overheating.

## 10. OFFICIAL PRODUCT VIDEO

Your browser does not support the video tag.

Video: An official BlackVue video showcasing the DR II Series dash cams, highlighting their features, design, and capabilities. This video provides a visual overview of the product line.

## 11. WARRANTY AND SUPPORT

For warranty information, please refer to the official BlackVue website or the documentation included with your product. BlackVue provides customer support for technical assistance and inquiries. You can typically find support contact details on the manufacturer's website.