



Manuals.plus /

› SNDOAS /

› SNDOAS 30-inch Under Cabinet Range Hood HQRH70475BTGSA User Manual

SNDOAS HQRH70475BTGSA

SNDOAS 30-inch Under Cabinet Range Hood

MODEL: HQRH70475BTGSA USER MANUAL

1. Introduction

This manual provides detailed instructions for the installation, operation, and maintenance of your SNDOAS 30-inch Under Cabinet Range Hood, Model HQRH70475BTGSA. Please read this manual thoroughly before installation and use to ensure proper function and safety. Keep this manual for future reference.



Image: The SNDOAS 30-inch Under Cabinet Range Hood, showcasing its sleek stainless steel design, along with the included remote control and a charcoal filter for ductless operation.

2. Safety Information

WARNING: To reduce the risk of fire, electric shock, or injury, observe the following:

- Read all instructions before operating this appliance.
- Installation work and electrical wiring must be done by qualified person(s) in accordance with all applicable codes and standards, including fire-rated construction.
- Do not operate any fan with a damaged cord or plug. Discard fan or return to an authorized service facility for examination and/or repair.
- Sufficient air is needed for proper combustion and exhausting of gases through the flue (chimney) of fuel-burning equipment to prevent back-drafting. Follow the heating equipment manufacturer's guideline and safety standards such as those published by the National Fire Protection Association (NFPA), and the American Society for Heating, Refrigeration and Air Conditioning Engineers (ASHRAE), and the local code authorities.
- When cutting or drilling into wall or ceiling, do not damage electrical wiring and other hidden utilities.
- Ducted fans must always be vented to the outdoors.
- This unit is for general ventilating use only. Do not use to exhaust hazardous or explosive materials and vapors.
- To reduce the risk of fire, use only metal ductwork.
- To reduce the risk of a range top grease fire: Never leave surface units unattended at high settings. Boilovers cause smoking and greasy spillovers that may ignite. Heat oils slowly on low or medium settings.
- Clean ventilating fans frequently. Grease should not be allowed to accumulate on fan or filter.

- Use proper pan size. Always use cookware appropriate for the size of the surface element.

3. Package Contents

Verify that all components are present before beginning installation:

- SNDOAS Under Cabinet Range Hood
- Baffle Filters (2 included)
- Installation Kit (mounting hardware, screws, etc.)
- Instruction Manual
- Remote Control
- Charcoal Filter (CF-0475, for ductless operation)

4. Setup and Installation

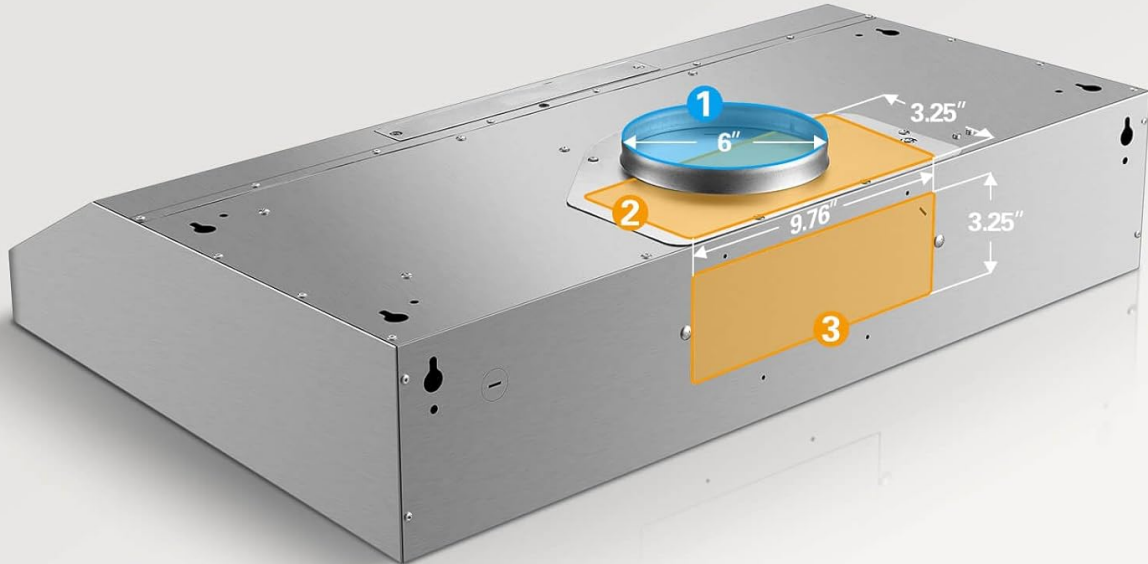
The SNDOAS range hood offers flexible installation options, supporting both ducted and ductless configurations. It comes with a standard 3-prong plug (110-120V/60Hz).

4.1 Venting Options

The unit provides three air vent options:

- **6-inch Round Top Vent:** For standard round ducting.
- **10-inch x 3.25-inch Rectangular Top Vent:** For rectangular ducting from the top.
- **10-inch x 3.25-inch Rectangular Rear Vent:** For rectangular ducting from the rear.

3 Vent Options Available



1 Top Vent Round Adaptor (6")



2 Top & back Vent Rectangle Adaptor
3 (10" x 3.25")



Image: An illustration detailing the three available vent options: a 6-inch round top vent, and 10x3.25-inch rectangular top and rear vents, providing flexibility for installation.

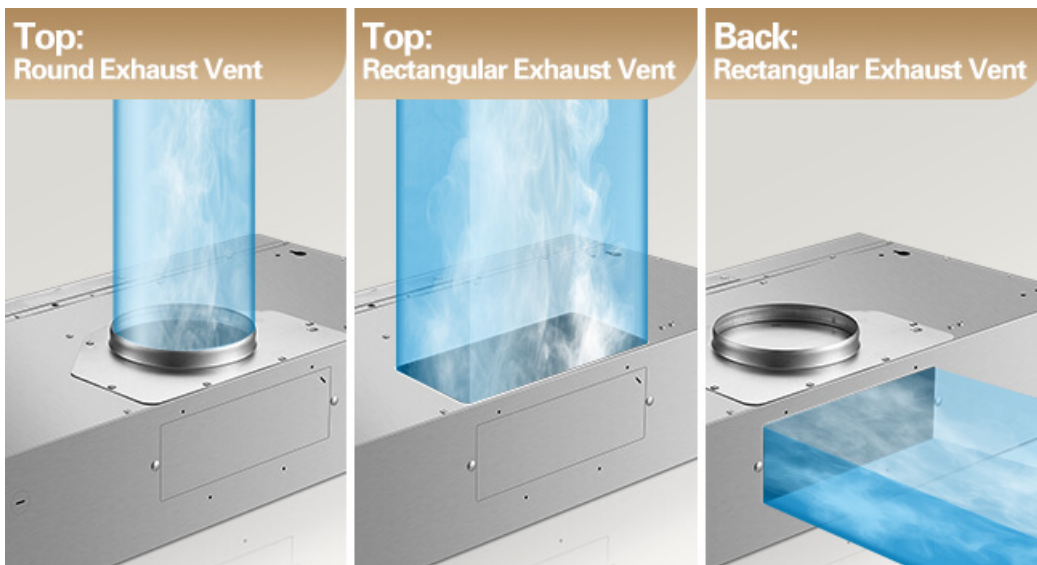


Image: A close-up view of the range hood's top and back, highlighting the different adaptors for the round and rectangular exhaust vents.

4.2 Ducted vs. Ductless Configuration

The range hood is designed for both ducted and ductless operation. For ducted use, an exhaust pipe (not included) must be attached to the chosen vent. For ductless operation, the included CF-0475 charcoal filter must be installed to recirculate filtered air back into the kitchen.



Image: A visual comparison illustrating the difference between ducted (air expelled outside) and ductless (air filtered and recirculated) range hood operations.

Ductless Range Hood

The kitchen hood comes with ductless installation as standard and includes carbon filter model #CF-0475.



Image: The range hood configured for ductless operation, clearly showing the CF-0475 charcoal filter installed, which is essential for filtering air before recirculation.

4.3 Installation Steps (General)

Refer to the detailed diagrams and instructions in the included Installation Kit for specific mounting procedures. Ensure the range hood is securely fastened under the cabinet and all electrical connections are made safely.

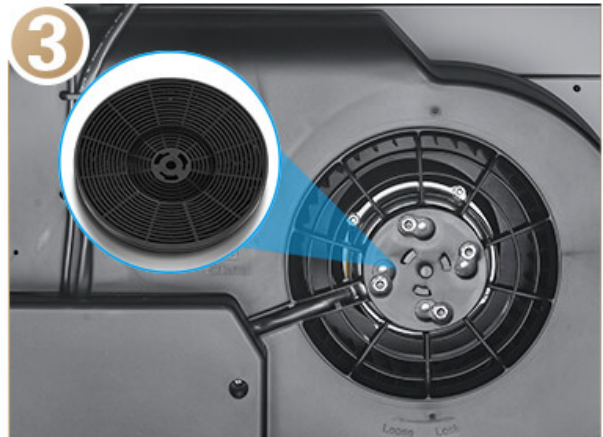
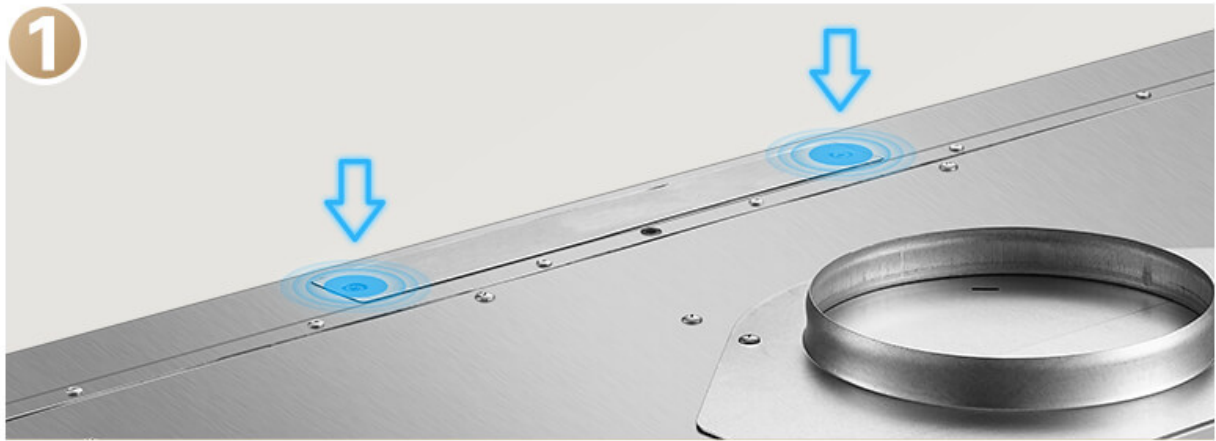


Image: An internal view of the range hood, indicating key installation points, the mechanism for switching between ductless and external venting, and the placement of the charcoal filter.

5. Operating Instructions

Your SNDOAS range hood features multiple control methods for convenience.

5.1 Control Methods: Touch, Gesture, and Remote

3 Control Methods



Image: A visual representation of the three ways to control the range hood: gesture sensing, direct touch on the control panel, and using the included remote control.



Image: Close-up views of the range hood's features, including the touch control panel, integrated LED lighting, and the standard 3-prong power plug.

5.2 Gesture Control

The range hood can be operated by hand gestures for a touch-free experience. Keep your hand 4-6 inches away from the control panel for optimal sensing.

- **Standby Mode:** Wave hand to turn on high speed and light.
- **Working Mode:** Wave hand to cycle through fan speeds (High - Mid - Low - High).
- **Working Mode:** Wave hand to start a 1-minute delay turn-off (automatically shuts down after 1 minute).
- **Delay Off Mode:** Wave hand to turn off the motor and light immediately.
- **Motor Off but Light On:** Wave hand to turn off the light.

To activate: Swipe both side sensors at the same time, on both sides at a time.

	Hood is in "Standby mode":	Turn on the high speed & light.
	Hood is in "Working mode":	Change the fan speed cyclically (High → Mid → Low → High → Mid → Low).
	Hood is in "Working mode":	Start 1 min delay turn off mode (Automatically shuts down after 1 min).
	Hood is in "Delay off mode":	Turn off the motor & light immediately.
	Hood is in "Motor off but light on":	Turn off the light.

CAUTION:
 *Keep your hand 4-6 inches away from the control panel.
 *To activate, swipe both side sensors at the same time, on both sides at a time.

Image: A detailed diagram illustrating various hand gestures and their corresponding functions for controlling the range hood, including turning on, adjusting fan speed, and activating delay off.

5.3 Touch Control

The integrated touch panel allows direct control over all functions.



Image: A close-up view of the range hood's touch control panel, displaying icons for sensor, fan speed, light, timer, and power on/off.

5.4 Remote Control

Use the included remote control for convenient operation from a distance.



Image: A diagram detailing the buttons and functions of the remote control, including power, light, fan speed adjustment, and timer settings.

5.5 Fan Speed Settings

The range hood features 3-speed settings (Low, Medium, High) to efficiently remove smoke, grease, and cooking odors. The maximum suction power is 700 CFM.

3-speed Settings to Choose from



Image: An illustration demonstrating the three fan speed settings (Low, Medium, High) and their recommended use for various cooking activities, from simmering to stir-frying.

5.6 LED Lighting

Two 2W LED lights illuminate your cooking area, providing energy-efficient lighting.

6. Maintenance

Regular maintenance ensures optimal performance and longevity of your range hood.

6.1 Baffle Filters

The two stainless steel baffle filters are designed to trap grease effectively. They are dishwasher-safe for easy cleaning. Remove filters regularly for cleaning to prevent grease accumulation.

6.2 Charcoal Filter (for Ductless Use)

If operating in ductless mode, the CF-0475 charcoal filter requires periodic replacement. Refer to the filter packaging or manufacturer guidelines for replacement frequency, typically every 3-6 months depending on usage.

6.3 Exterior Cleaning

Clean the stainless steel exterior with a soft cloth and a non-abrasive stainless steel cleaner. Avoid harsh chemicals or abrasive pads that can scratch the surface.

7. Troubleshooting

If you encounter issues with your range hood, refer to the following common problems and solutions:

Problem	Possible Cause	Solution
Fan does not turn on	No power supply; Motor or switch malfunction	Check power connection and circuit breaker. If problem persists, contact customer support.
Weak suction	Clogged filters; Improper ducting; Obstruction in vent	Clean or replace baffle filters. Check charcoal filter if ductless. Ensure ductwork is clear and properly sealed.
Excessive noise	Loose parts; Motor issue; Improper installation	Check for loose screws or components. Ensure proper installation. Contact customer support if motor noise is unusual.
Lights not working	LED bulb failure; Electrical connection issue	Check light connections. If LED is integrated, contact customer support for replacement.
Gesture control is overly sensitive or unresponsive	Interference from steam/heat; Hand too close/far; Sensor malfunction	Ensure hand is 4-6 inches from the panel. Minimize steam directly hitting the sensor. If persistent, use touch or remote control.

8. Specifications

Detailed technical specifications for the SNDOAS HQRH70475BTGSA Range Hood:



Specifications & Dimensions

The back of the hood is a little thicker than the front, the installed hood is tilt slightly downward after installation. This is a reasonable design, NOT a product defect.

Please refer to the dimension drawing for details.

Image: A diagram showing the key dimensions of the range hood (19.7"D x 29.8"W x 5.9"H) and noting that the back is slightly thicker, which is a design feature, not a defect.

Feature	Specification
Model Number	HQRH70475BTGSA
Air Flow Capacity	700 Cubic Feet Per Minute (CFM)
Material	Stainless Steel
Noise Level	66 Decibels (max)
Mounting Type	Under Cabinet Mount
Controls Type	Touch, Gesture, Remote
Voltage	120 Volts
Number of Speeds	3
Item Weight	22.4 Pounds
Light Source Type	LED (2 x 2W)
Filter Type	Baffle (Stainless Steel)
Ventilation Type	Convertible (Ducted/Ductless)
Product Dimensions	19.7"D x 29.8"W x 5.9"H
Annual Energy Consumption	200 Watts

Single Motor & Located on the Right

Up to **700 CFM** Suction Power



Image: An internal view of the range hood, highlighting the single motor located on the right side and its capability to provide up to 700 CFM suction power.

9. Warranty and Support

For warranty information, technical support, or service inquiries, please contact SNDOAS customer service. Refer to the contact information provided in your purchase documentation or on the official SNDOAS website.