

Tomofree S1PRO 14" 750w 20mph

Tomofree S1PRO Folding Electric Bike User Manual

Model: S1PRO 14" 750w 20mph

1. INTRODUCTION

This manual provides essential information for the safe operation, maintenance, and troubleshooting of your Tomofree S1PRO Folding Electric Bike. Please read this manual thoroughly before your first ride to ensure proper use and to maximize the lifespan of your e-bike.

The Tomofree S1PRO is a compact and powerful folding electric bike designed for urban commuting and leisure rides. It features a 400W brushless motor (Peak 750W), a 48V 20Ah removable battery, and a comfortable two-seater design, making it suitable for various riders and purposes.

2. SAFETY INFORMATION

Your safety is paramount. Always adhere to local traffic laws and regulations. Wear a helmet and appropriate safety gear when riding. Perform pre-ride checks, including brake function, tire pressure, and battery charge level.

- Always wear a certified helmet.
- Ensure both mechanical disc brakes are functioning correctly before each ride.
- Check tire pressure regularly.
- Do not exceed the maximum load capacity of 180 lbs.
- Be aware of your surroundings and ride defensively.
- Avoid riding in adverse weather conditions, especially heavy rain or snow, as this can affect braking and traction.
- Ensure the folding mechanism is securely locked before riding.

3. SETUP AND ASSEMBLY

The Tomofree S1PRO comes 85% pre-assembled, simplifying the setup process. A toolkit is included for the remaining assembly steps.

3.1 Included Components

Upon unboxing, verify that all components are present:

- S1PRO Commuting Electric Bike

- User Manual
- Toolkit
- Charger
- Battery Keys
- Phone Holder
- Basket
- Folding Foot Rest Pegs



Figure 3.1: Included components with the Tomofree S1PRO.

3.2 Folding and Unfolding

The S1PRO features a convenient three-step folding design for easy storage and transport. Ensure the bike is powered off before folding or unfolding.



GO **ANYWHERE** WITH YOU

The three-step folding design makes S1 easy to put in the trunk. Folded size: 29*14*22in.

Figure 3.2: The S1PRO in its folded configuration, demonstrating its compact size for transport.

The folded size is approximately 29" x 14" x 22", allowing it to fit easily into a car trunk.



Figure 3.3: Demonstrating the ease of storing the folded S1PRO in a vehicle.

4. OPERATING INSTRUCTIONS

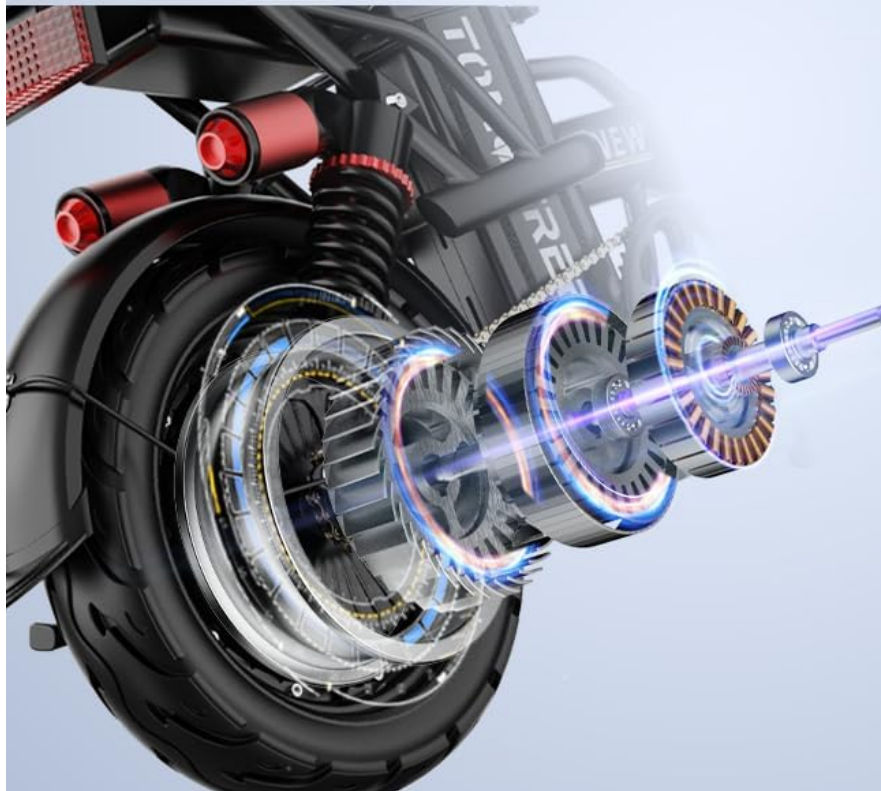
4.1 Power and Performance

The S1PRO is equipped with a 400W brushless motor, capable of reaching a peak power of 750W. This motor allows the bike to achieve speeds of up to 20 MPH and handle inclines with a gradeability of up to 25 degrees.

800W

BRUSHLESS MOTOR

Boasts a 800W brushless motor, provide you with speeds up to 20MPH



20 MPH
MAX SPEED

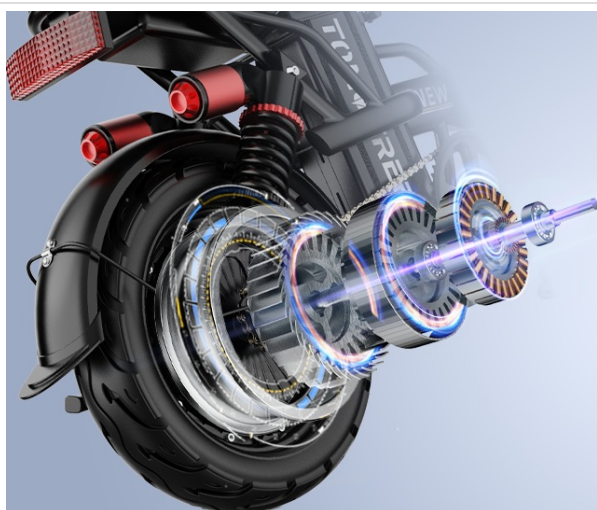


800W
PEAK MOTOR



25°
GRADEABILITY

Figure 4.1: The powerful 800W (Peak) brushless motor provides efficient and responsive propulsion.



800W BRUSHLESS MOTOR

Boasts a 800W brushless motor, provide you with speeds up to 20MPH



20 MPH
MAX SPEED



800W
PEAK MOTOR



25°
GRADEABILITY

Figure 4.2: Key performance metrics of the S1PRO's motor.

4.2 Battery and Range

The S1PRO is equipped with a 48V 20Ah removable battery, offering a range of 20-25 miles per charge. For optimal performance, ensure the battery is fully charged before extended rides.

48V 20Ah REMOVABLE BATTERY

Fast-charging, fully charges in 8 hours, provides to 31-40 miles of range per charge for your everyday riding needs.



Figure 4.3: The removable 48V 20Ah battery for convenient charging and security.



48V 20Ah
REMOVABLE BATTERY

Fast-charging, fully charges in 8 hours, provides 31-40 miles of range per charge for your everyday riding needs.

0-100%
7-8 H

BMS
Safety Protection System

2A Charger
High Power

12 Months
Warranty

Figure 4.4: Battery specifications and charging details.

4.3 Riding Modes

The S1PRO supports three riding modes:

- **Manual Mode:** Ride like a traditional bicycle using pedal power.
- **Pedal Assist Mode:** The motor provides assistance as you pedal, making rides easier, especially uphill.
- **Electric Mode:** Use the throttle for full electric power without pedaling.

4.4 Dual Seater Design

The S1PRO features a comfortable two-seater design, allowing for a passenger. Ensure the combined weight of riders does not exceed the maximum load capacity.



Figure 4.5: The S1PRO is designed for comfortable riding.



Figure 4.6: The S1PRO's design accommodates two riders.

4.5 Tires and Brakes

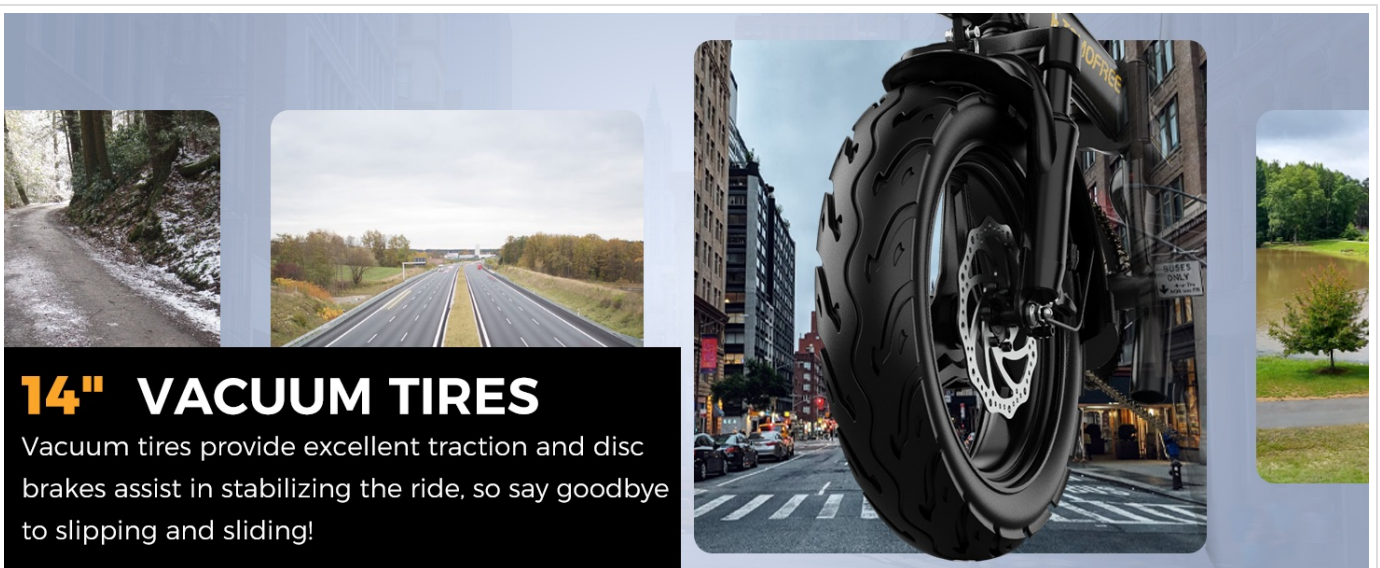
The bike is equipped with 14-inch vacuum tires, providing excellent traction across various surfaces. Dual mechanical disc brakes ensure reliable and responsive stopping power.



14" VACUUM TIRES

Vacuum tires provide excellent traction and disc brakes assist in stabilizing the ride, so say goodbye to slipping and sliding!

Figure 4.7: The 14-inch vacuum tires and dual disc brakes enhance safety and control.



14" VACUUM TIRES

Vacuum tires provide excellent traction and disc brakes assist in stabilizing the ride, so say goodbye to slipping and sliding!

Figure 4.8: Vacuum tires provide excellent traction.

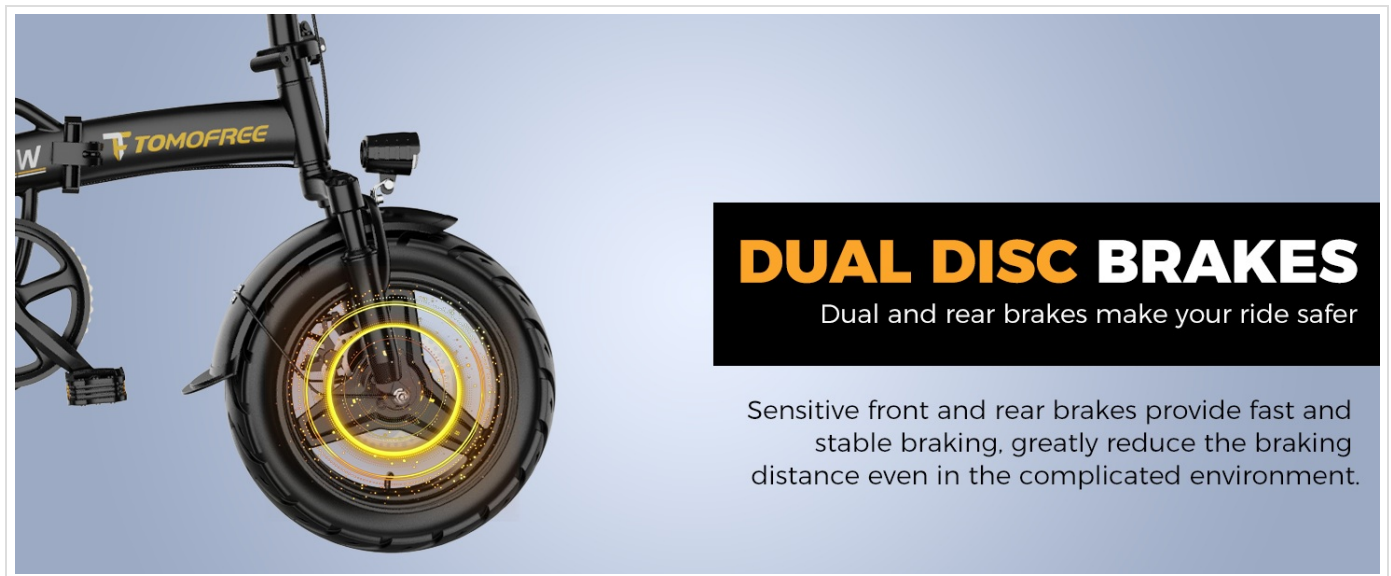


Figure 4.9: Dual disc brakes ensure fast and stable braking.

4.6 Lighting

The S1PRO includes a bright headlight to enhance visibility during night rides or in foggy conditions, improving safety.



Figure 4.10: The integrated headlight illuminates your path for safer night riding.

4.7 Suspension

The S1PRO features a rear shock absorber system, designed to provide a smoother and more comfortable ride by adapting to various terrains, including hills and gravel roads.

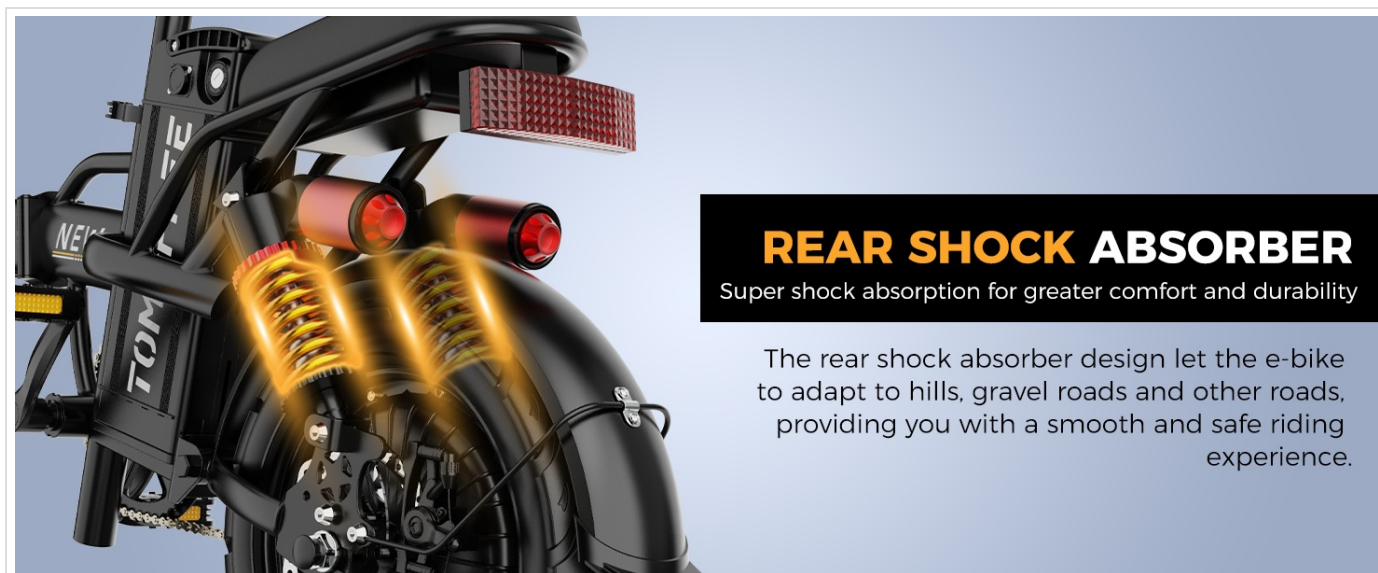


Figure 4.11: The rear shock absorber enhances ride comfort and durability.

4.8 Instructional Video

For visual guidance on the S1PRO, please refer to the official instruction video:

Your browser does not support the video tag.

Video 4.1: S1 Folding Ebike Instruction. This video provides a visual overview of the Tomofree S1PRO electric bike, showcasing its features and operation.

5. MAINTENANCE

Regular maintenance ensures the longevity and safe operation of your Tomofree S1PRO electric bike.

- **Battery Care:** Charge the 48V 20Ah battery fully in approximately 7-8 hours. Avoid completely draining the battery and store it in a cool, dry place when not in use.
- **Tire Pressure:** Check tire pressure before each ride. Maintain recommended pressure for optimal performance and safety.
- **Brake Inspection:** Regularly inspect brake pads and cables for wear. Adjust or replace as necessary to ensure effective braking.
- **Cleaning:** Clean the bike with a damp cloth. Avoid using high-pressure water jets directly on electrical components.
- **Lubrication:** Lubricate the chain and other moving parts periodically to ensure smooth operation.
- **Fasteners:** Periodically check all bolts and fasteners to ensure they are tight and secure.

6. TROUBLESHOOTING

This section addresses common issues you might encounter with your S1PRO electric bike.

Problem	Possible Cause	Solution
Bike not powering on	Battery not charged, battery not properly seated, power button not pressed.	Charge battery, ensure battery is securely installed, press and hold power button.
Motor not assisting	Low battery, pedal assist level too low, brake lever engaged.	Charge battery, increase pedal assist level, ensure brake levers are fully released.

Problem	Possible Cause	Solution
Brakes feel weak	Worn brake pads, loose brake cable, air in hydraulic system (if applicable).	Inspect and replace brake pads, adjust brake cable tension, consult a professional for hydraulic brake issues.
Unusual noises	Loose components, dry chain, motor issue.	Check all fasteners, lubricate chain, if motor noise persists, contact support.

If you encounter issues not listed here or require further assistance, please contact Tomofree customer support.

7. SPECIFICATIONS

Feature	Detail
Brand	Tomofree
Model Name	S1PRO
Motor	400W Brushless (Peak 750W)
Max Speed	20 MPH
Battery	48V 20Ah Removable
Range per Charge	20-25 miles (31-40 miles as per A+ content)
Charging Time	7-8 hours
Wheel Size	14 Inches
Tire Type	Vacuum Tires
Brake Style	Dual Mechanical Disc Brakes
Frame Material	High Carbon Steel
Suspension Type	Rear Shock Absorber
Max Load	180 Pounds
Suggested Height	5' - 6'3"
Item Weight	61.7 Pounds
Folded Dimensions	Approx. 29" x 14" x 22"
Riding Modes	Manual, Pedal Assist, Electric



Figure 7.1: Dimensions and rider suitability for the S1PRO.

8. WARRANTY AND SUPPORT

Tomofree provides a **1-year warranty** for the S1PRO electric bike. For quality problems during the warranty period, free replacement parts will be provided.

Additionally, Tomofree offers **lifetime technical support** for all its products. If you have any questions, require assistance, or need to claim warranty service, please contact Tomofree customer support.

You can find more information and guide videos on assembly and accessory replacement by searching "Tomofree" on YouTube.

For direct support, visit the [Tomofree Official Store on Amazon](#).