

Fodsports T1

Fodsports T1 Motorcycle Bluetooth Intercom User Manual

Model: T1

INTRODUCTION

This manual provides detailed instructions for the installation, operation, and maintenance of your Fodsports T1 Motorcycle Bluetooth Intercom. Please read this manual thoroughly before using the device to ensure proper function and safety.

PACKAGE CONTENTS

The Fodsports T1 package includes the following items:

- T1 Device
- Clamp
- 3M Tape Clamp
- 3M Glue Velcro
- Speaker
- Hard Tube Microphone
- Button Microphone
- USB Cable
- Sticker (5 interchangeable styles)
- Velcro (for speakers and microphone)
- Screwdriver
- User Manual



Image: Close-up view of the Fodsports T1 intercom unit, highlighting its buttons, ports, and overall design.

Switch between 5 styles

Includes 5 free stickers for easy style switching



Image: The Fodsports T1 intercom unit displayed with five different interchangeable sticker designs, allowing for personalization.

Helmet Installation

The Fodsports T1 supports installation on most helmet styles. Two mounting options are provided: a plastic clamp and a 3M adhesive clamp.

1. Speaker and Microphone Installation

1. Remove the helmet liner.
2. Tear off the Velcro backing for the speakers and stick them into the reserved headphone slots in the helmet.
3. Install the speakers in the same position.
4. Tear off the microphone's Velcro and stick it inside the helmet near the mouth position.
5. Attach the microphone and connect the cable.
6. Organize the cables neatly inside the helmet, then reinstall the helmet liner.

Note: For full-face helmets, use the soft tube microphone. For half helmets, use the hard tube microphone.

2. Main Unit Clip Installation (Plastic Clamp)

1. Take the screwdriver from the package and loosen the two screws on the clamp.
2. Attach the clamp to the left side of the helmet.
3. Tighten the screws on the clamp to secure it in place.
4. Slide the back track of the device into the clamping track until it clicks into place.
5. Insert the earphone jack into the lower port of the intercom.

3. Main Unit Clip Installation (3M Adhesive Mount)

1. Peel off the protective film from the 3M adhesive.
2. Clean the surface on the left side of the helmet where the mount will be placed.
3. Stick the 3M adhesive mount firmly onto the helmet.
4. Slide the device's back track into the clamping track.
5. Insert the earphone jack into the lower port of the intercom.

Your browser does not support the video tag.

Video: A detailed guide on how to install the Fodsports T1 intercom system onto a motorcycle helmet, covering both speaker/microphone and main unit attachment methods.

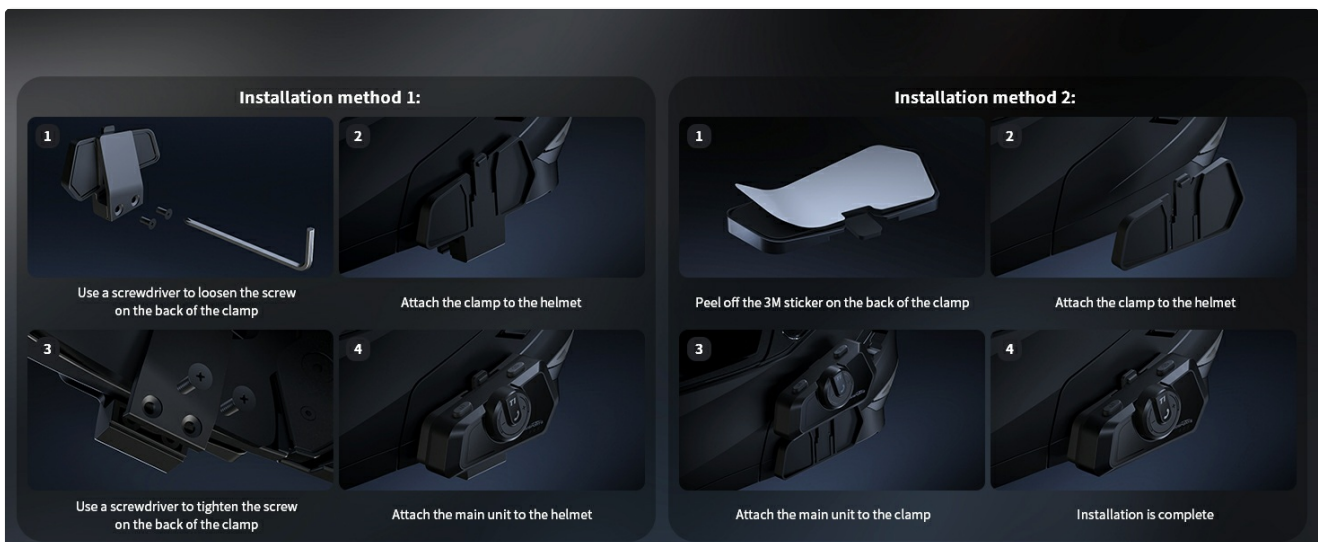


Image: Visual instructions for installing the Fodsports T1 intercom using both the screw clamp and adhesive methods on a helmet.

OPERATING INSTRUCTIONS

Power On/Off

To power on or off the device, press and hold the Power button and Mode button simultaneously for 3 seconds.

Mode Switching

The T1 motorcycle intercom features a convenient one-button toggle between three functional modes: Rider-to-Rider Intercom, Universal Pairing, and Music Sharing. Simply press the Mode button once to switch between these modes.

One-Click Mode Switching

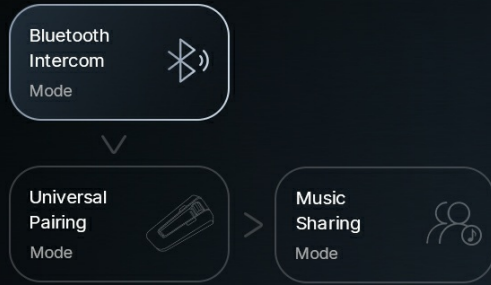


Image: Diagram illustrating the one-click mode switching feature of the Fodsports T1, showing transitions between Bluetooth Intercom, Universal Pairing, and Music Sharing modes.

2-Way Intercom

The T1 supports crystal-clear intercom communication for two riders within a range of up to 1000 meters.

1. Power on both T1 units and switch them to Bluetooth Intercom mode. (When powered on, the device defaults to Bluetooth Intercom mode).
2. Long press the Mode button on both units for 3 seconds to enter Pairing Mode. The green light will flash.
3. On one unit (e.g., Unit 1), click the Mode button once to enter Search Mode.
4. When the green light flashes slowly on both units, they have paired successfully.
5. To end or restore intercom, click the Power button.

2-Way Motorcycle Intercom

Intercom distance up to 1000m



Image: Two motorcyclists communicating via the Fodsports T1 intercom system, illustrating its 2-way communication capability over a distance of up to 1000 meters.

Your browser does not support the video tag.

Video: Demonstrates the process of setting up and using the 2-way intercom function between two Fodsports T1 units, including music sharing.

Music Sharing

Share music with your riding partner using the music sharing mode.

1. Power on both T1 units and switch them to Music Sharing mode.
2. Long press the Mode button on both units for 3 seconds to enter Pairing Mode.
3. On one unit (e.g., Unit 1), click the Mode button once to enter Search Mode.
4. When both units have paired successfully, connect Unit 1 to your mobile phone via Bluetooth and play music.
5. Click the Function button on Unit 1 to play music. The music will be shared with the paired Unit 2.
6. To exit or restore music sharing, click the Power button.

Music Sharing

Support music sharing between two riders



Image: Two motorcyclists riding together, with musical notes flowing between their helmets, symbolizing the music sharing feature of the Fodsports T1 intercom.

Phone Pairing and Calls

Pair your mobile phone to the T1 intercom for calls and music playback.

1. **Pairing Method 1 (Device Powered Off):** When the device is powered off, press and hold the Power button and Mode button for 5 seconds to enter pairing mode.
2. **Pairing Method 2 (Device Powered On):** When the device is powered on, press and hold the Power button and Function button for 3 seconds to enter pairing mode.
3. Turn on the Bluetooth function on your phone and pair with "FODSPORTS T1". The pairing is complete once connected.
4. **Answering Calls:** When a call comes in, press the Function button once to answer.
5. **Ending Calls:** After the call, press the Function button again to hang up.
6. **Rejecting Calls:** Long press the Function button for 3 seconds to reject an incoming call.
7. **Automatic Answering:** To switch between manual and automatic answering, press and hold the Power button and Function button for 3 seconds.

Noise Reduction

CVC&DSP noise reduction+ HD mic for clear calls



Image: A Fodsports T1 intercom unit shown next to a smartphone displaying its Bluetooth settings, indicating a successful connection to "FODSPORTS T1".

Music Playback Control

Control your music directly from the T1 intercom unit.

- **Play/Pause Music:** Click the Function button.
- **Volume Up:** Turn the knob right and keep holding it.
- **Volume Down:** Turn the knob left and keep holding it.
- **Play Next Track:** Turn the knob to the right once.
- **Play Previous Track:** Turn the knob to the left once.

Voice Command

Activate your phone's voice assistant for hands-free control.

- **Activate Voice Assistant:** Long press the Function button for 3 seconds.

FM Radio

Enjoy FM radio on your ride.

- **Radio ON:** Double-click the Function button.
- **Next Channel:** Turn the knob to the right once.
- **Previous Channel:** Turn the knob to the left once.
- **Radio OFF:** Double-click the Function button.

One-Click Mode Switching

Quickly switch between 3 modes

Two-Person Intercom, Universal Pairing, Music Sharing



Bluetooth Intercom Mode



Universal Pairing Mode



Music Sharing Mode

Image: A visual representation of the Fodsports T1's FM radio function, showing a frequency display and various station options.

Your browser does not support the video tag.

Video: An overview of the Fodsports T1's basic functions, including power on/off, phone pairing, music playback, voice commands, mobile phone calls, and FM radio operation.

MAINTENANCE

Charging

The T1 features a convenient USB-C charging port that supports simultaneous charging and operation. It takes approximately 2 hours to fully charge.

- **Charging Time:** 1.5-2 hours
- **Talk Time:** 20+ hours
- **Intercom Time:** 22 hours
- **Music Playback Time:** 25 hours
- **Standby Time:** 300+ hours

Endurance Time

Ultra-Long Battery Life for All-Day Performance



TYPE-C
2-hour fast charging



20+

Supports long
talk time

22

Supports long
Intercom time

25

Supports long
music playback

300+

Supports ultra-long
standby time

Image: The Fodsports T1 intercom unit connected via a USB-C cable for charging, with icons indicating its fast charging capability and extended battery life for talk, intercom, music, and standby times.

Water Resistance

The T1 intercom is designed with water-resistant features, making it suitable for various weather conditions.

TROUBLESHOOTING

If you encounter any issues with your Fodsports T1 intercom, please refer to the following common solutions:

- **Connectivity Issues:** Ensure both devices are in the correct pairing mode and within range. Try restarting both the intercom units and your mobile device.

- **Audio Quality:** Check microphone and speaker connections. Ensure the microphone is positioned correctly near your mouth. The device features triple noise-canceling technology (DSP/CVC/built-in mics) to reduce ambient noise.
- **Battery Life:** If battery life is shorter than expected, ensure the device is fully charged using the provided USB-C cable. Avoid extreme temperatures during charging and operation.
- **Unresponsive Buttons:** Try resetting the device by powering it off and on again.
- For further assistance, please contact Fodsports customer support.

SPECIFICATIONS

Brand	Fodsports
Model Name	T1
Bluetooth Version	5.4
Bluetooth Range	Up to 1000 meters (2-way intercom)
Noise Control	Hybrid Noise Cancellation (DSP/CVC/built-in mics)
Speakers	Hi-Fi Stereo Speakers (40mm)
Charging Port	USB-C
Water Resistance Level	Water Resistant
Control Method	Push Button / Rotary Knob
Functional Modes	Rider-to-Rider Intercom, Universal Pairing, Music Sharing
Additional Features	FM Radio, Microphone Mute, Voice Command

WARRANTY AND SUPPORT

The Fodsports T1 comes with a **1-Year Warranty** from the manufacturer.

For product support, warranty claims, or any inquiries, please visit the official Fodsports Store or contact their customer service directly.

Official Fodsports Store: [Visit the Fodsports Store](#)