

## FeiyuTech SCORP 3

# FeiyuTech SCORP 3 Gimbal Stabilizer Instruction Manual

Model: SCORP 3 | Brand: FeiyuTech

## INTRODUCTION

The FeiyuTech SCORP 3 is a professional-grade camera gimbal stabilizer designed to provide smooth and stable footage for various shooting scenarios. It features a built-in AI tracking module, a detachable remote control handle, and supports a maximum payload of 3.5KG, accommodating a wide range of cameras and lenses. This manual provides detailed instructions for setup, operation, maintenance, and troubleshooting to ensure optimal performance of your device.



Figure 1: FeiyuTech SCORP 3 Gimbal Stabilizer with camera and detachable remote.

## WHAT'S IN THE BOX

Verify that all components are present in the package:

- FeiyuTech SCORP 3 Main Body
- USB-C to Type-C Camera Control Cable
- USB-C Charging Cable
- Dust Cover
- Allen Key
- Tripod
- Fixed Plate
- Quick Release Plate
- Camera Fixed Screw
- Lens Holder

- Upper Quick Release Plate

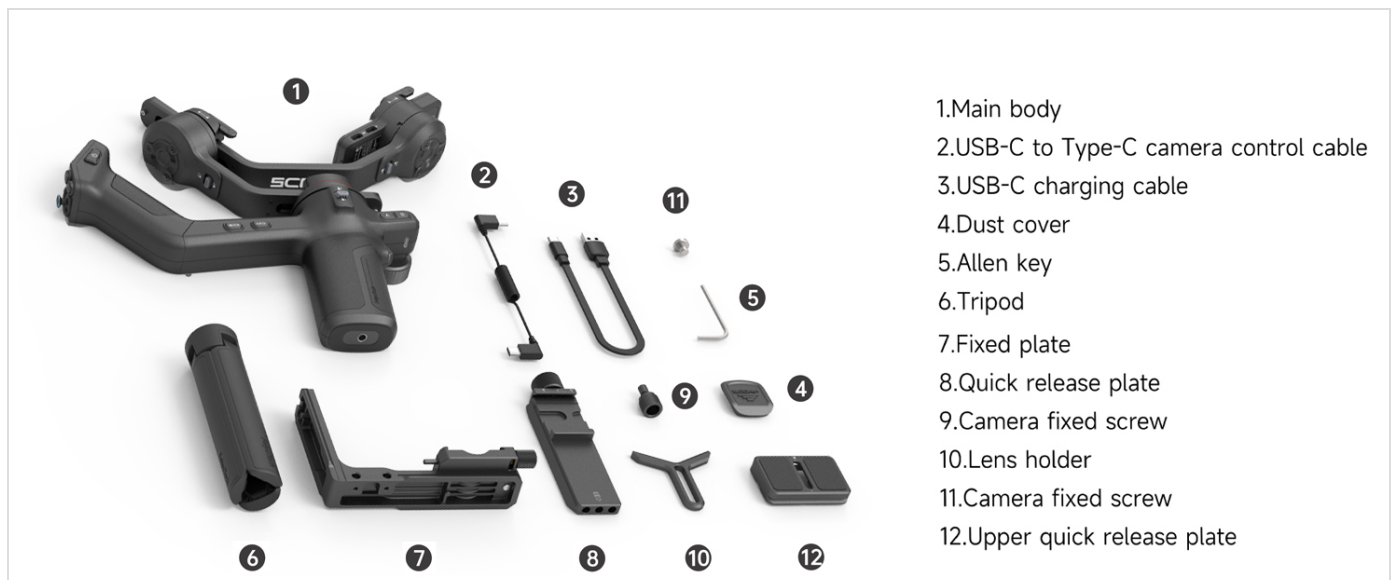


Figure 2: Package Contents of FeiyuTech SCORP 3.

## SETUP GUIDE

### 1. Powering On the Gimbal

Before powering on, ensure the gimbal is properly balanced and all motor locks for the tilt, roll, and pan axes are unlocked. Press and hold the power button on the side arm to turn on the gimbal. If the detachable handle is attached, you can also use its power button. If the handle is removed, the gimbal must be powered on via the main body. If using the handle separately, power it on independently.

Video 1: Instructions for powering on the FeiyuTech SCORP 3 Gimbal.

### 2. Attaching and Detaching the Remote Handle

To remove the handle, press and hold the handle's anti-drop lock. While holding the lock, slide the handle diagonally downward to detach it. To install, align the handle with the slot and slide it in until it clicks securely. Once detached, the handle can be used to remotely control the gimbal, including adjusting camera direction, starting/stopping recording, and changing shooting parameters.

Video 2: Guide for installing and removing the remote handle.

### 3. Vertical Camera Mounting

For vertical shooting, first ensure the camera is in horizontal mounting mode. Unlock the fixed plate lock. Push the anti-drop latch to release and remove the camera from the gimbal. Rotate the camera 90 degrees and slide it into the tilt axis slot vertically. Lock the latch again to secure the camera in the vertical position. This modular design allows for quick transitions to vertical shooting without additional tools.

Video 3: Tutorial for mounting the camera in vertical orientation.

# Fast Vertical Shooting, No Extra Tools

Thanks to a modular structure, the camera and mounting slider can be removed and rotated 90°, then quickly secured into the vertical arm. This allows for native vertical shooting with just one smooth motion—perfect for social media content.



Figure 3: Vertical shooting setup on SCORP 3.

## OPERATING INSTRUCTIONS

---

### 1. Basic Button Functions

The gimbal features several buttons and controls for various functions:

- **M Button:** Single-press to cycle through gimbal follow modes.
  - **Shutter Button:** Half-press to focus, single-press to start/stop recording. Long-press to take a photo.
  - **F1 Button:** Double-press to enter vertical shooting mode. Double-press again to exit.
  - **Trigger Button:** Hold to enter Lock Mode. Release to exit. Triple-press to enter Selfie Mode. Triple-press again to exit. Double-press to recenter the gimbal.
  - **Multi-function Dial:** Rotate to control the selected axis (pan, tilt, roll). Single-press the dial switch to toggle between different axes.
-

## 2. AI Tracking

The SCORP 3 features a built-in AI tracking module, eliminating the need for external accessories. Simply power on the gimbal to activate AI tracking. It supports gesture control for remote shooting and creative framing. Use hand gestures to snap photos or initiate tracking without touching the device. The AI module offers a 15% wider field of view and an 18m maximum tracking distance.



# AI TRACKING MADE EFFORTLESS

## Smarter Tracking with Built-in AI Module

Enhanced image recognition expands the FOV by 15%, improving both tracking speed and precision. Even in complex environments, it locks on targets fast-never miss a moment.



Supports gesture control for remote shooting and creative framing. Snap photos or start tracking with just a hand gesture-no touching required.



**Open Palm**  
Shoot / Record



**OK Gesture**  
Start / Stop Face  
Tracking



**Thumbs Opposite  
Direction**  
Start / Stop Tracking



**Double L-Shaped  
Gesture**  
Custom Framing



**Double Thumbs-up  
Gesture**  
Turn off gesture control

### 3. Bluetooth Control Guide

To connect your camera via Bluetooth:

1. On the gimbal's touchscreen, swipe left from the main menu to enter Bluetooth Settings.
2. Turn on Camera Control.
3. On your camera, go to Bluetooth Settings, enable Bluetooth, and enter Pairing Mode.
4. On the gimbal, select the camera you want to connect to from the list.
5. After pairing, return to your camera's settings and ensure Bluetooth Remote Control is turned on. Only then can the gimbal control the camera functions.

---

Video 5: Step-by-step guide for Bluetooth camera control.

### 4. How to Use the Follow Focus System

To use the follow focus system:

1. Install the follow focus support bracket by mounting it to the lens support thread hole on the slider and tightening the screw.
2. Wrap the smooth side of the focus gear belt tightly around the focus ring of your lens. Lock the gear belt firmly in place.
3. Install the follow focus support rod and tighten its quick-release screw.
4. Attach the other quick-release screw to the follow focus unit. Slide the unit onto the support rod, ensuring the gear on the follow focus is tightly meshed with the gear belt.
5. Plug one end of the control cable into the MF port on the gimbal and the other into the follow focus port.
6. On the gimbal's main touchscreen, swipe up from the bottom and select "Follow Focus".
7. Double-press the M button on the follow focus unit to start manual calibration. Rotate the lens knob from near focus (or far focus) to the opposite end. Then single-press the M button again to complete calibration.
8. You can now freely control focus using the follow focus knob. Long-press A to save the current focus point as Point A. Adjust to a new focus position, then long-press B to save it as Point B. Tap A to automatically return to Point A, or tap B to go to Point B.

---

Video 6: Detailed guide on setting up and using the follow focus system.

## MAINTENANCE

---

Proper maintenance ensures the longevity and optimal performance of your FeiyuTech SCORP 3 Gimbal Stabilizer:

- **Cleaning:** Use a soft, dry cloth to clean the gimbal body. For stubborn dirt, a slightly damp cloth can be used, followed by immediate drying. Avoid harsh chemicals or abrasive materials.
- **Storage:** Store the gimbal in a dry, dust-free environment, preferably in its original case or a protective bag. Ensure all axes are locked before storage to prevent accidental movement and potential damage.
- **Battery Care:** Charge the batteries regularly, even if not in use, to maintain battery health. Avoid fully discharging the batteries for extended periods. Store batteries at approximately 50-60% charge if storing for a long time.
- **Firmware Updates:** Regularly check the official FeiyuTech website for firmware updates. Keeping your gimbal's firmware up-to-date ensures access to new features, performance improvements, and bug fixes.

## TROUBLESHOOTING

---

If you encounter issues with your FeiyuTech SCORP 3, refer to the following common solutions:

- **Gimbal Motors Not Functioning/Erratic Movement:**

Ensure the camera is correctly balanced on all three axes (tilt, roll, pan) before powering on the gimbal. Improper balancing can cause motors to overwork or behave erratically. Perform an auto-tune calibration via the gimbal's touchscreen. Check for any obstructions preventing free movement of the gimbal axes.

• **Camera Not Responding to Controls:**

Verify that the camera is properly connected via Bluetooth (refer to the Bluetooth Control Guide). Ensure the camera's Bluetooth Remote Control setting is enabled. Check the camera control cable connection if using a wired connection.

• **AI Tracking Issues:**

Ensure the AI tracking module is clean and unobstructed. Confirm that the AI tracking feature is activated. Try recalibrating the AI tracking if performance is inconsistent.

• **Short Battery Life:**

Ensure the gimbal is fully charged before use. Check for any background processes or excessive motor strain (due to unbalanced setup) that might be draining the battery faster.

If problems persist, consult the official FeiyuTech support resources or contact customer service.

SPECIFICATIONS

Feature	Specification
Product Dimensions	11.77 x 9.92 x 2.6 inches (299.1 x 66 x 252.7mm folded)
Item Weight	3.02 pounds (1368 Grams)
Max Payload	3.5 KG
Batteries	2 AA batteries required (included)
Stabilization Algorithm	2025 Quaternion Stabilization Algorithm (10th-Gen Anti-shake 10.0)
AI Tracking	Built-in, 15% Wider FOV, 18m Max Tracking Distance, Gesture Control
Handle	Detachable Teapot Handle, Wireless Remote Control
Vertical Shooting	Fast, Tool-free Vertical Switch

CAMERA COMPATIBILITY

The FeiyuTech SCORP 3 is compatible with a wide range of cameras and lenses. Please refer to the images below for detailed compatibility lists for Sony, Canon, Nikon, Sigma, BMPCC, Panasonic, and Fujifilm cameras.

Sony Camera Compatibility

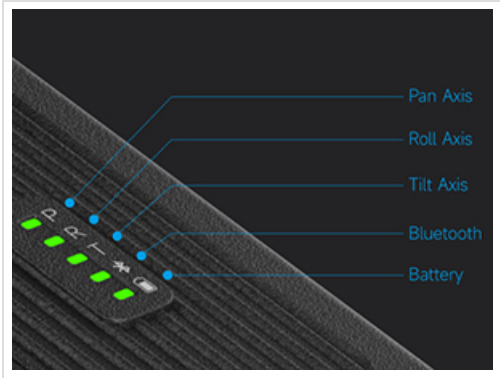


Figure 5: Sony Camera and Lens Compatibility.



## Canon Camera Compatibility



Figure 6: Canon Camera and Lens Compatibility.

## Nikon, Sigma, BMPCC Camera Compatibility



Figure 7: Nikon, Sigma, and BMPCC Camera and Lens Compatibility.

## Panasonic, Fujifilm Camera Compatibility



Figure 8: Panasonic and Fujifilm Camera and Lens Compatibility.






**Compatibility Reminder:** Always check before mounting to ensure optimal performance. Some camera brands restrict third-party access to control features due to closed-source protocols, which may limit certain advanced controls on specific models. FeiyuTech is committed to expanding support and unlocking more functions with ongoing firmware and compatibility updates.

## WARRANTY AND SUPPORT

---

FeiyuTech products typically come with a standard manufacturer's warranty. Please refer to the warranty card included in your product packaging or visit the official FeiyuTech website for detailed warranty terms and conditions. For technical support, troubleshooting assistance, or service inquiries, please contact FeiyuTech customer support through their official channels.

Related Documents - SCORP 3

	<p><a href="#">FeiyuTech SCORP Mini 3 Pro User Manual</a></p> <p>Comprehensive user manual for the FeiyuTech SCORP Mini 3 Pro handheld gimbal, covering setup, operation, features, and specifications for camera and smartphone stabilization.</p>
	<p><a href="#">FeiyuTech SCORP Mini 3 Gimbal User Manual</a></p> <p>Comprehensive instructions for the FeiyuTech SCORP Mini 3 gimbal, covering setup, mounting, balancing, operation, and specifications for cameras and smartphones.</p>
	<p><a href="#">Feiyu SCORP Mini 3 Pro Gimbal Instructions</a></p> <p>Comprehensive instructions for the Feiyu SCORP Mini 3 Pro handheld gimbal, covering setup, mounting, balancing, operation, and specifications for camera and smartphone use.</p>
	<p><a href="#">FeiyuTech SCORP-C Gimbal Stabilizer User Manual</a></p> <p>Comprehensive user manual for the FeiyuTech SCORP-C 3-axis handheld gimbal stabilizer, covering setup, balancing, operation, app connectivity, and specifications for DSLR and mirrorless cameras.</p>
	<p><a href="#">Feiyu SCORP Mini 3 Smartphone Version Instructions</a></p> <p>This document provides instructions for the Feiyu SCORP Mini 3 Smartphone Version gimbal, covering setup, operation, and specifications.</p>



### [FeiyuTech VB4 3-Axis Handheld Gimbal for Smartphone: User Manual](#)

Comprehensive user manual for the FeiyuTech VB4 3-Axis Handheld Gimbal for Smartphones. Covers setup, operation, modes, connection, indicators, specifications, and maintenance for this compact smartphone stabilizer.