



Manuals.plus /

› Hasskya /

› Hasskya K30 10-Inch Android 15 Tablet User Manual

## Hasskya K30

# Hasskya K30 10-Inch Android 15 Tablet User Manual

Model: K30 | Brand: Hasskya

## 1. INTRODUCTION

---

This manual provides essential information for the proper use and maintenance of your Hasskya K30 10-inch Android 15 Tablet. Please read these instructions carefully before using your device to ensure optimal performance and longevity.

## 2. SETUP

---

### 2.1 Package Contents

Verify that all items are present in the package:

- Hasskya K30 Tablet
- Protective Case
- Charging Cable
- Power Adapter



Image: Hasskya K30 Tablet with its included accessories, including a protective case, charging cable, and power adapter.

## 2.2 Charging the Tablet

Before first use, fully charge the tablet. Connect the charging cable to the tablet's Type-C port and the power adapter, then plug the adapter into a wall outlet. The 6000mAh battery provides extended usage time.

## 2.3 Powering On/Off

- **To Power On:** Press and hold the Power button until the screen illuminates.
- **To Power Off:** Press and hold the Power button, then select 'Power off' from the options on the screen.
- **To Restart:** Press and hold the Power button, then select 'Restart' from the options on the screen.

## 2.4 Initial Configuration

Upon first startup, follow the on-screen prompts to:

- Select your preferred language.
- Connect to a Wi-Fi network. The tablet supports Wi-Fi 5 (2.4G/5G dual-band) for stable internet access.
- Set up your Google account.
- Configure security settings, including screen lock and face recognition.

## 3. OPERATING YOUR TABLET

### 3.1 Touchscreen Navigation

The 10.1-inch IPS HD display responds to touch gestures:

- **Tap:** Select an item or open an application.
- **Swipe:** Navigate through screens or scroll content.
- **Pinch:** Zoom in or out on images and web pages.
- **Long Press:** Access contextual menus or move icons.



Image: The Hasskya K30 Tablet showcasing its 10.1-inch IPS HD display with a resolution of 1280x800 pixels.

### 3.2 Face Recognition Unlock

The tablet features face recognition for quick and secure unlocking. To set up:

1. Go to **Settings > Security > Face Unlock**.
2. Follow the on-screen instructions to register your facial data.
3. Once registered, simply face the front camera to unlock the device.



Image: A user demonstrating the face unlock feature on the Hasskya K30 tablet.

### 3.3 Split Screen Functionality

Multitask efficiently using the split-screen feature:

1. Open an application.
2. Swipe up from the bottom of the screen and hold to access recent apps.
3. Tap the app icon at the top of an app's preview and select 'Split screen'.
4. Choose a second app from the recent apps list or app drawer to use alongside the first.



Image: The Hasskya K30 tablet demonstrating its split-screen capability, allowing two applications to be viewed and used concurrently.

### 3.4 Connectivity

- **Wi-Fi:** Connect to 2.4G or 5G Wi-Fi networks via **Settings > Network & internet > Wi-Fi**.
- **Bluetooth:** Pair with Bluetooth 5.2 devices (headphones, speakers) via **Settings > Connected devices > Bluetooth**.

### 3.5 Cameras

The tablet is equipped with a 5MP front camera and an 8MP rear camera. Open the Camera app to capture photos and videos or engage in video calls.



## Sharp Shots, Sharper Focus



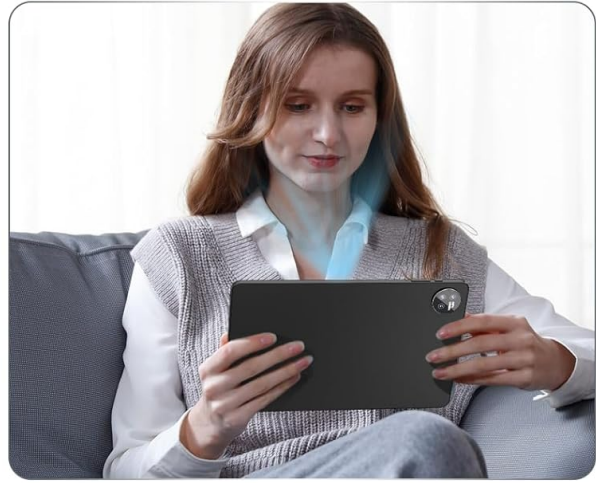
8 MP Main Camera  
Autofocus



LED Flash Low Light  
Capture



5MP Front camera HD  
Video Calls



## Global Reach, Precise Navigation



GPS  
Google offline Maps



Image: Details of the Hasskya K30 tablet's 8MP main camera with LED flash and 5MP front camera, illustrating its use for photography and video calls.

### 3.6 GPS Navigation

The tablet integrates quad-constellation GNSS (Beidou, QZSS, GLONASS, and Galileo) for accurate location services. Use navigation applications for precise guidance.

### 3.7 Widevine L1 Support

With Widevine L1 certification, the tablet supports high-definition video streaming from platforms such as Netflix and Amazon Prime Video, ensuring a clear and immersive viewing experience.

## Dual Front 5MP and Rear 8MP Cameras

Capture the moment and illuminate your beauty. Satisfy video chatting needs, take great photos and record clear videos.



## Recording More Moments

Image: The Hasskya K30 tablet highlighting its Widevine L1 support for high-definition streaming from popular video platforms.

## 4. MAINTENANCE AND CARE

### 4.1 Cleaning the Screen

Use a soft, lint-free cloth, slightly dampened with water or a screen cleaner, to gently wipe the display. Avoid harsh chemicals or abrasive materials.

### 4.2 Battery Longevity Tips

- Avoid extreme temperatures.
- Do not leave the tablet fully charged or fully discharged for extended periods.
- Adjust screen brightness to a comfortable level to conserve power.
- Close unused applications running in the background.

### 4.3 Software Updates

Regularly check for and install system updates via **Settings > System > System update** to ensure your tablet has the latest features and security enhancements.

## 5. TROUBLESHOOTING

This section addresses common issues you might encounter.

### 5.1 Tablet Will Not Turn On

- Ensure the tablet is charged. Connect it to the charger for at least 30 minutes.
- Press and hold the Power button for 10-15 seconds to force a restart.

### 5.2 Wi-Fi Connection Issues

- Verify that Wi-Fi is enabled in **Settings > Network & internet > Wi-Fi**.
- Restart your Wi-Fi router.
- Forget the network and reconnect by re-entering the password.

### 5.3 Apps Crashing or Freezing

- Close and reopen the app.
- Clear the app's cache and data via **Settings > Apps > [App Name] > Storage & cache**.

- Ensure the app is updated to its latest version.
- Restart the tablet.

#### 5.4 Slow Performance

- Close unnecessary background applications.
- Clear cached data from apps and the system.
- Ensure sufficient storage space is available.

### 6. SPECIFICATIONS

Key technical specifications of the Hasskya K30 Tablet:

## T310-High Performance Processor

Adopting eight-core heterogeneous design, faster response, smoother use, more accurate colour reproduction, high detail clarity.



## Android 15

Enhanced performance, refined design, and stronger security

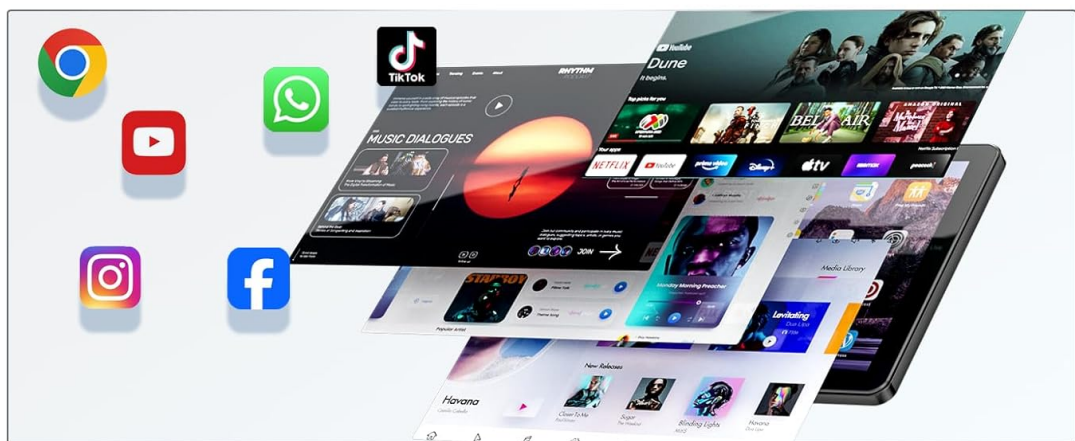


Image: The T310 Octa-Core processor, which powers the Hasskya K30 tablet, ensuring efficient performance.

Feature	Specification
Model Name	K30
Operating System	Android 15
Processor	Unisoc T310 Octa-Core
RAM	18GB (6GB physical + 12GB virtual)
Internal Storage	128GB
Expandable Storage	Up to 1TB via Micro SD card (not included)
Screen Size	10.1 Inches
Screen Resolution	1280 x 800 pixels (IPS HD)
Front Camera	5MP
Rear Camera	8MP
Battery Capacity	6000mAh
Wireless Connectivity	Wi-Fi 5 (802.11ac, 2.4G/5G dual-band)
Bluetooth	Bluetooth 5.2
Navigation	Quad-constellation GNSS (Beidou, QZSS, GLONASS, Galileo)
Dimensions (LxWxH)	9.68 x 6.41 x 0.39 inches
Item Weight	2.55 pounds

## 7. WARRANTY AND SUPPORT

---

### 7.1 Warranty Information

Your Hasskya K30 Tablet is covered by a manufacturer's warranty. Please refer to the warranty card included in your package for specific terms and conditions. Keep your proof of purchase for warranty claims.

### 7.2 Customer Support

If you encounter any issues or have questions regarding your product, please contact Hasskya customer support. Most inquiries are answered within 24 hours.

**How to contact us:**

- Locate your order on the platform where you purchased the tablet.
- Click on 'Get Product Support' to initiate contact.