

GEARit 3-Channel

GEARit 3-Channel 4K Dash Cam User Manual

Model: 3-Channel

1. INTRODUCTION

Thank you for choosing the GEARit 3-Channel 4K Dash Cam. This device is designed to provide comprehensive video surveillance for your vehicle, recording simultaneously from the front, interior, and rear perspectives. It features 4K resolution for the front camera, enhanced night vision, built-in GPS and Wi-Fi, and intelligent parking monitoring. Please read this manual carefully to ensure proper installation, operation, and maintenance of your dash cam.



Image 1.1: The GEARit 3-Channel 4K Dash Cam system, including the main unit, interior camera, rear camera, and a smartphone interface.

2. PACKAGE CONTENTS

Verify that all items listed below are present in your package:

- 3-Channel Dash Cam (Main Unit)
- Rear Camera
- Type-C USB Power Cable
- Car Charger (12V adapter)
- Cable Clips (for neat cable routing)
- Pry Tool (for cable installation)
- Electrostatic Films (for windshield mounting)
- 64GB Storage Card (pre-installed or separate)
- Instruction Manual

Everything You Need



Image 2.1: All components included in the GEARit 3-Channel Dash Cam package.

3. PRODUCT OVERVIEW

The GEARit 3-Channel Dash Cam is equipped with advanced features for comprehensive vehicle surveillance:

- **Front Camera:** Records in 4K Ultra HD resolution, capturing clear details of the road ahead.
- **Interior Camera:** Records the cabin environment, useful for ride-share drivers or monitoring passenger activity.
- **Rear Camera:** Records the view behind your vehicle, typically in 1080P Full HD.
- **Night Vision:** Superior low-light sensor technology ensures clear video quality in dark conditions.
- **Built-in GPS:** Records driving route, speed, and location data.
- **Wi-Fi Connectivity:** Allows wireless connection to a smartphone app for video review and settings adjustment.
- **Parking Mode:** Provides 24/7 surveillance when the vehicle is parked, detecting motion and impacts (requires optional hardwire kit).
- **Voice Control:** Hands-free operation for common functions.
- **Loop Recording:** Automatically overwrites the oldest footage when the memory card is full.

- **G-Sensor:** Detects sudden impacts or collisions and automatically locks the current video file to prevent overwriting.
- **Super Capacitor:** Provides reliable power in extreme temperatures and offers a longer lifespan compared to traditional batteries.

3 Channel Dash Cam with HDR & WDR recording



Image 3.1: Illustration of the 3-channel recording capability (Front, Cabin, Rear).

4. SETUP AND INSTALLATION

Follow these steps for proper installation of your dash cam:

1. **Prepare the Windshield:** Clean the area on your windshield where the main dash cam unit will be mounted. Apply an electrostatic film to the chosen area to protect your windshield and allow for easier repositioning if needed.
2. **Mount the Main Unit:** Attach the main dash cam unit to the electrostatic film using the adhesive mount. Position it discreetly behind your rearview mirror to avoid obstructing your view. Ensure the front camera has a clear line of sight to the road.
3. **Install the Rear Camera:** Connect the rear camera to the main unit using the provided cable. Route the cable neatly along the headliner and A-pillar, down to the rear of the vehicle. Use the pry tool to tuck the

cable under trim panels and the included cable clips to secure it. Mount the rear camera on the rear windshield, ensuring a clear view.

4. **Power Connection:** Insert the 64GB storage card into the designated slot on the main unit. Connect the Type-C USB power cable to the dash cam and plug the car charger into your vehicle's 12V power outlet. Route the power cable neatly to avoid interference with driving controls.
5. **Initial Power On:** Once connected to power, the dash cam should automatically power on and begin recording when your vehicle starts. Adjust the camera angles as needed to ensure optimal coverage for all three channels.
6. **App Connection (Optional but Recommended):** Download the GEARit companion app from your smartphone's app store. Enable Wi-Fi on the dash cam (via settings or voice command) and connect your phone to the dash cam's Wi-Fi network. This allows for live view, video playback, and settings management.

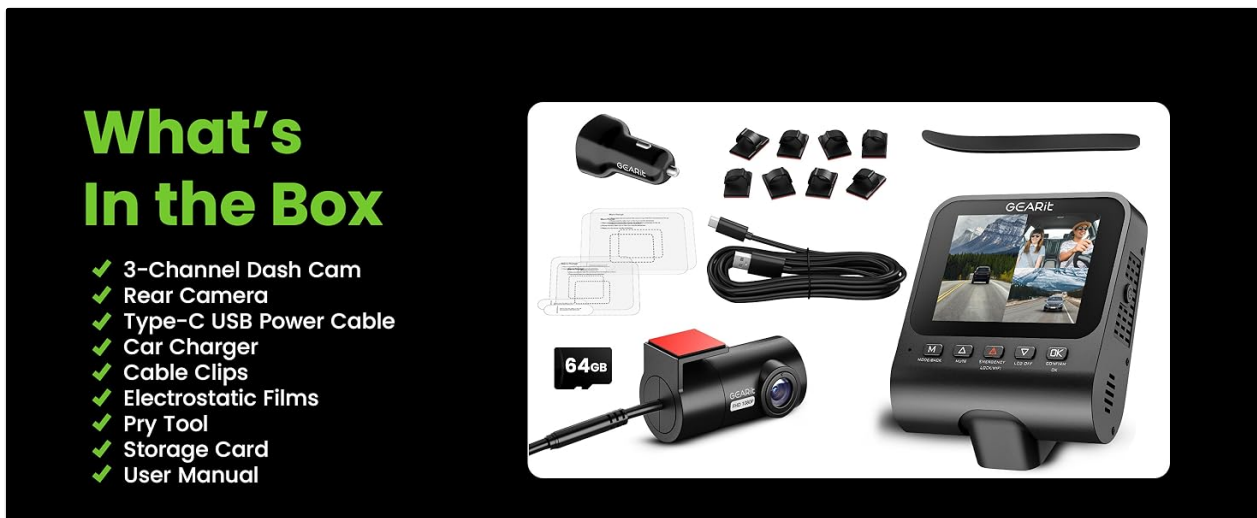


Image 4.1: Visual guide for quick installation and cable routing.

5. OPERATING INSTRUCTIONS

5.1 Basic Operation

- **Power On/Off:** The dash cam automatically powers on and off with your vehicle's ignition.
- **Recording:** Continuous loop recording starts automatically when the device is powered on.
- **Display Modes:** Cycle through different camera views (Front, Interior, Rear, Picture-in-Picture combinations) using the 'M' (Mode) button.

5.2 Advanced Features

5.2.1 Loop Recording

The dash cam records video in segments (e.g., 1, 3, or 5 minutes) and stores them on the SD card. When the card is full, the oldest unprotected files are automatically overwritten. This ensures continuous recording without manual intervention.

Endless Loop Recording

Overwrites older videos when the SD card is full.



Image 5.1: Visual representation of the loop recording function.

5.2.2 Emergency Lock Function (G-Sensor)

The built-in G-Sensor detects sudden impacts or rapid acceleration/deceleration. When triggered, it automatically locks the current video segment, preventing it from being overwritten by loop recording. These files are stored in a separate 'Event' folder on the SD card.

Emergency Lock Function

Prevents important videos from being overwritten during emergencies.

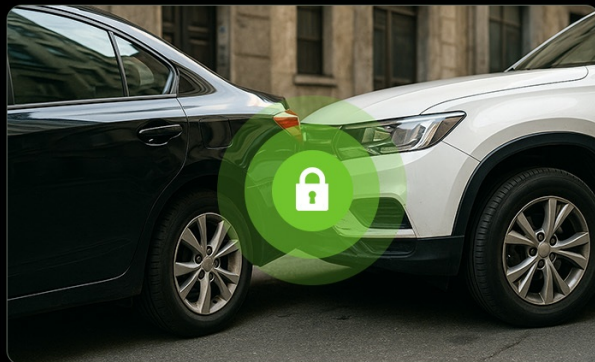


Image 5.2: The Emergency Lock Function secures critical footage during incidents.

5.2.3 Parking Mode

With an optional hardwire kit (sold separately), the dash cam can monitor your vehicle 24/7 while parked. It utilizes:

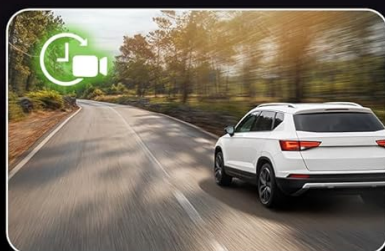
- **Motion Detection:** Records when movement is detected around the vehicle.
- **G-Sensor:** Records when an impact is detected while parked.
- **Time-Lapse Recording:** Continuously records at a low frame rate to save storage space.

Smart Parking Mode

24H Monitoring



Time Lapse



G-Sensor



Motion Detection



Optional Type-C 3-lead hardwire kit is needed for 24 hour function (not included).

Image 5.3: Smart Parking Mode features for 24-hour vehicle monitoring.

5.2.4 Night Vision

The dash cam automatically enhances video clarity in low-light conditions, ensuring important details like license plates are visible even at night.



Image 5.4: Super Night Vision captures details in the dark.

5.2.5 Voice Control

Operate key functions hands-free using simple voice commands. Examples include:

- "Turn on Audio" / "Turn off Audio"
- "Lock the Video"
- "Take Picture"
- "Turn on WiFi" / "Turn off WiFi"



Image 5.5: Hands-Free Voice Control for safer driving.

5.2.6 Wi-Fi and GPS

Connect your smartphone to the dash cam via Wi-Fi to access the companion app. The app allows you to:

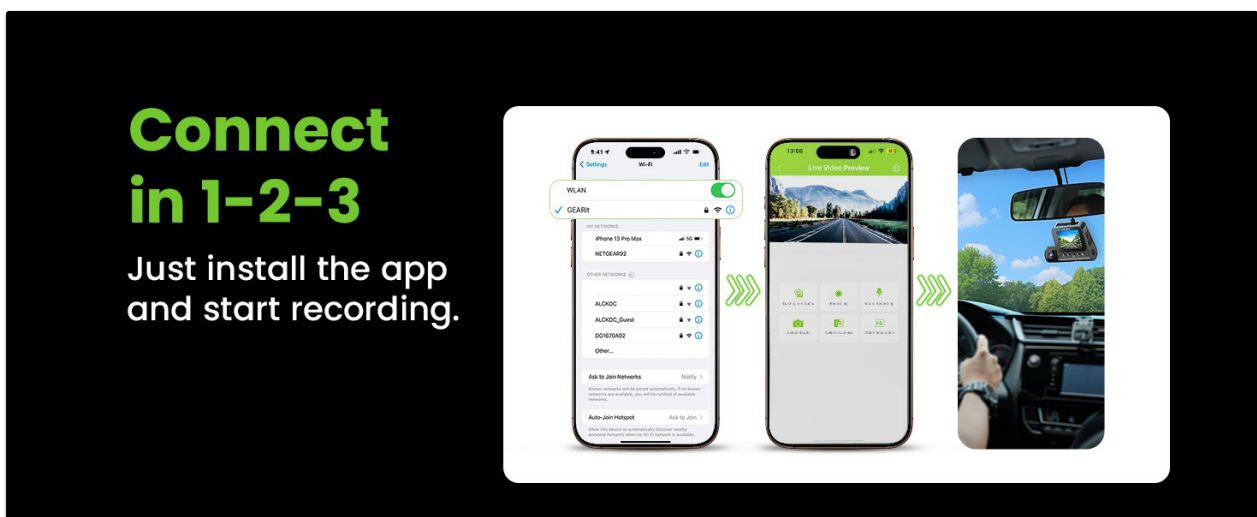
- View live footage from all cameras.
- Playback recorded videos.
- Download videos to your phone.
- Adjust dash cam settings.
- View GPS data (route, speed) integrated with video playback.



Image 5.6: Built-in GPS and Wi-Fi for smart tracking and faster sharing.

5.2.7 File Transfer

You can transfer recorded videos and images to your PC or laptop by either connecting the dash cam directly via USB or by removing the SD card and using a card reader.



6. MAINTENANCE

- **Cleaning:** Regularly clean the camera lenses and the dash cam screen with a soft, dry cloth. Avoid using abrasive cleaners.
- **SD Card Formatting:** It is recommended to format the SD card every 2-4 weeks to maintain optimal performance and prevent data corruption. This can usually be done through the dash cam's settings menu or via the companion app.
- **Firmware Updates:** Check the GEARit website or app periodically for firmware updates. Keeping your dash cam's firmware up-to-date ensures the best performance and access to new features.

7. TROUBLESHOOTING

If you encounter issues with your GEARit 3-Channel Dash Cam, refer to the following common problems and solutions:

Problem	Possible Cause	Solution
Dash cam does not power on.	No power supply; faulty car charger or cable.	Check car charger connection and vehicle's 12V outlet. Try a different USB cable or car charger.
Dash cam stops recording or freezes.	SD card error; full SD card; faulty SD card.	Format the SD card. Replace with a new, high-quality SD card if issues persist. Ensure the card is Class 10 or higher.
Poor video quality.	Dirty lens; protective film still on lens; incorrect resolution settings.	Clean the camera lenses. Remove any protective films. Check video resolution settings in the menu.
Wi-Fi connection issues.	Wi-Fi not enabled; incorrect password; app issues.	Ensure Wi-Fi is enabled on the dash cam. Verify the correct Wi-Fi password. Restart the dash cam and your smartphone. Reinstall the app if necessary.
Parking mode not working.	Hardwire kit not installed; incorrect settings.	Ensure the optional hardwire kit is correctly installed. Check parking mode settings in the dash cam menu.

8. SPECIFICATIONS

Feature	Detail
Model Name	3-Channel
Video Capture Resolution	2160p (4K Front)

Feature	Detail
Connectivity Technology	Wi-Fi
Special Features	Parking Monitor, Night Vision, G-Sensor, Loop Recording, Voice Control
Mounting Type	Windshield Mount, Rearview Mirror Mount
Field Of View	170 Degrees
Item Weight	1.5 pounds
Color	Black
Included Components	Adhesive Mount, Cable Clips, Instruction Manual, Rear Camera, Type-C USB Power Cable, Car Charger, Pry Tool, Electrostatic Films, 64GB Storage Card

9. WARRANTY AND SUPPORT

The GEARit 3-Channel 4K Dash Cam comes with a **24-month warranty** from the date of purchase. This warranty covers manufacturing defects and ensures reliable performance of your device. For technical support, warranty claims, or any questions regarding your product, please visit the official GEARit store or contact customer service through the details provided on the GEARit website.

[Visit the Official GEARit Store for Support](#)