

Watts Intelliflow

Watts IntelliFlow A2C-SC-WB Series Smart Water Shutoff Valve User Manual

Model: Intelliflow | Brand: Watts

1. PRODUCT OVERVIEW

The Watts IntelliFlow A2C-SC-WB Series Smart Water Shutoff Valve is designed to protect your home from potential water damage caused by washing machine leaks. This intelligent system monitors your washing machine's water flow and automatically shuts off the water supply upon detecting a leak, preventing catastrophic flooding.



Figure 1: Watts IntelliFlow A2C-SC-WB Smart Water Shutoff Valve with Wall Box and Leak Sensor.

Key Features:

- **Smart Water Shutoff:** Senses washing machine current flow and immediately shuts off water if an inlet hose bursts.
- **Real-Time Alerts:** Connects to Wi-Fi to send text and email alerts upon leak detection.
- **Continuous Monitoring:** Monitors water flow and presence of water behind the washing machine.
- **Advanced Electronic Control:** Allows water flow only when the washing machine is in use and automatically closes valves upon leak detection.
- **Included Components:** Valve, wall box, electrical three-prong outlet, leak sensor, power cord, and replaceable internal strainer screen.

Your browser does not support the video tag.

Video 1: An overview of the Watts IntelliFlow A2C-SC-WB Smart Water Shutoff Valve, highlighting its primary functions and benefits.

Your browser does not support the video tag.

Video 2: Features and benefits of the Watts IntelliFlow Washing Machine Shutoff, detailing how it protects against water damage.

2. SAFETY INFORMATION

Please read and understand all instructions and safety warnings before installing or operating the Watts IntelliFlow Smart Water Shutoff Valve. Failure to follow these instructions may result in property damage, personal injury, or death.

General Safety Precautions:

- Always shut off electrical power and water supply to the washing machine area before beginning any installation or maintenance.
- Consult local codes and a qualified professional before beginning any plumbing or electrical work.
- Ensure proper grounding for all electrical connections.
- Do not overtighten connections to prevent damage to the unit or hoses.
- The IntelliFlow is designed for vertical installation only.

3. WHAT'S IN THE BOX

Upon opening your Watts IntelliFlow A2C-SC-WB package, verify that all components are present and undamaged:

- Watts IntelliFlow Smart Water Shutoff Valve Unit
- Wall Box
- Leak Sensor with Cable
- Power Cord
- Inlet Adapters (for hot and cold water supply)
- Replaceable Internal Strainer Screen (pre-installed or separate)



Figure 2: Contents of the Watts IntelliFlow A2C-SC-WB package.

4. SETUP AND INSTALLATION

This section provides step-by-step instructions for installing your Watts IntelliFlow Smart Water Shutoff Valve. For a visual guide, please refer to Video 3.

Before You Begin:

1. Shut off the electrical power supply to the outlet that will be used for the IntelliFlow.

2. Shut off the hot and cold water supply lines to your washing machine.
3. If retrofitting, disconnect the washing machine hoses from the existing shutoff valves.

Installation Steps:

1. **Prepare Adapters:** Loosen the two adapter nuts and remove both adapters from the IntelliFlow valve body.
2. **Install Adapters:** Place the adapter nuts over the piping. Solder the adapters onto the piping.
3. **Mount Valve Body:** Place the O-rings on the adapter grooves. Align and slip the valve body over the adapters.
4. **Secure Valve Body:** Tighten the adapter nuts, ensuring not to overtighten.
5. **Connect Washing Machine Hoses:** Connect the washing machine hoses to the IntelliFlow's hot and cold water outlets.
6. **Plug in Washing Machine:** Plug the washing machine into the IntelliFlow's electrical outlet.
7. **Connect Leak Sensor:** Plug the floor leak sensor into the designated port on the IntelliFlow unit.
8. **Plug in IntelliFlow:** Plug the IntelliFlow's power cord into the electrical outlet that was previously turned off. The IntelliFlow requires a 120V, 60Hz, 15A ground fault protected outlet.
9. **Restore Power and Water:** Turn on both hot and cold water supply lines and restore electrical power. Check for any leaks.
10. **Register and Connect to Wi-Fi:** Scan the QR code on your IntelliFlow, register it online, and connect it to your local Wi-Fi network to enable real-time text and email alerts.

IntelliFlow Washing Machine Smart Water Shutoff



Opens and closes water valve to washing machine



Automatically closes water valve when leak is detected



Sends real-time alerts when a leak is detected

Figure 3: Watts IntelliFlow unit installed within its wall box.



Figure 4: Front view of the IntelliFlow unit, showing electrical outlet and water connections.

Your browser does not support the video tag.

Video 3: Detailed installation guide for the Watts IntelliFlow Washing Machine Shutoff, covering plumbing and electrical connections.

5. OPERATING INSTRUCTIONS

The Watts IntelliFlow operates automatically to provide continuous protection against washing machine leaks.

Normal Operation:

- The IntelliFlow senses when your washing machine is in use by detecting electrical current.
- When the washing machine is active, the IntelliFlow valves open to allow water flow.
- Once the washing machine cycle is complete and no current is detected, the valves will automatically close after a set period (e.g., 15 minutes, depending on the model version).

Leak Detection and Shutoff:

- The floor-mounted leak sensor continuously monitors for the presence of water.
- If water is detected by the sensor, the IntelliFlow immediately shuts off the water supply to the washing machine.
- A leak indicator light on the unit will illuminate (e.g., red) and, if connected to Wi-Fi, you will receive real-time text and email alerts.

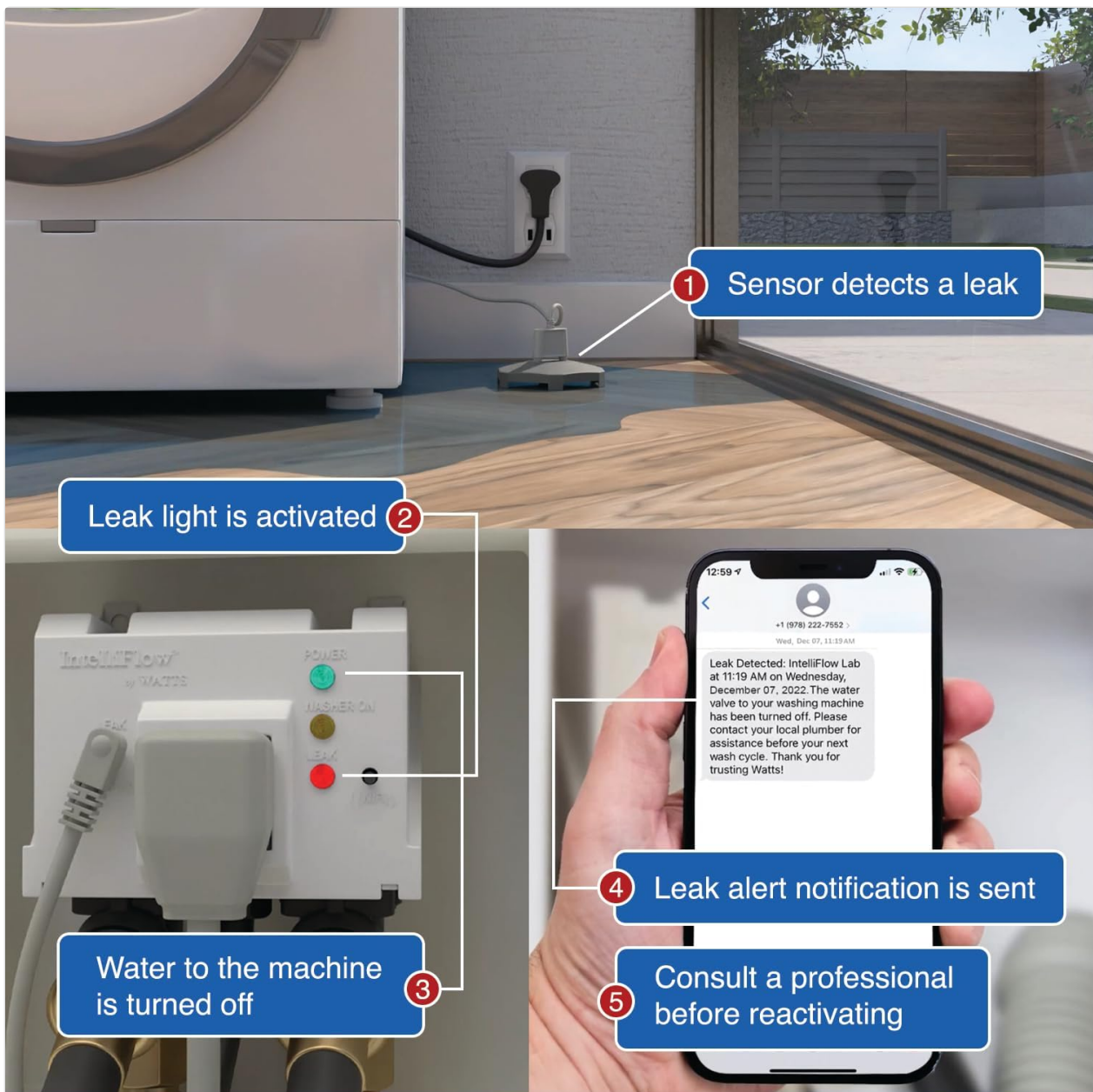


Figure 5: The IntelliFlow's leak detection and alert process.



Immediate Water Shutoff

A burst washing machine hose can discharge 500 gallons of water in one hour. Protect your home with Intelliflow. Automatic water shutoff and real-time alerts to help prevent water damage.

Figure 6: Visual representation of immediate water shutoff upon leak detection.

6. MAINTENANCE

Regular maintenance helps ensure the longevity and optimal performance of your Watts IntelliFlow Smart Water Shutoff Valve.

Routine Checks:

- **Visual Inspection:** Periodically inspect the unit, hoses, and leak sensor for any signs of wear, damage, or leaks.
- **Leak Sensor Placement:** Ensure the floor-mounted leak sensor remains in its intended position behind the washing machine, free from obstructions.
- **Strainer Screen:** The unit includes a replaceable internal strainer screen. Check and clean this screen periodically to prevent debris buildup that could affect water flow. Refer to the full user manual for instructions on accessing and cleaning the strainer.
- **Functionality Test:** Occasionally test the leak detection by placing a small amount of water near the sensor to ensure it triggers the shutoff mechanism and alerts.

7. TROUBLESHOOTING

If you encounter issues with your Watts IntelliFlow, refer to the following common troubleshooting steps. For more complex problems, consult the full user manual or contact Watts customer support.

Common Issues and Solutions:

- **Valve Not Opening/Closing Properly or Low Flow:**
 - Ensure the unit is receiving adequate power.
 - Check for any obstructions in the water lines or within the unit's strainer screen.
 - Verify that the washing machine is properly plugged into the IntelliFlow's outlet and drawing current during operation.
 - If the valve is stuck or providing low flow, it may indicate an internal mechanical issue.
- **No Wi-Fi Connection or Alerts:**
 - Ensure your Wi-Fi network is active and the IntelliFlow is within range.
 - Verify that the IntelliFlow is correctly registered online and connected to your Wi-Fi network as per the setup instructions.
 - Check your email spam folder and text message settings for alerts.
 - Note that the system relies on Watts' servers for alerts; ensure internet connectivity.
- **Indicator Light Discrepancies (e.g., Yellow vs. Orange):**
 - Newer models may use different colored indicator lights (e.g., orange instead of yellow) for certain statuses. Refer to the latest version of the user manual for accurate light interpretations.
 - If a light remains on after the washer turns off, it might be due to an internal timer (e.g., 15 minutes) before the valve fully closes.
- **Resetting the IntelliFlow Valve:**
 - During startup or troubleshooting, the IntelliFlow valve can be reset to the OFF condition by unplugging and reinstalling the leak sensor.

8. SPECIFICATIONS

Attribute	Value
Brand	Watts
Model Number	Intelliflow
Material	Polysulfone

Attribute	Value
Item Dimensions (L x W x H)	11.75 x 5 x 10.13 inches
Item Weight	4.27 pounds
Inlet Connection Type	Sweat
Outlet Connection Type	Sweat
Maximum Operating Pressure	150 psi (10 bar)
Valve Type	Diaphragm Valve
Power Source	Corded Electric (120V, 60Hz, 15A recommended)
UPC	098268272994

9. WARRANTY AND SUPPORT

For detailed warranty information and customer support, please refer to the official Watts documentation.

Official User Manual:


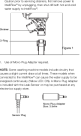




A comprehensive user manual in PDF format is available for download. This document contains detailed installation instructions, troubleshooting guides, and warranty information.

Download User Manual
(PDF)

Contact Watts:

For further assistance or to inquire about specific product details, please visit the official Watts website or contact their customer service department.

Visit Watts Brand
Store

<p>Installation Instructions IntelliFlow® Washing Machine Smart Water Shutoff Model A2C-SC / A2C-SC-WB</p>  <p>WATTS</p>	<p>Watts IntelliFlow A2C-SC/A2C-SC-WB Installation Instructions</p> <p>Installation guide for Watts IntelliFlow A2C-SC and A2C-SC-WB smart water shutoff and leak detection system for washing machines. Covers setup, operation, specifications, and troubleshooting to prevent water damage.</p>								
<p>Troubleshooting Guide</p> <table border="1"><thead><tr><th>PROBLEM</th><th>SOLUTION</th></tr></thead><tbody><tr><td>Unit will not power on</td><td>1. Check power source 2. Check unit power switch</td></tr><tr><td>Unit will not shut off</td><td>1. Check unit power switch 2. Check unit power source</td></tr><tr><td>Unit will not detect leaks</td><td>1. Check unit power switch 2. Check unit power source</td></tr></tbody></table>  <p>WATTS</p>	PROBLEM	SOLUTION	Unit will not power on	1. Check power source 2. Check unit power switch	Unit will not shut off	1. Check unit power switch 2. Check unit power source	Unit will not detect leaks	1. Check unit power switch 2. Check unit power source	<p>IntelliFlow Troubleshooting Guide</p> <p>Comprehensive troubleshooting guide for the IntelliFlow water management system, helping users resolve common issues with washing machines and identify status indicator lights.</p>
PROBLEM	SOLUTION								
Unit will not power on	1. Check power source 2. Check unit power switch								
Unit will not shut off	1. Check unit power switch 2. Check unit power source								
Unit will not detect leaks	1. Check unit power switch 2. Check unit power source								
<p>Quick Start Guide Fully Automated Leak Detection & Shutoff Valve</p>  <p>WATTS</p>	<p>Leak Defense System Quick Start Guide</p> <p>A quick start guide for the Leak Defense System, a fully automated leak detection and shutoff valve, covering setup, operation, and troubleshooting.</p>								
<p>LEAD FREE LFF113FP Wireless Smart Flood Protection Shut Down Valve with SentryPlus Alert Technology</p>  <p>WATTS</p>	<p>Watts LFF113FP Wireless Smart Flood Protection Shut Down Valve with SentryPlus Alert Technology</p> <p>Detailed information on the Watts LFF113FP Wireless Smart Flood Protection Shut Down Valve, including its features, materials, operation, specifications, and flow data. This valve is designed to automatically shut off water flow in case of continuous discharge from an RPZ Backflow Preventer.</p>								
<p>LEAD FREE Series PVS-7000 Flood Protection Valve Station with SentryPlus Alert Technology</p>  <p>WATTS</p>	<p>Watts Series PVS-7000 Flood Protection Valve Station with SentryPlus Alert Technology</p> <p>Technical overview of the Watts Series PVS-7000 Flood Protection Valve Station, featuring SentryPlus Alert technology for automatic flood detection and shutdown. Includes specifications, installation guidance, and features for preventing property damage.</p>								
<p>Installation Instructions BMS Flood Sensor Connection Kit</p>  <p>WATTS</p>	<p>Watts IS-FS-BMS Flood Sensor Connection Kit Installation Guide</p> <p>Comprehensive installation guide for the Watts BMS Flood Sensor Connection Kit (Model IS-FS-BMS). Learn step-by-step instructions for setup, wiring, and requirements for integrating flood detection into your building management system.</p>								