

## Manuals+

[Q & A](#) | [Deep Search](#) | [Upload](#)

[manuals.plus](#) /

- › [Conair](#) /
- › [INFINITI PRO by CONAIR 1875W Hair Dryer User Manual - Model 650X](#)

## Conair 650X

### INFINITI PRO by CONAIR 1875W Hair Dryer User Manual

Model: 650X

#### IMPORTANT SAFETY INFORMATION

This appliance is intended for household use only. Use on Alternating Current 60 Hz only. Designed to operate at 110-125 Volts. Never replace the fuse with one rated higher than the capacity of the circuit. Do not pull, twist, or wrap the line cord around the dryer, even during storage.

**WARNING: Keep away from water. Do not use this appliance near bathtubs, showers, basins, or other vessels containing water.**

#### PRODUCT OVERVIEW

The INFINITI PRO by CONAIR 1875W Hair Dryer is designed for efficient and effective hair drying. It features an AC motor for powerful airflow, ceramic technology for even heat distribution, and ionic technology to reduce frizz.



Image 1: The INFINITI PRO by CONAIR 1875W Hair Dryer, shown with both the concentrator and diffuser attachments.

### Key Features:

- **1875W AC Motor:** Provides powerful airflow for faster drying and extended motor life.
- **Ceramic Technology:** Delivers infrared heat for uniform drying and reduced hair damage.
- **Ionic Technology:** Helps achieve smooth, shiny hair with up to 75% less frizz.
- **3 Heat Settings:** Hot, Warm, and Cool options for versatile styling.
- **2 Speed Settings:** High and Low airflow control.
- **Cold Shot Button:** Locks in styles for long-lasting results.
- **Attachments:** Includes a diffuser for textured styles and a concentrator for smooth styles.
- **Removable Lint Filter:** For easy maintenance and prolonged motor life.



Image 2: Side view of the hair dryer, indicating the professional AC motor, removable lint filter, cold shot button, and 6 heat/speed settings.

# What's in the box



Concentrator



Diffuser



Pro dryer

Image 3: The product box contents, including the hair dryer, concentrator, and diffuser.

## SETUP

### Attaching Accessories:

The hair dryer comes with two attachments: a concentrator and a diffuser. These can be easily attached or removed from the front nozzle of the dryer.

1. To attach, align the accessory with the dryer's nozzle and push firmly until it clicks into place.
2. To remove, gently pull the accessory away from the nozzle.

# Concentrator

Full body & shine



Before



After

Image 4: Demonstration of the concentrator attachment, showing hair before and after achieving a smooth, straight style.

# Diffuser

Defined, smooth curls



Before



After

Image 5: Demonstration of the diffuser attachment, showing hair before and after achieving defined, smooth curls.

## OPERATING INSTRUCTIONS

### Powering On/Off:

Plug the hair dryer into a standard 110-125V AC outlet. Use the rocker switch on the handle to turn the dryer ON (High or Low) or OFF.

### Heat and Speed Settings:

The hair dryer features separate switches for heat and speed control, allowing for customized drying and styling.

- **Heat Settings:** Use the top rocker switch to select between HOT, WARM, or COOL.
- **Speed Settings:** Use the bottom rocker switch to select between HIGH or LOW airflow.

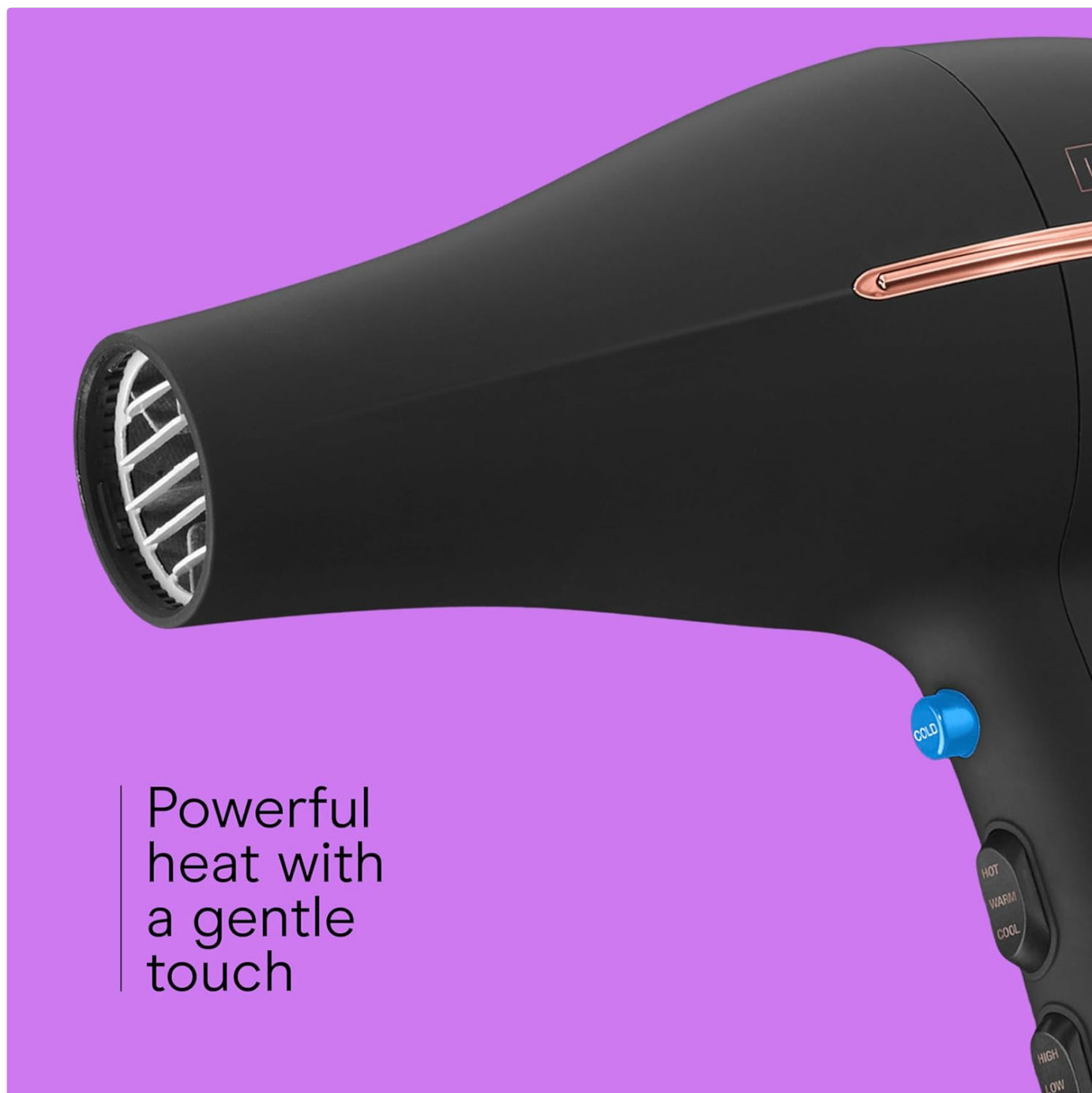


Image 6: A close-up view of the hair dryer's nozzle and the control switches for heat and speed settings.

#### **Cold Shot Button:**

Press and hold the blue 'COLD' button located above the heat/speed switches to instantly deliver a burst of cool air. This helps to set your style and add shine.

#### **Using the Concentrator:**

The concentrator attachment directs airflow to specific sections of hair, ideal for precision styling and achieving smooth, straight looks. Attach the concentrator to the dryer nozzle before use.

#### **Using the Diffuser:**

The diffuser attachment is designed to gently dry and enhance natural curls and waves, adding volume and reducing frizz. Attach the diffuser to the dryer nozzle before use.

MAINTENANCE

Cleaning the Removable Lint Filter:

Regular cleaning of the lint filter is crucial for maintaining optimal performance and extending the motor's life. The filter is located at the rear of the dryer.

1. Ensure the hair dryer is unplugged and completely cool before cleaning.
2. Gently twist or pull off the rear filter cover.
3. Remove any accumulated lint or hair using a small brush or by hand.
4. Replace the filter cover by aligning it and twisting or pushing until it secures.

General Care:

- Wipe the exterior of the dryer with a damp cloth. Do not use abrasive cleaners or solvents.
- Store the dryer in a cool, dry place when not in use.
- Avoid wrapping the power cord tightly around the dryer, as this can damage the cord.

TROUBLESHOOTING

- **Dryer not turning on:** Ensure the dryer is securely plugged into a working outlet. Check the reset button on the plug if applicable.
- **Reduced airflow or overheating:** The lint filter may be clogged. Refer to the 'Cleaning the Removable Lint Filter' section for instructions.
- **Hair not drying effectively:** Ensure appropriate heat and speed settings are selected for your hair type and desired style.






SPECIFICATIONS

Feature	Detail
Product Dimensions	8.37 x 3.47 x 11.92 inches
Item Weight	1.46 Pounds
Model Number	650X
UPC	074108401526
Brand	Conair
Color	Black With Bonus Diffuser and Concentrator
Material	Ceramic, Plastic
Wattage	1875 watts
Power Source	Electric

WARRANTY AND SUPPORT

For warranty information or customer support, please refer to the product packaging or contact Conair customer service directly. Keep your purchase receipt for proof of purchase.

## Related Documents - 650X

	<p><a href="#">Conair 1875 Watt Cord Keeper Styler: User Manual and Styling Guide</a></p> <p>Comprehensive guide for the Conair 1875 Watt Cord Keeper Styler, including important safety instructions, operating procedures, maintenance, and styling tips for professional results at home.</p>
	<p><a href="#">Conair Infiniti Pro 1875W AC Motor Hair Dryer: User Manual and Styling Guide</a></p> <p>Comprehensive user manual and styling guide for the Conair Infiniti Pro 1875W AC Motor Hair Dryer (Model 259). Includes safety instructions, operating procedures, maintenance tips, styling techniques, and warranty information.</p>
	<p><a href="#">Conair Aircare Hot Air Styling Kit BC171NCSR User Manual and Safety Guide</a></p> <p>Comprehensive user manual for the Conair Aircare Hot Air Styling Kit (Model BC171NCSR). Provides detailed safety instructions, operating procedures, maintenance guidelines, and warranty information for this 1000-watt styling tool.</p>
	<p><a href="#">InfinitiPRO by Conair BC7 Hot Paddle Brush: Instructions and Styling Guide</a></p> <p>Comprehensive guide for the InfinitiPRO by Conair BC7 Hot Paddle Brush, covering safety instructions, operating procedures, styling tips, maintenance, and warranty information. Learn how to use the diamond-infused ceramic technology and ionic features for smooth, shiny hair.</p>
	<p><a href="#">Conair 1-Inch Ceramic Flat Iron Model CS3: Instruction and Styling Guide</a></p> <p>Comprehensive guide for the Conair 1-Inch Ceramic Flat Iron Model CS3, covering user maintenance, safety instructions, operating procedures, styling tips, and warranty information.</p>
	<p><a href="#">Conair Hot Sticks Instant Heat Curling Iron CD88TCSR: Instruction and Styling Guide</a></p> <p>Learn how to use and maintain your Conair Hot Sticks Instant Heat Curling Iron (Model CD88TCSR). This guide covers features, safety, operation, styling tips, temperature settings, and warranty information for optimal hair styling.</p>