

## vine B0FFBC4MV4

# vine Smart Thermostat (Model B0FFBC4MV4) User Manual

Comprehensive instructions for installation, operation, and maintenance.

## 1. INTRODUCTION

This manual provides detailed instructions for the installation, setup, and operation of your vine Smart Thermostat, Model B0FFBC4MV4. This device is designed to offer efficient temperature control for your home, featuring Wi-Fi connectivity, 7-day programmable scheduling, and compatibility with smart home assistants like Alexa and Google Assistant. Please read this manual thoroughly before installation and use to ensure proper function and safety.

## 2. SAFETY INFORMATION

- **Power Disconnection:** Always turn off power to your heating and cooling system at the circuit breaker before installing or servicing the thermostat.
- **C-Wire Requirement:** A common wire (C-wire) is required for the operation of this thermostat. Ensure your system has a C-wire or install a C-wire power adapter if necessary.
- **Voltage Compatibility:** This thermostat is designed for 24V AC systems. It is not compatible with 110V-240V AC electric baseboard heat, millivolt systems, or systems that use S terminals for indoor/outdoor sensors. Attempting to install with incompatible systems can cause damage or injury.
- **Professional Installation:** If you are unsure about any part of the installation process, consult a qualified HVAC technician or electrician.
- **System Check:** After installation, verify that your heating and cooling system operates correctly.

## 3. PACKAGE CONTENTS

Verify that all items listed below are included in your package:

- vine Smart Thermostat (Model B0FFBC4MV4) x1
- Wall Plate x1
- Large Trim Plate x1 (for covering marks from previous thermostat)
- Screws Sets x2
- Wiring Labels x1
- User Manual x1

# What's in the Box



Figure 3.1: Package contents for the vine Smart Thermostat. Includes the thermostat unit, wall plate, trim plate, screws, wiring labels, and user manual.

## 4. COMPATIBILITY CHECK

Before installation, it is crucial to confirm your HVAC system's compatibility with the vine Smart Thermostat. This thermostat requires a **C-wire (common wire)** for operation and is designed for 24V AC systems.

### 4.1. System Types

The vine Smart Thermostat is compatible with approximately 90% of 24V AC systems, including:

- Conventional (2 Heat/2 Cool) - Gas, Oil, Electric, Boiler
- Heat Pump (2 stages Heat/Cool + 2 stages Auxiliary/Emergency)
- Heat-only or Cool-only Systems

### 4.2. Incompatible Systems

The thermostat is **not compatible** with:

- Electric baseboard heat (110VAC-240VAC)
- Millivolt systems
- Systems that do not support S terminals for indoor and outdoor sensors

### 4.3. Online Compatibility Tool

For a detailed compatibility check, visit the official vine support page: [vineconnected.com/support/thermostat](https://vineconnected.com/support/thermostat). This tool will guide you through identifying your current wiring and system type.

# Vine Compatibility Checker

## Compatible Systems

## Incompatible Systems

HVAC	Equipment Type	With C-wire	# of Wires	Wires May be	Wiring to vine Terminal
Conventional (Gas/Oil/ Electric)	Single Stage Heating&Cooling	yes	5	R,C,W1,Y1,G	RC,C,W/E,Y,G
	Single Stage Heating&Cooling	no	4	R,W1,Y1,G	RC,W/E,Y,G
	Multistage Heating &Cooling	yes	up to 7	R,C,W1,W2* Y1,Y2*,G	RC,C,W/E,O/B/ W2,Y1,Y2,G
	Boiler Radiant Heating Only	yes	3	R,C,W1	RC,C,W/E
	Furnace Forced-Air Heating Only	yes	4	R,C,W1,G	RC,C,W/E,G
	Cooling Only	yes	4	R,C,W1,G	RC,C,W/E,G
	Cooling Only	no	3	R,W1,Y	RC,C Y
	Heating OnlyFor example Gas Fireplace (24 Volts)	yes	3	R,C,W1	RC,C,W/E
	Gas Fireplace(24 Volts)	yes	3	R,C,W1	RC,C,W/E
Heat pump	Heat Pump with Auxiliary Heat	yes	up to 8	R,C,Y1,Y2*, W1,W2*,G,O/B	RC,C,Y,Y2,W/E,O/ B/W2,G,O/B/W2
	Heat Pump with Auxiliary Heat	yes	up to 6	R,C,Y1,Y2*, G,O/B	RC,C,Y,Y2,G, O/B/W2
Dual Fuel	Dual Fuel/Hybrid Heating	yes	up to 8	R,C,Y1,Y2*,W1 W2*,G,O/B	RC,C,Y,Y2,W/E,O/ B/W2,G,O/B/W2
	Dual Fuel/Hybrid Heating	no	up to 7	R,Y1,Y2*,W1, W2*,G,O/B	RC,Y,Y2,W/E,O/ B/W2,G,O/B/W2

Does not work with electric baseboard heat (110-240V AC), millivolt systems and does not support S terminals for indoor and outdoor sensors.

It has stranded wires .

It has thick, stranded wires connected by wire nuts.

It's labeled 110V or 120V.

- Communicating/Proprietary System
- Millivolt
- Line Voltage/ Electric Baseboard Heater
- Remote Sensor/ Humidifiers / Dehumidifiers

Please scan to check the compatibility before purchase!

Figure 4.1: Visual guide to HVAC system compatibility, including wiring details and warnings for incompatible systems.

Your browser does not support the video tag.

**Video 4.1:** This video demonstrates how to check the compatibility of your HVAC system with the vine Smart Thermostat, guiding you through identifying your current wiring and system type.

## 5. INSTALLATION

Follow these steps carefully to install your vine Smart Thermostat. Ensure you have performed the compatibility check before proceeding.

### 5.1. Tools Required

- Phillips Screwdriver
- Level (optional, for aesthetic alignment)
- Pencil (for marking)

### 5.2. Step-by-Step Installation

1. **Turn off Power:** Locate your circuit breaker for your HVAC system and turn off the power. Verify the system is off by checking if your old thermostat screen is blank or unresponsive.
2. **Remove Old Thermostat:** Carefully remove the cover of your old thermostat. Take a picture of the wiring for reference before disconnecting any wires. This will help ensure correct re-connection.
3. **Label Wires:** Use the provided wiring labels to mark each wire according to its terminal on your old thermostat. If you see any jumper wires, remove them; your new thermostat has internal jumpers.
4. **Remove Old Wall Plate:** Unscrew and remove the old wall plate.

5. **Install New Wall Plate:** Position the new vine wall plate on the wall. If needed, use the large trim plate to cover any marks or holes from the previous thermostat. Secure the new wall plate using the provided screws.
6. **Connect Wires:** Insert each labeled wire into its corresponding terminal on the new vine wall plate. Ensure each wire is securely connected. If your system has two power wires (R/RC and RH), adjust the internal switch on the thermostat unit to the connection position.
7. **Mount Thermostat:** Align the four clips on the thermostat unit with the wall plate. Gently push the thermostat onto the wall plate until it clicks into place.
8. **Restore Power:** Turn the power back on at your circuit breaker. The thermostat screen should light up.

## Easy to Install

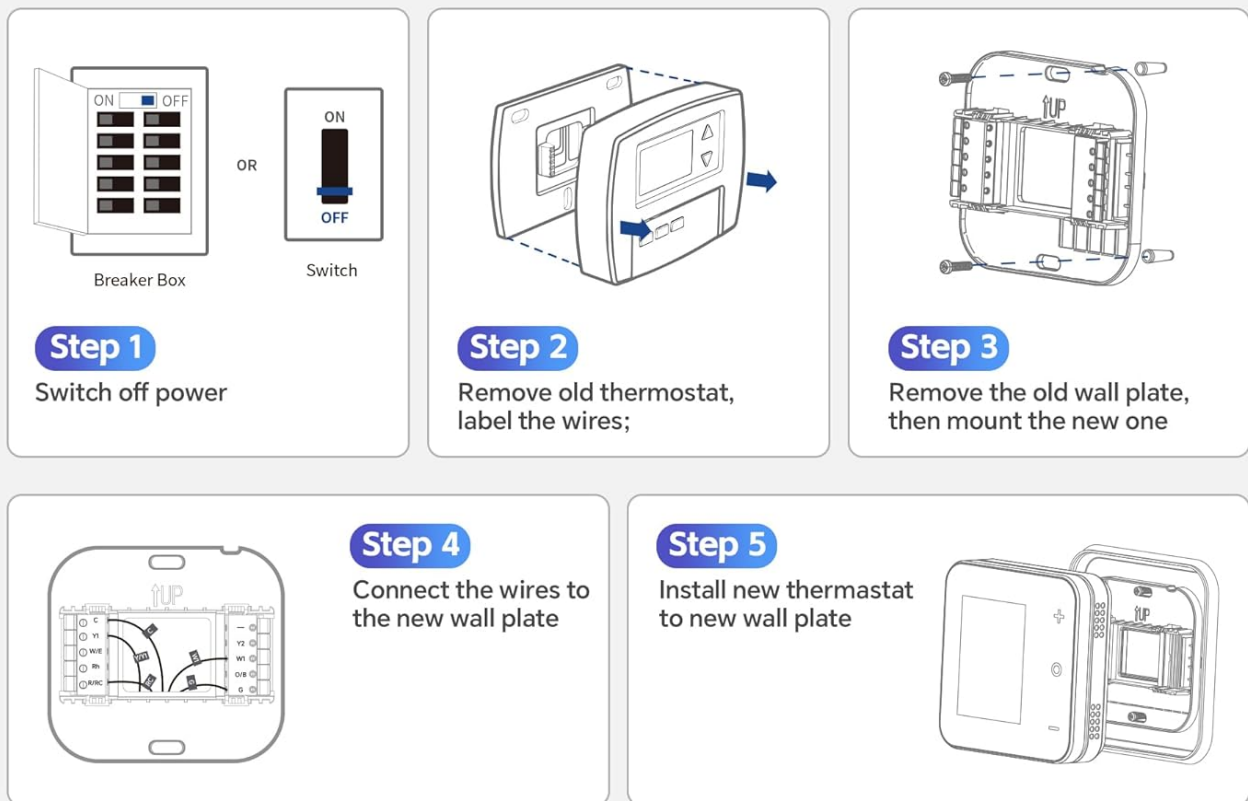


Figure 5.1: Visual steps for thermostat installation, including power off, wire labeling, and mounting.

Your browser does not support the video tag.

Video 5.1: This video provides a detailed guide on how to assemble and install the vine Smart Thermostat (Model TJ550), covering wiring and mounting procedures.

## 6. APP AND WI-FI SETUP

After physical installation, connect your vine Smart Thermostat to your home Wi-Fi network and the vine mobile application for remote control and smart features.

### 6.1. Download the App

Download the "Vine Thermostat" or "Smart Life" app from the Apple App Store (iOS) or Google Play Store (Android). You can also scan the QR codes provided in the app setup guide.

### 6.2. Create an Account and Connect

1. Open the app and sign in or create a new account. Note: You must create your own vine account to use third-party services and products. Guest accounts are not supported for full functionality.
2. On the thermostat, after initial power-up, you will be prompted to make some basic settings (e.g., heat type, heating/cooling stages). Complete these settings.
3. On the thermostat, touch the "Wi-Fi Setup" button.
4. In the app, touch the "+" button in the upper right corner to add a device. Select your thermostat model (TJ-550).
5. Follow the in-app instructions to connect the thermostat to your 2.4GHz Wi-Fi network.**Important: The vine thermostat DOES NOT support 5GHz Wi-Fi. Ensure your phone is connected to a 2.4GHz network during setup.**
6. Once connected, you can modify the thermostat's name within the app.

Your browser does not support the video tag.

**Video 6.1:** This video demonstrates the step-by-step process of setting up the vine Smart Thermostat app (Model TJ550), including account creation, Wi-Fi connection, and initial device configuration.

## 7. OPERATING INSTRUCTIONS

---

Your vine Smart Thermostat offers various features for comfortable and efficient home climate control.

### 7.1. Basic Temperature Control

On the main screen of the thermostat, use the "+" and "-" buttons to adjust the desired temperature. Tap the "O" button to switch between "Heating" or "Cooling" modes.

Your browser does not support the video tag.

**Video 7.1:** This video illustrates how to change the thermostat system mode (Heat, Cool, Off) and fan mode directly on the vine Smart Thermostat device.

### 7.2. Programmable Schedules (7-day, 8-period)

Utilize the 7-day programmable schedules with up to 8 periods per day to automatically adjust your home's temperature. This feature helps maintain comfort while optimizing energy consumption. Access and configure schedules through the Vine Thermostat App or Smart Life App.

# Energy Saving

7 day-programmable, up to 8 schedules for each day  
Get monthly energy report from the APP



## Optimize Energy Consumption

Vine thermostats help you save up to 25% per year on heating and cooling



Figure 7.1: The app interface for setting 7-day programmable schedules to optimize energy usage.

### 7.3. Remote Control via App

Control and monitor your thermostat from anywhere using the Vine Thermostat App or Smart Life App. Adjust settings, view current temperatures, and manage schedules remotely.





Figure 7.2: Remote control functionality via the Vine Thermostat App, allowing temperature adjustments from any location.

#### 7.4. Voice Control

The thermostat is compatible with Amazon Alexa and Google Assistant, enabling hands-free voice control. Simply use voice commands to adjust the temperature or change modes.

- "Alexa, set the room temperature to 72 degrees."
- "Hey Google, turn up the heat."

# Voice Control

Control the temperature with a compatible smart speaker or display

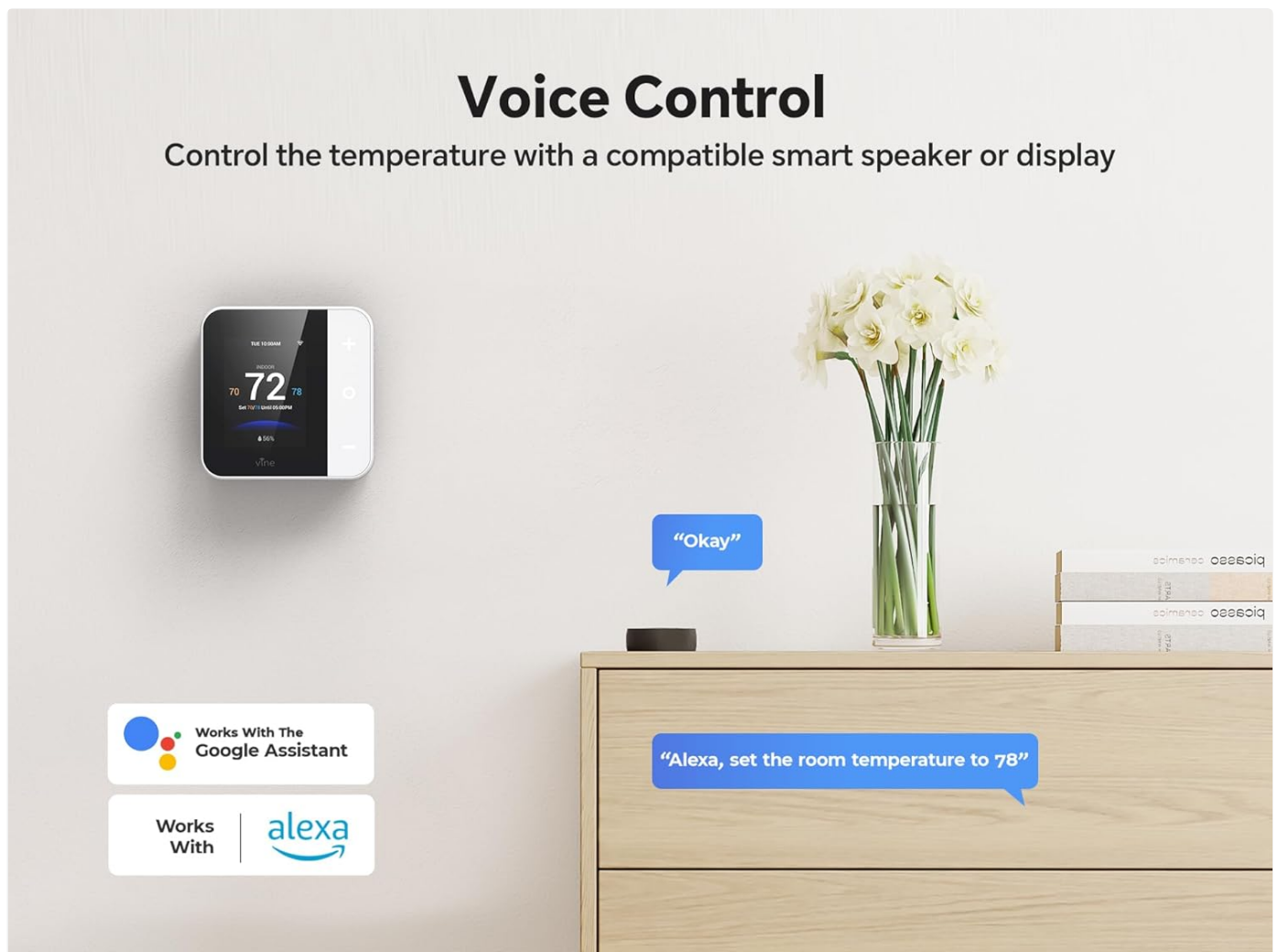


Figure 7.3: Voice control integration with Amazon Alexa and Google Assistant for convenient temperature management.

## 7.5. Auto Home/Away with Geofencing

Leverage geofencing technology to automatically adjust the temperature based on your proximity to home. The thermostat can switch to an energy-saving "Away" mode when you leave and return to a comfortable "Home" setting before you arrive.



# Auto Home/Away

with Geofencing Technology



Figure 7.4: Geofencing feature automatically adjusts thermostat settings as you enter or leave a predefined area.

## 7.6. Child Lock Functionality

Prevent unintended adjustments by children or others by activating the child lock feature through the mobile application. This locks the thermostat screen, requiring app access for changes.

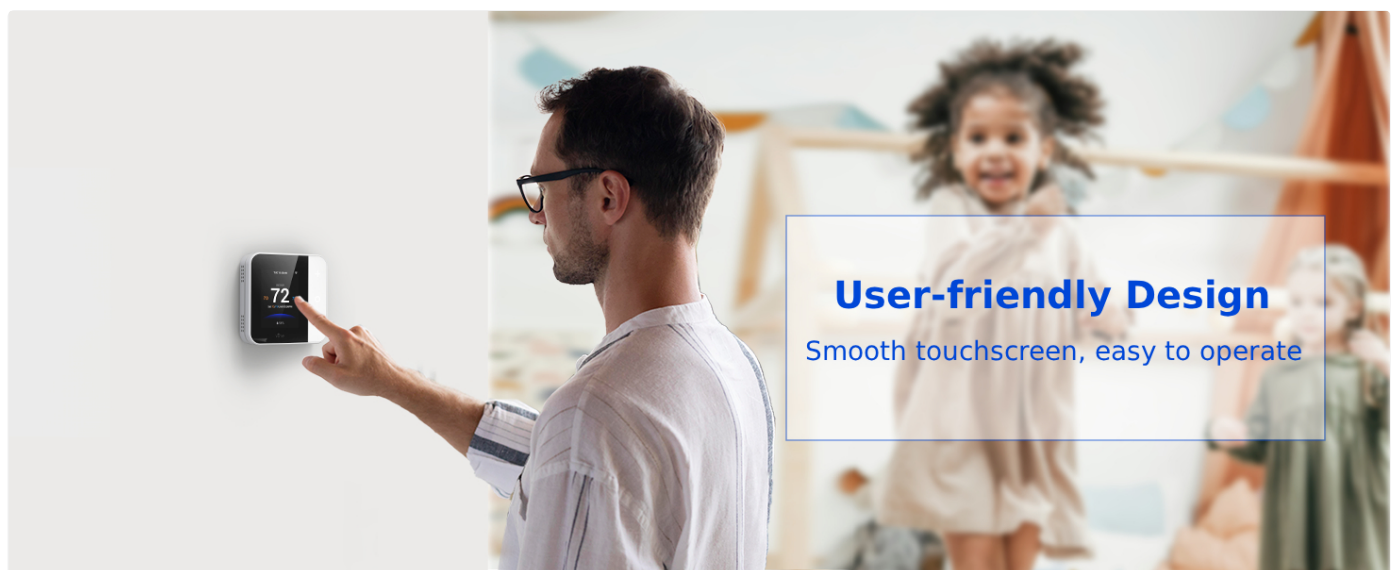


Figure 7.5: The child lock feature, activated via the app, prevents unauthorized changes directly on the thermostat screen.

## 8. MAINTENANCE

Regular maintenance ensures optimal performance and longevity of your vine Smart Thermostat.

- **Cleaning:** Gently wipe the thermostat screen and body with a soft, damp cloth. Avoid using abrasive cleaners or solvents.
- **Filter Change Reminders:** The thermostat app can provide reminders for HVAC filter changes. Follow your HVAC system manufacturer’s recommendations for filter replacement.
- **Software Updates:** Ensure your Vine Thermostat App is updated to the latest version for new features and performance improvements. Firmware updates for the thermostat may also be available through the app.

9. TROUBLESHOOTING

If you encounter issues with your vine Smart Thermostat, refer to the following common problems and solutions:

Problem	Possible Cause	Solution
Thermostat screen is blank.	No power to the thermostat.	Check the circuit breaker for your HVAC system and ensure it is ON. Verify C-wire connection.
Cannot connect to Wi-Fi.	Incorrect Wi-Fi password, 5GHz network selected, or weak signal.	Ensure you are connecting to a 2.4GHz Wi-Fi network. Double-check the password. Move the router closer or use a Wi-Fi extender.
Temperature reading seems inaccurate.	Thermostat location, drafts, or calibration needed.	Ensure the thermostat is not in direct sunlight or near heat sources/drafts. Check app settings for temperature calibration options.
HVAC system not responding to thermostat.	Incorrect wiring, power off, or system incompatibility.	Verify all wiring connections are secure and correct. Check power to the HVAC system. Re-confirm system compatibility.
Voice control not working.	Incorrect linking with Alexa/Google Assistant, or network issues.	Ensure the vine thermostat is correctly linked in your Alexa or Google Home app. Check Wi-Fi connectivity for both the thermostat and smart speaker.

10. SPECIFICATIONS

Feature	Detail
Brand	vine
Model Number	B0FFBC4MV4
Product Dimensions	0.98"D x 3.54"W x 3.54"H
Item Weight	10.5 ounces
Controller Type	Amazon Alexa, Android, Google Assistant, iOS
Special Features	Auto-Away Mode, Geofence Technology, Lockable, Programmable, Vacation Mode
Specific Uses	Air Conditioner, Boiler, Furnace, Heat Pump
Temperature Control Type	Cooling, Heating
Connectivity Technology	Wi-Fi (2.4GHz only)

Feature	Detail
Power Source	Corded Electric (C-wire required)
Display Type	LCD
Control Method	App, Touch, Voice
Mounting Type	Wall Mount





## 11. WARRANTY AND SUPPORT



For warranty information, technical support, or any questions regarding your vine Smart Thermostat, please contact vine customer service.

- **Manufacturer:** vine
- **Seller:** vine\_sszn
- **Online Support:** Refer to the vineconnected.com website for FAQs and additional resources.
- **Contact:** If you have any questions, please feel free to contact us at any time. (Specific contact details like email/phone are not provided in the product data, so a general statement is used).



### Related Documents - B0FFBC4MV4

 <div><div>TJ-550 Wi-Fi Thermostat</div><div>User Manual</div></div>	<a href="#">TJ-550 Wi-Fi Thermostat User Manual</a> User manual for the TJ-550 Wi-Fi Thermostat, detailing installation, setup, features, and warranty information. Learn how to connect to Wi-Fi, use the Vine app, and integrate with voice assistants like Alexa and Google Assistant.
 <div><div>TJ-560 Wi-Fi Thermostat</div><div>User Manual</div></div>	<a href="#">TJ-560 Wi-Fi Thermostat User Manual - Smart Home Control</a> Comprehensive user manual for the Vine TJ-560 Wi-Fi Thermostat. Learn about installation, setup, app integration with Alexa and Google Assistant, and troubleshooting for your smart home.
 <div><div>TJ-550 Wi-Fi Thermostat</div><div>User Manual</div></div>	<a href="#">Vine TJ-550 Wi-Fi Thermostat User Manual and Installation Guide</a> This user manual provides comprehensive instructions for installing, setting up, and using the Vine TJ-550 Wi-Fi Thermostat. Learn about its features, compatibility, app integration, and voice assistant connectivity.
 <div><div>Vine Smart Wi-Fi Programmable Thermostat with Nightlight TJ-919T</div><div>User Manual</div></div>	<a href="#">Vine TJ-919T Smart Wi-Fi Programmable Thermostat User Manual</a> User manual for the Vine TJ-919T Smart Wi-Fi Programmable Thermostat. Includes installation guides, app setup, compatibility information, advanced features, and warranty details for optimal home comfort and energy efficiency.

 <p>TJ-225 Smart Wi-Fi Thermostat with Nightlight</p> <p>Vine</p>	<p><a href="#">Vine TJ-225 Smart Wi-Fi Thermostat User Manual</a></p> <p>User manual for the Vine TJ-225 Smart Wi-Fi Thermostat with Nightlight, detailing installation, setup, app control, smart features, and warranty information.</p>
 <p>TJ-225 Smart Wi-Fi Thermostat with Nightlight</p> <p>Vine</p>	<p><a href="#">TJ-225 Smart Wi-Fi Thermostat with Nightlight Installation Guide</a></p> <p>Comprehensive installation guide for the TJ-225 Smart Wi-Fi Thermostat with Nightlight by Vine. Learn how to safely install and wire your new thermostat for various heating and cooling systems.</p>