

Manuals+

[Q & A](#) | [Deep Search](#) | [Upload](#)

manuals.plus /

> [StarEcho](#) /

> [StarEcho 10x12 FT Wood Gazebo with Hardtop Sloping Steel Roof Instruction Manual](#)

StarEcho XX-WDX1012GR00193

StarEcho 10x12 FT Wood Gazebo with Hardtop Sloping Steel Roof

Model: XX-WDX1012GR00193

1. INTRODUCTION

This manual provides detailed instructions for the assembly, operation, and maintenance of your StarEcho 10x12 FT Wood Gazebo. Please read all instructions carefully before beginning assembly and retain this manual for future reference. Proper assembly and maintenance are crucial for the longevity and safe use of your gazebo.

2. SAFETY INFORMATION

- **Anchoring:** The gazebo must be securely anchored to the ground as specified in the assembly instructions. Failure to do so may result in structural instability and potential injury or damage during high winds.
- **Assembly Personnel:** Assembly typically requires two or more adults. Some steps may require multiple individuals to safely lift and secure components.
- **Tools:** Use appropriate tools for assembly. Ensure all fasteners are tightened securely.
- **Site Selection:** Choose a level surface for installation. Uneven surfaces can compromise the structural integrity of the gazebo.
- **Clearance:** Ensure adequate clearance around the gazebo for safe use and maintenance.
- **Inspection:** Regularly inspect the gazebo for loose fasteners, damaged components, or signs of wear. Address any issues promptly.

3. PACKAGE CONTENTS

The StarEcho 10x12 FT Wood Gazebo is shipped in multiple boxes, typically four (4) in total. Before beginning assembly, verify that all parts are present and undamaged by comparing them against the parts list provided in the separate assembly guide. If any parts are missing or damaged, contact customer support immediately.



Figure 3.1: Assembled StarEcho 10x12 FT Wood Gazebo.

4. SETUP AND ASSEMBLY

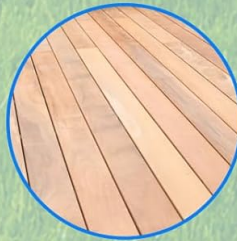
Assembly of the StarEcho Wood Gazebo requires careful attention to detail. Refer to the separate detailed assembly manual included with your product for step-by-step instructions, diagrams, and a complete parts list. The following are general guidelines and important considerations:

- **Preparation:** Clear the assembly area. Ensure you have sufficient space and a level surface.
- **Tools Required:** Basic hand tools (e.g., wrenches, screwdrivers, ladder) are typically required. Power tools may expedite assembly but use with caution to avoid overtightening or damaging components.
- **Part Identification:** All components are labeled. Match parts to the diagrams in the assembly guide before starting each step.
- **Anchoring:** The gazebo features robust base plates for securing the structure. It is imperative to anchor the gazebo to a solid foundation such as concrete, a wood deck, or a properly prepared grassland area using appropriate anchoring hardware (not always included).

**WOOD GRILL GAZEBO CAN BE INSTALLED
AND USED ON MANY VENUES**



**CEMENT
APPLICABLE**



**WOOD DECK
APPLICABLE**



**GRASSLAND
APPLICABLE**

Figure 4.1: Gazebo post base plate for anchoring to various surfaces.

10X12FT WOOD GRILL GAZEBO SIZE

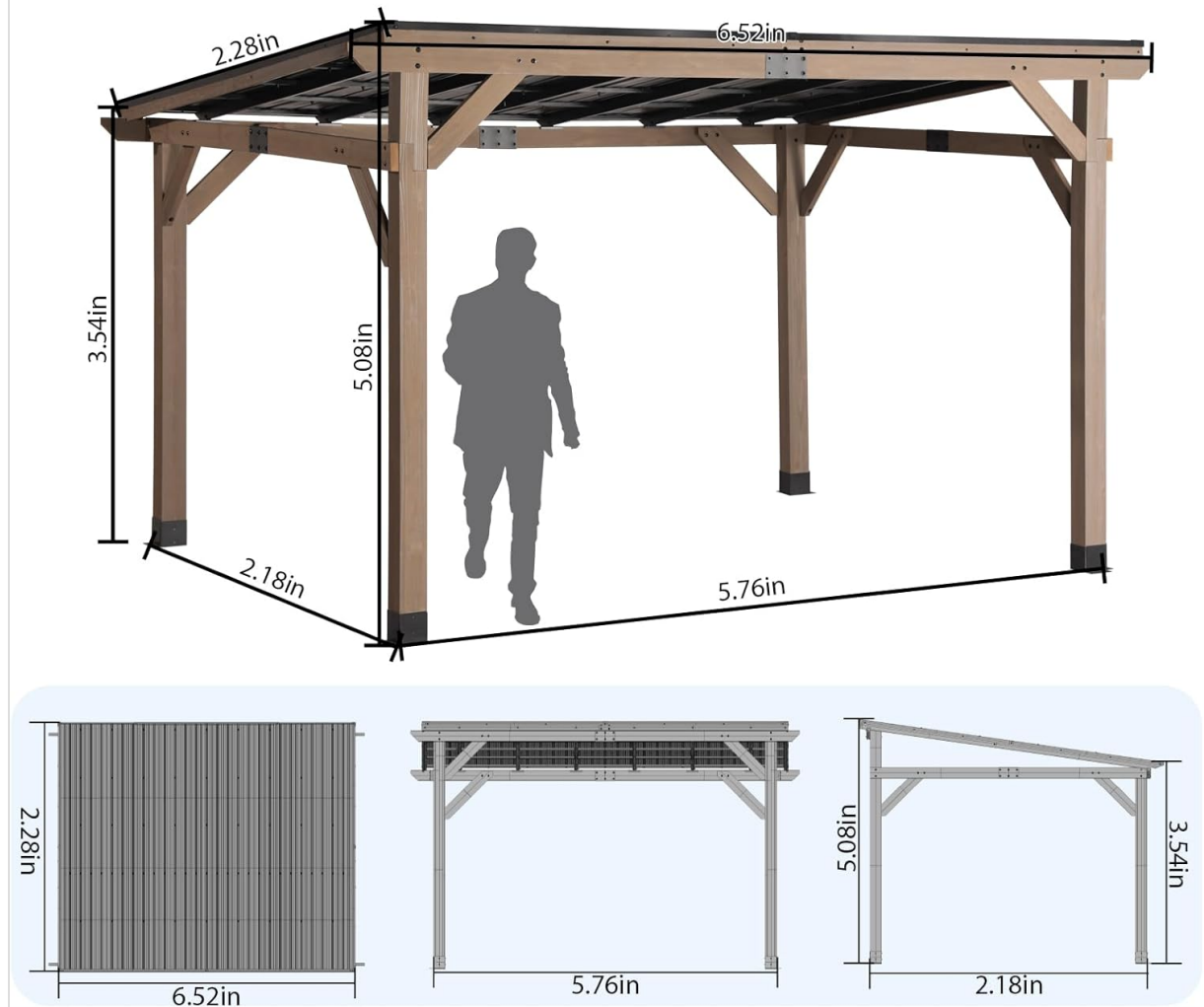


Figure 4.2: Dimensional overview of the 10x12 FT Wood Gazebo.

5. OPERATING AND USAGE

The StarEcho Wood Gazebo is designed for outdoor use, providing a sheltered space for various activities.

5.1 Intended Use

This gazebo is suitable for:

- Creating a shaded area on patios, decks, or in gardens.
- Providing shelter for outdoor dining, barbecues, and social gatherings.
- Enhancing outdoor living spaces.



Figure 5.1: Gazebo providing shelter for a barbecue and dining area.

5.2 Features and Benefits

- **Hardtop Sloping Steel Roof:** Provides protection from sun, rain, and snow. The sloping design and integrated guttering system facilitate efficient rainwater drainage.
- **UV Protection:** The roof material offers protection against harmful ultraviolet rays.
- **Ventilation:** The design allows for good airflow, which is beneficial when using a barbecue grill underneath, preventing smoke accumulation.
- **Sturdy Cedar Wood Frame:** Constructed from solid cedar wood for durability and stability, featuring triangular supports for enhanced structural integrity.

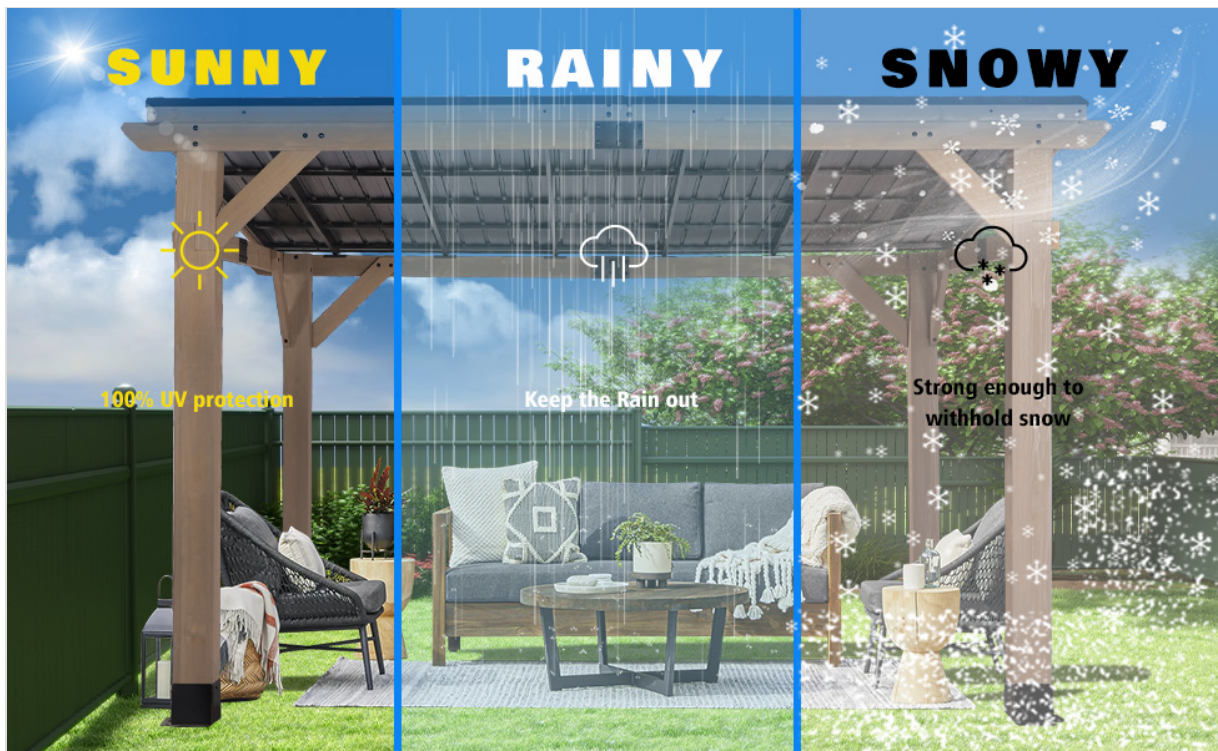


Figure 5.2: Gazebo performance under various weather conditions.



Figure 5.3: Detail of the natural wood construction and triangular support.

6. MAINTENANCE

Regular maintenance will help preserve the appearance and structural integrity of your gazebo.

- **Cleaning:** Clean the wood frame and steel roof periodically with mild soap and water. Avoid harsh chemicals that could damage the finishes.
- **Wood Care:** Cedar wood is naturally resistant to rot and insects, but applying a wood sealant or stain every few years can extend its life and maintain its appearance.
- **Fastener Check:** Periodically check all bolts, screws, and connections to ensure they remain tight. Retighten as necessary.
- **Snow Removal:** While the roof is designed for snow support, heavy accumulation of snow should be removed to prevent excessive stress on the structure, especially in regions with significant snowfall.
- **Guttering:** Keep the roof's guttering system clear of leaves and debris to ensure proper water drainage.

ROBUST STRUCTURAL DESIGN

Triangular supports bracing stabilizes the structure



Strong under snow



Resistant to rain erosion

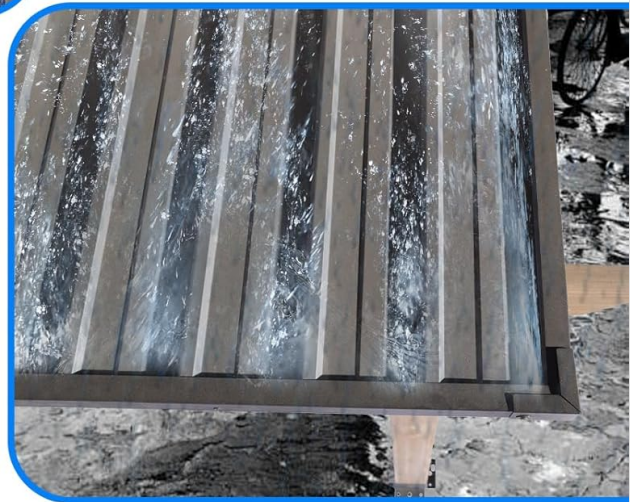


Figure 6.1: Gazebo's robust design for snow and rain resistance.

7. TROUBLESHOOTING

This section addresses common issues that may arise during or after assembly.

- **Missing/Damaged Parts:** If you discover missing or damaged components upon unboxing, do not proceed with assembly. Contact StarEcho customer support with your product model number and a description of the issue for assistance.
- **Difficulty Aligning Parts:** Ensure the gazebo is being assembled on a completely level surface. Slight adjustments may be needed during assembly to align bolt holes. Do not force parts together; re-check the assembly steps.
- **Wobbling/Instability:** Verify that all fasteners are securely tightened. Confirm that the gazebo is properly anchored to the ground. An uneven installation surface can also contribute to instability.
- **Water Leaks:** Ensure all roof panels are correctly installed and sealed according to the assembly instructions. Check for any gaps or misaligned panels.

8. SPECIFICATIONS

Feature	Specification
---------	---------------

Brand	StarEcho
Model Number	XX-WDX1012GR00193
Product Dimensions (L x W x H)	142.2" x 121.7" x 114.4"
Item Weight	380 Pounds
Frame Material	Cedar Wood, Metal
Roof Material	Steel
Water Resistance Level	Waterproof
Ultraviolet Light Protection	Yes
Assembly Required	Yes

9. WARRANTY INFORMATION

Specific warranty details for the StarEcho 10x12 FT Wood Gazebo are typically provided with your purchase documentation or can be obtained directly from the manufacturer or authorized seller. Please retain your proof of purchase for any warranty claims.

10. CUSTOMER SUPPORT

For further assistance, missing parts, or technical support, please contact StarEcho customer service. Refer to your purchase receipt or the product packaging for contact information.