

hohem iSteady V3 Ultra

hohem iSteady V3 Ultra Gimbal Stabilizer User Manual

Model: iSteady V3 Ultra

Introduction	Package Contents	Setup	Operating	Maintenance	Troubleshooting
	Specifications		Warranty & Support		

1. INTRODUCTION

The hohem iSteady V3 Ultra is an advanced 3-axis gimbal stabilizer designed for smartphones, offering enhanced video recording capabilities. It features AI auto-tracking, a detachable touchscreen remote, a built-in extension rod, a tripod, and an integrated fill light. This manual provides detailed instructions for the proper use and maintenance of your device.

2. PACKAGE CONTENTS

Verify that all items listed below are present in your package:

- iSteady V3 Ultra Gimbal Stabilizer
- Magnetic AI Tracker with Fill Light
- Detachable Touchscreen Remote Controller
- USB-C Charging Cable
- Hex Key
- Storage Pouch
- Quick Start Guide
- Warranty Card and Safety Guidelines



Image: The hohem iSteady V3 Ultra Gimbal Stabilizer shown with all its included accessories, such as the AI tracker, remote, charging cable, and storage pouch.

3. SETUP

1. **Charge the Gimbal:** Connect the USB-C charging cable to the gimbal's charging port and a power source. Ensure the gimbal is fully charged before first use. The battery indicator lights will show charging status.

2. **Mount Your Smartphone:** Extend the phone clamp and securely place your smartphone in the center. Ensure the phone is balanced to prevent motor strain. The gimbal supports phones up to 14.11 oz (400g).
3. **Attach AI Tracker and Fill Light:** The magnetic AI tracker with built-in fill light can be attached to the top of your smartphone. Ensure it is securely seated.
4. **Attach Detachable Remote:** The 1.22" touchscreen remote controller magnetically attaches to the gimbal handle. It can be detached for remote operation.
5. **Power On:** Press and hold the power button on the gimbal until the indicator lights illuminate.
6. **App Connection (Hohem Joy):** Download the "Hohem Joy" app from your smartphone's app store. Open the app and follow the on-screen instructions to connect your gimbal via Bluetooth. This enables advanced features and firmware updates.

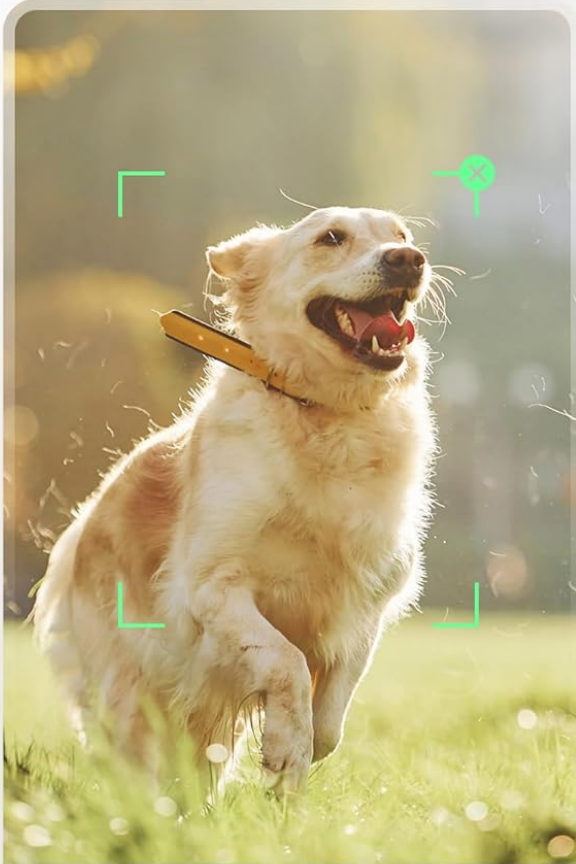
4. OPERATING INSTRUCTIONS

4.1 AI Auto Tracking

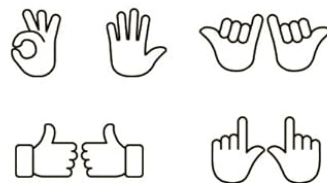
The iSteady V3 Ultra features intelligent AI tracking for faces, pets, and objects. This allows the gimbal to automatically follow your subject, keeping it centered in the frame.

- **Activation:** Activate AI tracking via the detachable touchscreen remote or the Hohem Joy app.
- **Subject Selection:** The AI tracker can detect and lock onto a subject automatically.
- **Gesture Control:** Use specific hand gestures to initiate or stop tracking, or to switch between landscape and portrait modes.

Auto Follow Magic



**Multimodal
AI Tracker**



**Gesture
Control**

Image: Demonstrates the AI auto-tracking capability, showing the gimbal following a dog and a person using hand gestures for control.

4.2 Detachable Touchscreen Remote Control

The 1.22" full-color touchscreen remote provides control over the gimbal from up to 33 feet (10 meters) away.

- **Functions:** Adjust tracking modes, preview shots, fine-tune settings, and control recording.
- **Detachment:** The remote can be easily detached from the gimbal handle for flexible operation.

Control From Afar



Image: A user operating the gimbal remotely with the detachable touchscreen controller, positioned several feet away from the device.

4.3 3-Axis Stabilization

The iSteady V3 Ultra utilizes upgraded iSteady 9.0 technology to provide smooth, stable footage across three axes (pan, tilt, roll), minimizing shakes and jitters.

- **Pan Axis:** Allows for 360° infinite rotation.
- **Tilt Axis:** Range of -35° to 45°.
- **Roll Axis:** Range of -195° to 135°.

Pro-Grade Stable



Image: Illustrates the 3-axis stabilization in action, capturing smooth video of a wedding event.

4.4 Built-in Extension Rod and Tripod

The gimbal integrates an 8-inch extension rod and a foldable tripod for versatile shooting angles and stable placement.

- **Extension Rod:** Extend the rod for higher or wider shots, ideal for selfies or group photos.
- **Tripod:** Unfold the base to use the gimbal as a stationary tripod for stable recording or time-lapses.

Reach Farther

2.28–3.86 in



Image: Shows the gimbal's built-in extension rod being used to capture a wider selfie shot on a beach.

4.5 Smart Fill Light Control

The integrated fill light provides adjustable brightness and color temperature to enhance lighting conditions for your videos and photos.

- **Adjustment:** Control the fill light settings remotely via the touchscreen remote or the Hohem Joy app.
- **Color Temperature:** Choose between various color temperatures (e.g., cool, neutral, warm) to match your environment.

Perfect Skin Tone

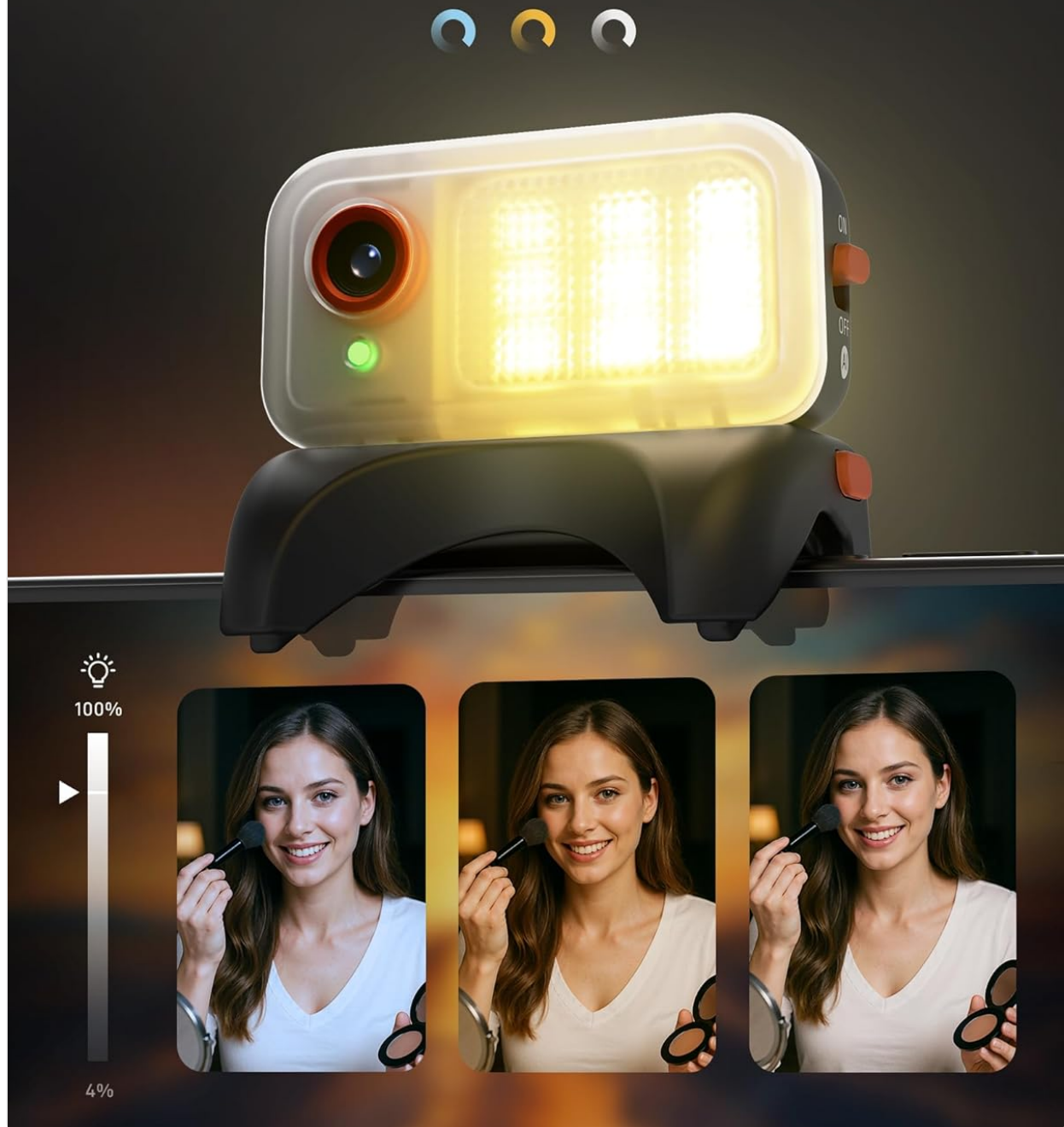


Image: Close-up of the magnetic AI tracker with fill light, demonstrating its adjustable brightness and color temperature settings.

4.6 Hohem Joy App Features

The companion Hohem Joy app unlocks the full potential of your iSteady V3 Ultra, offering creative modes and intelligent templates.

- **Intelligent Templates:** Access pre-set shooting modes for various scenarios.
- **Creative Modes:** Explore features like Dolly Zoom, Inception, and Panorama.
- **Firmware Updates:** Keep your gimbal updated with the latest features and performance improvements.

5. MAINTENANCE

- **Cleaning:** Use a soft, dry cloth to clean the gimbal. Avoid using liquid cleaners or solvents.
- **Storage:** Store the gimbal in its storage pouch in a cool, dry place when not in use. Avoid extreme temperatures.
- **Battery Care:** For optimal battery life, charge the gimbal regularly, even if not in frequent use. Avoid fully discharging the battery for extended periods.
- **Motor Calibration:** If the gimbal appears unbalanced or drifts, perform a motor calibration through the Hohem Joy app.

6. TROUBLESHOOTING

Gimbal does not power on:

Ensure the battery is charged. Connect the gimbal to a power source using the USB-C cable and try again after a few minutes.

Gimbal is unstable or vibrating:

- Ensure your smartphone is properly mounted and balanced in the clamp.
- Perform a motor calibration via the Hohem Joy app.
- Check for any obstructions preventing free movement of the gimbal axes.

Cannot connect to Hohem Joy app:

- Ensure Bluetooth is enabled on your smartphone.
- Restart both the gimbal and your smartphone.
- Make sure the Hohem Joy app has necessary permissions.

AI tracking is not working:

- Ensure the magnetic AI tracker is securely attached and powered on.
- Verify that the AI tracking feature is activated in the app or via the remote.
- Ensure sufficient lighting and clear visibility of the subject.

7. SPECIFICATIONS

Feature	Detail
Model	iSteady V3 Ultra
Product Dimensions	7.48"D x 4.84"W x 2.64"H
Folded Size	3.9" x 1.7" x 6.3"
Item Weight	15.1 ounces (430g)
Max. Payload	14.11 oz (400g)
Battery	1 Lithium Ion battery (included)

Feature	Detail
Battery Capacity	1600mAh (approx. 9 hours runtime)
Charging Time	Approx. 2.5 hours
Stabilization	3-Axis (iSteady 9.0)
Controllable Angle (Pan)	360° Infinite
Controllable Angle (Roll)	-195° to 135°
Controllable Angle (Tilt)	-35° to 45°
AI Tracking Control	Touchscreen & Gesture Control
AI Tracker Sensor	2MP
Remote Control	Detachable 1.22" Full-Color Touchscreen Remote
Extension Rod Length	8 inches (approx.)
Compatible Devices	Various smartphones including iPhone 17/16/15/14/13/12/11 Pro Max, Samsung Galaxy S21/S21 Ultra S23 Ultra, OnePlus, Huawei, etc.

Compared with iSteady V3		
Model	iSteady V3 Ultra	iSteady V3
Built-in AI Tracking	People & Objects	Only People
AI Tracking Control	Touchscreen & Gesture Control	Gesture Control
AI Tracker Sensor	2MP	1MP
Gesture Recognition Distance	16.40 ft (5 m)	11.48 ft (3.5 m)
AI Tracking Distance	22.97 ft (7 m)	16.40 ft (5 m)
Remote Controller	Full-Color Touchscreen Remote	Regular Remote
AI Live Feed	1.22" Touchscreen for AI Live Feed	/
Settings	Quick Settings on Touchscreen	App or Buttons
Max. Payload	14.11 oz (400 g)	10.58 oz (300 g)
Stabilization	iSteady 9.0	iSteady 8.0
Controllable Angle	Pan: 360° Infinite, Roll: -195° to 135°, Tilt: -35° to 45°	Pan: -120° to 210°, Roll: -195° to 135°, Tilt: -35° to 45°

Image: A detailed comparison table highlighting the enhanced features of the iSteady V3 Ultra compared to its predecessor, the iSteady V3.

8. WARRANTY & SUPPORT

Your hohem iSteady V3 Ultra Gimbal Stabilizer is covered by a manufacturer's warranty. Please refer to the included Warranty Card for specific terms and conditions, including warranty period and coverage details. For technical support, troubleshooting assistance, or service inquiries, please visit the official hohem website

or contact their customer service department. You can also find additional resources and FAQs on the [hohem Store on Amazon](#).