

SOLIOM SH801-4

SOLIOM SH801-4K Wireless Outdoor Security Camera System User Manual

Model: SH801-4 | Brand: SOLIOM

INTRODUCTION

The SOLIOM SH801-4K Wireless Outdoor Security Camera System provides advanced surveillance for your home. This 4-camera kit features 8MP Ultra HD resolution for clear day and night vision, solar power for continuous operation, and intelligent motion detection with radar technology to minimize false alarms. With 360° pan-tilt capabilities and no monthly subscription fees, your property remains secure and monitored.

- **8MP Ultra High Definition:** Capture crisp 3840 x 2160 resolution video, allowing for detailed zoom up to 50ft (15 meters).
- **Advanced Radar Technology:** Reduces false alarms by 99% in high-temperature regions by accurately detecting motion.
- **No Monthly Fees:** Recordings are securely stored on the pre-installed 32GB local storage (expandable to 128GB) within the SOLIOMbase.
- **Cross-Camera 360° AutoTracking:** Automatically links event videos across multiple cameras and allows live viewing from four areas on one screen.
- **Forever Solar-Powered:** Detachable solar panels ensure continuous power with just three hours of sunlight daily, even on cloudy days.
- **360° View & Stable Wi-Fi:** Pan and tilt features eliminate blind spots, with compatibility for dual-band (2.4G or 5G) Wi-Fi and Ethernet connectivity to the Soliombase.

SETUP INSTRUCTIONS

1. Unboxing and Component Overview

Carefully unpack all components from the box. Ensure all items listed in the packing list are present.

Video: Unboxing and overview of the SOLIOM SH801-4K system components, including cameras, solar panels, and the Soliombase.

2. Base Station Connection

Connect the Soliombase to a power source and your internet router using the provided Ethernet cable. The base station's

LED indicator will turn red upon initial power-up.

Image: The SoliomBase SH801, highlighting its local storage and secure data features.

3. Camera Power On and Sync

Turn on each camera by pressing and holding the power button. The cameras will emit a voice prompt indicating they are ready for pairing. Press the sync button on the Soliombase for over 3 seconds to initiate the pairing process. The cameras will automatically connect to the base station.

Video: Demonstration of powering on cameras, syncing with the Soliombase, and initial app setup.

4. App Setup and Configuration

Download the SOLIOM Home app from your device's app store. Follow the in-app instructions to add your devices. You will be guided through connecting to Wi-Fi and configuring initial settings. The app allows for individual camera naming and area assignment (e.g., Front Door, Living Room).

Video: Step-by-step guide on app installation, device pairing, and initial configuration for the SOLIOM system.

5. Physical Installation

Mount the cameras in desired outdoor locations, ensuring optimal solar panel exposure. The detachable solar panel with a 10ft cable provides flexibility for placement. Use the provided mounting hardware and guide stickers for secure installation. Ensure the camera is positioned to cover the desired surveillance area without obstructions.

Install In Just Minutes

You can place the solar panel anywhere with the 10ft cable, make sure to rotate it to a sunny location



Image: Illustration of flexible and easy installation with the detachable solar panel and 10ft cable.

Video: Demonstration of the physical installation process for the SOLIOM camera, highlighting ease of setup.

OPERATING INSTRUCTIONS

1. Live View and Controls

Access the live feed from your cameras via the SOLIOM Home app. The app provides a synchronized multi-area screen display for easy viewing of all connected cameras. Use the on-screen controls to navigate and manage your cameras.

All-Angle Home Surveillance, Easier and Safer

Enjoy a synchronized multi-area screen display for easy viewing

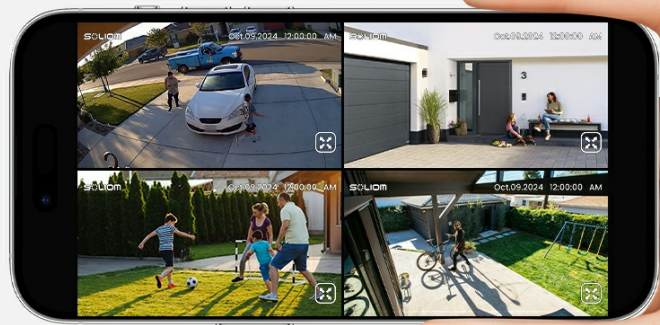


Image: The app interface displaying live feeds from multiple cameras simultaneously.

2. Pan, Tilt, and Zoom

Utilize the 360° pan and tilt feature to adjust the camera's viewing angle directly from the app. The magnifier zoom function allows you to zoom in on specific details within the 8MP Ultra HD feed.



Image: Visual guide for activating automatic motion tracking within the app.

Magnifier Zoom Function

Tap the screen to zoom in on the details

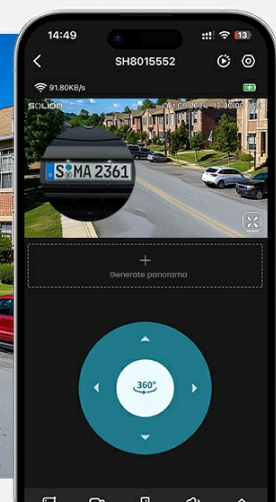


Image: The magnifier zoom function in action, showing clear detail on a license plate.

3. Motion Detection and Alerts

Configure motion detection settings, including sensitivity and detection zones, to receive instant notifications for human, pet, or vehicle activity. The built-in radar technology helps reduce false alarms.

Monitor Just the Important Areas and Reduce Unnecessary Notifications

You can set up activity zones to adjust your security for better protection and peace of mind



Image: Setting up custom activity zones to focus motion detection on important areas.



Image: Instant notifications on a smartphone when motion or people are detected.

4. Night Vision

The cameras offer clear full-color night vision up to 26ft (8 meters) with a 450-lumen spotlight, or standard infrared night vision up to 33ft. Adjust night vision modes in the app settings.

See in UHD 4K with Clear Full Color Night Vision

f/1.6 Lens | 20% ↑ Light | 6 spotlights | 26ft See Faces Clearly | 33ft Night Vision



Image: Example of UHD 4K with clear full-color night vision.

5. Two-Way Audio

Communicate in real-time with individuals in view of the camera using the two-way audio feature, effective up to 20 feet.

Clear Two-Way Audio

Communicate in real time
with anyone who walks into view.
(Up to 20 feet)

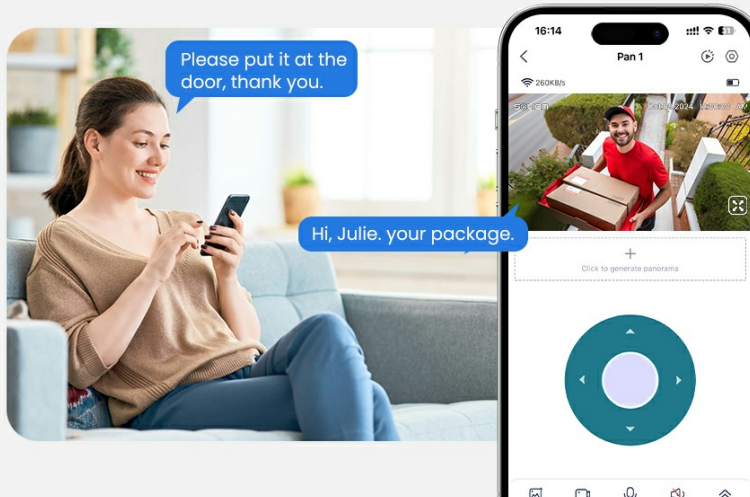


Image: Clear two-way audio communication via the app.

6. Recording and Storage

All recordings are encrypted and stored securely in the Soliombase with a pre-installed 32GB local storage, supporting up to two months of motion video. Storage is expandable up to 128GB. Easily browse and manage recordings through the app.

Day browse by one tap

With just one click, you can see at a glance all the videos recorded in a day. Afterwards, you can download, delete the videos you want, or just keep them as loop recordings.

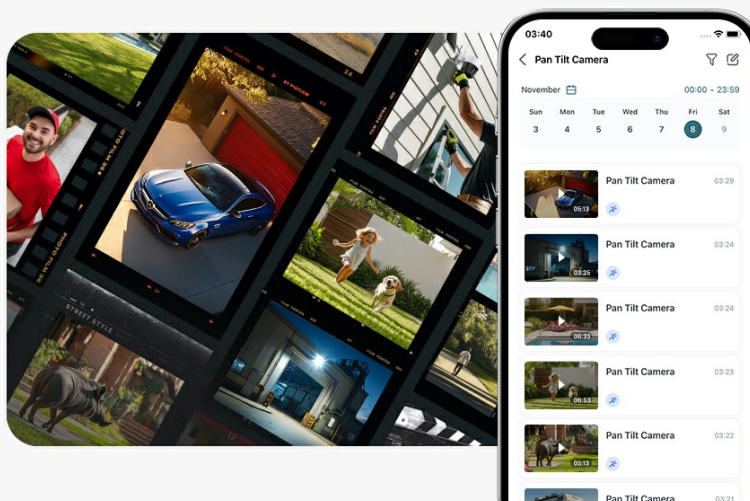


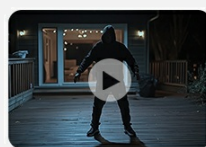
Image: Day browsing feature for recorded videos in the app.

7. Cross-Camera Tracking

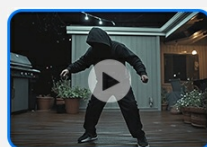
The system automatically links videos of events from the same period across different cameras, providing a comprehensive view of activity. This feature simplifies tracking movement across your property.

Cross-CameraTracking

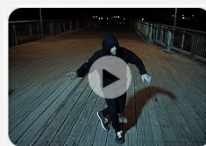
With Soliombase S801, the AI identifies people and merges related clips into a single, simple event.



Front Door 00:56:25



Side Yard 00:57:32



Back Yard 00:58:22



Garage 00:59:36

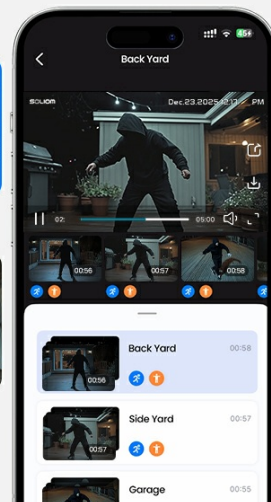


Image: Cross-camera tracking feature, merging related event clips.

MAINTENANCE

1. Solar Panel Efficiency

Ensure solar panels are kept clean and free from debris to maintain optimal charging efficiency. Position panels to receive maximum direct sunlight throughout the day. The system is designed to operate even on cloudy or rainy days with minimal sunlight exposure.

Efficient charge even on cloudy or rainy days

Ordinary cameras can't be charged on rainy days.

2X
Solar Charging

5200 mAh
Large Battery Capacity



Charging Abnormal Reminding will be updated soon

Image: Efficient solar charging even in less ideal weather conditions.

2. Weather Resistance

The cameras are IP65 weather-resistant, designed to withstand various outdoor conditions including wind, rain, and snow, operating effectively in temperatures ranging from 14°F to 140°F.

IP65 Weather Resistance

No matter the wind, rain, or snow, the camera can still work perfectly.

14°F  140°F



Image: IP65 Weather Resistance ensures reliable operation in diverse climates.

TROUBLESHOOTING

- **No Power/Charging:** Ensure solar panels are clean and receiving direct sunlight. Check all cable connections.
- **Connectivity Issues:** Verify the Soliombase is connected to your router via Ethernet and powered on. Ensure cameras are within Wi-Fi range. Restart the Soliombase and cameras if issues persist.
- **False Alarms:** Adjust motion detection sensitivity in the app. Utilize detection zones to exclude areas with frequent non-threatening movement.
- **Poor Video Quality:** Check your Wi-Fi signal strength. Ensure the camera lens is clean.
- **Audio Problems:** Verify microphone and speaker settings in the app. Ensure no obstructions are blocking the audio components.

SPECIFICATIONS

Feature	Detail
Model Name	4-cam kit (SH801-4)
Video Capture Resolution	8MP Ultra HD (3840 x 2160)
Power Source	Solar Powered (3.7 Volts, 1.44 watts)
Connectivity Technology	Wireless (5G & 2.4G Wi-Fi), Ethernet
Viewing Angle	360 Degrees (Pan/Tilt)
Night Vision Range	33 Feet (IR), 26 Feet (Color with spotlight)
Flash Memory Installed Size	32 GB (expandable to 128 GB)
Water Resistance Level	IP65

Operating Temperature	14°F to 140°F
Included Components	4x SH801-4 cams, Soliombase, power adaptor, 4x solar panels, Ethernet cable, USB cable, User Guide, Fitting Bags

SUPPORT

For further assistance, technical support, or warranty inquiries, please refer to the contact information provided in your product packaging or visit the official SOLIOM website. Keep your purchase receipt for any warranty claims.