



[Manuals.plus](#) /

› [Reyke](#) /

› Reyke Android Tracker: Google Find My Compatible Item Locator User Manual

Reyke B0FR4XTSDL

Reyke Android Tracker: Google Find My Compatible Item Locator User Manual

Model: B0FR4XTSDL

INTRODUCTION

The Reyke Android Tracker is a compact and practical device designed to help you locate your valuable items. Utilizing the Google Find My Device network, this tracker allows you to quickly find misplaced keys, wallets, luggage, and other personal belongings. This manual provides detailed instructions for setup, operation, and maintenance to ensure optimal performance of your Reyke Android Tracker.



Image: The Reyke Android Tracker, a small, circular device, shown with a key ring attachment, highlighting its compact design.

SETUP GUIDE

Before beginning the setup process, ensure your Android smartphone or tablet has the latest version of the Google Find My Device app installed. Also, verify that Bluetooth and mobile data are enabled on your device.

Video: Wireless Tag Setup for Android

Your browser does not support the video tag.

Video: A step-by-step guide demonstrating how to set up the Wireless Tag with an Android device using the Google Find My Device app.

1. Fast Pair Setup

1. **Install Google Find My Device App:** Download and install the latest version of the Google Find My Device app from the Google Play Store.
2. **Enable Bluetooth and Mobile Data:** Ensure Bluetooth and mobile data are turned on in your Android phone's settings.

3. **Activate Tracker:** Press the power button once on your Reyke Android Tracker.
4. **Initiate Pairing:** Keep the tracker near your Android phone. A pop-up notification for "Wireless tag" should appear on your phone screen.
5. **Connect:** Tap "Connect" on the pop-up.
6. **Agree and Continue:** Follow the on-screen steps, review the terms, and tap "Agree and Continue" to complete the pairing process.



Image: An Android phone displaying the Google Find My Device app interface, showing the location of a "Wireless tag" on a map, alongside the physical Reyke tracker.

2. Manual Setup (If Fast Pair Fails)

If the Fast Pair pop-up does not appear, you can set up your tracker manually:

1. **Go to Settings:** Open your Android phone's "Settings" app.
2. **Navigate to Google Services:** Scroll down and tap on "Google" (under Services & preferences).
3. **Select All Services:** Tap "All services" (or similar, depending on your Android version).
4. **Find Devices:** Locate and tap on "Devices" (under Connected devices & sharing).
5. **Enable Scan for Nearby Devices:** Ensure "Scan for nearby devices" is toggled ON.

6. **Select Wireless Tag:** Your "Wireless tag" should appear in the list of available devices. Tap on it.
7. **Complete Setup:** Tap "Agree and Continue" and follow any remaining on-screen prompts to finish the setup.

OPERATING YOUR REYKE ANDROID TRACKER

Locating Items with Sound

When your Reyke Android Tracker is within Bluetooth range (up to 50 meters or 180 feet), you can make it emit a sound to help you find it. Open the Google Find My Device app, select your tracker, and tap the "Play sound" option. The tracker will emit a loud beep (up to 105dB) to guide you to its location.

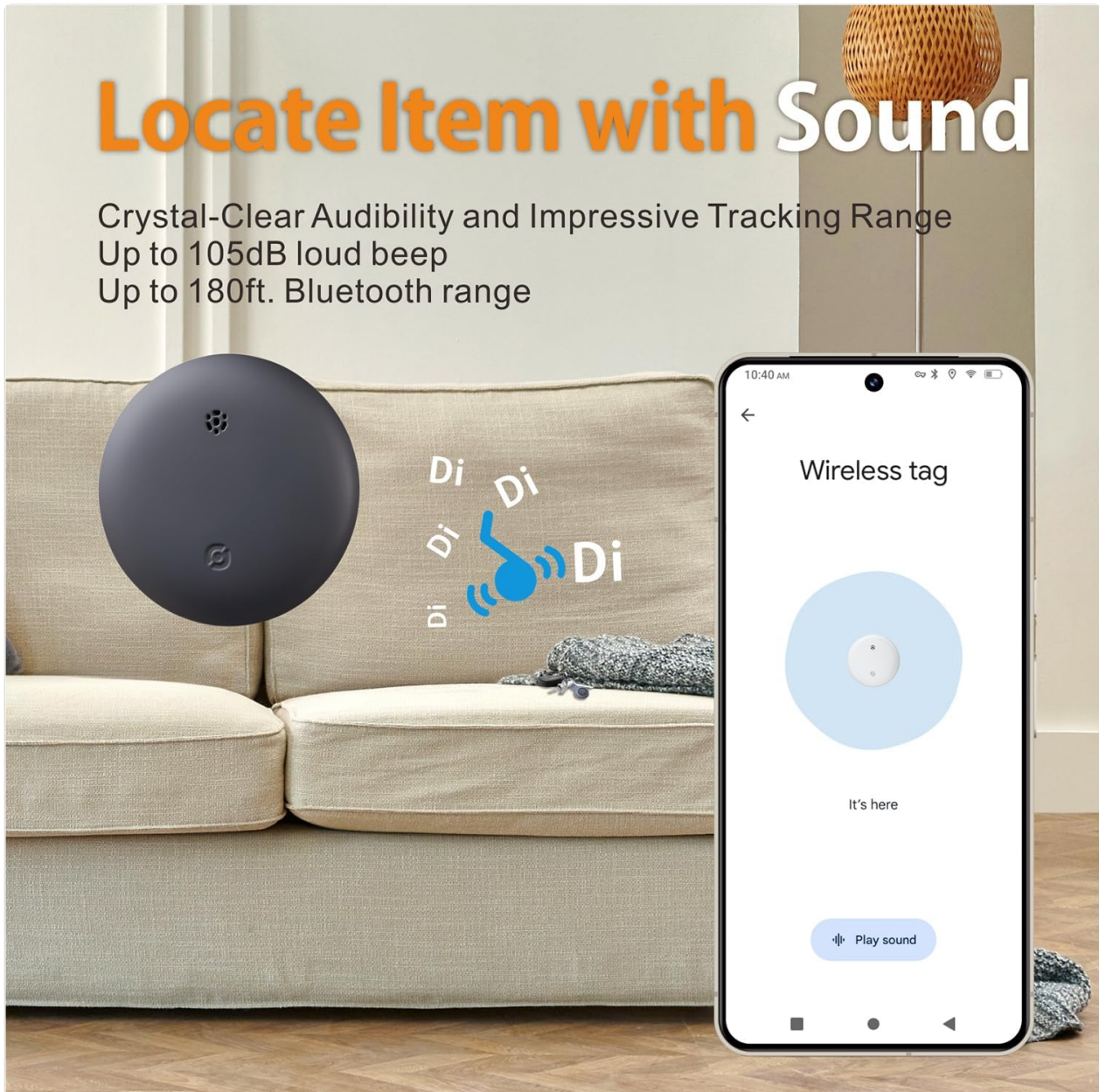


Image: An Android phone screen showing the "Play sound" option within the Find My Device app, with a Reyke tracker depicted next to a couch, indicating it's emitting a sound.

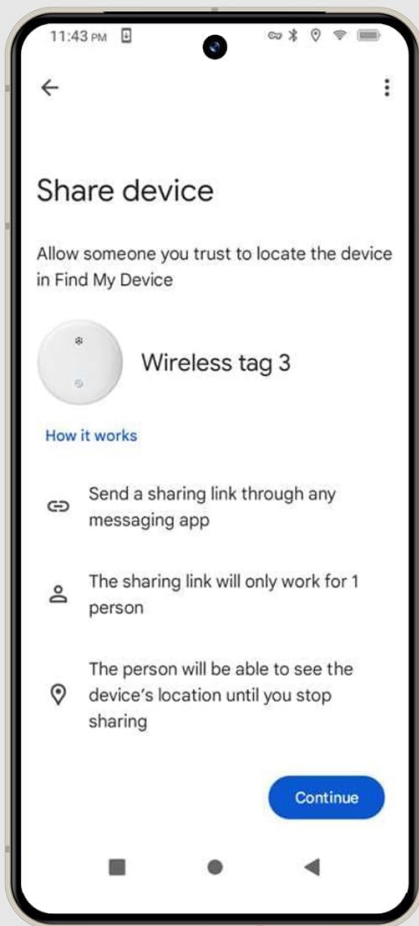
Out-of-Range Alerts

Receive instant notifications on your Android smartphone if an item with a Reyke tracker moves out of Bluetooth range. This feature helps prevent accidental loss by alerting you when you leave an item behind.

Location Sharing

You can share access to your tracker's location with up to 5 other individuals through the Google Find My Device app. This is useful for shared items like family luggage or car keys, allowing others to view the item's location without receiving unnecessary alerts.

Share Device in Google Find My



With Google Find My Device, easily share your Tag with friends and family for seamless tracking and finding. Up to 4 borrowers can be shared in addition to yourself.



Image: An Android phone screen showing the "Share device" option in the Google Find My Device app, with instructions on how to share the tracker's location with others, next to a Reyke tracker attached to a key ring.

Lost Mode

If an item is lost and out of Bluetooth range, activate "Lost Mode" in the Google Find My Device app. The extensive Google Find My network will then assist in locating your item. You will automatically receive a notification once your tracker is detected by another Android device within the network.

Outdoor and Everyday Use

The Reyke Android Tracker is designed for versatile use, suitable for attaching to keys, luggage, wallets, bicycles, and backpacks. Its robust design ensures it can withstand various environments.



Image: A collage of images showing the Reyke Android Tracker attached to various items such as keys, luggage, a wallet, a bicycle, and a backpack, demonstrating its versatility.

MAINTENANCE

Battery Replacement

The Reyke Android Tracker uses a replaceable Lithium metal battery. When the battery level is low, the Google Find My Device app will indicate this. To replace the battery, carefully open the tracker casing, remove the old battery, and insert a new one, ensuring correct polarity. Close the casing securely.

Water and Dust Resistance (IP66)

The tracker features an IP66 rating, meaning it is resistant to strong splashes and water jets. This makes it suitable for outdoor use and can withstand rain, splashes, and brief immersion. However, it is not designed for prolonged submersion in water.

IP66 Waterproof

Stay protected in any weather.
Ideal for outdoor adventures, rain or shine.

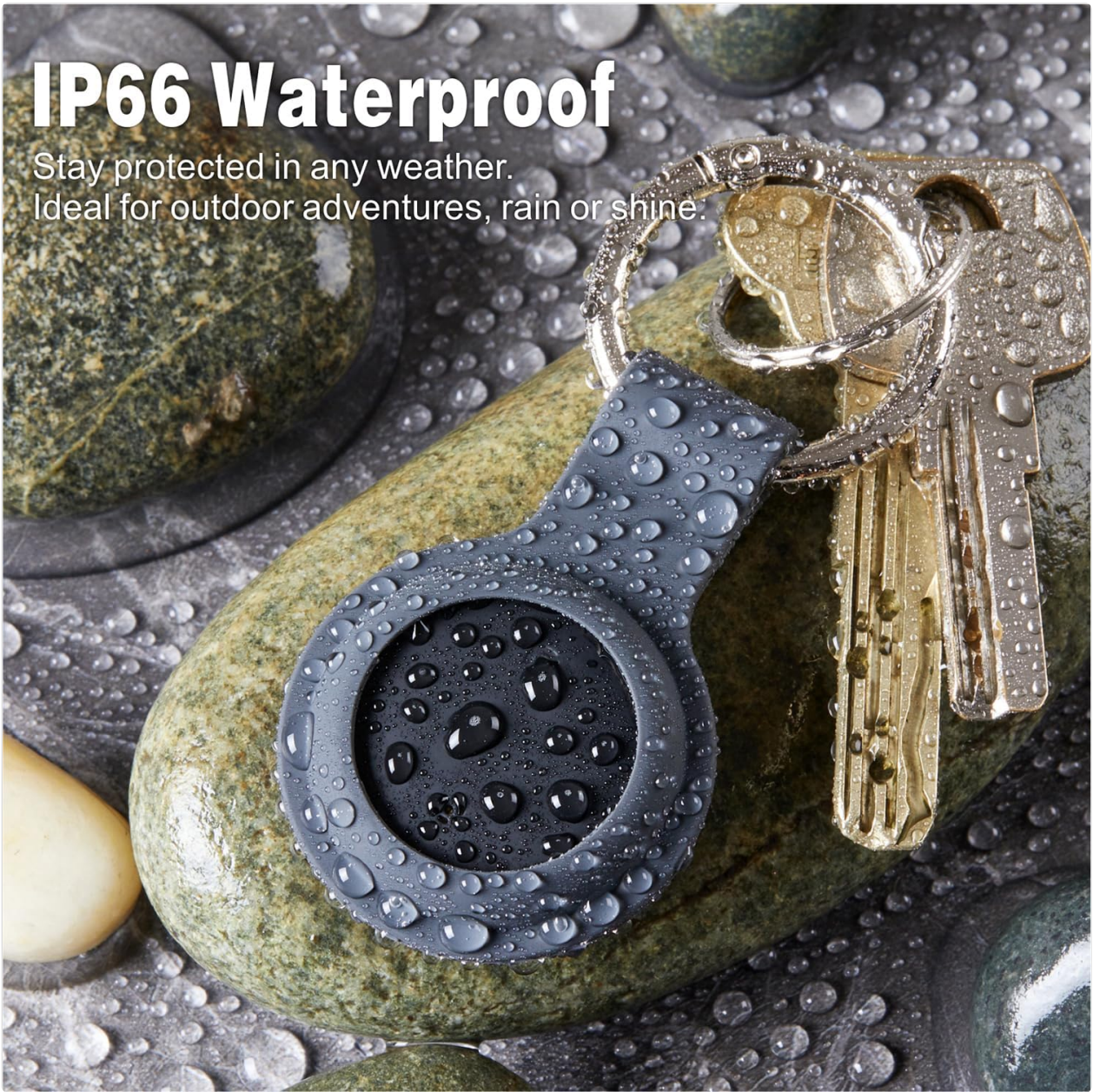


Image: A Reyke Android Tracker, enclosed in a protective silicone case, covered in water droplets, illustrating its IP66 waterproof capability, next to a set of keys.

Cleaning

To clean your tracker, wipe it with a soft, damp cloth. Avoid using harsh chemicals or abrasive materials, as these may damage the device.

TROUBLESHOOTING

• Tracker Not Connecting:

- Ensure Bluetooth and mobile data are active on your Android device.
- Verify that the Google Find My Device app is updated to the latest version.
- Restart your Android device and try the setup process again.
- Check the tracker's battery level in the app; replace if low.
- If Fast Pair doesn't work, attempt the Manual Setup process described above.

• Inaccurate Location:

- The tracker's location accuracy depends on the density of Android devices in the vicinity. In less

populated areas, location updates may be less precise.

- Ensure your phone's location services are enabled and set to high accuracy.

- **Sound Not Loud Enough:**

- The sound feature is primarily designed for locating items indoors or in quiet environments. Its effectiveness may be reduced in noisy outdoor settings.

- **Battery Drains Quickly:**

- Ensure you are using a fresh, high-quality Lithium metal battery.
- Frequent use of the "Play sound" feature can consume more battery.

SPECIFICATIONS

Feature	Detail
Brand	Reyke
Model	B0FR4XTSDL
Compatibility	Google Find My Device (Android Only), Smartphone, Tablet
Connectivity	Bluetooth (Up to 50m / 160ft range)
Sound Level	90-105dB
Water Resistance	IP66 (Resistant to strong splashes and water jets)
Battery Type	Lithium metal (4 included in 4-pack)
Dimensions	Approximately 32mm (1.26in) diameter, 7.9mm (0.31in) thickness
GTIN / UPC	725414507883



Image: A diagram illustrating the dimensions of the Reyke Android Tracker (32mm diameter, 7.9mm thickness) and highlighting key features like 90-105dB loud sound, up to 160ft/50m Bluetooth range, IPX6 waterproof rating, and replaceable battery.

WARRANTY INFORMATION

Reyke products are designed for reliability and performance. For specific warranty details, including coverage period and terms, please refer to the warranty card included with your product packaging or visit the official Reyke website. Keep your proof of purchase for any warranty claims.

CUSTOMER SUPPORT

If you encounter any issues or have questions regarding your Reyke Android Tracker that are not addressed in this manual, please contact our customer support team. Contact information can typically be found on the product packaging or on the official Reyke website. Please have your product model number (B0FR4XTSDL) and purchase details ready when contacting support.

