



Manuals.plus /

› Pastigio /

› Pastigio Fixed Monitor Wall Mount Instruction Manual for Frame156, M15R2, Frame157

Pastigio Frame156

Pastigio Fixed Monitor Wall Mount Instruction Manual

Model: Frame156, M15R2, Frame157

1. PRODUCT OVERVIEW

The Pastigio Fixed Monitor Wall Mount is designed to securely hold 14-24 inch televisions, digital picture frames, and monitors. Its ultra-slim, fixed design positions your display just 12mm from the wall, offering a clean and space-saving solution. This mount supports VESA patterns of 75x75mm and 100x100mm and has a maximum load capacity of 30 lbs (15 kg).

Key Features:

- **Space-Saving Design:** Ideal for RVs, campers, and small spaces, fitting 14-24 inch displays.
- **Heavy-Duty Support:** Safely supports devices up to 30 lbs (15 kg).
- **Easy & Secure Installation:** Features pre-installed screws and supports common VESA patterns.
- **Ultra-Slim Profile:** Mounts displays just 12mm from the wall for a sleek appearance.
- **Custom Comfort:** Allows mounting at an ideal height for comfortable, strain-free viewing.

2. SAFETY INFORMATION

WARNING: Read and understand all instructions before installation. Failure to do so may result in serious personal injury, property damage, or voiding of warranty.

- Ensure the mounting surface can safely support the combined weight of the mount and your display.
- Always use a stud finder to locate wood studs or ensure you are drilling into solid concrete/brick.
- Do not exceed the maximum load capacity of 30 lbs (15 kg).
- Use appropriate safety gear, including eye protection, during installation.
- If you are unsure about any part of the installation process, consult a qualified professional.

3. PACKAGE CONTENTS

Verify that all components are present and undamaged before beginning installation.

- 1 x Fixed-position wall bracket
- 1 x Complete mounting hardware set (screws, anchors, washers)
- 1 x Instruction Manual

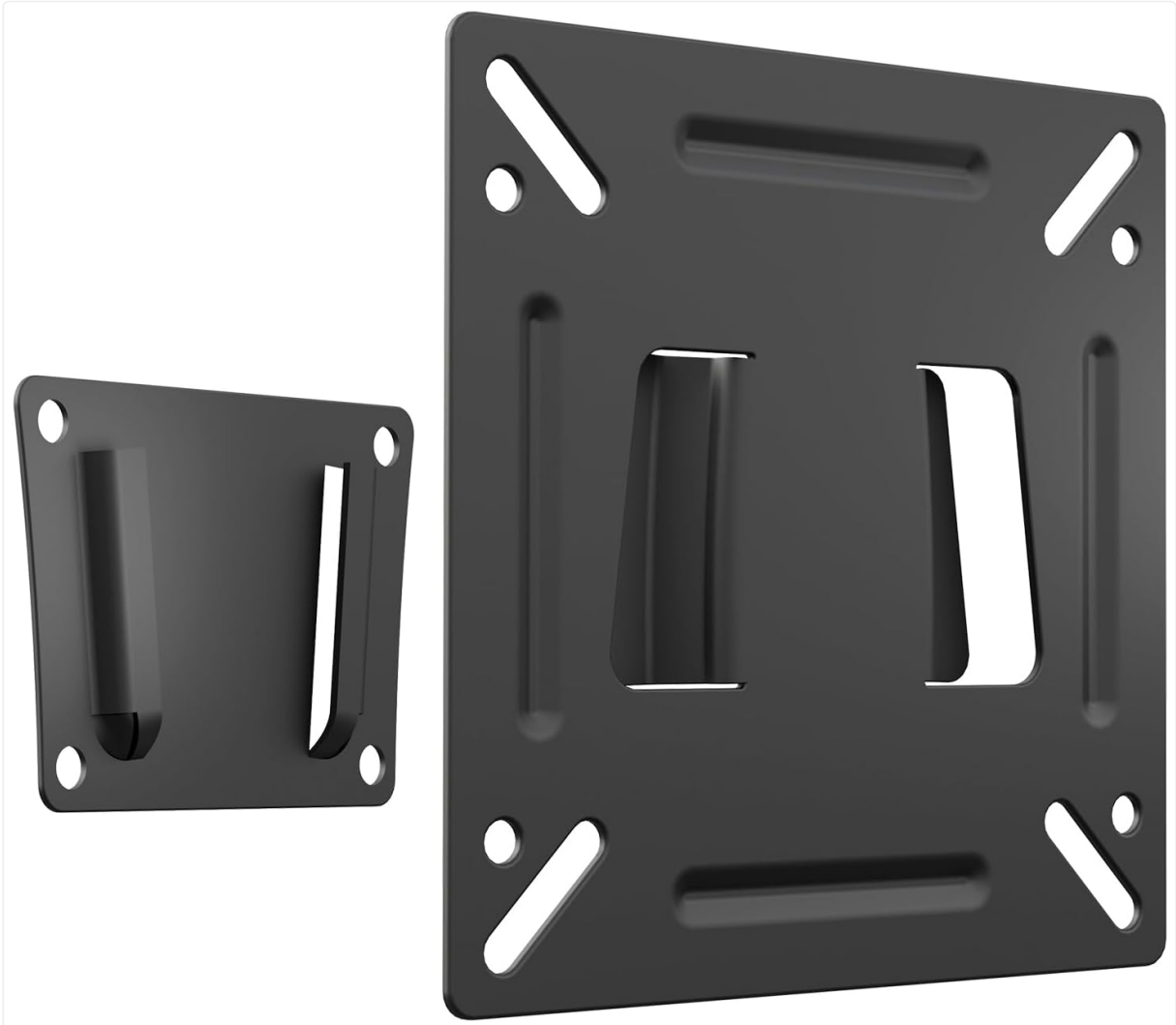


Image 1: Overview of the Pastigio Fixed Monitor Wall Mount components, including the wall plate and monitor plate.

4. SPECIFICATIONS

TV Fit Size	14-24 inches
Weight Capacity	15 kg (30 lbs)
VESA Compatible	75x75mm, 100x100mm
Distance to Wall	12mm
Movement Type	Fixed
Material	Metal
Color	Black

Product Details

TV Fit Size	14-24 inch	Swivel Left & Right	0°
Weight Capacity	15kg(30lbs)	Tilt Up & Down	0°
VESA Compatible	75*75~100*100mm	Distance to Wall	12mm

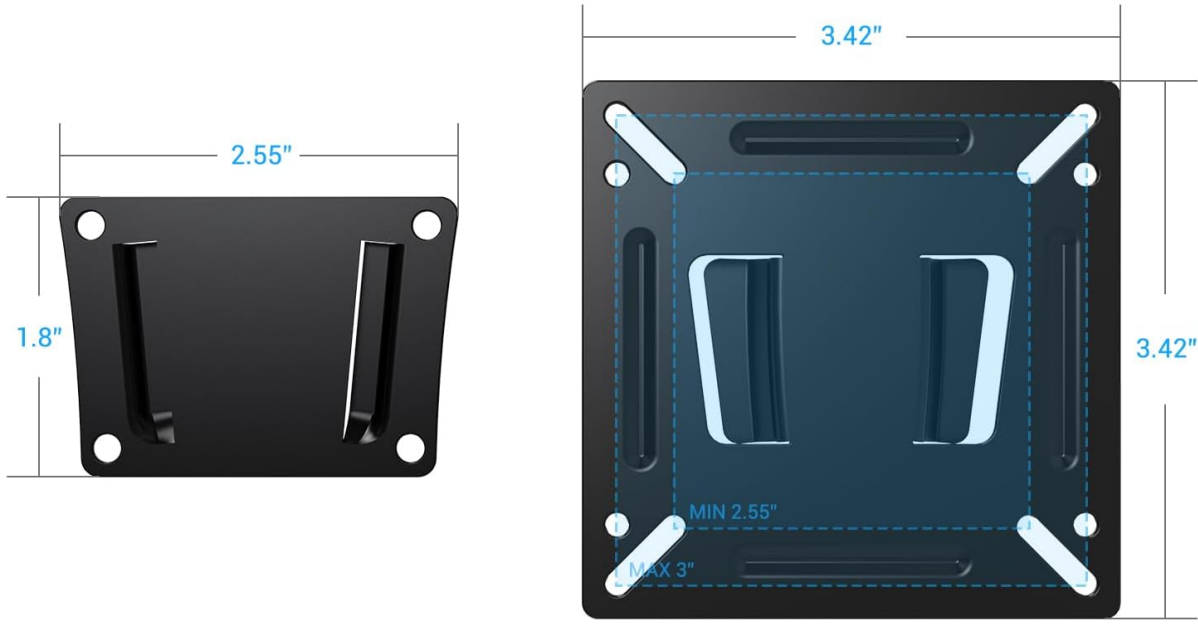


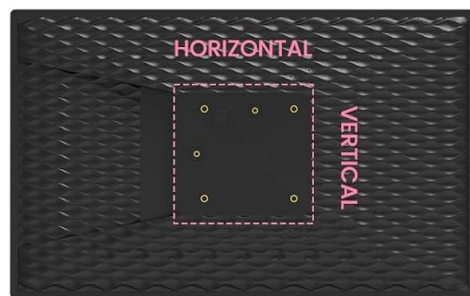
Image 2: Detailed product specifications and dimensions for the Pastigio Fixed Monitor Wall Mount.

Complete Accessories

Easy to Installation



COMPATIBLE
VESA RANGE
75x75mm
80x80mm
100x100mm



Stable and compatible with your Monitor

Image 3: Illustration of compatible VESA mounting patterns (75x75mm, 80x80mm, 100x100mm) for the mount.

5. SETUP AND INSTALLATION

This section provides a step-by-step guide for installing your Pastigio Fixed Monitor Wall Mount. For optimal stability, it is recommended to mount directly to concrete or solid brick surfaces. If mounting to wood studs, ensure proper stud location.

5.1. Prepare the Wall Plate

1. **Locate Mounting Position:** Determine the desired height and position for your display. Use a stud finder to locate a wood stud if not mounting to concrete/brick.
2. **Mark Pilot Holes:** Hold the wall plate against the wall at the desired location. Use a pencil to mark the positions for the mounting holes. Ensure the plate is level.
3. **Drill Pilot Holes:** Drill pilot holes at the marked positions. The size of the drill bit will depend on your wall type and the provided hardware (refer to the hardware kit for specific drill bit sizes).
4. **Attach Wall Plate:** Secure the wall plate to the wall using the provided screws and anchors (if applicable for your wall type). Ensure it is firmly attached and level.

5.2. Attach Mount to Display

1. **Identify VESA Pattern:** Locate the VESA mounting holes on the back of your monitor or digital picture frame.
2. **Attach Monitor Plate:** Align the monitor plate with the VESA holes on your display. Use the appropriate screws from the hardware kit to securely attach the plate to the back of your display. Do not overtighten.

Simple Installation

Well connected with your Monitor/TV

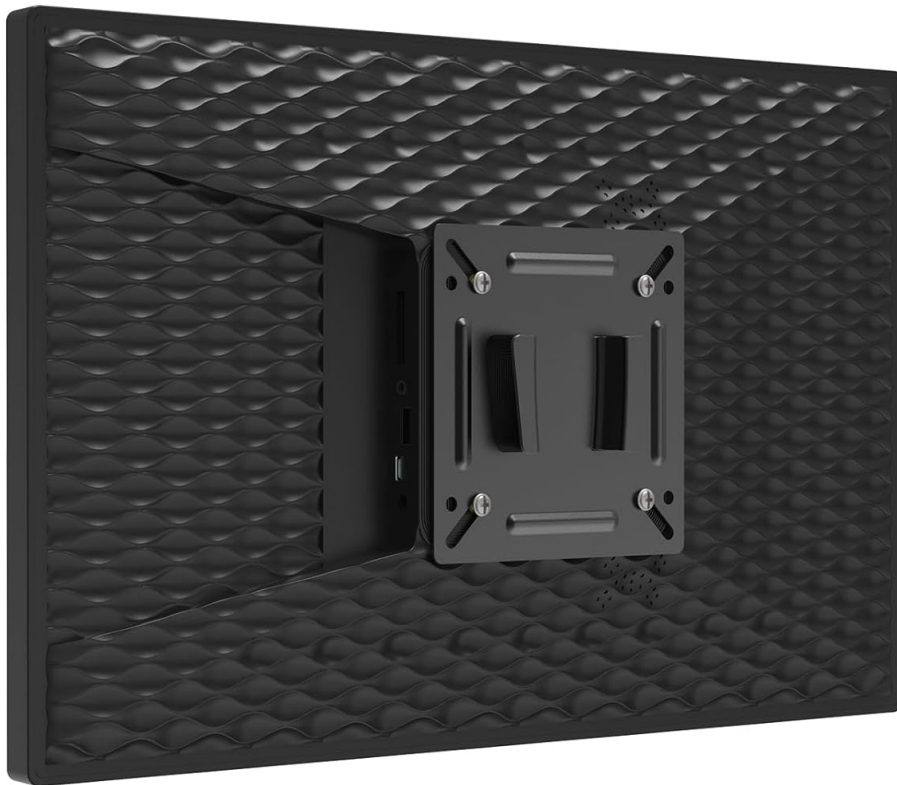


Image 4: The monitor plate attached to the back of a monitor, showing the VESA screw points.

Simple Installation

Well connected with your Monitor/TV



Image 5: The monitor plate attached to the back of a digital picture frame, demonstrating compatibility.

5.3. Mount the Display to the Wall

1. **Hang the Display:** Carefully lift your display with the attached monitor plate. Align the monitor plate with the wall plate and slide it into place, ensuring it hooks securely onto the wall plate.
2. **Secure the Display:** Once the display is hanging, locate any safety screws or locking mechanisms on the mount. Tighten these to prevent accidental dislodging of the display.

Your browser does not support the video tag.

Video 1: A general installation guide for a fixed monitor wall mount, demonstrating the process of attaching the mount to the monitor and then to the wall.

Your browser does not support the video tag.

Video 2: Features and installation overview of a low-profile fixed TV mount, showing how it sits close to the wall.

Your browser does not support the video tag.

Video 3: Installation demonstration of a small TV wall mount, highlighting the ease of setup for various display sizes.

6. OPERATING THE MOUNT

The Pastigio Fixed Monitor Wall Mount is designed for a stationary display position. Once installed, your monitor or digital picture frame will remain in a fixed, low-profile position against the wall. There are no

adjustable movements such as tilt, swivel, or rotation with this specific model.

7. MAINTENANCE

- **Regular Inspection:** Periodically check all screws and connections to ensure they remain tight and secure.
- **Cleaning:** Clean the mount with a soft, dry cloth. Avoid using abrasive cleaners or solvents that could damage the finish.
- **Damage Check:** If any part of the mount appears damaged or worn, discontinue use and contact customer support for assistance.

8. TROUBLESHOOTING

8.1. Display is not level

- Ensure the wall plate was installed perfectly level. If not, you may need to adjust the wall plate's position.
- Check if the monitor plate is securely attached to the display and not crooked.

8.2. Mount feels unstable

- Verify that all mounting screws are fully tightened.
- Confirm that the wall plate is securely fastened to a solid surface (wood stud, concrete, or brick).
- Ensure the display's weight does not exceed the 30 lbs (15 kg) maximum capacity.

8.3. Missing parts or damaged components

- Refer to the 'Package Contents' section to confirm all items were received.
- Contact customer support immediately for replacement parts or assistance.

9. WARRANTY AND SUPPORT

For any questions regarding installation, product issues, or support, please contact our customer service team. We are committed to providing assistance and ensuring your satisfaction.

Please refer to the contact information provided on the customer service card included in your package or visit the official Pastigio store on Amazon for further details.