

VSYSTO F4.5K

VSYSTO Bicycle Rear View Camera F4.5K Instruction Manual

Your comprehensive guide to setting up and operating your VSYSTO F4.5K Bicycle Rear View Camera.

1. INTRODUCTION

The VSYSTO F4.5K Bicycle Rear View Camera is designed to enhance cycling safety and convenience. This system features a 4.5-inch screen, 1080P infrared night vision, WiFi connectivity, and GPS functionality. This manual provides detailed instructions for installation, operation, and maintenance to ensure optimal performance and user satisfaction.

2. WHAT'S IN THE BOX

Carefully unpack all components and ensure everything listed below is present:

- Host with bracket
- Camera
- Power cable
- GPS module
- Wired controller
- Tail light with 2 meters/6.56ft extension cable
- Light shield
- USB Test cable + cable ties + TF plug screw
- Camera bracket

- Host bracket
- Wired controller bracket
- Taillight bracket



Image: All components included in the VSYSTO F4.5K Bicycle Rear View Camera package.

3. SETUP AND INSTALLATION

Follow these steps to correctly install your VSYSTO F4.5K system on your bicycle.

3.1 Camera Installation

The camera can be mounted on the seat post or rear rack. Use the provided brackets and screws for a secure fit. Ensure the camera lens has a clear view of the rear.

One-click Power on/off

Simple operation, long press function button switch machine



Smart Automatic Power on/off

Intelligent monitoring vibration switch machine, free your hands. No need to stop to manually turn the recorder on and off, making your journey safer and easier



Image: Rear camera mounted on the bicycle seat post.

3.2 Monitor Installation

Mount the 4.5-inch display unit on your handlebar using the handlebar bracket. Adjust the angle for optimal viewing during your ride. Connect the camera and GPS modules to the main unit using the provided cables.

WiFi Connection

Preview, edit and download recorded videos in real time on the mobile APP "WiFi camera" without pulling out the memory card



GPS Tracker

Satellite precise positioning, automatic generation of driving speed and track, all data can be viewed on mobile APP and computer



Image: Display unit mounted on the bicycle handlebar.

3.3 Wiring Connection

Route the cables neatly along the bicycle frame using the provided cable ties. Ensure all waterproof plugs are securely connected. Avoid routing cables near moving parts or areas that could cause pinching or damage.



Image: Connection diagram for the VSYSTO F4.5K components.

3.4 Installation Reference Video

For a visual guide on the installation process, please refer to the official video below:

Your browser does not support the video tag.

Video: A detailed guide demonstrating the installation of the VSYSTO F4.5K Bicycle Rear View Camera system.

4. OPERATING INSTRUCTIONS

4.1 Power On/Off

The device supports intelligent vibration startup. If no vibration is detected within 5 minutes, it will automatically shut down. To manually power on/off, long press the function button on the wired controller.

Smart controls, easy to use

Vibration detection induction, automatic power on/off



Image: One-click and intelligent automatic power on/off functionality.

4.2 Wired Controller Functions

The wired controller provides quick access to various functions:

- **Up Key:** Turn on/off microphone.
- **Down Key:** Enter assisted driving mode, switch between different display interfaces.
- **OK Key:** Enter menu to set functions, pause recording.
- **Function Key:** Enter emergency recording mode, power on/off the camera.



Image: Multifunctional wired controller with button descriptions.

4.3 WiFi Connection and App Operation

Connect your smartphone to the camera's built-in WiFi to view, transfer, and edit videos via the "WiFi camera" app. The app allows real-time preview and easy sharing without removing the memory card.

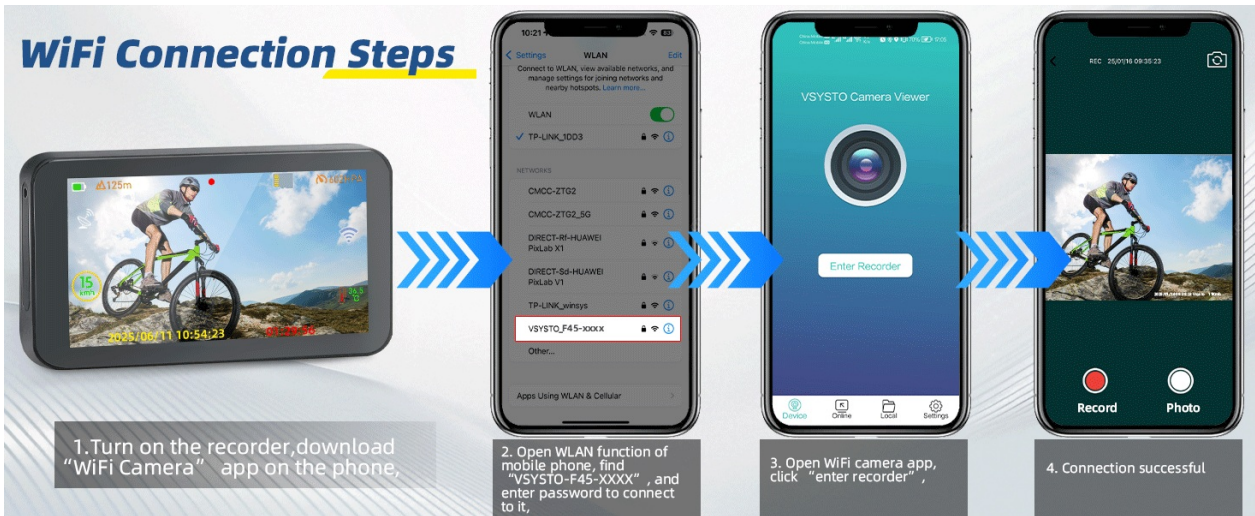


Image: WiFi connection and app operation for the VSYSTO F4.5K.

4.3.1 Android App Operation

Your browser does not support the video tag.

Video: Demonstration of the VSYSTO F4.5K app operation on an Android device.

4.3.2 iOS App Operation

Your browser does not support the video tag.

Video: Demonstration of the VSYSTO F4.5K app operation on an iOS device.

4.4 GPS Functionality

The built-in GPS module allows riders to track their driving route, speed, and other data. This information can be viewed on the mobile app or computer software ("DV Player").

HD 1080P Bicycle Rear View Camera

Record 1080P high-definition video, 140° wide angle can cover most lanes and reduce blind areas

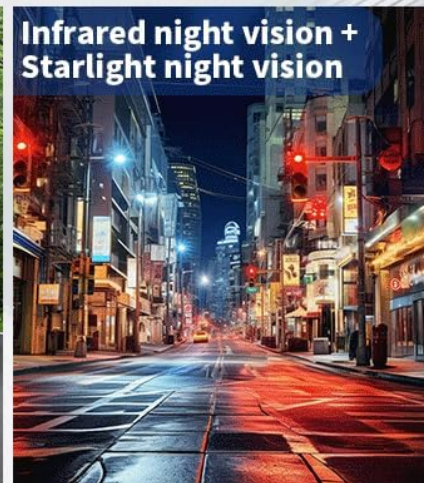
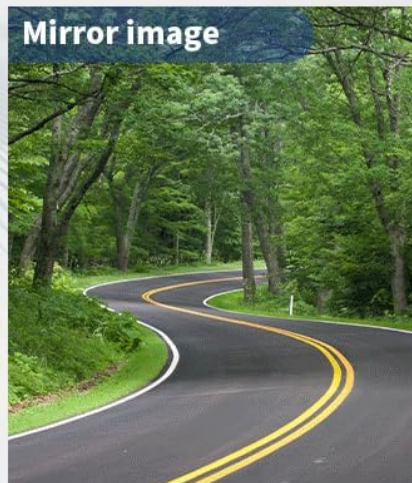


Image: GPS tracking feature displaying route and speed on mobile and computer.

4.5 Assisted Driving Mode

Access the assisted display mode via the wired controller's down button to view real-time data such as current vehicle speed, time, calorie consumption, mileage, altitude, longitude, latitude, and atmospheric pressure. It also tracks short-term and long-term memory driving speed and mileage.

Calories Display

Calculate calories burned for the rider, show speed, mileage and time



Long-term and Short-term Memory

Post-ride display of cumulative and session mileage helps monitor fitness journey and individual cycling performance



Image: Assisted Driving Mode displaying various metrics.

4.5.1 Assisted Driving Operation Video

Your browser does not support the video tag.

Video: Demonstration of the assisted driving mode features on the VSYSTO F4.5K.

5. FEATURES

5.1 HD 1080P Infrared Night Vision Camera

The camera system captures clear, high-resolution footage with a 140-degree wide-angle lens. Specialized night vision technologies (starlight night vision + infrared night vision) ensure visibility in low-light conditions, covering multiple lanes and reducing blind spots.



Image: Infrared Night Vision Camera performance.

5.2 Colorful Spectral Taillight

The integrated taillight offers six different light modes, enhancing visibility and safety for other road users, especially in low-light conditions. The wired controller allows you to freely choose lighting modes and turn the taillights on/off.



Image: Colorful Spectral Taillight with multiple modes.

5.3 Loop and Emergency Recording

The system supports loop recording (1/2/3/5 minute intervals), automatically overwriting older files when the memory card is full. A built-in G-sensor triggers emergency recording upon impact, saving critical video files that will not be overwritten. Up to 10 emergency files can be saved.

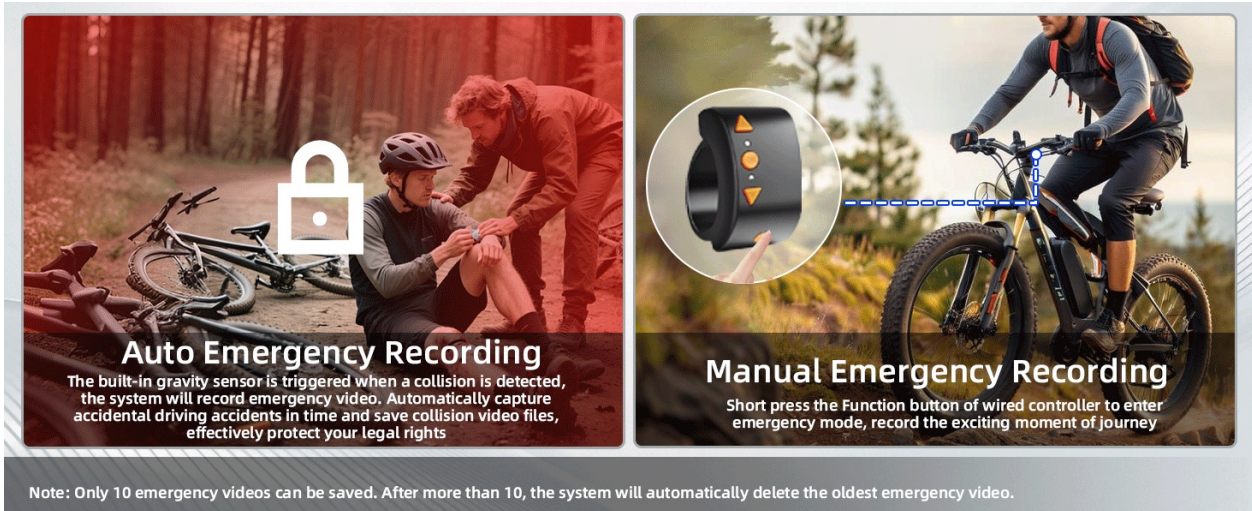


Image: Loop and Emergency Recording features.

5.4 Waterproof Design

The camera system features a fully waterproof construction, ensuring reliable operation in all weather conditions.



Image: Waterproof design for all-weather reliability.

5.5 Convenient Charging

The device is powered by a rechargeable 3000mAh battery, offering up to 3 hours of continuous use. It supports recording while charging and can be connected to a 5V 2A power bank or charger via USB. (Note: Input voltage exceeding 5V may damage the recorder).

Large Capacity Battery

USB port charging via power bank/charger, support recording while charging

3000mAh

Rechargeable battery



Charger



Power bank



3.3H

The main unit can continue to record when fully charged

Tips: It takes about 3 hours to fully charge without recording. If the output voltage exceeds 5V, it may damage the recorder.

Image: Rechargeable battery and convenient USB charging.

6. MAINTENANCE

- Regularly check all cable connections for security and damage.
- Clean the camera lens and display screen with a soft, damp cloth to ensure clear visibility.
- Periodically format the SD card to maintain optimal recording performance and prevent data corruption.
- Ensure the device is fully charged before long rides.
- Store the device in a cool, dry place when not in use.

7. TROUBLESHOOTING

7.1 No Power

- Check if the battery is charged.
- Ensure all power cables are securely connected.
- Verify the power source (power bank/charger) is functioning correctly.

7.2 Poor Image Quality

- Clean the camera lens and display screen.
- Check for any obstructions blocking the camera's view.
- Ensure the camera is securely mounted and not vibrating excessively.

7.3 WiFi Connection Issues

- Ensure the camera's WiFi is enabled.
- Verify you are connecting to the correct VSYSTO WiFi network.
- Restart both the camera and your smartphone, then try connecting again.

7.4 Recording Problems

- Check if an SD card is inserted and properly formatted.
- Ensure the SD card has sufficient free space.
- If using loop recording, older files will be overwritten; check for emergency files if needed.

8. SPECIFICATIONS

Feature	Specification
Brand	VSYSTO
Model Name	F4.5K
Screen Size	4.5 Inches
Display Type	IPS
Video Capture Resolution	1080p
Field Of View	140 Degrees
Connectivity Technology	Wi-Fi

Special Features	GPS, Handlebar Wired Controller, Auto power on/off, HD 1080P Infrared Night Vision Camera, Loop recording, Emergency recording, Waterproof, Rechargeable, Overspeed warning, Assisted Driving Mode, Shutdown reminder
Battery Capacity	3000mAh
Battery Cell Type	Lithium Polymer
Flash Memory Type	microSD (up to 256 GB)
Waterproof	Yes
Item Dimensions (D x W x H)	0.78"D x 4.72"W x 3.15"H

9. WARRANTY AND SUPPORT

This VSYSTO product comes with a **1-year warranty** from the date of purchase. For technical support, troubleshooting assistance, or warranty claims, please contact VSYSTO customer service through the official channels provided in your product packaging or on the VSYSTO website.