

Manuals.plus /

› APUS /

› APUS AP-AWH-Q13NG Natural Gas Tankless Water Heater Instruction Manual

APUS AP-AWH-Q13NG

APUS AP-AWH-Q13NG Natural Gas Tankless Water Heater Instruction Manual

Model: AP-AWH-Q13NG | Brand: APUS

1. PRODUCT OVERVIEW

The APUS AP-AWH-Q13NG is an indoor tankless natural gas water heater designed for efficient and on-demand hot water supply. It features a powerful 95,000 BTU heating capacity and a high flow rate of up to 4.42 GPM, capable of meeting simultaneous hot water demands for multiple fixtures.

- **Powerful & High-Capacity:** Delivers 95,000 BTU with 4.42 GPM flow rate, and innovative 0.66 GPM low-flow start technology.
- **Precise & Steady:** High-precision sensors and smart CPU technology maintain water temperature within $\pm 1^{\circ}\text{F}$ (adjustable from 95°F - 140°F).
- **Efficient & Durable:** Oxygen-free copper heat exchangers and segmented combustion technology achieve 85%+ thermal efficiency, offering 30% greater energy savings.
- **Compact & Space-Saving:** Sleek dimensions (20.55"H \times 13.27"W \times 5.91"D) with an intuitive LED touchscreen. Operates at a quiet 36dB.



Image: APUS Tankless Water Heater with key performance metrics: 95,000 BTU, 4.42 GPM maximum flow, and 0.66 GPM

minimum start-up flow.



Image: Diagram illustrating how the APUS tankless water heater can supply hot water to multiple points (kitchen, bathroom, shower) simultaneously.

POWERFUL CORE COMPONENTS

Built to Deliver Fast, Reliable Hot Water Every Time

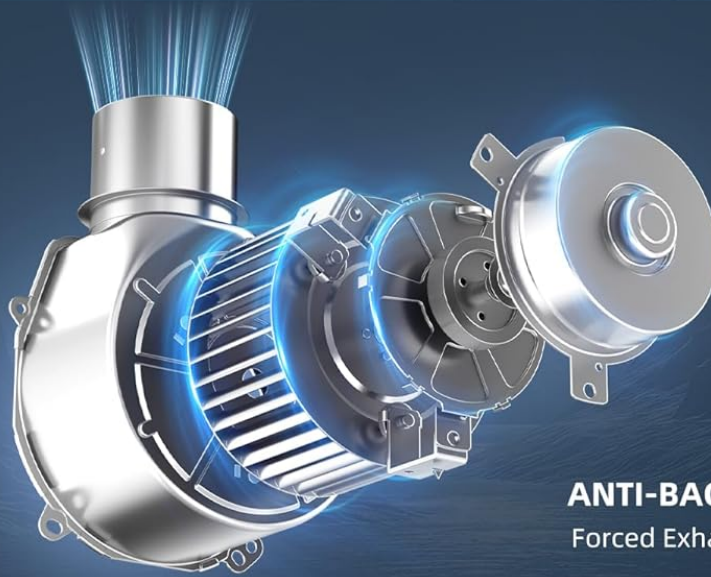
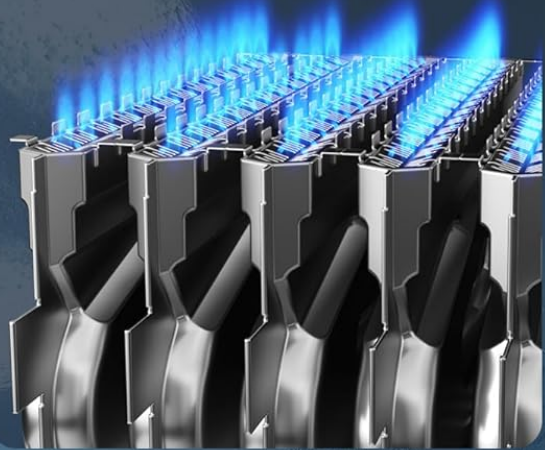
OXYGEN-FREE COPPER CORE

Fast Heating for
Everyday Convenience



3-STAGE BURNER SYSTEM

Stays Consistent Even
as Water Flow Changes



ANTI-BACKFLOW FAN

Forced Exhaust for Safe Indoor Use

Image: Detailed view of the internal components, including the oxygen-free copper core for fast heating and the 3-stage burner system for consistent performance.

2. PACKAGE CONTENTS

Upon unboxing, please verify that all items listed below are present and in good condition:

- Tankless Water Heater x1
- Vent Pipe x1
- Manual Instruction x1

- Installation Card x1
- Assembly Kit x1 (includes mounting screws, anchors, etc.)

HEATS UP FAST

Unleashing Intense Heat and Relentless Water Power



The image features a sleek, silver APUS tankless water heater unit. The unit is rectangular with a digital display at the bottom showing '108°F' and control buttons for power, up, and down. The background is a dark, atmospheric scene with a large, glowing orb (like a moon or planet) and a body of water reflecting the light. The APUS logo is visible in the top left corner of the image area.

95000 BTU
Instant Hot Water Delivery

4.42 GPM
Maximum Flow Rate for Waterfall Shower

0.66 GPM
Minimum Start-up, Worry-Free Hot Water

Image: The APUS Tankless Water Heater unit shown alongside its included vent pipe.

TECHNICAL SPECIFICATIONS

APUS 95000BTU water heater tech specs

Heating Capacity	95000 BTU	Power Supply	AC 110-120V, 60Hz	Memory Function	Supported
Rated Gas Pressure	7" W.C	Power Type	Natural Gas	Exhaust Pipe Diameter	Ø 60 mm
Maximum Flow Rate	4.42 GPM	Minimum Activation Flow	0.66 GPM	Minimum Continuous Flow	0.53 GPM
Gas Inlet Connection	NPT 1/2"	Water Inlet Connection	NPT 1/2"	Water Outlet Connection	NPT 1/2"

Image: A visual packing list detailing the water heater, user's manual, expanded screws, rubber, mounting screws, self-tapping screws, and flue pipe.

Your browser does not support the video tag.

Video: An official APUS video demonstrating the unboxing and installation process for the 95,000 BTU water heater.

3. SAFETY INFORMATION

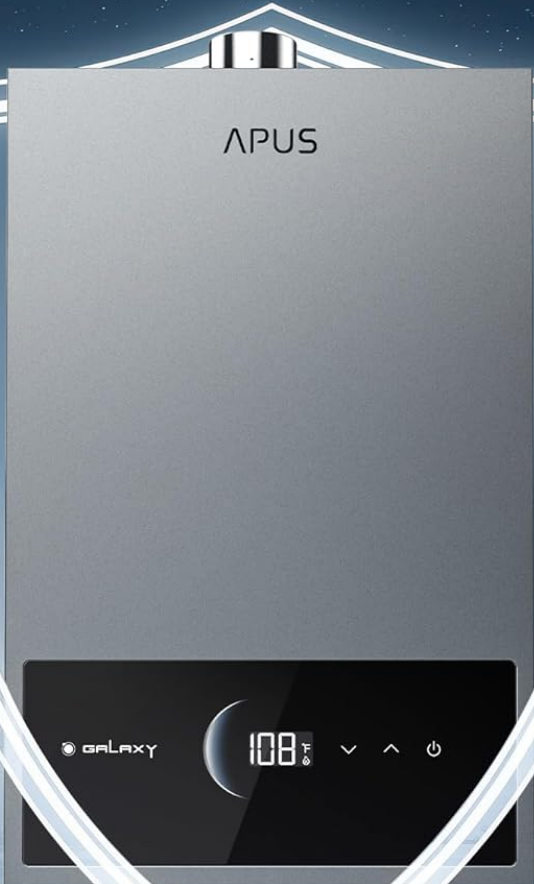
Your APUS Tankless Water Heater is equipped with multiple-layer safety protection features to ensure safe operation:

- **Intelligent Freeze Protection:** Automatically activates in low temperatures.
- **Dry Combustion Protection:** Prevents burning when no water is flowing.
- **Flame Failure Protection:** Automatically shuts down if flame is not detected.
- **Overheat Protection:** Prevents the unit from exceeding safe operating temperatures.
- **Flue Blockage Safety Device:** Detects and prevents issues from blocked exhaust.
- **Backdraft Protection:** Prevents exhaust gases from re-entering the home.

Always ensure proper ventilation and follow all local codes and regulations during installation and operation.

ALL-ROUND SAFETY GUARD

8 Safety Features to Enjoy Hot Water with Confidence



 Flame Failure Protection	 Flue Blockage Protection	 Fan Pressure Protection	 Backdraft Protection
 Auto Shut-Off	 Pressure Relief Protection	 Overheat Protection	 Anti-Freeze Protection

Image: Visual representation of the APUS water heater's comprehensive safety features, including anti-freeze, dry combustion, and flame failure protection.

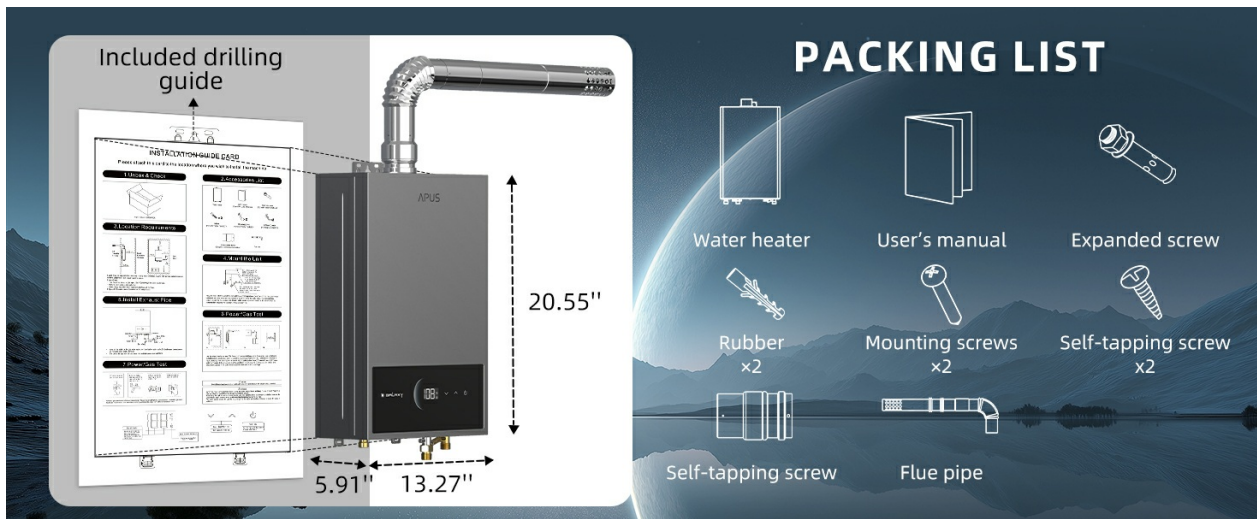


Image: Diagram illustrating the anti-freeze protection system, showing internal heating elements activating in cold conditions to prevent damage.

4. INSTALLATION GUIDE

Proper installation is crucial for the safe and efficient operation of your tankless water heater. Refer to the included Installation Guide Card for detailed steps and diagrams.

Location Requirements:

- Install the unit indoors in a well-ventilated area.
- Ensure adequate clearance from combustible materials.
- Mount on a sturdy wall surface, preferably wooden studs or concrete.

Mounting the Unit:

Use the provided installation guide card as a template to mark drilling points for the mounting screws. Secure the unit firmly to the wall using the supplied mounting hardware.

SPACE SAVING & FLEXIBLE INSTALL

Carry-on size, perfect for corners and tight spaces



Image: The water heater mounted on a wall, showing its compact dimensions (20.55"H x 13.27"W x 5.91"D) and clearly labeled water inlet, water outlet, and gas inlet connections.

Connecting Pipes:

- Connect the natural gas supply line to the gas inlet (NPT 1/2").
- Connect the cold water supply line to the water inlet (NPT 1/2").
- Connect the hot water outlet line to the water outlet (NPT 1/2").
- Ensure all connections are tight and leak-free.

Installing Exhaust Pipe:

Attach the provided vent pipe to the exhaust port on top of the unit. Ensure it is securely fastened and vented to the outside according to local building codes.

Your browser does not support the video tag.

Video: An official APUS video demonstrating the installation process, including mounting and connecting pipes for the 95,000 BTU water heater.

5. OPERATING INSTRUCTIONS

The APUS Tankless Water Heater features an intuitive LED touchscreen for easy control and monitoring.

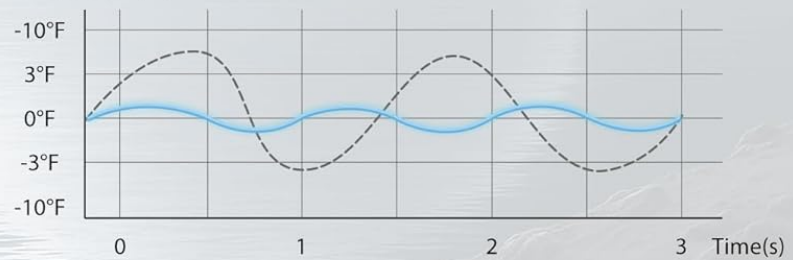
- **Power On/Off:** Use the power button on the touchscreen to turn the unit on or off.
- **Temperature Adjustment:** Adjust the desired water temperature between 95°F and 140°F using the up/down arrows. The unit maintains temperature within $\pm 1^\circ\text{F}$.
- **Memory Function:** The intelligent system remembers your preferred temperature settings.
- **Smart Digital Display:** The LED display shows the current water temperature and operational status.

CONSTANT HOT WATER FLOW

Built-in thermal chip for stable flow and comfort



Temperature(°F)



APUS

Other Products

Image: A woman enjoying a shower, illustrating the constant hot water flow provided by the heater, with a graph showing stable temperature output.



Image: A close-up of the water heater's clear LCD display, showing the temperature setting and control buttons for easy adjustment.

6. MAINTENANCE

Regular maintenance ensures the longevity and optimal performance of your APUS Tankless Water Heater.

- **Freeze Protection:** The unit has built-in intelligent freeze protection. However, if ambient temperatures are consistently below 41°F (5°C) or if the unit will be unused for an extended period, completely drain the water to prevent freezing and cracking of internal components.
- **Regular Checks:** Periodically inspect the unit for any leaks, blockages in the flue pipe, or unusual noises. Consult a qualified technician for any concerns.

7. TROUBLESHOOTING

For common issues and solutions, refer to the troubleshooting section in your user manual. Below are some frequently asked questions:

- **Q: Does this run off of batteries or is it plugged in?**
A: It works with a 120 volt wall plug.
- **Q: What are the exhaust pipe specs/requirements?**
A: Ø2.36" vent pipe and standard 1/2" NPT for water pipe and gas pipe.
- **Q: Are there any installation requirements for this water heater?**
A: It should be installed in a ventilated indoor area.
- **Q: Does it have freeze protection?**
A: The unit is equipped with an automatic heating device. Please make sure the power remains on for the protection to work properly.
- **Q: Why is there some water left in the pipe connections?**
A: We tested the product before shipping, so it is normal and will not affect the product's use.

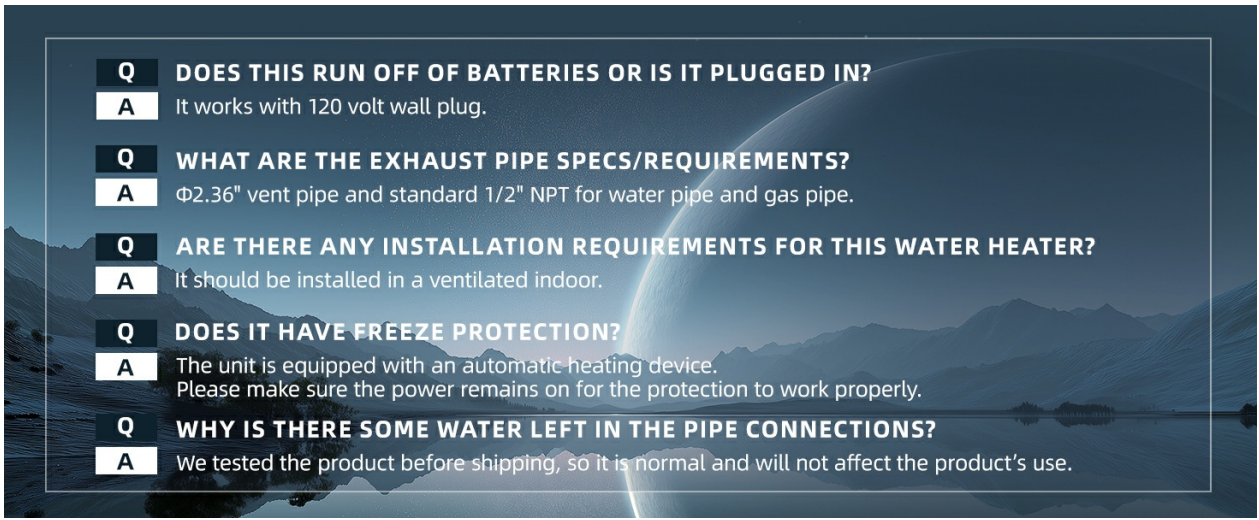


Image: A visual representation of common questions and answers regarding the water heater's operation and installation.

8. TECHNICAL SPECIFICATIONS

Feature	Specification
Heating Capacity	95,000 BTU
Maximum Flow Rate	4.42 GPM
Minimum Activation Flow	0.66 GPM
Gas Type	Natural Gas
Voltage	120 Volts
Maximum Temperature	140°F
Efficiency	85%+ Thermal Efficiency
Product Dimensions	20.55"H x 13.27"W x 5.91"D
Item Weight	19.18 pounds



Image: A detailed table outlining the technical specifications of the APUS 95,000 BTU water heater, including heating capacity,

flow rates, and power details.

9. WARRANTY AND SUPPORT

Your APUS Tankless Water Heater comes with a **2-year coverage** for peace of mind. For any support or warranty claims, please refer to the contact information provided in your user manual or visit the official APUS website.