

Hiseeu PK-8YHB88-BT

Hiseeu 8MP 4K PoE Security Camera System User Manual

Model: PK-8YHB88-BT

1. INTRODUCTION

This manual provides detailed instructions for the installation, operation, and maintenance of your Hiseeu 8MP 4K PoE Security Camera System. This system is designed for comprehensive home and business surveillance, offering high-resolution video, advanced detection capabilities, and flexible recording options. Please read this manual thoroughly before setup and use to ensure proper functionality and safety.

2. WHAT'S IN THE BOX

Verify that all components listed below are included in your package:

- 1x 4K NVR (Network Video Recorder) with 2TB HDD pre-installed
- 8x 4K PoE Cameras (8MP Bullet Cameras)
- 4x 64ft Ethernet Cables
- 4x 100ft Ethernet Cables
- 1x Power Adapter for NVR
- 1x USB Mouse
- 1x HDMI Cable
- 1x 3ft Ethernet Cable
- 1x User Manual
- 1x Warning Sticker
- 1x Screws Bag (for camera mounting)

What's in the Box?

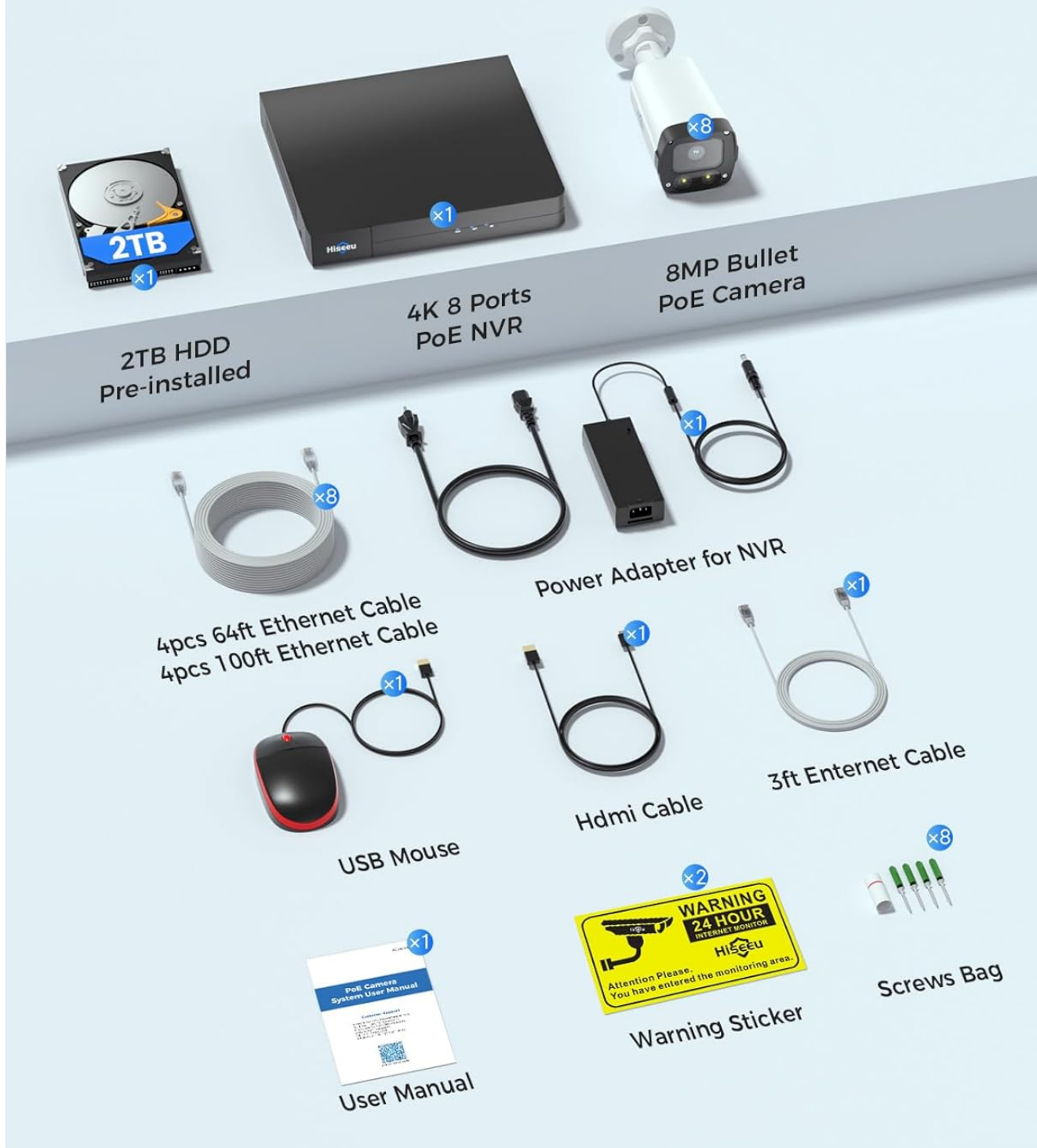


Image: All components included in the Hiseeu 8MP 4K PoE Security Camera System package.

3. KEY FEATURES

- **4K 8MP HD Image:** Delivers vivid and detailed video resolution (3840x2160p), four times clearer than 2MP systems.
- **121° Wide View Angle:** Equipped with a 2.8mm lens, providing a wider field of view compared to standard 3.6mm lenses.
- **AI Human/Vehicle Detection:** Advanced artificial intelligence technology for accurate detection of humans and vehicles, reducing false alarms.

- **Color Night Vision:** Offers three night vision modes: Black-and-White, Color Night Mode, and Alarm Light mode (activates light upon detection).
- **Two-Way Audio:** Enables real-time communication through the camera via the mobile app.
- **24/7 Recording & Smart Playback:** Supports continuous recording and various playback modes including sync, motion detection, and common playback.
- **PoE (Power over Ethernet):** Simplifies installation by providing power and data through a single Ethernet cable.
- **Expandable NVR:** The 8-port NVR can be expanded to 16 channels by adding an external PoE switch.
- **Internet Flexibility:** Functions for local surveillance without internet; remote access via app/PC client requires internet connection.

4. SETUP

4.1 System Overview

The Hiseeu PoE Security Camera System consists of a Network Video Recorder (NVR) and multiple Power over Ethernet (PoE) cameras. The NVR manages video recording, storage, and network connectivity, while the cameras capture high-definition video footage.

4.2 Hardware Connection

Follow these steps to connect your system:

1. **Connect Cameras to NVR:** Use the provided Ethernet cables to connect each PoE camera to the PoE ports on the back of the NVR. A single Ethernet cable provides both power and video signal.
2. **Connect NVR to Monitor:** Connect the NVR to a TV or monitor using the HDMI cable for local viewing.
3. **Connect USB Mouse:** Plug the USB mouse into one of the USB ports on the NVR for navigation.
4. **Connect NVR to Power:** Connect the NVR's power adapter to the NVR and then to a power outlet. The NVR will power on automatically.
5. **(Optional) Connect NVR to Router:** For remote access via the mobile app or PC client software, connect the NVR to your internet router using the 3ft Ethernet cable.

Two Night Vision Modes

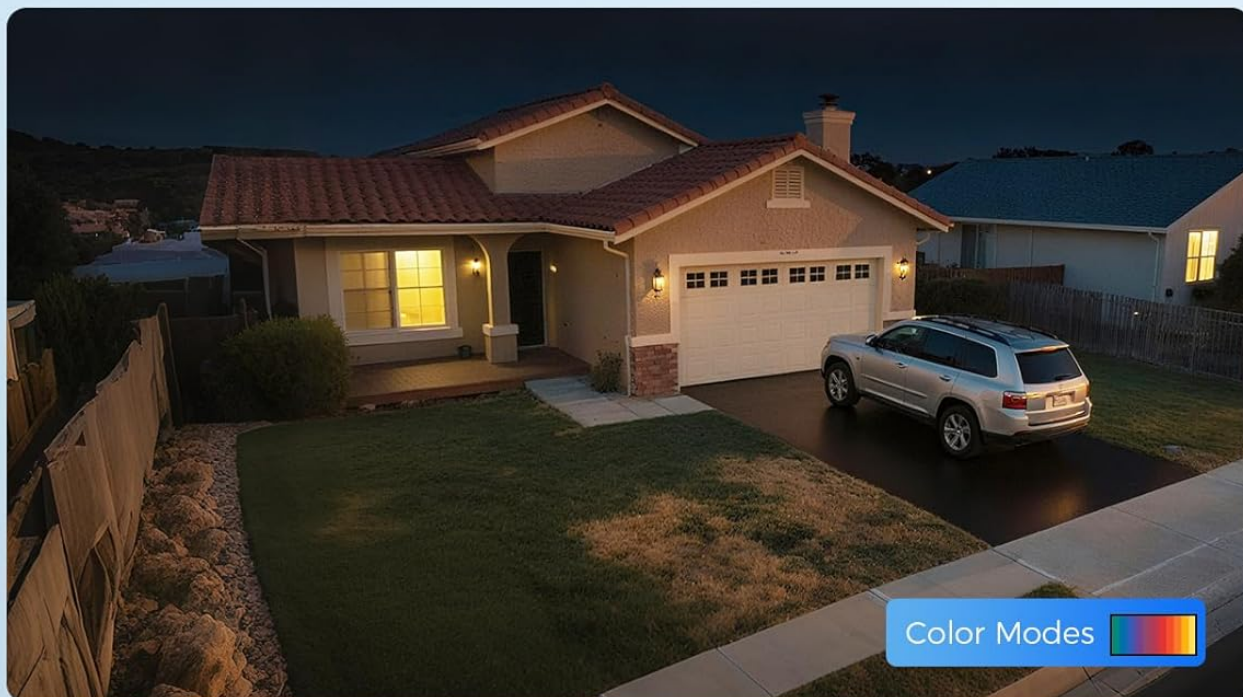


Image: Power over Ethernet setup, showing camera connected to NVR, NVR to router, and NVR to monitor.

4.3 Initial Configuration

Upon first startup, the NVR will guide you through an initial setup wizard. This typically includes:

- Setting up a secure password for the NVR.
- Configuring network settings (DHCP is usually recommended for ease of use).
- Formatting the pre-installed 2TB HDD if prompted.
- Scanning and adding connected cameras.

It is crucial to set a strong, unique password for your NVR to protect your system from unauthorized access.

5. OPERATING

5.1 Live View

You can view live camera feeds through multiple interfaces:

- **TV Monitor:** Directly connected to the NVR via HDMI/VGA.
- **Mobile App:** Download the 'Guard Live' app (available on App Store and Google Play) for remote viewing on smartphones.
- **PC Client Software:** Install the client software on your computer for viewing and management.

Your browser does not support the video tag.

Video: Demonstration of the Hiseeu 4K 8MP PoE Security Camera system's live view capabilities and features.

Your browser does not support the video tag.

Video: Overview of the Hiseeu Ultra HD 4K 8 Wired Camera System, highlighting its features and performance.

5.2 Recording

The system supports continuous recording to the pre-installed 2TB HDD. You can also configure motion detection recording to save storage space and focus on important events.

5.3 Playback

Access recorded footage using the following playback modes:

- **Sync Playback:** View footage from up to 4 cameras simultaneously.
- **Motion Detection Playback:** Review only segments where motion was detected.
- **Common Playback:** Standard timeline-based playback.

Hiseeu Security Cameras Lead the Way



Fully Upgraded Version

- 4K HD Higher Resolution
- 121° Wide View Angle
- Two Way Audio
- Smart Human Vehicle Detect
- 16 channels NVR (Need Extra PoE Switch)



Others

- 1080P/5MP Low Resolution
- 78° Narrow View Angle
- No Audio or One Way
- Normal Motion Detect
- 4/8 Channels NVR

Image: Smart Playback Modes interface on the NVR, showing options for reviewing recorded footage.

5.4 Night Vision Modes

The cameras offer enhanced night surveillance with three modes:

- **Black-and-White:** Standard infrared night vision.
- **Color Night Mode:** Provides full-color video in low-light conditions.

- **Alarm Light:** The camera's built-in light activates upon detecting suspicious objects, enhancing visibility and acting as a deterrent.

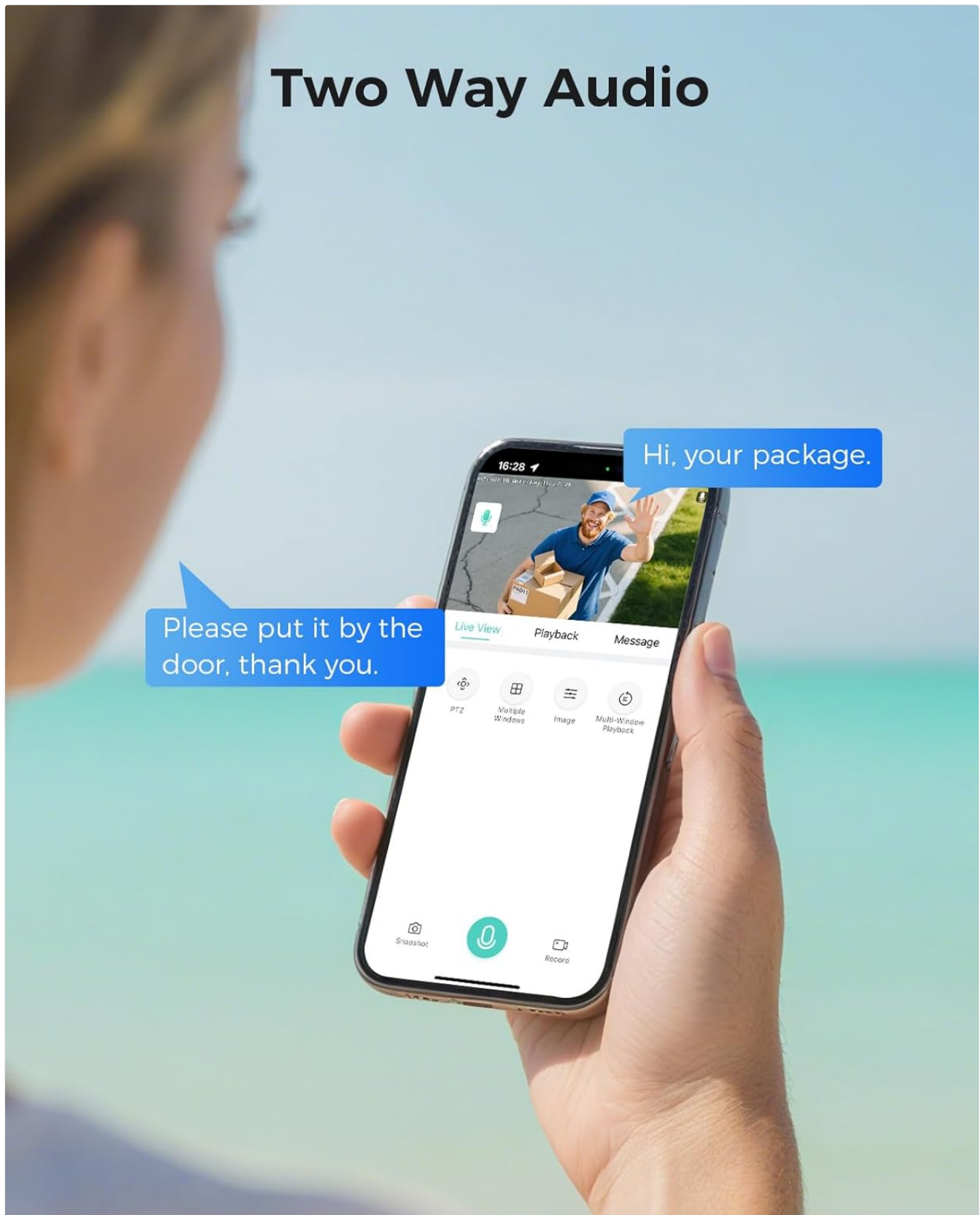


Image: Two Night Vision Modes, illustrating color and infrared views at night.

5.5 Smart Detection (AI)

Leverage AI technology for precise human and vehicle detection:

- **Customizable Alarm Areas:** Define specific zones for detection to minimize irrelevant alerts.
- **Instant Notifications:** Receive immediate app push notifications when a human or vehicle is detected.

- **Audible/Visual Alarms:** Configure warning lights and sounds to deter intruders.
- **NVR Buzzer:** The NVR can emit a beeping sound as an additional alert.

Smart Human/Vehicle Detect

Can set up certain alarm area



App Push



Sound Alerts



Light Alarm



Image: Smart Human/Vehicle Detect, showing how to set up alarm areas and notification types.

5.6 Two-Way Audio

The integrated two-way audio feature allows you to communicate directly through the camera:

- Speak into your mobile app, and your voice will be broadcast through the camera's speaker.
- Listen to audio from the camera's microphone through the app or connected TV monitor.

121° Wide View Angle

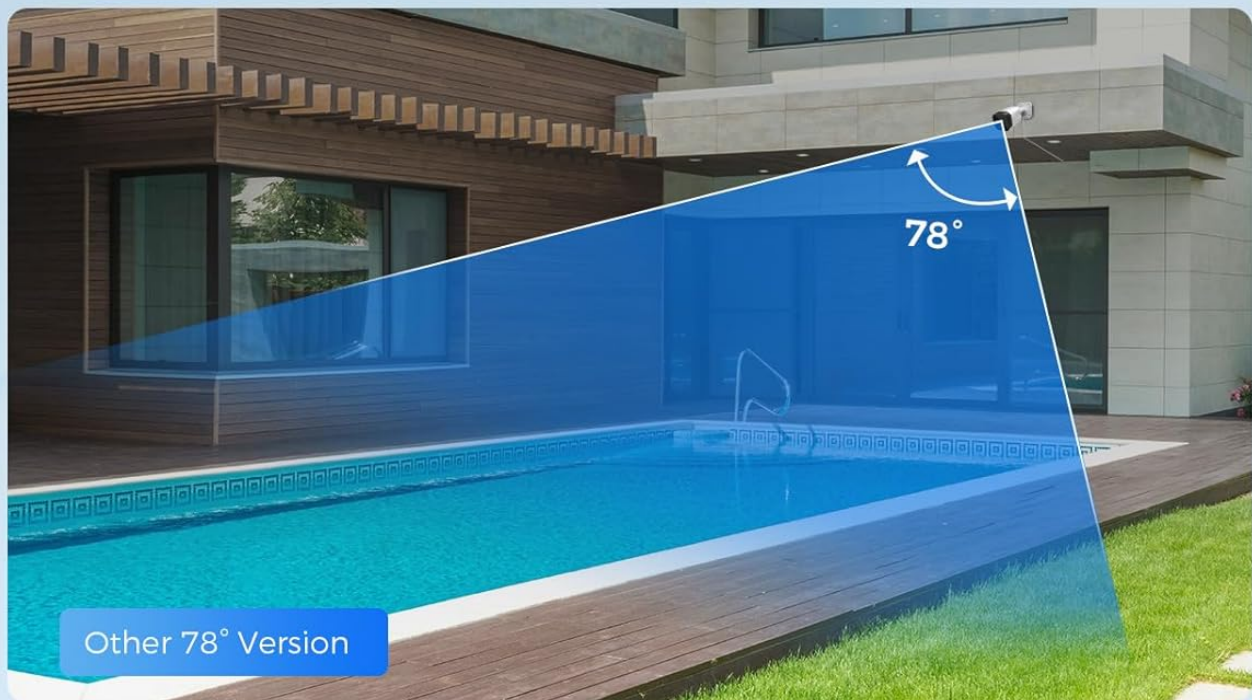


Image: Two Way Audio feature, demonstrating communication between a smartphone user and someone near the camera.

5.7 Remote Access

To access your security system remotely:

- Ensure your NVR is connected to a router with internet access.
- Download and install the 'Guard Live' mobile app or the PC client software.
- Follow the in-app instructions to add your NVR using its unique ID or QR code.

6. MAINTENANCE

- **Regular Cleaning:** Periodically clean camera lenses with a soft, damp cloth to ensure clear image quality. Avoid abrasive cleaners.
- **Firmware Updates:** Check the Hiseeu official website or app for available firmware updates to ensure optimal performance and security.
- **HDD Management:** The 2TB HDD will automatically overwrite older footage when full. You can configure recording schedules and motion detection settings to manage storage efficiently.
- **Cable Inspection:** Regularly inspect all Ethernet cables for damage, especially those exposed to outdoor elements.
- **Power Supply:** Ensure the NVR's power adapter is securely connected and free from damage.

7. TROUBLESHOOTING

- **No Video Display:** Check all cable connections (HDMI, Ethernet to cameras). Ensure the NVR and cameras are powered on. Verify monitor input selection.
- **No Remote Access:** Confirm the NVR is connected to the internet router. Check router settings and NVR network configuration. Ensure the mobile app or PC client is correctly configured with the NVR's ID.
- **Poor Image Quality:** Clean camera lenses. Ensure cameras are securely mounted and not obstructed. Check for strong light sources directly facing the camera at night.
- **False Motion Alarms:** Adjust motion detection sensitivity and define specific detection zones to exclude irrelevant areas (e.g., moving trees).
- **NVR Not Recording:** Check HDD status in NVR settings. Ensure the HDD is formatted and not full. Verify recording schedules and motion detection settings.
- **Password Issues:** If you forget your NVR password, refer to the NVR's on-screen recovery options or contact Hiseeu technical support for assistance.

8. SPECIFICATIONS

Feature	Specification
Brand	Hiseeu
Model Number	PK-8YHB88-BT
Connectivity Technology	Ethernet, Wired
Video Capture Resolution	4K (3840x2160p)
Special Features	App Control, Audio Recording, AI Human/Vehicle Detection
Number of Channels	8 (expandable to 16 with external PoE switch)
Memory Storage Capacity	2 TB HDD (pre-installed)
Power Source	Corded Electric
Item Dimensions (L x W x H)	10 x 14 x 12 inches
Compatible Devices	Cameras, Laptops, Personal Computers, Smartphones, TV
Low Light Technology	Night Vision (Color Night Mode available)
Night Vision Range	100 Feet

Feature	Specification
Frame Rate	25 FPS
Recording Mode	Continuous, Motion Detection
Total USB Ports	2
Lens Type	Wide Angle (2.8mm)
Video Input	RJ45
Viewing Angle	121 Degrees

9. WARRANTY AND SUPPORT

- **Product Warranty:** Your Hiseeu security system is covered by a product warranty. Please refer to the warranty card included in your package or contact Hiseeu customer service for specific details regarding coverage and duration.
- **Lifetime Technical Support:** Hiseeu provides lifetime technical support for its products. For any technical issues, setup assistance, or troubleshooting, please contact our support team.
- **30-Day Free Return:** If you are not satisfied with your purchase, Hiseeu offers a 30-day free return policy. Please ensure the product is returned in its original condition and packaging.

For support, visit the Hiseeu official website or contact the customer service provided with your product documentation.