

Donerton W90

Donerton W90 Wireless Earbuds Bluetooth Headphones Noise Cancelling User Manual

Model: W90 | Brand: Donerton

1. INTRODUCTION

This manual provides detailed instructions for the proper use and maintenance of your Donerton W90 Wireless Earbuds. Please read this manual thoroughly before using the product to ensure optimal performance and longevity.

The Donerton W90 Wireless Earbuds feature advanced Bluetooth 5.4 technology for stable connections, dynamic drivers for clear stereo sound, and a long-lasting battery life with a convenient LED power display.



Image 1.1: Comparison of Bluetooth 5.3 vs. 5.4, highlighting lower latency, stronger anti-interference, and lower power consumption with Bluetooth 5.4.

2. PACKAGE CONTENTS

Verify that all items are present in the package:

- Charging Case (1)
- Wireless Earbuds (2)
- Replacement Ear Caps (4 pairs - various sizes)
- Type-C Charging Cable (1)
- Instruction Book (1)

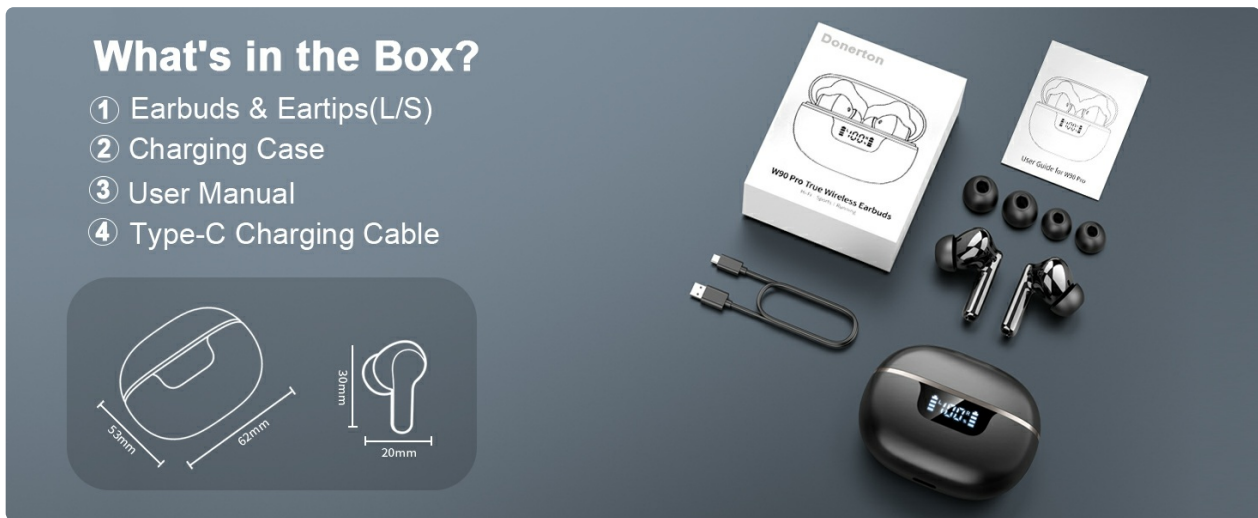


Image 2.1: Visual representation of the Donerton W90 package contents, including the earbuds, charging case, various ear tip sizes, a Type-C charging cable, and the user manual.

3. PRODUCT OVERVIEW

The Donerton W90 earbuds are designed for comfort and high-quality audio. Each earbud is lightweight and features a 13mm dynamic driver for rich sound. The charging case includes an LED display to show battery levels.



Image 3.1: The Donerton W90 Wireless Earbuds resting in their charging case, which features a digital LED display indicating battery percentages for both earbuds and the case.

SUPERIOR Hi-Fi STEREO SOUND

13mm speaker and nano-scale material emits a sound closer to the original sound



Image 3.2: An exploded view diagram showcasing the 13mm dynamic driver and nano-scale material, designed to produce superior Hi-Fi stereo sound with deep bass.

4. SETUP

4.1 Charging the Earbuds and Case

Before first use, fully charge the earbuds and charging case. Use the provided Type-C charging cable.

- Insert the Type-C cable into the charging port on the case.
- Connect the other end to a USB power source.
- The LED display on the case will show the charging status.
- A full charge takes approximately 1.5 hours.



Image 4.1: The Donerton W90 charging case being charged via a Type-C cable, illustrating the 40-hour total playtime and the 1.5-hour full charge time.

4.2 Pairing with a Device

The earbuds feature one-step pairing for convenience.

1. Ensure the earbuds are charged.
2. Open the charging case. The earbuds will automatically power on and enter pairing mode.
3. On your device (smartphone, tablet, laptop), enable Bluetooth.
4. Search for available Bluetooth devices and select "W90 Pro" (or similar name).
5. Once connected, the earbuds will automatically pair with this device when taken out of the case in the future.

One-step Pairing

Auto on, auto connected when take the earbuds out of the charging case.
Provide faster wireless connection to your devices



Image 4.2: A smartphone displaying its Bluetooth settings, showing the 'W90 Pro' earbuds as a connected device, demonstrating the one-step pairing process.

5. OPERATING INSTRUCTIONS

5.1 Smart Touch Controls

The earbuds are equipped with touch sensors for various functions:

Action	Function
Tap Once (L or R)	Answer Call / Play/Pause Music
Press and Hold 2s (L or R)	Reject Call / Hang Up Call
Single Tap on L	Volume Down
Single Tap on R	Volume Up
Tap Twice (L or R)	Next Track

Action	Function
Press and Hold L 2s	Previous Track
Tap Three Times (L or R)	Activate Voice Assistant



Image 5.1: An illustration detailing the various smart touch control functions available on the Donerton W90 earbuds, including voice assistant, call management, volume adjustment, and track navigation.

5.2 Wearing the Earbuds

Select the appropriate ear tip size for a secure and comfortable fit. The ergonomic design ensures stability during various activities.

- Gently insert the earbud into your ear canal.
- Rotate slightly until it feels snug and stable.
- Ensure the microphone is facing downwards for optimal call clarity.

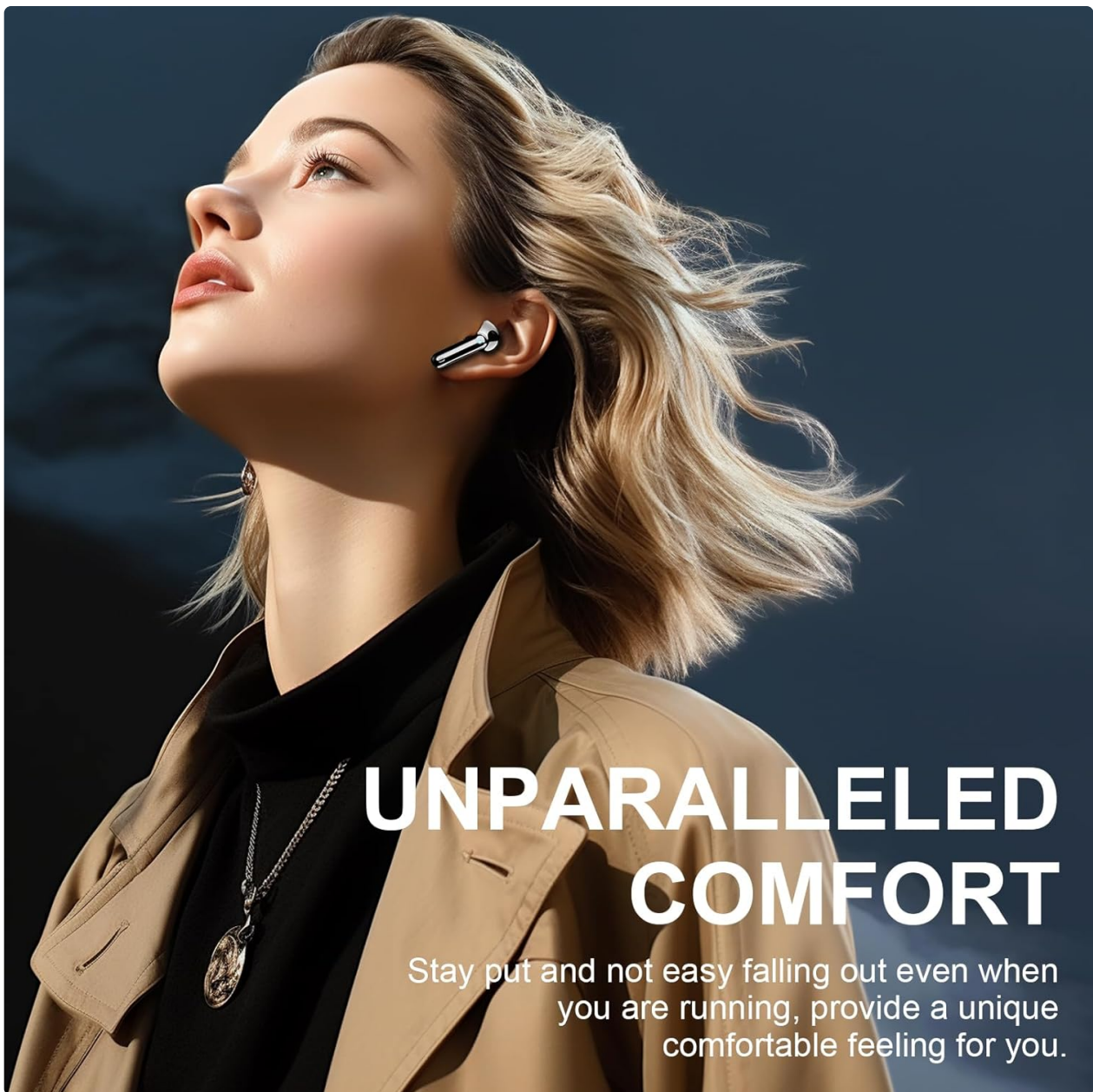


Image 5.2: A woman wearing the Donerton W90 earbuds, demonstrating their comfortable and secure fit, designed to stay in place during movement.

5.3 Call Functions

The earbuds feature built-in microphones and CVC algorithm for clear calls.

- **Answer Call:** Tap either earbud once.
- **Reject Call:** Press and hold either earbud for 2 seconds.
- **Hang Up Call:** Press and hold either earbud for 2 seconds during a call.



Image 5.3: An illustration highlighting the four built-in microphones (two ENC mics and two talk mics) in the earbuds, which work with ENC noise reduction for clear call quality.

5.4 Single/Twin Mode

The earbuds can be used individually (Single Mode) or together (Twin Mode).

- **Single Mode:** Take one earbud out of the charging case. It will automatically connect to your device. The other earbud can remain in the case.
- **Twin Mode:** Take both earbuds out of the charging case. They will automatically connect to each other and then to your device.



Image 5.4: A visual depicting a couple using the Donerton W90 earbuds, demonstrating the flexibility of using them in either single or twin mode for shared listening experiences.

6. MAINTENANCE

6.1 Cleaning

- Regularly clean the earbuds and charging case with a soft, dry, lint-free cloth.
- Remove ear tips and clean them with mild soap and water, then dry thoroughly before reattaching.
- Do not use harsh chemicals or abrasive materials.

6.2 Storage

- Store the earbuds in their charging case when not in use to protect them and keep them charged.

- Avoid extreme temperatures and high humidity.

The earbuds are rated IP7 waterproof, making them resistant to sweat and splashes. However, they are not designed for submersion.








Image 6.1: An illustration demonstrating the IP7 waterproof rating of the earbuds, indicating resistance to rainwater, sweat, and splashes, suitable for sports and outdoor activities.

7. TROUBLESHOOTING

Problem	Possible Solution
Earbuds not pairing	Ensure earbuds are charged. Place them back in the case, close, then reopen. Check your device's Bluetooth settings and try reconnecting.
Only one earbud working	Ensure both earbuds are charged. Place both back in the case, close, then reopen. They should automatically connect to each other.
Low volume or poor sound quality	Adjust volume on both your device and using earbud touch controls. Ensure ear tips are clean and properly seated in your ear.
Charging case not charging	Check the Type-C cable and power adapter. Ensure connections are secure.
Touch controls unresponsive	Ensure your fingers are clean and dry. Restart the earbuds by placing them in the case and taking them out again.

8. SPECIFICATIONS

Feature	Detail
Model Name	W90
Connectivity Technology	Wireless (Bluetooth)
Bluetooth Version	5.4

	<p>Donerton POWER Q20 PRO Waterproof Wireless Sports Headphones User Manual</p> <p>User manual for the Donerton POWER Q20 PRO, a pair of waterproof wireless sports headphones. This guide covers setup, pairing, usage, and troubleshooting in multiple languages.</p>
	<p>Donerton Q20 PRO Bluetooth Headset FAQ and User Guide</p> <p>Frequently asked questions and usage instructions for the Donerton Q20 PRO Bluetooth headset, covering compatibility, connectivity, charging, sound features, and troubleshooting.</p>
	<p>Donerton POWER Q20 PRO Waterproof Wireless Sports Headphones User Manual</p> <p>User manual for Donerton POWER Q20 PRO Waterproof Wireless Sports Headphones, covering setup, operation, charging, troubleshooting, and package contents.</p>
	<p>Waterproof Speaker T7 User Manual</p> <p>This manual provides instructions for operating the Waterproof Speaker T7, including its features, functions, and technical specifications. Learn how to pair devices, use TWS mode, and understand the operational keys.</p>
	<p>Donerton T50S Smart Watch Operating Instructions & User Guide</p> <p>Comprehensive operating instructions and user guide for the Donerton T50S Smart Watch. Learn how to connect, use features like calls, fitness tracking, sleep monitoring, and troubleshoot common issues.</p>