

ThermoPro TP420

ThermoPro TP420 2-in-1 Thermometer User Manual

Model: TP420

INTRODUCTION

This manual provides comprehensive instructions for the safe and effective use of your ThermoPro TP420 2-in-1 Instant Read Thermometer and Instant Read Meat Thermometer Digital. Please read this manual thoroughly before operation and retain it for future reference.

PRODUCT OVERVIEW

The ThermoPro TP420 is a versatile temperature measurement device designed for both internal food temperatures using a probe and surface temperatures using an infrared sensor. It offers high accuracy and rapid response times for various cooking and household applications.



Image: The ThermoPro TP420 2-in-1 thermometer (red) and a separate instant read meat thermometer (orange), both featuring digital displays and probes.

KEY FEATURES

- **Pro-Grade Accuracy:** Measures internal temperatures with $\pm 0.9^{\circ}\text{F}$ accuracy in approximately 3 seconds.
- **2-in-1 Functionality:** Combines an infrared sensor for surface temperatures and a probe for internal food temperatures.
- **Waterproof Design:** IP67-rated for protection against splashes and easy cleaning under running water.
- **Wide Temperature Range:** Probe measures from -58°F to 572°F ; IR sensor measures from -58°F to 1022°F .
- **Magnetic Back & Foldable Hook:** Allows for convenient storage and accessibility.
- **Backlit Screen:** Ensures readability in various lighting conditions.

TWO IN ONE INFRARED AND PROBE THERMOMETER



Image: A comparison highlighting the TempPro's $\pm 0.9^{\circ}\text{F}$ high accuracy, IP68 full protection, and long-lasting power, contrasted with less accurate, leak-prone, and frequently replaced alternatives.

SETUP

Battery Installation

1. Locate the battery compartment on the back of the thermometer.
2. Open the battery cover.
3. Insert the required batteries (typically AAA, check device for specific type) according to the polarity indicators (+/-).
4. Close the battery cover securely.

TWO IN ONE INFRARED AND PROBE THERMOMETER



Image: A close-up view of the battery compartment on the TempPro thermometer, showing a single AAA battery inserted, illustrating the "Long-lasting Power" feature.

Initial Power On

Once batteries are installed, the device should power on automatically or by pressing the power button. The display will illuminate.

OPERATING INSTRUCTIONS

Using the Probe Thermometer (Internal Temperature)

1. Unfold the stainless steel probe from the thermometer body. This action typically turns the device on.
2. Insert the tip of the probe into the thickest part of the food, avoiding bone or gristle.
3. Wait for the temperature reading to stabilize on the digital display (approximately 2-3 seconds).
4. To switch between Celsius and Fahrenheit, press the °C/°F button.

5. To hold the current temperature reading, press the "LOCK/CAL" button. Press again to release.

PREMIUM SENSOR

Delivers pinpoint accuracy & rapid readings



$\pm 0.9^{\circ}\text{F}$

High Accurate



2~4s

Speedy Response



Image: A hand holding the orange ThermoPro TP420 thermometer, with its probe inserted into a piece of meat on a grill, demonstrating how to take internal temperature readings. The display shows "PROBE TEMP 159.6°F".

TAKE INTERNAL TEMPERATURES WITH THE **PROBE SENSOR**



Instantly reads in
2-3 seconds



Accurate to
 $\pm 1.8^{\circ}\text{F}$ ($\pm 1.0^{\circ}\text{C}$)



Temperature range:
 -58°F to 572°F



Image: The red ThermoPro thermometer with its probe submerged in boiling water in a pot, illustrating its use for various cooking applications. The display shows "212.8°F".

Using the Infrared (IR) Thermometer (Surface Temperature)

1. Ensure the probe is folded away.
2. Point the IR sensor (located at the top of the device) towards the surface you wish to measure.
3. Press and hold the IR button (often labeled with a target icon). The display will show the surface temperature.
4. Release the button to stop measuring.
5. Note: The laser pointer for targeting is not visible on this model.



Image: A hand holding the orange ThermoPro TP420 thermometer, pointing its IR sensor towards a pizza in a hot oven, demonstrating non-contact surface temperature measurement. The display shows "SURFACE TEMP 285.0°F".

Display and Backlight

The large digital display shows temperature readings clearly. Press the "LIGHT" button to activate the backlight for improved visibility in low-light conditions. The backlight will automatically turn off after a short period of inactivity to conserve battery.

NON-CONTACT MEASUREMENTS OF SURFACE TEMPERATURES



Temperature Range:
-58°F to 1022°F



Refreshes in
0.5 seconds



Accurate to
 $\pm 3^{\circ}\text{F}$ ($\pm 1.5^{\circ}\text{C}$)



Image: Two side-by-side views of the ThermoPro thermometer display, one showing large digits in bright outdoor light and the other showing the backlit screen in a darker setting, illustrating readability in different environments.

Auto-Off Feature

The thermometer features an auto-off function to save battery life. If no buttons are pressed and the probe remains unfolded for approximately 90 seconds, the device will automatically power off.

MOTION-ACTIVATED, FOLDAWAY DESIGN

Save battery life & easily store away



Image: An illustration demonstrating the motion-activated and foldaway design of the ThermoPro thermometer, showing how unfolding the probe turns it on, and its compact folded state for storage, along with the 90-second auto-off feature.

MAINTENANCE AND CARE

- **Cleaning:** The thermometer is IP67 waterproof. After use, clean the probe with a damp cloth or rinse under running water. Do not immerse the entire unit in water for extended periods. Use mild soap if necessary.
- **Storage:** Fold the probe back into the unit for safe storage. The magnetic back allows it to be stored on metal surfaces. Store in a dry place away from extreme temperatures.
- **Battery Replacement:** Replace batteries when the display dims or the device fails to power on.
- **Calibration:** The thermometer is factory calibrated. If recalibration is needed, refer to the "LOCK/CAL" button function. For advanced calibration, consult ThermoPro support.



Image: A collage of four images showing the ThermoPro thermometer's IPX6 waterproof rating: handling oily hands, being used in heavy steam, and being rinsed under running water, demonstrating its durability and ease of cleaning.

TROUBLESHOOTING

Problem	Possible Cause	Solution
Device does not power on.	Low or dead batteries; incorrect battery installation.	Replace batteries; ensure correct polarity.
Inaccurate temperature readings.	Probe not inserted deep enough; probe tip touching bone/gristle; IR sensor obstructed or too far from surface.	Reinsert probe into thickest part of food; ensure clear line of sight for IR sensor.

Problem	Possible Cause	Solution
Display is dim or flickering.	Low battery power.	Replace batteries.
Auto-off activates too quickly.	No activity detected.	This is a power-saving feature. Interact with the device (e.g., unfold probe, press button) to keep it active.

SPECIFICATIONS

- Model:** TP420
- Probe Temperature Range:** -58°F to 572°F (-50°C to 300°C)
- IR Temperature Range:** -58°F to 1022°F (-50°C to 550°C)
- Probe Accuracy:** ±0.9°F (±0.5°C)
- IR Accuracy:** ±3°F (±1.5°C)
- Probe Response Time:** 2-3 seconds
- IR Response Time:** 0.5 seconds
- Waterproof Rating:** IP67
- Power Source:** Battery Powered (e.g., 1x AAA, check device for specific type)
- Display Type:** Digital, Backlit
- Special Features:** Fast Reading System, High Accuracy, Non-Contact (IR), Waterproof, Magnetic Back, Foldable Probe, Auto-Off.
- Certification:** NSF





WARRANTY AND SUPPORT

ThermoPro products typically come with a limited warranty. For specific warranty details, product registration, or technical support, please visit the official ThermoPro website or contact their customer service. Keep your purchase receipt as proof of purchase.

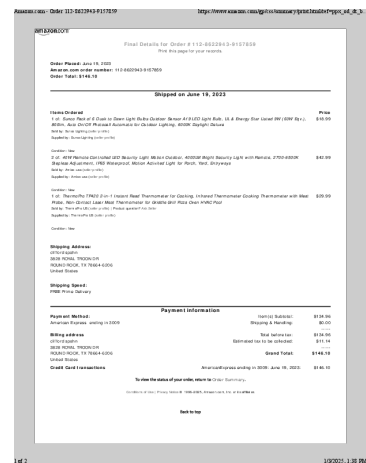
Official ThermoPro Store: [ThermoPro Amazon Store](#)



Related Documents

	<p>ThermoPro TP620 Digital Instant Read Thermocouple Thermometer Instruction Manual</p> <p>User guide for the ThermoPro TP620 digital instant-read thermocouple thermometer, detailing features, specifications, operation, calibration, and care for accurate food temperature measurements.</p>
	<p>ThermoPro TP-15H Digital Instant Read Thermometer: User Manual & Features</p> <p>Comprehensive instruction manual for the ThermoPro TP-15H digital instant read food thermometer. Learn about its features, specifications, how to use it for cooking, calibration, care, and warranty.</p>
	<p>ThermoPro TP510 Digital Candy & Frying Thermometer - Instruction Manual</p> <p>User manual for the ThermoPro TP510 digital candy and frying thermometer. Learn about its features, specifications, how to measure temperature, care instructions, warranty, and compliance information.</p>
	<p>ThermoPro TP620 Digital Instant Read Thermocouple Thermometer Instruction Manual</p> <p>Comprehensive instruction manual for the ThermoPro TP620 digital instant read thermocouple thermometer, covering features, specifications, usage, calibration, care, and disposal.</p>

Documents - ThermoPro – TP420



[pdf]

Amazon Order 112 8622943 9157859 skip work THERMOPRO INVOICE

a319ad60164373f5652d06da214e8c22 buythermopro wpforms 41732

edfad062f553d75d10537e7a1f2e2acc |||

Amazon.com - Order 112-8622943-9157859

https://www.amazon.com/gp/css/summary/print.html/ref=ppx_od_ ... sa seller profile

Supplied by: Amico-usa seller profile 42.99 Condition: New 1 of: ThermoPro **TP420** 2-in-1 Instant Read Thermometer for Cooking, Infrared Thermometer Cooking Thermometer with Mea...

lang:en score:24 filesize: 72.98 K page_count: 2 document date: 2025-01-03



[ThermoPro TP420W Two-in-One Infrared & Probe Thermometer User Manual](#)

User manual for the ThermoPro TP420W Two-in-One Instant Infrared & Probe Thermometer. Learn about its features, specifications, how to use it for infrared and probe temperature measurements, safety precautions, and warranty information.

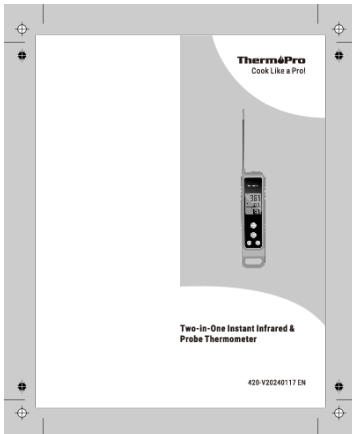
lang:en score:22 filesize: 3.77 M page_count: 6 document date: 2025-06-05



[ThermoPro Two-in-One Instant Infrared and Probe Thermometer User Manual](#)

User manual for the ThermoPro Two-in-One Instant Infrared and Probe Thermometer, detailing its features, specifications, safe use, and care instructions.

lang:en **score:22** filesize: 3.97 M page_count: 6 document date: 2022-05-17



[ThermoPro TP420 Two-in-One Infrared & Probe Thermometer User Manual](#)

User guide for the ThermoPro TP420, a two-in-one instant infrared and probe thermometer. Learn about its features, specifications, how to measure temperatures, safety precautions, and warranty information.

lang:en **score:13** filesize: 13.3 M page_count: 6 document date: 2024-01-17