

VEVOR 250

VEVOR Plastic Shredder Crusher 5.5HP/4.0KW Model 250 User Manual

Comprehensive instructions for safe and efficient operation, maintenance, and troubleshooting.

[Setup](#) [Operation](#) [Maintenance](#) [Troubleshooting](#) [Specifications](#) [Warranty & Support](#)

1. SETUP AND INSTALLATION

Before operating the VEVOR Plastic Shredder Crusher, ensure proper setup and installation according to these guidelines.

1.1 Power Connection

This product operates on a **220V three-phase four-wire system**. It does not come with a plug and requires professional wiring for use. Ensure all electrical connections comply with local codes and safety standards.

1.2 Machine Placement and Mobility

The unit is equipped with **four wheels**: two fixed front wheels and two rear 360-degree swivel casters. This design allows for easy movement and positioning of the machine. Place the shredder on a stable, level surface in a well-ventilated area.



Image: VEVOR Plastic Shredder Crusher showing its four wheels for easy transport.

2. OPERATING INSTRUCTIONS

Follow these steps for safe and effective operation of your plastic shredder.

2.1 Material Loading and Crushing Capacity

The shredder features a **5.5HP (4.0KW) pure copper motor** with a **1750 RPM motor speed** and an **8mm mesh size**, providing a crushing capacity of **150-200 kg/h**. It is designed to efficiently shred a wide range of materials including PC, PVC, ABS, PET, EPS, PU, HDPE, rubber, leaves, wood, and nylon. Use the convenient feed button for faster material loading and smoother feeding.

1750RPM Powerful Material Crushing

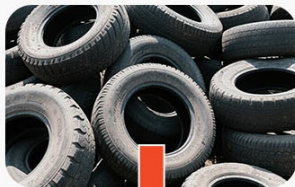
PC | PVC | ABS | PET | EPS | PU | HDPE

- 150 to 200 kg/h Crushing Capacity
- 5.5HP Pure Copper Motor



Image: Illustration of the 5.5HP pure copper motor, 1750 RPM speed, and 150-200 kg/h crushing capacity, with examples of various shredded plastics.

Wide Applications



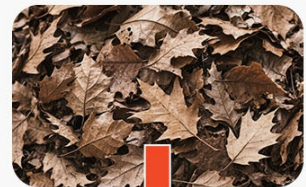
Rubber



PTFE

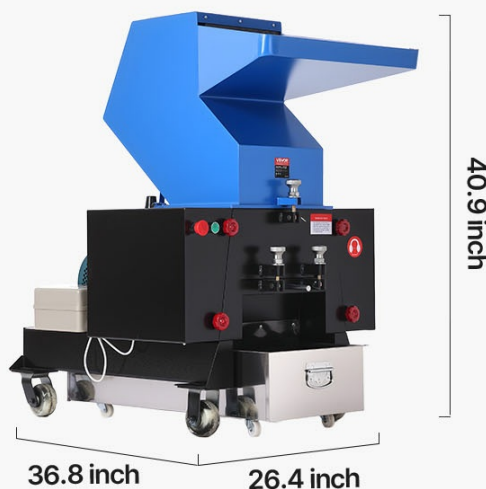


ABS



Leaves

Image: Detailed view of the enlarged feed inlet (9.8 x 6.5 inches) for efficient material loading and the thickened baffle plate designed to prevent material splashing.



Item Model Number: **250** Voltage: **AC220V 60HZ Three-Phase**
Motor Power: **5.5HP / 4000 W** Crushing Capacity: **150 to 200 kg/h**
Motor Speed: **1750 RPM** Net Weight: **502.7 lbs / 228 kg**
Mesh Size: **8 mm** Feed Port Dimensions: **9.8 x 6.5 in / 250 x 165 mm**
8PCS SDK-11 Blades: **6 Rotating Blades + 2 Fixed Blades**
Noise-Reducing Design: **Double-Layer Steel Plates + Soundproofing Cotton**
Product Dimensions: **36.8 x 26.4 x 40.9 in / 935 x 670 x 1040 mm**

PLEASE NOTE:
The product adopts 220V three-phase four-wire system, does not come with a plug and needs to be wired for use

Image: Examples of materials suitable for crushing, such as plastic bottles, defective injection molded parts, rubber, non-woven fabric, PVC materials, and leaves.

2.2 Blade System

The shredder is equipped with **8 SKD-11 alloy steel blades** (6 rotating and 2 fixed). These blades are designed for high hardness and impact resistance, ensuring efficient crushing. The blades can be removed, polished, and reused when dull.



Impact-Resistant Alloy Steel Blades

Sharp and high hardness quickly crush materials

6 Rotating Blades

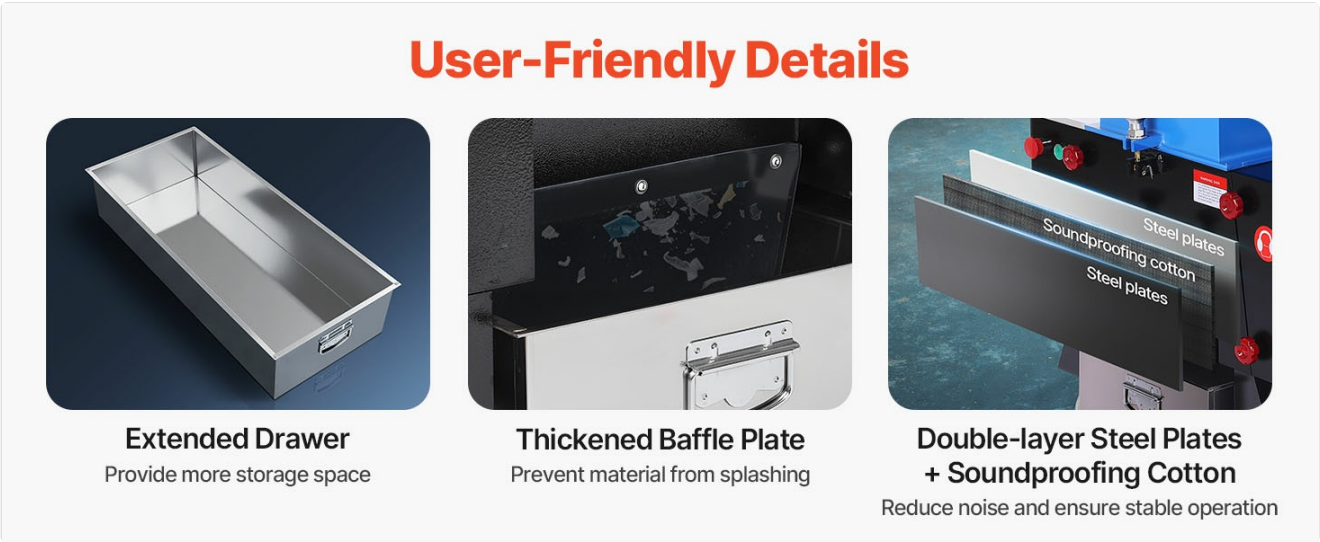
2 Fixed Blades (SKD-11 Blades)

Image: Illustration comparing the durable, wear-resistant SKD-11 blades (6 rotating + 2 fixed) of the VEVOR shredder with less durable ordinary blades.

2.3 Safety Features

The machine incorporates **dual safety protection** for secure operation:

- **Overload Protection:** Automatic shutdown in case of motor overload.
- **Power Interlock Protection:** Automatic power cutoff when the lid is opened during operation.



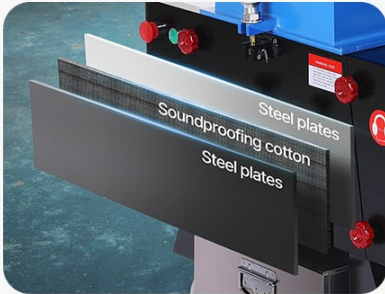
User-Friendly Details



Extended Drawer
Provide more storage space



Thickened Baffle Plate
Prevent material from splashing



Double-layer Steel Plates + Soundproofing Cotton
Reduce noise and ensure stable operation

Image: Visual representation of the overload protection (automatic shutdown) and power interlock protection (automatic power off when lid is opened).

2.4 Noise Reduction

The shredder features a **double-layer soundproof design**, consisting of double-layer steel plates and soundproofing cotton. This design minimizes noise and vibrations during operation. For optimal long-term ear protection, wearing earmuffs is highly recommended.

360° Rotation Rear Wheels Easy to move around different sites

Front Directional Wheels + Rear Swivel Casters

360°
360° Rotation



Image: Exploded view illustrating the double-layer steel plates and soundproofing cotton that contribute to the machine's low noise operation.

2.5 Video Demonstrations

Plastic Bottle Shredding Demonstration

Your browser does not support the video tag.

Video: This video demonstrates the VEVOR Plastic Shredder Crusher in action, showing how plastic bottles are fed into the machine and processed into smaller granules. It highlights the efficiency of the shredding process.

Plastic Cup Shredding Demonstration

Your browser does not support the video tag.

Video: This video showcases the shredder's capability to process plastic cups, illustrating the transformation of larger plastic items into uniform granules suitable for recycling or further processing.

3. MAINTENANCE

Regular maintenance ensures the longevity and optimal performance of your shredder.

3.1 Blade Care

The **SKD-11 blades** are designed to be removed, polished, and reused. Regularly inspect blades for sharpness and damage. If dull, remove and sharpen them. **Note: Avoid shredding glass or metal, as this may damage the blades and the machine.**

3.2 Cleaning and Inspection

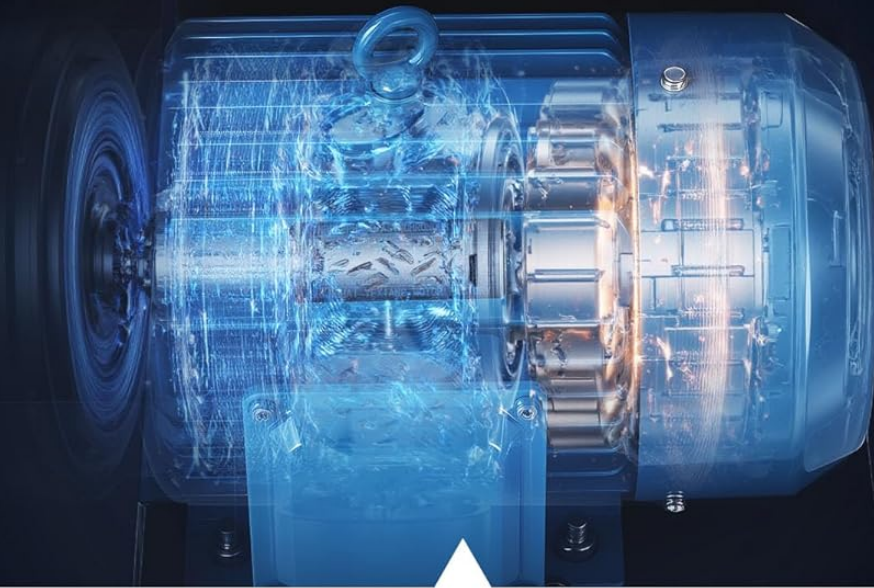
The machine features manually removable lock nuts for quick disassembly, facilitating easy cleaning and regular maintenance. After each use, or as needed, clean out any accumulated material from the crushing chamber and the extended drawer. Ensure all safety mechanisms are free from debris and functioning correctly.

150 to 200 kg/h Powerful Crushing Capacity

Easily crush soft and hard plastics

1750 RPM
Motor Speed

AC220V
60HZ 3PH



5.5 HP Pure Copper Motor

Lower Energy Consumption, Higher Efficiency



Image: General view of the VEVOR Plastic Shredder Crusher, highlighting accessible parts for cleaning and maintenance.

4. TROUBLESHOOTING

This section provides guidance for common operational issues.

4.1 Machine Not Starting

- Ensure the power supply is correctly connected and active (220V three-phase).
- Check if the lid is securely closed. The **power interlock protection** prevents operation if the lid is open.

- Verify that the emergency stop button, if present, is not engaged.

4.2 Reduced Crushing Performance


- Inspect the blades for dullness or damage. Sharpen or replace as necessary.
- Ensure the material being fed is within the recommended types and sizes.
- Check for any blockages in the feed inlet or crushing chamber.

4.3 Machine Stops During Operation

- This may indicate activation of the **overload protection**. Turn off the machine, clear any excessive material, and allow the motor to cool before restarting.
- Check for any foreign objects (e.g., metal, glass) that may have entered the crushing chamber and caused a jam.

5. SPECIFICATIONS

Feature	Detail
Model Number	250
Motor Power	5.5HP / 4.0KW (Pure Copper Motor)
Motor Speed	1750 RPM
Voltage	AC220V 60Hz 3-Phase
Crushing Capacity	150-200 kg/h
Mesh Size	8 mm
Blades	8 Pcs SKD-11 (6 Rotating + 2 Fixed)
Noise Reduction	Double-Layer Steel Plates + Soundproofing Cotton
Product Dimensions (L x W x H)	36.81 x 26.38 x 40.94 inches (935 x 670 x 1040 mm)
Item Weight	503 pounds (228 kg)



40.9 inch

36.8 inch 26.4 inch

Item Model Number: **250** Voltage: **AC220V 60HZ Three-Phase**
Motor Power: **5.5HP / 4000 W** Crushing Capacity: **150 to 200 kg/h**
Motor Speed: **1750 RPM** Net Weight: **502.7 lbs / 228 kg**
Mesh Size: **8 mm** Feed Port Dimensions: **9.8 x 6.5 in/ 250 x 165 mm**
8PCS SDK-11 Blades: **6 Rotating Blades + 2 Fixed Blades**
Noise-Reducing Design: **Double-Layer Steel Plates + Soundproofing Cotton**
Product Dimensions: **36.8 x 26.4 x 40.9 in / 935 x 670 x 1040 mm**

PLEASE NOTE:
The product adopts 220V three-phase four-wire system, does not come with a plug and needs to be wired for use

Image: Overview of the machine's dimensions and key technical specifications.

6. WARRANTY AND SUPPORT

VEVOR is committed to providing quality products and customer satisfaction.

- **Returns:** This product is eligible for **30-day easy returns**. Please refer to the retailer's return policy for detailed instructions.
- **Customer Support:** For any questions, technical assistance, or support needs, please contact VEVOR customer service.