



[Manuals.plus](#) /

> [VEVOR](#) /

> VEVOR Class 3 Trailer Hitch (Model NT-1602) Instruction Manual for Toyota Highlander 2014-2019

VEVOR NT-1602

VEVOR Class 3 Trailer Hitch (Model NT-1602) Instruction Manual

For 2014-2019 Toyota Highlander

1. INTRODUCTION

This manual provides detailed instructions for the installation, operation, maintenance, and troubleshooting of your VEVOR Class 3 Trailer Hitch, Model NT-1602. This product is specifically designed for 2014-2019 Toyota Highlander vehicles. Please read this manual thoroughly before installation and use to ensure safe and correct operation. The VEVOR Class 3 Trailer Hitch features a 2-inch receiver and is constructed from durable Q345B steel with a powder-coated finish for enhanced wear and rust resistance. Its 3-piece split design facilitates easier installation.

2. SAFETY INFORMATION

Always prioritize safety during installation and operation. Failure to follow these instructions could result in property damage, serious injury, or death.

- Read all instructions carefully before beginning installation.
- Wear appropriate personal protective equipment, including safety glasses and gloves.
- Ensure the vehicle is securely supported on a level surface before working underneath it.
- Do not exceed the maximum towing capacity of 6000 lbs (2721 kg) for this hitch or the towing capacity of your vehicle, whichever is lower.
- Regularly inspect the hitch for signs of wear, damage, or corrosion. Replace damaged components immediately.
- Ensure all bolts are tightened to the specified torque values.
- Keep children and pets away from the work area.

3. PACKAGE CONTENTS

Verify that all components are present before beginning installation:

- VEVOR Class 3 Trailer Hitch (Main Assembly)

- 6 x M12 Anti-Slip Washers
- 6 x M12 Flange Nuts
- 6 x M12-1.25x35 10.9 Grade Outer Hex Bolts
- 8 x M12 Flat Washers
- 8 x M12x30 Bolts
- Instruction Manual

Q345B Steel Construction

Stands up to wear and rust

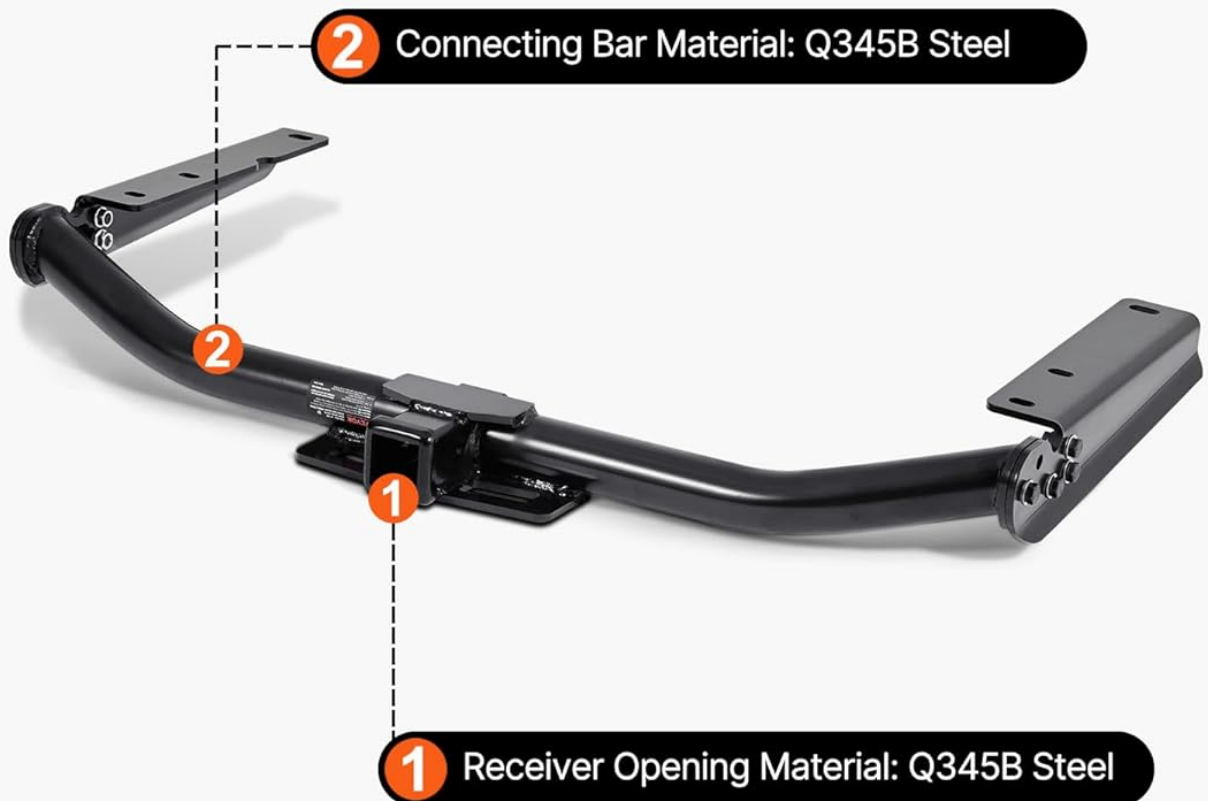


Image: Included hardware and hitch components. This image shows the main hitch assembly along with various bolts, washers, and nuts required for installation.

4. SETUP AND INSTALLATION

This VEVOR trailer hitch features a 3-piece split design for easier handling and installation. It is designed for direct bolt-on installation on 2014-2019 Toyota Highlander models.

4.1 Pre-Installation Steps

1. Park the vehicle on a level surface and engage the parking brake.
2. If necessary, raise the vehicle using a lift or jack stands to provide adequate working space underneath.
3. Locate the existing mounting points on the vehicle's frame. These are typically pre-drilled holes.
4. Clean any dirt or debris from the mounting areas.



Image: Comparison of split design versus one-piece hitch. This image illustrates how the 3-piece split design of the VEVOR hitch allows for easier, potentially single-person installation compared to heavier one-piece designs.

4.2 Installation Procedure

1. Assemble the main hitch receiver section.
2. Attach each wing (side bracket) separately to the vehicle's frame using the provided M12-1.25x35 hex bolts, anti-slip washers, and flange nuts. Hand-tighten only at this stage.
3. Align the main receiver section with the attached wings and secure it using the M12x30 bolts and M12 flat washers.
4. Once all bolts are in place and the hitch is properly aligned, progressively tighten all fasteners to the manufacturer's specified torque values. Refer to your vehicle's service manual for specific torque specifications for frame attachments, or consult a professional.
5. Double-check all connections to ensure they are secure.



Designed For 2014-2019 Toyota Highlander

Standard Trailer Hitch Receiver

Easy Installation



Sturdy Material



Strong Towing Capacity



Multi-functional Use

Image: VEVOR trailer hitch installed on a 2014-2019 Toyota Highlander. This image shows the hitch receiver mounted securely to the rear of the vehicle, highlighting its precise fit.

5. OPERATING INSTRUCTIONS

The VEVOR Class 3 Trailer Hitch is designed to accommodate various towing and carrying accessories.

5.1 Connecting Accessories

- Insert your desired accessory (e.g., ball mount, cargo carrier, bike rack, tow hook) into the 2-inch receiver opening.
- Align the accessory's pinhole with the hitch receiver's pinhole.
- Insert a hitch pin (not included) through both holes and secure it with a clip or lock.
- Ensure the accessory is firmly seated and does not wobble excessively.

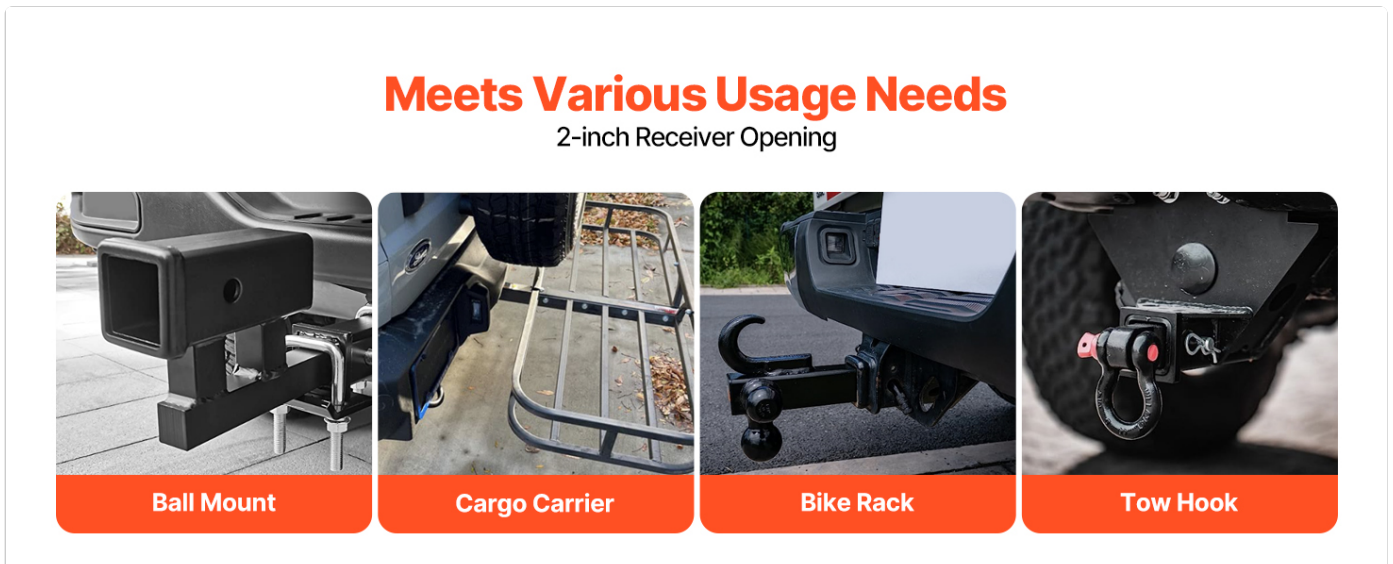


Image: Examples of accessories compatible with the 2-inch receiver. This image displays a ball mount, cargo carrier, bike rack, and tow hook, demonstrating the versatility of the hitch.

5.2 Towing Capacity

This hitch has a maximum towing capacity of 6000 lbs (2721 kg). Always adhere to this limit and your vehicle's manufacturer-specified towing capacity, using the lower of the two values. Overloading can lead to loss of control, equipment failure, and serious accidents.



Image: Illustration of a vehicle towing a camper, indicating the 6000 lbs weight carrying capacity of the hitch. This image visually represents the towing capability of the product.

6. MAINTENANCE

Regular maintenance ensures the longevity and safe operation of your trailer hitch.

- **Visual Inspection:** Before each use, visually inspect the hitch for any signs of damage, cracks, bends, or excessive wear. Check for loose or missing fasteners.
- **Corrosion Protection:** The hitch is powder-coated for rust resistance. If the coating is chipped or damaged, clean the area and apply a rust-inhibiting paint to prevent corrosion.
- **Fastener Check:** Periodically check all bolts and nuts for tightness. Re-torque to specifications if necessary.
- **Cleaning:** Clean the hitch regularly to remove dirt, salt, and road grime, especially after exposure to harsh weather conditions.

7. TROUBLESHOOTING

Problem	Possible Cause	Solution
Hitch appears loose after installation.	Fasteners not tightened to specifications.	Re-check and tighten all bolts and nuts to the recommended torque values.
Accessory does not fit into receiver.	Incorrect accessory size or debris in receiver.	Ensure accessory is a 2-inch square receiver type. Clean inside the receiver opening.
Rust spots appearing on hitch.	Damage to powder coating, exposure to elements.	Clean affected area, sand lightly, and apply rust-inhibiting paint.
Unusual noises during towing.	Loose connections, worn components, or improper loading.	Inspect all hitch connections and accessory attachments. Ensure load is properly balanced and within capacity.

8. SPECIFICATIONS

Feature	Detail
---------	--------

Feature	Detail
Model Number	NT-1602
Product Material	Q345B Steel
Connector Interface Size	2 x 2 inches (52 x 52 mm)
Product Net Weight	47.4 lbs (21.5 kg)
Compatible Models	Toyota Highlander (2014-2019)
Product Dimensions (Assembled)	46.65 x 24.8 x 6.1 inches (1185 x 630 x 155 mm)
Maximum Towing Capacity	6000 lbs (2721 kg)
Finish Type	Powder Coated

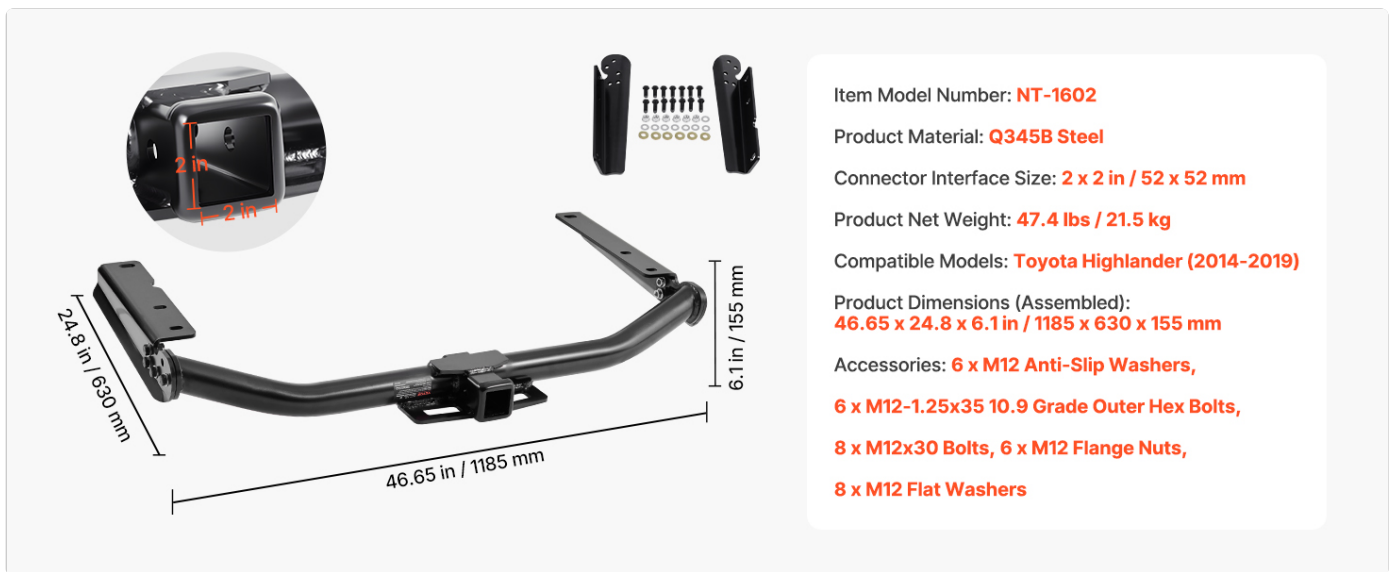


Image: Diagram showing the dimensions and key specifications of the VEVOR trailer hitch. This image provides a visual representation of the product's measurements and material.

9. WARRANTY AND SUPPORT

For warranty information or technical support, please refer to the contact details provided with your purchase documentation or visit the official VEVOR website. Keep your purchase receipt as proof of purchase for any warranty claims.

Customer Support: If you encounter any issues or have questions regarding your VEVOR Class 3 Trailer Hitch, please contact VEVOR customer service. Contact information can typically be found on the VEVOR brand store page or included in your product packaging.

