

Fanvil i33V

Fanvil i33V Video Door Phone User Manual

Model: i33V

1. INTRODUCTION

Thank you for choosing the Fanvil i33V Video Door Phone. This manual provides essential information for the proper installation, operation, and maintenance of your device. Please read this manual thoroughly before using the product to ensure optimal performance and safety.

The Fanvil i33V is a robust video door phone designed for outdoor use, featuring 2 SIP lines, an LCD display, and an IP65 rating for weather resistance. It combines security and communication functionalities for various environments.

2. PRODUCT OVERVIEW

The Fanvil i33V Video Door Phone integrates a high-definition camera, a numeric keypad, an LCD screen, and a card reader into a durable stainless steel housing. It supports SIP protocol for seamless integration with IP telephony systems.





Figure 2.1: Front view of the Fanvil i33V Video Door Phone. This image displays the device's front panel, including the integrated camera, speaker grille, microphone, LCD screen, numeric keypad, and card reader area. The keypad features standard numbers 0-9, asterisk (*), hash (#), and function keys C (Dial), K (Password Mode), and B (Backspace).

Key Features:

- **2 SIP Lines:** Supports two independent SIP accounts for flexible communication.
- **LCD Display:** Provides visual feedback for status, dialing, and messages.
- **IP65 Outdoor Rated:** Offers protection against dust and water jets, suitable for outdoor installation.
- **Stainless Steel Material:** Ensures durability and resistance to vandalism.
- **Integrated Card Reader:** Allows access control via RFID cards.
- **HD Camera:** For clear video communication.

3. SETUP AND INSTALLATION

Proper installation is crucial for the performance and longevity of your Fanvil i33V. It is recommended that installation be performed by a qualified technician.

3.1 Mounting the Device

The i33V is designed for wall mounting. Ensure the mounting surface is stable and can support the device's weight. Refer to the mounting template (if provided with the product packaging) for precise drilling locations.



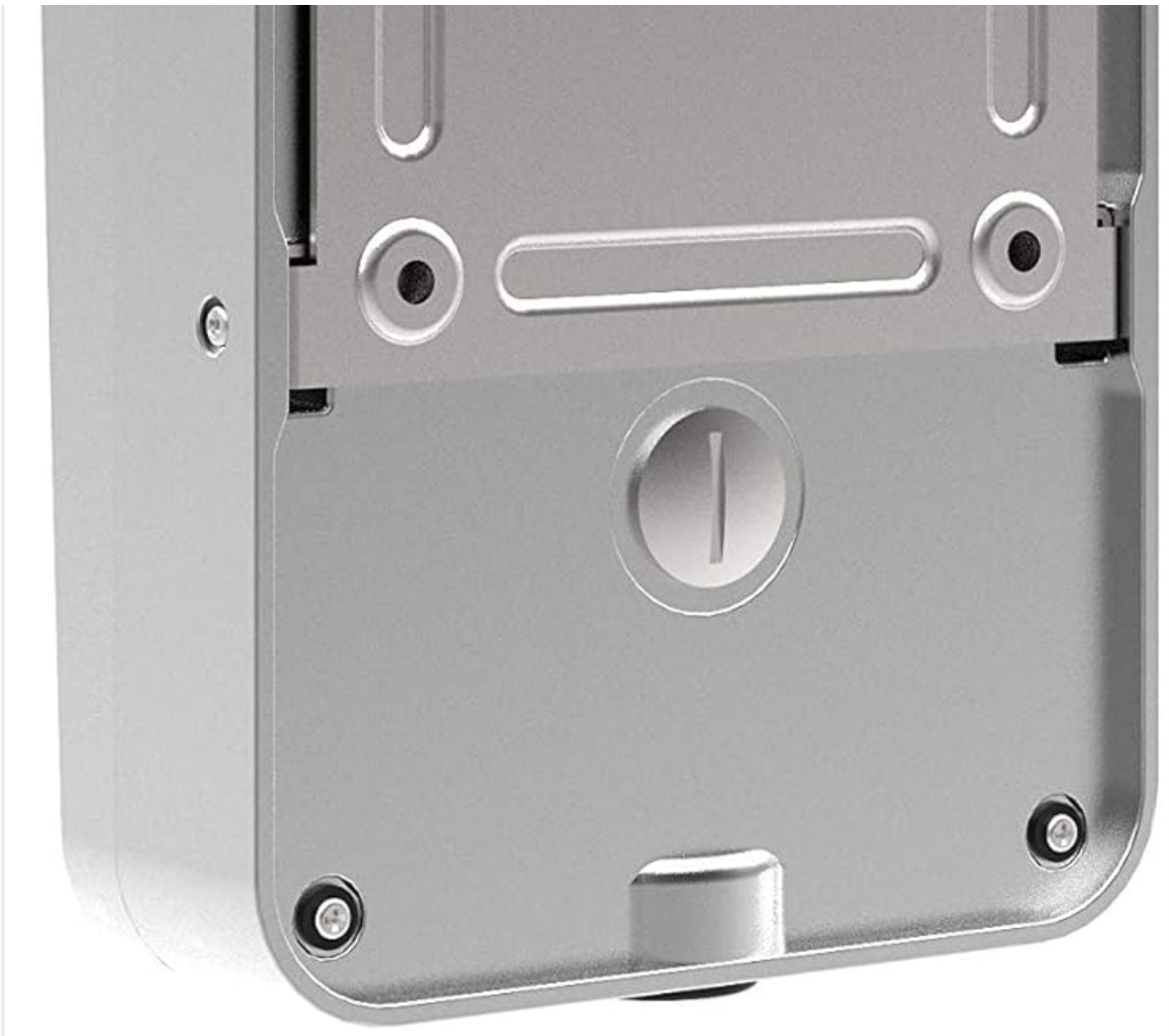


Figure 3.1: Rear view of the Fanvil i33V Video Door Phone. This image illustrates the back panel of the device, highlighting the screw holes for secure mounting and the designated area for cable routing and connections.

3.2 Wiring and Connections

The i33V requires a corded electric power source and network connectivity. Connect the Ethernet cable for network access and Power over Ethernet (PoE) if supported, or use a separate power adapter. Ensure all connections are secure and properly sealed, especially for outdoor installations, to maintain the IP65 rating.

- **Network Cable:** Connect to your local area network (LAN) for SIP communication.
- **Power:** Use a compatible power adapter or PoE switch.
- **Door Lock Control:** Connect to an electronic door lock system if access control functionality is desired.

After physical installation, configure the device's network settings and SIP accounts via its web interface. Consult the Fanvil i33V Administrator Guide for detailed configuration steps.

4. OPERATING INSTRUCTIONS

This section outlines the basic operation of your Fanvil i33V Video Door Phone.

4.1 Making a Call

1. Enter the desired extension or phone number using the numeric keypad.
2. Press the 'C' (Dial Key) button to initiate the call.
3. The LCD display will show the call status.

4.2 Answering a Call

When an incoming call is received, the device will ring. If configured, the video feed may automatically activate. Answer the call from your indoor station or SIP phone.

4.3 Using Password Mode

To enter a password for access control:

1. Press the 'K' (Password Mode) button.
2. Enter your password using the numeric keypad.
3. Press the '#' key to confirm the password.

4.4 Using the Card Reader

To gain access using an RFID card:

1. Hold your registered RFID card over the 'CARD' area at the bottom of the device.
2. The device will emit an audible confirmation and, if authorized, trigger the door lock.

4.5 Correcting Entries

If you make a mistake while entering numbers or a password, press the 'B' (Backspace Key) button to delete the last entered digit.

5. MAINTENANCE

Regular maintenance helps ensure the longevity and optimal performance of your Fanvil i33V.

5.1 Cleaning

- Wipe the stainless steel surface with a soft, damp cloth.
- Avoid using abrasive cleaners, solvents, or harsh chemicals, as these can damage the finish or electronic components.
- Gently clean the camera lens and LCD display with a microfiber cloth to prevent scratches.

5.2 Environmental Considerations

While the i33V is IP65 rated for outdoor use, extreme conditions can still affect its performance. Ensure proper drainage around the device and avoid direct, prolonged exposure to intense sunlight or heavy precipitation if possible.

6. TROUBLESHOOTING

If you encounter issues with your Fanvil i33V, refer to the following common troubleshooting steps:

- **No Power:** Check the power connection. If using PoE, ensure the PoE switch or injector is functioning correctly. Verify the power adapter (if used) is properly connected and supplying power.
- **No Network Connectivity:** Check the Ethernet cable connection. Verify network settings via the device's web interface. Ensure your network infrastructure is operational.
- **No Audio/Video During Call:** Check network connectivity and SIP registration status. Ensure microphone and speaker settings are correctly configured in the device's web interface. Verify camera settings.
- **Keypad Not Responding:** Ensure the device has power. If specific keys are unresponsive, contact technical

support.

- **Card Reader Not Working:** Ensure the RFID card is registered in the device's access control settings. Verify the card type is compatible.
- **Door Lock Not Activating:** Check the wiring between the i33V and the electronic door lock. Verify the access control settings and permissions in the device's web interface.

If these steps do not resolve the issue, please consult the Fanvil i33V Administrator Guide or contact Fanvil technical support.

7. SPECIFICATIONS

The following are the technical specifications for the Fanvil i33V Video Door Phone:

Feature	Detail
Brand	Fanvil
Model	i33V
Telephone Type	Corded
Material	Stainless Steel
Power Source	Corded Electric
IP Rating	IP65 (Dust and Water Jet Resistant)
SIP Lines	2
Display	LCD
Manufacturer	Fanvil
UPC	724129306484
ASIN	B0FDXLRFTS
Date First Available	June 20, 2025



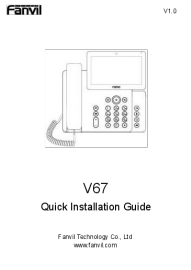
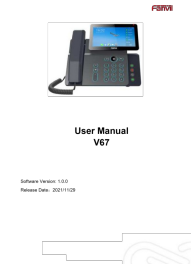

8. WARRANTY AND SUPPORT

The Fanvil i33V Video Door Phone is covered by a manufacturer's warranty. For specific warranty terms and conditions, please refer to the documentation provided with your purchase or visit the official Fanvil website.

For technical assistance, product inquiries, or warranty claims, please contact Fanvil customer support directly. Contact information can typically be found on the manufacturer's website or in your product packaging.



Related Documents - i33V

	<p>Fanvil i30 IP Door Phone Quick Installation Guide</p> <p>This guide provides comprehensive instructions for the installation and basic configuration of the Fanvil i30 IP Door Phone. It covers package contents, physical specifications, detailed installation steps, network searching methods, SIP account setup, and various door unlocking configurations including local password, private access code, remote password, and RFID cards.</p>
	<p>Fanvil i60 & i60K SIP Video Door Phone User Manual</p> <p>Comprehensive user manual for the Fanvil i60 and i60K SIP audio and video intercoms. Learn about installation, configuration, features, and troubleshooting for these advanced video door phones.</p>
	<p>Fanvil V67 Quick Installation Guide</p> <p>Get started quickly with the Fanvil V67 IP Phone. This guide provides essential information on packaging, installation, configuration, call features, connectivity options like Bluetooth and WiFi, and regulatory compliance for the Fanvil V67 model.</p>
	<p>Fanvil V67 User Manual</p> <p>Comprehensive user manual for the Fanvil V67 enterprise android network phone, covering installation, features, settings, and troubleshooting.</p>
	<p>Fanvil i32V Video Door Phone Quick Installation Guide</p> <p>A comprehensive guide to installing and configuring the Fanvil i32V Video Door Phone, covering package contents, physical specifications, interface descriptions, wiring instructions, installation steps, device searching, and IP door phone settings including SIP accounts and door unlocking.</p>

i66&i67

Fanvil

Quick Installation Guide



i66

i67

www.fanvil.com

[Fanvil i66 & i67 Quick Installation Guide: Setup, Wiring, and Configuration](#)

This guide provides detailed instructions for installing and configuring the Fanvil i66 and i67 video door phones. It covers package contents, physical specifications, interface connections, wiring diagrams, installation steps, IP address configuration, access control settings, and notes on face recognition.