

GKU D200

GKU 4K Dash Cam D200 User Manual

1. PRODUCT OVERVIEW

The GKU 4K Dash Cam D200 is designed to provide high-resolution video recording for your vehicle. It features Ultra HD 2160P resolution, a 170° wide-angle lens, and advanced night vision capabilities with WDR technology. Integrated Wi-Fi allows for easy smartphone connectivity and app control. Key safety features include a 24-hour parking monitor, G-Sensor for impact detection, and seamless loop recording. The compact design ensures it does not obstruct your view while driving.



Figure 1: GPU 4K Dash Cam D200 with smartphone app interface and included 64GB SD card.

2. What's in the Box

Please check the contents of your package to ensure all items are present:

- 1 x GPU 4K D200 Front Camera
- 1 x 64GB SD Card
- 1 x Car Charger (9.84ft)
- 2 x 3M Adhesive Mounts
- 2 x Electrostatic Films
- 1 x Crowbar Tool
- 1 x User Manual

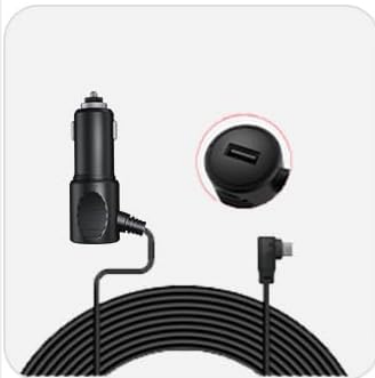
What's in the box



D200 dash cam



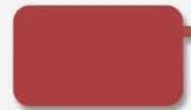
Package box



Car charger (9.84ft)



64GB SD card



3M adhesive x 1



Electrostatic film x 2



Manual



Crowbar

Figure 2: Contents of the GKU 4K Dash Cam D200 package.

3. SETUP AND INSTALLATION

3.1 SD Card Installation

1. Locate the SD card slot on the side of the dash cam.
2. Insert the provided 64GB SD card into the slot until it clicks into place. Ensure the card is inserted correctly with the contacts facing the camera lens.
3. It is recommended to format the SD card within the dash cam settings before first use.

Mini Size, 4K Clarity



4K UHD



WiFi & APP



Free
64GB Card



Parking
Monitor



Loop
Recording



G-Sensor



Super
Capacitor



Voice
Broadcast

Figure 3: The included 64GB SD card.

3.2 Mounting the Dash Cam

1. Clean the area on your windshield where you intend to mount the dash cam.
2. Apply one of the electrostatic films to the cleaned area. This helps protect your windshield and makes removal easier.
3. Attach a 3M adhesive mount to the dash cam's bracket.
4. Press the dash cam firmly onto the electrostatic film on your windshield, ideally behind the rearview mirror to avoid obstructing your view.
5. Adjust the camera angle using the 140° adjustable bracket to ensure optimal road coverage.

Wifi Connection & APP Control

Conveniently download the recordings for sharing and review on your phone App.



View



Playback



Share



Download



Figure 4: Dash cam mounted on the windshield.

3.3 Power Connection

Connect the dash cam to your vehicle's power source using the provided car charger. Route the cable neatly along the windshield and dashboard to avoid interference with driving. For 24-hour parking monitoring, a hardwire kit (not included) is required to connect directly to your car's battery.

Mini but Powerful

Compact size and high security.



Figure 5: Car charger connection.

4. OPERATING INSTRUCTIONS

4.1 Basic Recording

Once powered on, the dash cam will automatically begin recording. It utilizes loop recording, which continuously records video in segments (e.g., 1, 3, or 5 minutes). When the SD card is full, the oldest unlocked files are overwritten by new recordings.

24H Parking Monitor

Note: Hardwire Kit Required(Not included)

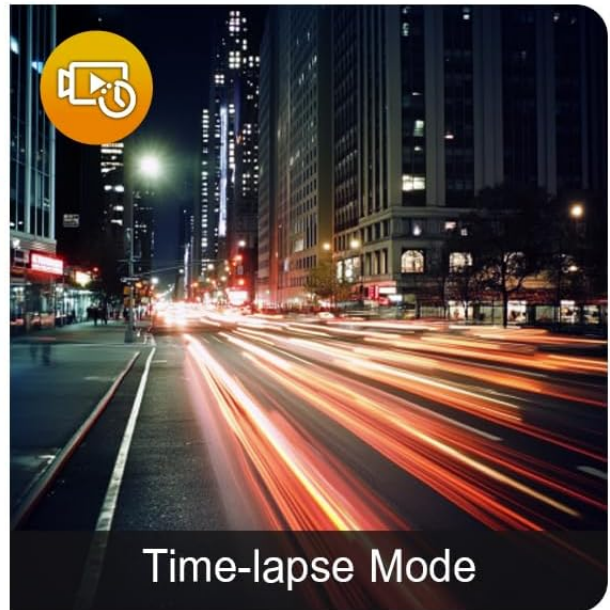
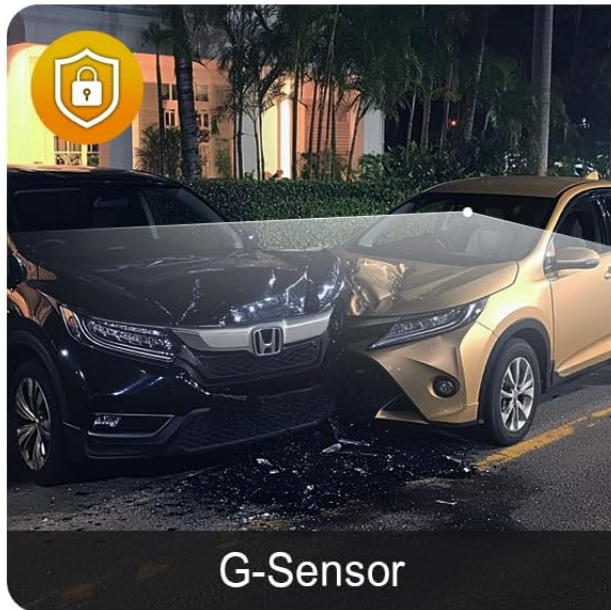


Figure 6: Loop Recording in action.

4.2 Wi-Fi & App Control

The GKU D200 features built-in Wi-Fi for seamless connection to your smartphone via a dedicated app. This allows you to:

- View live footage from the dash cam.
- Playback recorded videos.
- Download videos directly to your phone.
- Adjust dash cam settings.

Download the official GKU app from your smartphone's app store and follow the in-app instructions to connect to your dash cam's Wi-Fi network.

Capture Every Detail in 4K

Captures more details from street signs, license plates with Wide Angle.



4K UHD Resolution



Smooth 25fps



Wide Angle



Figure 7: Wi-Fi connectivity and app control.

4.3 G-Sensor & Collision Lock

The integrated G-Sensor detects sudden impacts or collisions. When an event is detected, the dash cam automatically locks the current recording segment, preventing it from being overwritten by loop recording. This ensures critical footage is preserved.

Capture Every Event

Automatically locks videos upon collision, ensuring critical footage is protected. New recordings seamlessly overwrite older ones, while locked videos remain secure.



Figure 8: G-Sensor collision lock feature.

4.4 24-Hour Parking Monitor

With the 24-hour parking monitor feature, the dash cam can continue to record even when your vehicle is parked. It uses impact detection to automatically record footage if a collision or significant vibration is detected. This feature requires a hardwire kit (sold separately) for continuous power supply.

Super Night Vision

Capture clear details even at night or in low-light



F1.8 Aperture



WDR



6 Glass Lens

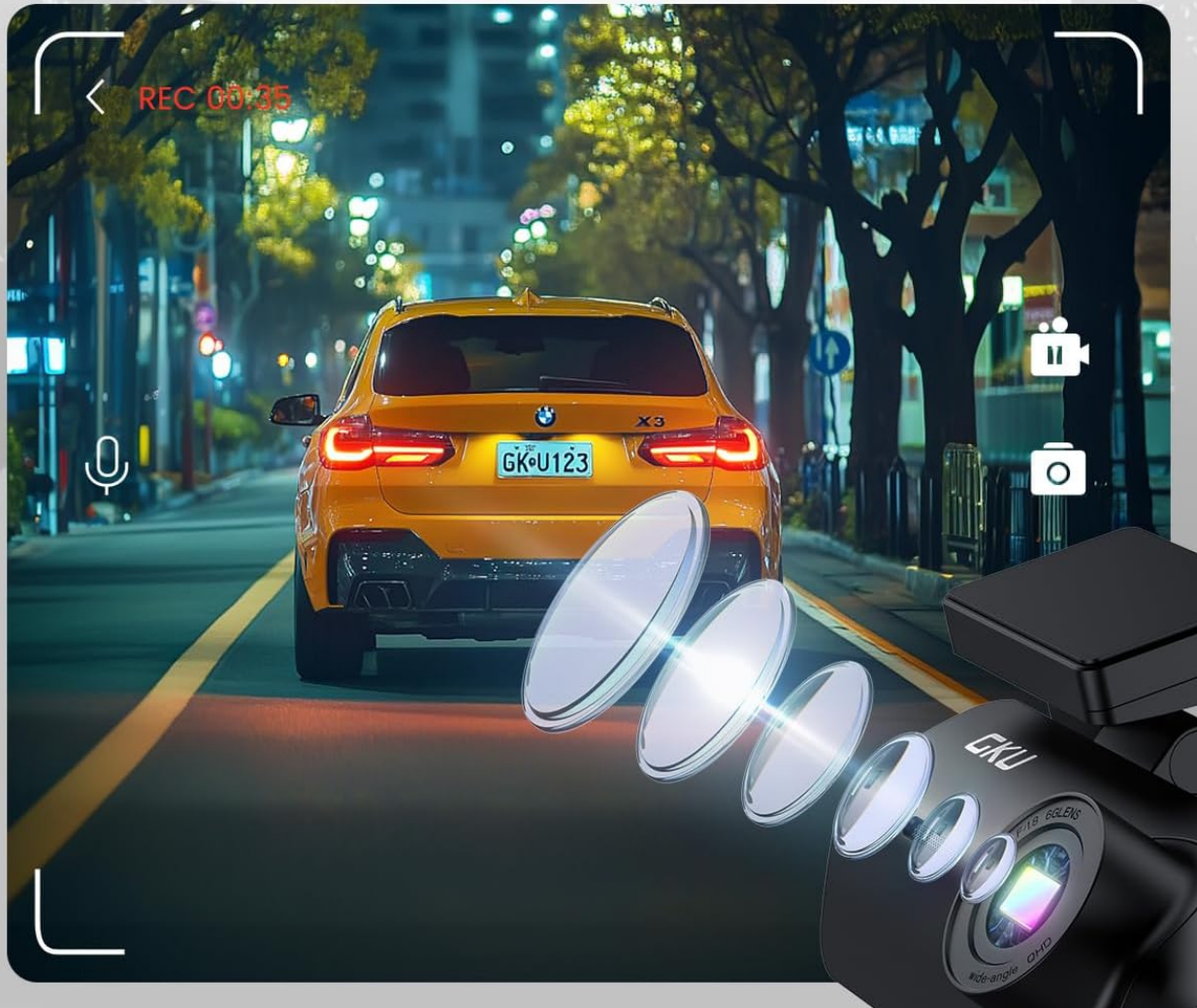


Figure 9: 24-Hour Parking Monitor.

4.5 Night Vision

The GKU D200 is equipped with advanced night vision technology, including an F1.8 aperture and Wide Dynamic Range (WDR). This allows the camera to automatically balance exposure and enhance clarity in low-light conditions, ensuring clear recordings during nighttime driving.

Super Night Vision

Illuminate the night with superior 4K clarity, record license plates and road signs even in challenging low-light conditions.



F1.8 Aperture



6-layer Glass



WDR

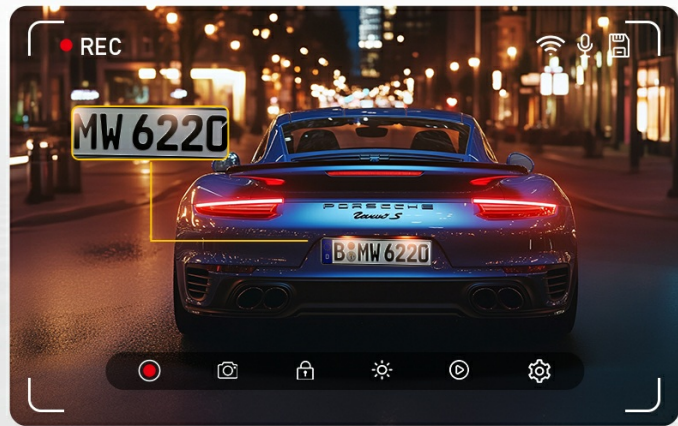


Figure 10: Enhanced night vision capabilities.

5. MAINTENANCE

5.1 SD Card Management

Regularly format your SD card (at least once a month) to ensure optimal performance and prevent data corruption. This can typically be done through the dash cam's settings via the smartphone app.

5.2 General Care

- Keep the camera lens clean using a soft, lint-free cloth.
- Avoid exposing the dash cam to extreme temperatures for prolonged periods. The device is designed to withstand temperatures from -4°F (-20°C) to 158°F (70°C).
- Do not attempt to disassemble or repair the dash cam yourself, as this will void the warranty.

6. TROUBLESHOOTING

Common Issues and Solutions

- **Dash Cam Not Powering On:** Check the power connection and ensure the car charger is securely plugged into both the dash cam and the vehicle's power outlet. Verify the vehicle's power outlet is functional.
- **Recording Stops or Freezes:** Format the SD card. If the issue persists, try a different high-speed (Class 10 or U3) SD card. Ensure the firmware is up to date via the app.
- **Wi-Fi Disconnection:** Ensure your smartphone is within close proximity to the dash cam. Restart both the dash cam and your phone. Reconnect through the GKU app.
- **Poor Video Quality:** Clean the camera lens. Ensure the protective film has been removed from the lens. Check that the dash cam is set to 4K resolution in the app settings.
- **Parking Monitor Not Working:** Confirm that the parking monitor feature is enabled in the app settings. Remember that a hardwire kit (not included) is required for continuous 24-hour parking surveillance.

7. SPECIFICATIONS

Feature	Detail
Model Name	D200

Video Capture Resolution	4K (UHD 2160P)
Field Of View	170 Degrees
Connectivity Technology	Wi-Fi
Special Features	Night Vision, Built-In WiFi, App Control, G-sensor, Loop Recording, Parking Monitor, Free 64G SD card, Supports 512GB Max, Detachable Compact Design
Mounting Type	Windshield Mount
Product Dimensions	1.97 x 1.18 x 1.18 inches
Item Weight	10.6 ounces
Batteries	1 Lithium Metal battery required

8. WARRANTY AND CUSTOMER SUPPORT

8.1 Warranty Information


GKU provides a 12-month warranty for the Dash Cam D200, with an additional 12 months available upon official registration with GKU. This ensures a total of 24 months of coverage.






8.2 Customer Support

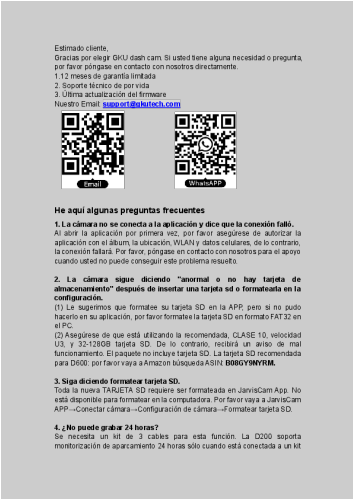
For any questions, technical assistance, or warranty claims, please contact GKU customer support:

- **Email:** support@gkutech.com
- 24/7 customer support is available to provide professional and comprehensive assistance.

Related Documents - D200

 <p>GKU D600</p> <p>USER MANUAL D600 4K DASH CAM</p>	<p>GKU D600 4K Dash Cam User Manual</p> <p>User manual for the GKU D600 4K Dash Cam, covering installation, app usage, features, and specifications.</p>
-----------------------------------------------------------------------------------------------------------------------------------------------------------	--------------------------------------------------------------------------------------------------------------------------------------------------------------------------

	<p>GKU D200 2.5K Dash Cam User Manual</p> <p>Comprehensive user manual for the GKU D200 2.5K Dash Cam, covering installation, operation, features, app connectivity, specifications, and troubleshooting. Includes warranty information and regulatory compliance statements.</p>
	<p>GKU Dash Cam D600: Frequently Asked Questions and Troubleshooting</p> <p>Comprehensive guide to GKU Dash Cam D600, covering common issues, setup, and features. Learn about connectivity, SD card errors, video playback, and parking monitoring.</p>
	<p>GKU D200 2.5K Dash Cam User Manual</p> <p>User manual for the GKU D200 2.5K Dash Cam, detailing installation, operation, app connectivity, and specifications. Learn about recording, parking monitoring, and WiFi features.</p>
	<p>GKU Dash Cam Support FAQ: Installation, Features, and Troubleshooting</p> <p>Comprehensive FAQ guide for GKU dash cameras, covering installation of hardwire kits and rear cameras, troubleshooting common issues with screen, GPS, and Wi-Fi, and usage tips for parking monitoring and reversing functions. Get support from GKU.</p>
	<p>GKU M12 Pro User Manual: 4K Mirror Dash Cam Installation, Features & FAQ</p> <p>Comprehensive user manual for the GKU M12 Pro 4K+2.5K Mirror Dash Cam. Learn about installation, features, app usage, troubleshooting, and product specifications.</p>



[GKU Dash Cam D600: Frequently Asked Questions and Troubleshooting](#)

Comprehensive guide to GKU Dash Cam D600, covering common issues, setup, and features. Learn about connectivity, SD card errors, video playback, and parking monitoring.

lang:es score:19 filesize: 191.71 K page_count: 8 document date: 2023-07-06



[\[pdf\] User Manual](#)

GKU D200 90x110mm V1 03 DownloadUser Manual gkutechGKU D200 User Manualcdn shopify s files 1 0637 6135 0883 v 1712905027 |||

...

lang:es score:19 filesize: 7.9 M page_count: 88 document date: 2023-10-18



[GKU D200 2.5K Dash Cam User Manual](#)

Comprehensive user manual for the GKU D200 2.5K Dash Cam, covering installation, operation, features, app connectivity, specifications, and troubleshooting. Includes warranty information and regulatory compliance statements.

lang:es **score:18** filesize: 3.95 M page_count: 87 document date: 2023-07-14



[\[pdf\]](#)

GKU D200 17 Manuale utente Dash Cam WiFi Telecamera per Auto Full HD 2 5K 1600P e Super Visione Notturna WDR Design Ultracompatto Grandangolo di 170° G Sensor Registrazione in Loop 24H Monitor Parcheggio Max 128G Amazon it Moto C1lednBMALL m media amazon images I |||

...

lang:es **score:13** filesize: 4.73 M page_count: 56 document date: 2022-10-20



[\[pdf\]](#) User Manual

GKU D200 V1 02 Z User Manual 2.5K WiFi Dash Cam Front Car Camera with 170° Wide View Hidden Design Night Vision G Sensor WDR Loop Recording Parking Monitor Supports 256GB Max Amazon au Electronics C1iSqzfy 5L m media amazon images I |||

...

lang:es score:13 filesize: 6.9 M page_count: 88 document date: 2023-07-11



[GKU D200 2.5K Dash Cam User Manual | Installation & Operation Guide](#)

Comprehensive user manual for the GKU D200 2.5K Dash Cam. Learn how to install, operate, and troubleshoot your dash cam for optimal performance and safety.

lang:es score:13 filesize: 6.72 M page_count: 72 document date: 2023-03-31



[GKU D200 2.5K Dash Cam User Manual](#)

User manual for the GKU D200 2.5K Dash Cam, detailing installation, operation, app connectivity, and specifications. Learn about recording, parking monitoring, and WiFi features.

lang:es score:11 filesize: 4.65 M page_count: 56 document date: 2022-08-26