

TABWEE Tabwee T90

TABWEE T90 Android 16 Tablet User Manual

Model: Tabwee T90 | Brand: TABWEE

1. INTRODUCTION AND OVERVIEW

Welcome to the user manual for your new TABWEE T90 Android 16 Tablet. This device combines cutting-edge technology with user-friendly design, featuring the world's first Android 16 operating system and integrated Gemini AI 2.0. With an 11-inch Full HD display, 24GB RAM, 128GB internal storage expandable up to 2TB, and an 8000mAh battery, the T90 is designed for both productivity and entertainment. This manual provides essential information for setup, operation, maintenance, and troubleshooting to ensure you get the most out of your tablet.

2. WHAT'S IN THE BOX

Upon unboxing your TABWEE T90 tablet, please verify that all the following components are included:

- TABWEE T90 Tablet
- Bluetooth Keyboard
- Wireless Mouse
- Stylus Pen
- Protective Case
- AC Adapter
- USB Cable
- SIM Card Pin
- User Manual
- Protective Film (pre-applied and one spare)



Image: All components included in the TABWEE T90 package.

3. SETUP

3.1 Initial Charging

Before first use, fully charge your TABWEE T90 tablet using the provided AC adapter and USB cable. The charging port is located on the side of the tablet. A full charge typically takes approximately 2-3 hours.

3.2 Powering On/Off

- **To Power On:** Press and hold the Power button (located on the top edge) for a few seconds until the TABWEE logo appears.
- **To Power Off:** Press and hold the Power button until the power options menu appears. Select "Power off" and confirm.
- **To Restart:** From the power options menu, select "Restart".

3.3 Initial Android Setup

Upon first power-on, the tablet will guide you through the Android 16 setup process. Follow the on-screen prompts to:

- Select your language and region.
- Connect to a Wi-Fi network.
- Sign in with your Google account or create a new one.
- Set up screen lock (PIN, pattern, password, or facial recognition).
- Review and accept terms and conditions.

3.4 Connecting Accessories

Your TABWEE T90 comes with a Bluetooth keyboard, mouse, and stylus for enhanced productivity.

- **Bluetooth Keyboard/Mouse:** Turn on the keyboard/mouse and put it into pairing mode (refer to their individual manuals if needed). On your tablet, go to *Settings > Connected devices > Pair new device* and select the keyboard/mouse from the list.
- **Stylus:** The stylus is generally plug-and-play for basic touch input. For advanced features, ensure it is charged (if applicable) and compatible with the tablet's touch screen technology.

3.5 Expanding RAM

The tablet supports RAM expansion. To utilize the full 24GB (8GB physical + 16GB virtual boost), navigate to *Settings* and locate the option to expand RAM.

4. OPERATING INSTRUCTIONS

4.1 Android 16 and Gemini AI 2.0

The TABWEE T90 runs on the advanced Android 16 operating system, enhanced with Gemini AI 2.0 for a smarter and more intuitive user experience.

- **Interactive System:** Enjoy smoother interactions and real-time information display.
- **Video Call Enhancements:** Utilize one-tap features like background blur and portrait lighting for professional video calls.
- **Gemini AI 2.0:** This AI optimizes workflows, allowing for tasks such as transforming voice notes into formatted reports and enhancing low-light photos automatically.



Image: Key features of the Android 16 operating system.

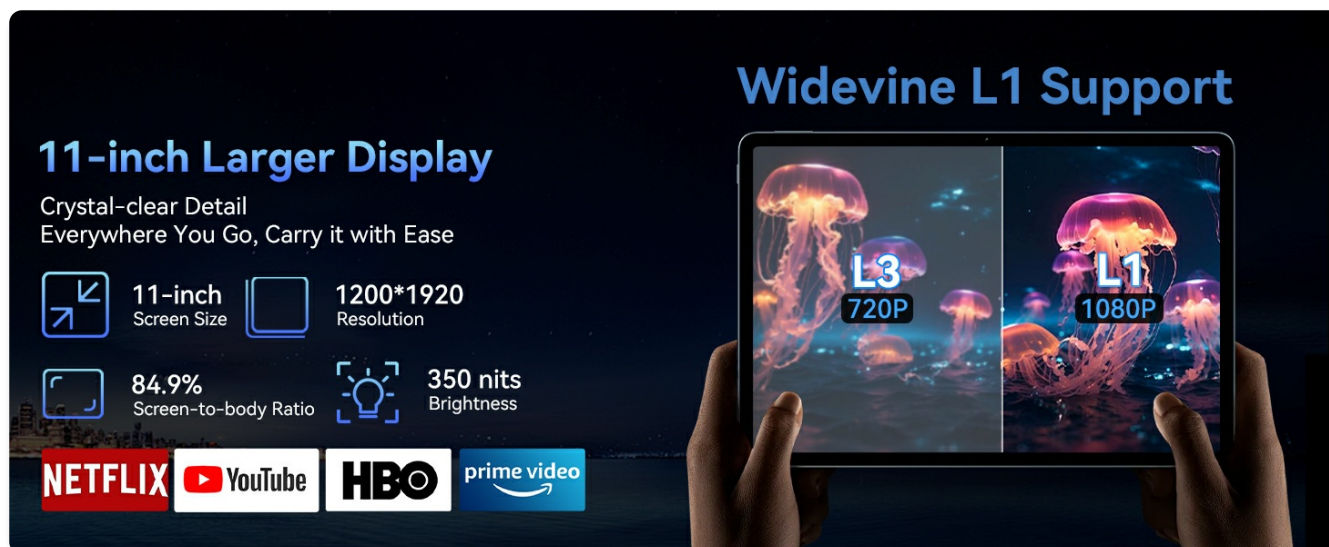


Image: Overview of Gemini AI functionalities.

4.2 Display Features

The 11-inch Full HD (1920x1200) display offers a vibrant visual experience. It features a 120Hz touch sampling rate for smooth navigation and gaming, along with anti-reflective and anti-fingerprint properties for comfortable outdoor use.

- **Widevine L1 Support:** Enjoy high-definition streaming from platforms like Netflix, Disney+, YouTube, HBO, and Prime Video.

Enjoy Videos on an 11-Inch FHD Large Screen

11-inch
Screen Size

FHD
1200 × 1920 Resolution

16:10
Golden Ratio

350 nits
Brightness

Widevine L1 Supported

NETFLIX

YouTube

HBO

prime video

Image: The 11-inch Full HD display in use.

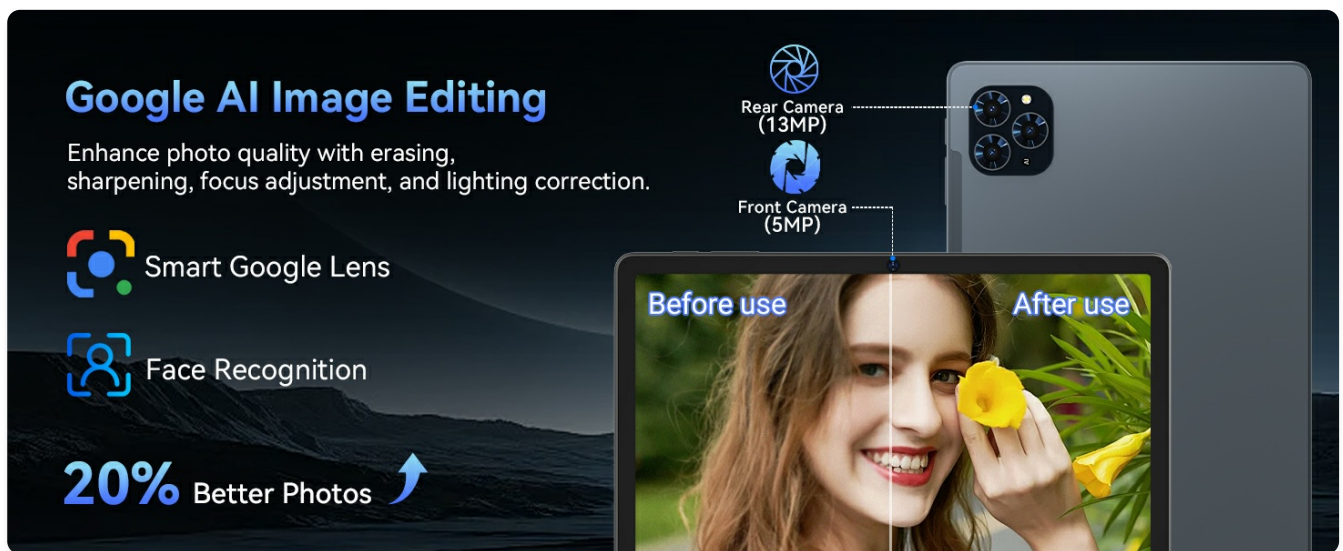


Image: Widevine L1 support for high-definition content.

4.3 Performance and Storage

The TABWEE T90 is powered by an Octa-core Unisoc T615 processor, ensuring smooth performance for multitasking, gaming, and media consumption. It features 24GB of RAM (8GB physical + 16GB virtual) and 128GB of internal storage, expandable up to 2TB via a microSD card.

Equipped with an 8-Core High-Performance CPU

The tablet with the T615 delivers excellent processing power for smooth playback of 4K videos and Full HD content. It also provides high graphics performance for gaming and real-time tasks.



2× Cortex-A75 @ 2.0GHz
6× Cortex-A55 @ 1.8GHz



Mali-G52 MP1 GPU



12nm Low
Power Consumption

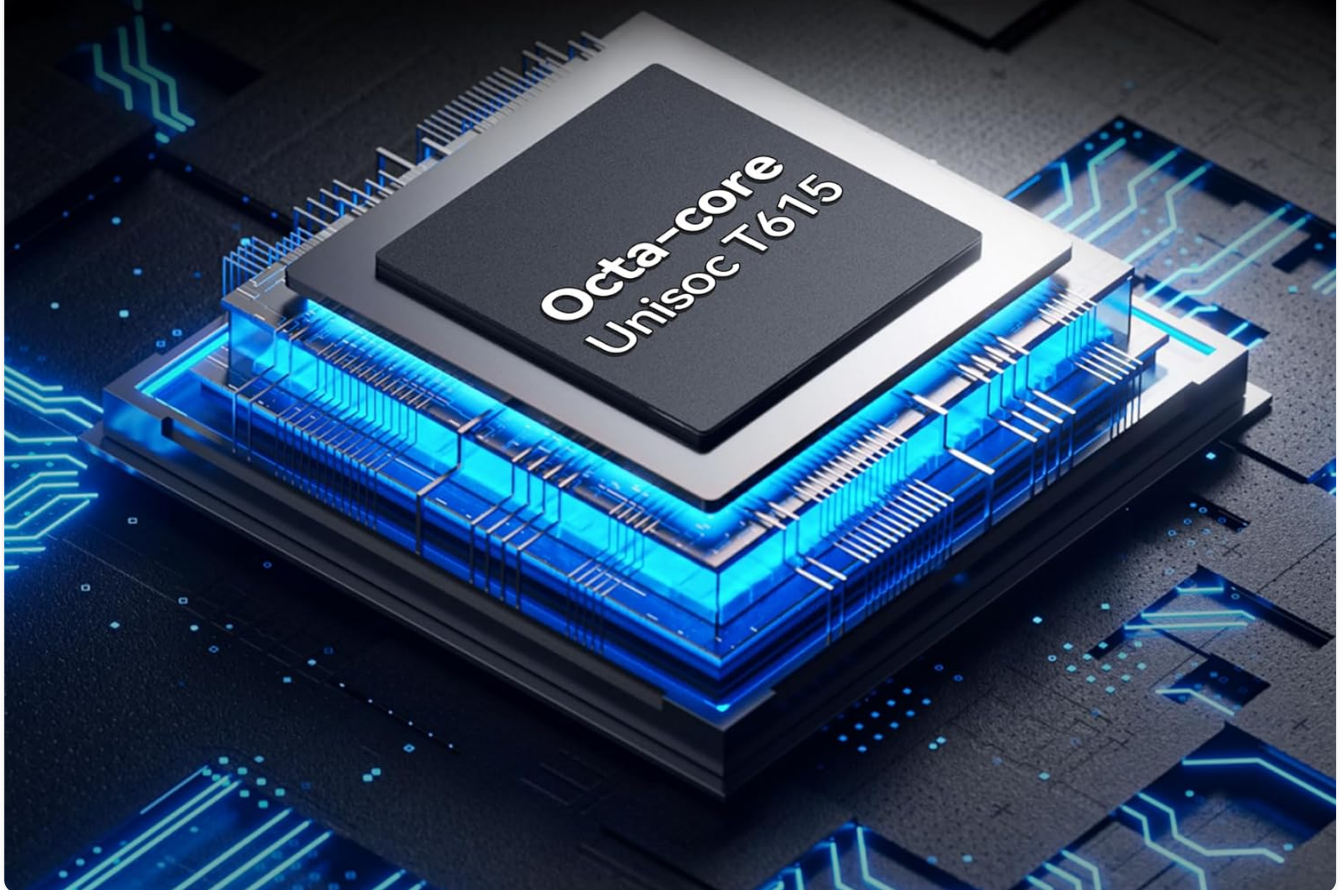


Image: The Octa-core Unisoc T615 processor.

A Comfortable and Smart Everyday Life Starting with Gemini AI

Google's latest AI, "Gemini," supports a wide range of tasks—from replying to emails and managing schedules to suggesting travel plans. Like a personal assistant, it streamlines your life and unlocks your creativity.

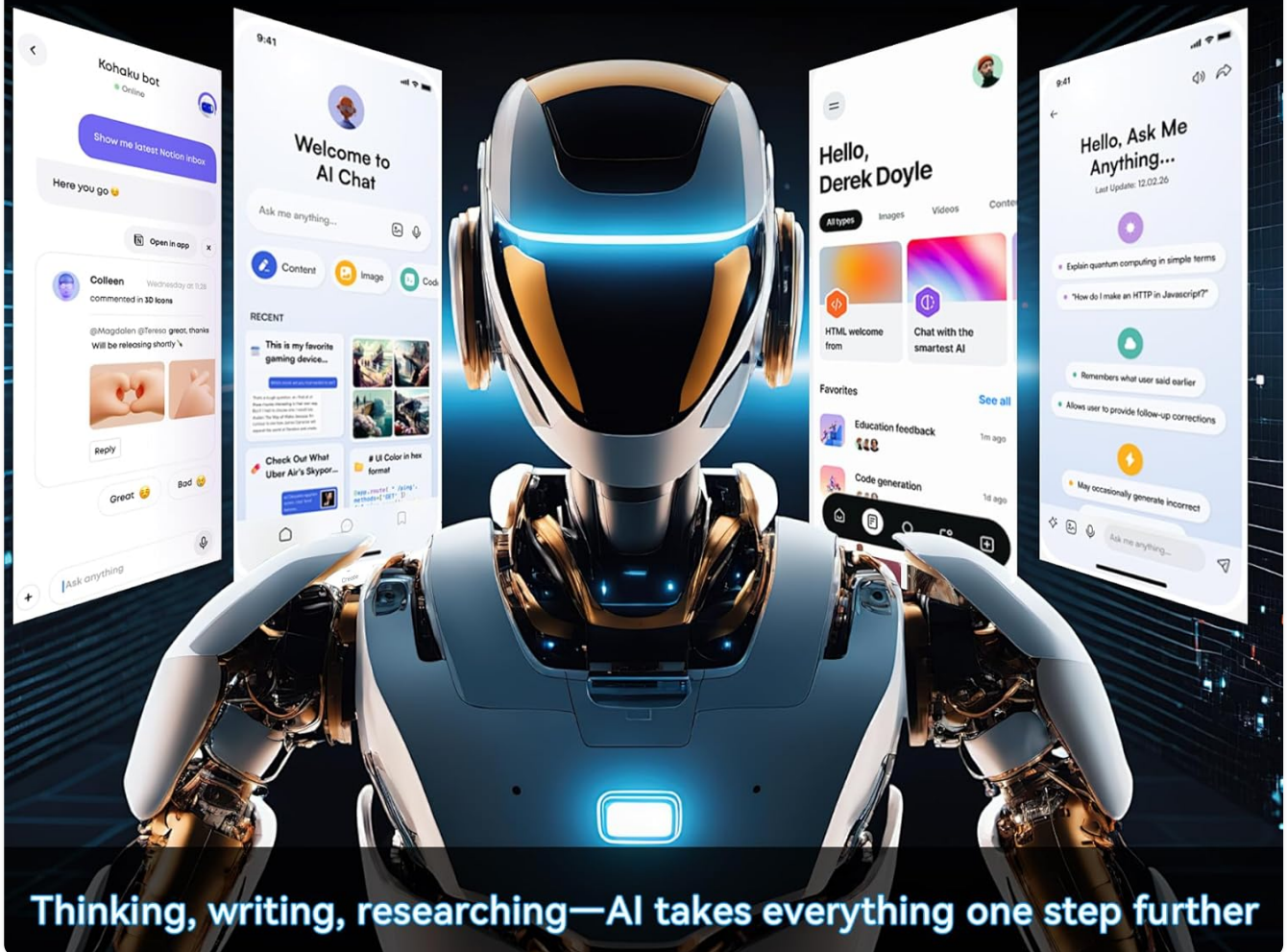


Image: Large capacity storage and expansion capabilities.

4.4 Camera System

Capture stunning photos with the 13MP rear camera and 5MP front camera. The camera system is enhanced with AI album editing, APV codec support, and Google Lens integration.

- **Google Lens:** Identify objects, plants, and text in real-time, and optimize photos with scene recognition and night view.

Equipped with a Large 8000mAh Battery

Perfect for working, gaming, or browsing on the go—enjoy long-lasting use in various scenarios.



5 hrs
Web Browsing



5 hrs
Video Streaming



4 hrs
Gaming



45 hrs
Music Playback



840 hrs
Standby Time

8000mAh



Image: Dual high-resolution cameras.

Smart AI Assistance

Real-Time Answers, Real-Time Insight



Understands
Your Screen



Tailored
Responses



Dive Deeper with
Gemini Advanced

AI Versatile Empowerment

Dive Deeper with Gemini Advanced



Image: Google AI image editing capabilities.

4.5 Battery Life

The tablet is equipped with an 8000mAh battery, providing extended usage times for various activities:

- Up to 10 hours of video playback.
- Up to 8 hours of gaming.
- Up to 40 hours of music playback.
- Up to 840 hours of standby time.

Large-Capacity Storage

With 8GB + 16GB (virtual memory) RAM and 128GB ROM, you can store plenty of photos, videos, apps, and more.



The image shows three tablets side-by-side. The left tablet displays a home screen with various app icons and a weather widget. The middle tablet displays a 'Movies' section with titles like 'Avengers: Endgame', 'Cabin in the Woods', 'Superman', 'Joker', and 'Wonder Woman'. The right tablet displays a 'Musics' section with albums like 'Adele 21', 'Satin', 'Doe sobe 2019', 'Toro Doest Dorany 2020', and 'Tonda Nefosy 2020'. Above the right tablet, a '2TB' storage icon is shown. Below the tablets, there are three white boxes with text: 'Supports up to 2TB', '≈40,000 photos', '≈25000 songs', and '180 hours of SD video'.

Supports up to 2TB

≈40,000 photos

≈25000 songs

180 hours of SD video

Image: 8000mAh battery performance.

4.6 Connectivity

The TABWEE T90 supports fast and reliable wireless connections:

- **5G WiFi:** Stream 4K videos and download content buffer-free with dual-band 5G WiFi (802.11a/b/g/n/ac).
- **Bluetooth 5.0:** Easily pair with wireless earbuds, speakers, and other Bluetooth-enabled devices for seamless audio and data transfer.



Image: High-speed 5G WiFi and Bluetooth 5.0 connectivity.

5. MAINTENANCE

Proper maintenance ensures the longevity and optimal performance of your TABWEE T90 tablet.

5.1 General Care

- **Cleaning:** Use a soft, lint-free cloth to clean the screen and body. Avoid abrasive materials or harsh chemicals.
- **Temperature:** Avoid exposing the tablet to extreme temperatures (hot or cold) or direct sunlight for prolonged periods.
- **Water Exposure:** The tablet is not waterproof. Keep it away from liquids.
- **Physical Protection:** Use the provided protective case to guard against drops and scratches.

5.2 Software Updates

Regularly check for and install system updates to ensure your tablet has the latest features, security patches, and performance improvements. Go to *Settings > System > System updates* to check for available updates.

5.3 Battery Care

- Avoid fully discharging the battery frequently.
- Do not leave the tablet plugged in for extended periods after it's fully charged.
- Use only the original charger or a certified compatible charger.

6. TROUBLESHOOTING

If you encounter issues with your TABWEE T90 tablet, try the following solutions before seeking professional support.

6.1 Common Issues and Solutions

Issue	Possible Solution
-------	-------------------

Issue	Possible Solution
Tablet does not power on	Ensure the battery is charged. Connect the charger and wait a few minutes before attempting to power on again. If unresponsive, press and hold the power button for 10-15 seconds to force a restart.
Wi-Fi connection issues	Restart your Wi-Fi router. On the tablet, turn Wi-Fi off and then on again. Forget the network and reconnect. Ensure you are within range of the Wi-Fi signal.
Slow performance or freezing	Close unused applications. Clear cache for problematic apps (Settings > Apps > [App Name] > Storage > Clear cache). Restart the tablet. Ensure sufficient storage space is available.
Apps crashing or not responding	Force stop the app (Settings > Apps > [App Name] > Force stop). Clear the app's cache and data. Uninstall and reinstall the app. Check for app updates in the Google Play Store.
Battery drains quickly	Reduce screen brightness. Disable Wi-Fi/Bluetooth when not in use. Close background apps. Limit location services. Check battery usage in Settings to identify power-hungry apps.

6.2 Factory Reset

If issues persist, a factory reset can resolve many software-related problems. **Warning:** A factory reset will erase all data on your tablet. Back up important data before proceeding.

- Go to *Settings > System > Reset options > Erase all data (factory reset)*
- Confirm your decision and follow the on-screen instructions.

7. SPECIFICATIONS

Feature	Detail
Model Name	T90-Android 16
Operating System	Android 16
Display Size	11 Inches
Screen Resolution	1920 x 1200 pixels
Processor	Octa-core Unisoc T615 (2 GHz)
RAM	24GB (8GB physical + 16GB virtual)
Internal Storage	128 GB
Expandable Storage	Up to 2TB via microSD card
Rear Camera	13 MP
Front Camera	5 MP

Feature	Detail
Battery Capacity	8000mAh
Wireless Connectivity	802.11a/b/g/n/ac (5G WiFi)
Bluetooth	Bluetooth 5.0
Item Weight	11.2 ounces
Product Dimensions	10.1 x 6.7 x 0.3 inches

8. WARRANTY AND SUPPORT




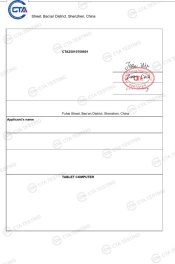
Your TABWEE T90 tablet comes with a **2-year warranty**, providing peace of mind for any potential issues. TABWEE also offers **24/7 US/CA support** to assist you with any questions or concerns.

For warranty claims, technical assistance, or general inquiries, please visit the official TABWEE website or contact their customer support directly through the channels provided on their website or in your product packaging.

Thank you for choosing TABWEE. We hope you enjoy your new tablet!

Related Documents - Tabwee T90

<

	<p>TABWEE T90 Tablet Product Data Sheet - Technical Specifications & Energy Labeling</p> <p>Detailed product data sheet for the TABWEE T90 tablet, including technical specifications, energy efficiency class, battery life, reparability index, and compliance with EU Regulation 2023/1669.</p>
	<p>TABWEE W90 Tablet - Produktdatenblatt und Reparierbarkeitsinformationen</p> <p>Offizielles Produktdatenblatt für das TABWEE W90 Tablet, das technische Spezifikationen, Energieeffizienz und den Reparierbarkeitsindex gemäß der EU-Verordnung 2023/1669 detailliert beschreibt.</p>
	<p>TABWEE T80 User Manual and Warranty Information</p> <p>Comprehensive user manual and warranty details for the TABWEE T80 tablet, covering activation, features, safety, maintenance, and regulatory compliance.</p>
	<p>FCC Part 22/24 Test Report for TABWEE W90 Tablet Computer</p> <p>This document presents the FCC Part 22 and Part 24 test results for the TABWEE W90 Tablet Computer, manufactured by Shenzhen Baijin Technology Co., Ltd. It covers conducted and radiated output power, spurious emissions, occupied bandwidth, band edge compliance, frequency stability, and peak-to-average ratio, performed by Shenzhen CTA Testing Technology Co., Ltd.</p>