

[manuals.plus](#) /

› [Shop-Vac](#) /

› [Shop-Vac 2 Gallon 20V Cordless Wet/Dry Vacuum with Detachable Blower, Model 5430082 Instruction Manual](#)

Shop-Vac 5430082

Shop-Vac 2 Gallon 20V Cordless Wet/Dry Vacuum with Detachable Blower

Model: 5430082

PRODUCT OVERVIEW

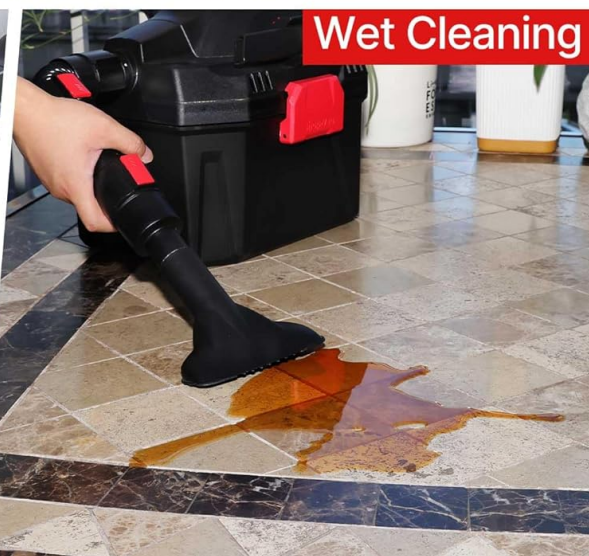
The Shop-Vac 2 Gallon 20V Cordless Wet/Dry Vacuum is a versatile 3-in-1 cleaning solution designed for dry pickup, wet cleaning, and blowing tasks. Its compact and portable design, combined with cordless operation, makes it suitable for various environments including workshops, cars, and jobsites. This unit features quick charging, onboard accessory storage, and a detachable blower for enhanced functionality.



Blower



Dry Cleaning



Wet Cleaning

Image: The Shop-Vac 2 Gallon 20V Cordless Wet/Dry Vacuum showcasing its three primary functions: blowing leaves, dry vacuuming a car interior, and wet vacuuming a liquid spill.

WHAT'S IN THE BOX

Verify that all components are present before beginning assembly and operation.

- 1 High-Efficiency Cartridge Filter
- 1 Filter Retainer
- 1 Foam Sleeve
- 1 LockOn Extendable Hose
- 1 Utility Nozzle
- 1 Crevice Tool
- 1 Power Charger

WHAT'S IN THE BOX ?



Utility Nozzle



Crevice Tool



Power Charger



Extendable Hose



Foam Sleeve



Cartridge Filter

Image: A visual representation of all accessories included with the vacuum, laid out on a surface next to the main unit.

SETUP INSTRUCTIONS

Follow these steps to prepare your Shop-Vac for use.

1. **Charge the Battery:** Connect the power charger to the vacuum's charging port and plug it into a standard electrical outlet. Allow the battery to fully charge before first use.
2. **Filter Installation:**
 - For **Dry Vacuuming:** Ensure the High-Efficiency Cartridge Filter is securely installed over the filter cage and held in place by the filter retainer.
 - For **Wet Vacuuming:** Remove the Cartridge Filter and install the Foam Sleeve over the filter cage. The foam sleeve is designed for wet pickup and protects the motor from liquids.
3. **Attach Hose and Accessories:**
 - For **Vacuuming:** Attach the LockOn Extendable Hose to the intake port on the front of the vacuum. Select either the Utility Nozzle or Crevice Tool and attach it to the end of the hose.
 - For **Blower Function:** Detach the top motor head from the tank. Attach the hose to the blower port located on the motor head. You can also attach the Utility Nozzle for directed airflow.

Wet/Dry Clean



**DETACHABLE
CORDLESS VACUUM**

Detachable Blower



Image: The vacuum unit with its top motor head detached from the tank, illustrating the modular design and integrated accessory storage for the hose and nozzles.



Compact and Portable, Better Accessories Storage



Image: Detailed views highlighting the compact nature of the vacuum, its integrated accessory storage, and the ease of carrying the unit.

OPERATING INSTRUCTIONS

Understand how to effectively use your vacuum's various functions.

1. **Power On/Off:** Locate the ON/OFF switch on the top of the motor head. Press to turn the unit on or off.
2. **Dry Vacuuming:** Ensure the cartridge filter is installed. Attach the hose and desired nozzle to the intake port. Move the nozzle over the dry debris to be collected.
3. **Wet Vacuuming:** Ensure the foam sleeve is installed and the cartridge filter is removed. Attach the hose and utility nozzle to the intake port. Move the nozzle over liquid spills. The vacuum will automatically shut off when the tank is full.
4. **Blower Function:** Detach the motor head from the tank. Attach the hose to the blower port. Use the unit to blow away debris from surfaces.

Video: Official Shop-Vac demonstration of the 2 Gallon Cordless 3-in-1 Vac, highlighting its wet/dry vacuuming and blower capabilities, and ease of use for car cleaning.

PRODUCT DETAILS

2

GALLONS

20v
max

PEAK HP*

1 1/4
INCH

DIAMETER
TOOLS

2-7
FOOT

HOSE
LENGTH

20
mins

RUNTIME



3 IN 1

Wet / Dry / Blow

Image: A detailed diagram labeling key components of the Shop-Vac unit, including the battery bay, ON/OFF switch, crevice tool, blower port, tank, extendable hose, and utility nozzle.

MAINTENANCE

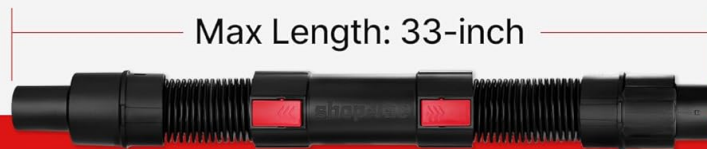
Regular maintenance ensures optimal performance and extends the life of your vacuum.

- **Emptying the Tank:** After each use, especially wet pickup, unlatch the motor head and empty the tank. Clean the inside of the tank with water and mild detergent if necessary, then allow it to dry completely.
- **Filter Care:**
 - **Cartridge Filter (Dry Use):** Tap the filter gently to dislodge dust. For heavy dirt, rinse under running water and allow to air dry completely before reinstallation. Replace if damaged or excessively dirty.
 - **Foam Sleeve (Wet Use):** Rinse the foam sleeve thoroughly with water after each wet use. Squeeze out excess water and allow it to air dry completely before storing or re-using.
- **Accessory Cleaning:** Clean the hose and nozzles with water and mild detergent as needed. Ensure they are dry before storing.
- **Storage:** Store the vacuum and all accessories in a cool, dry place. Utilize the onboard accessory storage to keep all parts organized and readily accessible.



CARTRIDGE FILTER

Captures fine dust and debris for cleaner air and better performance.



EXTENDABLE HOSE

For flexible, angled cleaning in hard-to-reach areas.

Hose extends from **BOTH SIDES** to maximize cleaning reach (up to 33 inches)

Image: A view of the cartridge filter, which captures fine dust, and the extendable hose, designed for flexible cleaning in hard-to-reach areas.

TROUBLESHOOTING

If you encounter issues, refer to this section for common solutions.

Problem	Possible Cause	Solution
Vacuum does not turn on	Battery not charged; Battery not properly inserted; ON/OFF switch not engaged.	Charge the battery fully; Ensure battery is securely in place; Press the ON/OFF switch firmly.
Low suction power	Clogged filter; Full tank; Blockage in hose or nozzle; Improperly sealed motor head.	Clean or replace filter; Empty the tank; Clear any blockages; Ensure motor head latches are secure.
Water leaking from vacuum	Tank is full (wet use); Foam sleeve not installed correctly; Tank or hose damaged.	Empty the tank; Ensure foam sleeve is properly seated; Inspect tank and hose for damage.

Problem	Possible Cause	Solution
Blower function is weak	Battery low; Obstruction in blower port or nozzle.	Charge the battery; Clear any obstructions from the blower port or nozzle.

SPECIFICATIONS

Feature	Detail
Brand	Shop-Vac
Model Name	5430082
Special Feature	Compact, Cordless, Portable, Rechargeable, Wet/Dry
Filter Type	Cartridge, Foam Sleeve
Power Source	Battery Powered (20V)
Capacity	2 Gallons
Wattage	65 watts
Motor Horsepower	1 horsepower
Blower Function	Up to 16 m/s
Product Dimensions	12.8"L x 10"W x 12.1"H
Item Weight	10.6 pounds
Indoor/Outdoor Usage	Outdoor

WARRANTY AND SUPPORT

For warranty information, product registration, or technical support, please refer to the documentation included with your product or visit the official Shop-Vac website. Keep your purchase receipt as proof of purchase for any warranty claims.