

BOXPOT Q11

BOXPOT Q11 Android TV Box User Manual

Model: Q11 | Brand: BOXPOT

1. INTRODUCTION

This user manual provides detailed instructions for the setup, operation, and maintenance of your BOXPOT Q11 Android TV Box. The Q11 is a high-performance streaming media player featuring the Amlogic S905X4 Quad-Core processor, Android 11.0 operating system, and support for 8K and 4K UHD video streaming. It includes dual-band Wi-Fi (2.4/5GHz) and a 1000M Ethernet port for stable network connectivity, along with an IRI Voice Remote for convenient control. Please read this manual thoroughly to ensure proper use and to maximize your viewing experience.



Image: The BOXPOT Q11 Android TV Box, its IRI Voice Remote, and the product packaging, showcasing the device's sleek design and included accessories.

2. PACKAGE CONTENTS

Verify that all items listed below are included in your product package:

- 1 x BOXPOT Q11 Android TV Box
- 1 x IRI BT Voice Remote Control
- 1 x US Power Adapter
- 1 x HDMI Cable
- 1 x User Manual

Sharing VPN to Family

Login your VPN app with Ethernet, Connect Q11 Software WIFI Router to Access VPN Internet

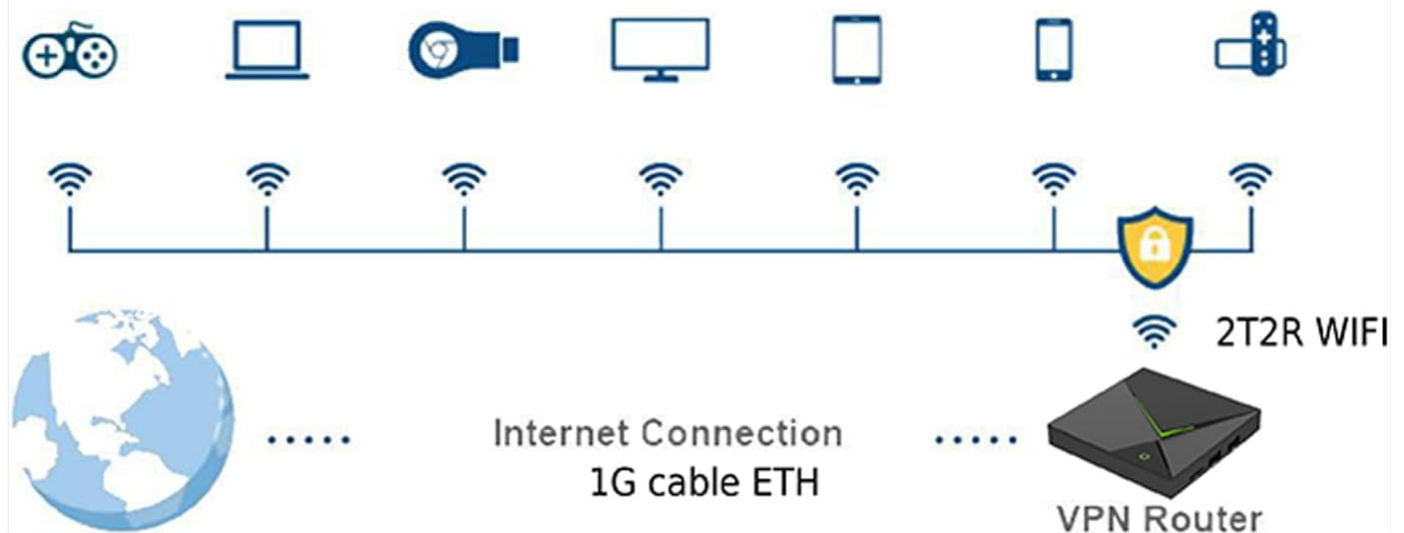


Image: A visual representation of the BOXPOT Q11 TV Box and its included accessories: the TV box, remote controller, user guide, power adapter, and HDMI cable.

3. PRODUCT OVERVIEW

The BOXPOT Q11 features a compact design with essential ports for connectivity. Familiarize yourself with the device's layout and available connections.

Device Ports and Interfaces:

- **LAN 1000M:** Gigabit Ethernet port for wired network connection.
- **AV Output:** For connecting to older televisions.
- **Optical Audio Output (SPDIF):** For digital audio connection.
- **HDMI:** For connecting to modern displays.
- **DC 5V:** Power input port.

- **Micro SD Card Slot:** Supports up to 128GB for expanded storage.
- **USB 2.0:** Standard USB port for peripherals.
- **USB 3.0:** High-speed USB port for faster data transfer.



Micro SD card slot X 1 (supports up to 128GB)
USB 2.0 X 1
USB 3.0 X 1

Multiple Ports for Easy Connection

LAN 1000M X 1
AV Output for Older TVs X 1
Optical Audio Output (SPDIF) X1
HDMI X 1
DC 5V Power Adapter X 1



Image: A detailed diagram illustrating the various input and output ports on the BOXPUP Q11 Android TV Box, including LAN, AV, Optical, HDMI, DC 5V, Micro SD, USB 2.0, and USB 3.0.

4. SETUP

Follow these steps to set up your BOXPUP Q11 Android TV Box:

1. **Connect to TV:** Connect one end of the provided HDMI cable to the HDMI port on the Q11 TV Box and the other end to an available HDMI input on your television.
2. **Connect Power:** Plug the US power adapter into the DC 5V port on the Q11 TV Box, then plug the adapter into a wall outlet.

3. Network Connection (Optional):

- **Wired:** For a stable connection, connect an Ethernet cable from your router to the LAN 1000M port on the Q11 TV Box.
 - **Wireless:** If using Wi-Fi, you will configure this after the initial boot-up.
4. **Power On:** Turn on your television and select the correct HDMI input source. The Q11 TV Box should automatically power on and display the boot-up screen.
 5. **Initial Configuration:** Follow the on-screen prompts to complete the initial setup, including language selection, Wi-Fi connection (if not using Ethernet), and Google account login.



Image: The BOXPOT Q11 TV Box positioned in front of a television screen, illustrating a typical setup for home entertainment, highlighting its Android 11 OS, S905X4 processor, Dual WiFi, and Bluetooth 4.2 capabilities.

5. OPERATING INSTRUCTIONS

Once set up, navigate the Android TV interface using the IRI BT Voice Remote Control. The remote allows for intuitive

control and voice commands.

Basic Navigation:

- Use the directional pad (up, down, left, right) to move between menu items.
- Press the **OK** button to select an item.
- Press the **Back** button to return to the previous screen.
- Press the **Home** button to go to the main Android TV home screen.

Voice Control:

Press the dedicated voice button on your IRI BT Voice Remote to activate voice commands. Speak clearly into the remote to search for content, open applications, or control playback.

Screen Mirroring (Miracast):

The Q11 supports one-click screen mirroring, allowing you to cast games or live sports from your compatible phone or tablet directly to your TV. Access the Miracast feature from the device's settings or a dedicated app.

6. CONNECTIVITY

The BOXPOT Q11 offers robust connectivity options to ensure a smooth streaming experience.

Wi-Fi Connection:

The device supports dual-band 2.4GHz and 5GHz Wi-Fi, providing flexibility and improved performance in congested wireless environments. To connect to Wi-Fi:

1. Go to **Settings** on the home screen.
2. Select **Network & Internet**.
3. Choose your desired Wi-Fi network from the list.
4. Enter the Wi-Fi password if prompted.

Ethernet Connection:

For the most stable and fastest connection, use the built-in 1000M Gigabit Ethernet port. Simply connect an Ethernet cable from your router to the LAN port on the Q11 TV Box. The device will automatically detect and use the wired connection.

Bluetooth:

The Q11 features Bluetooth connectivity, primarily used for the IRI BT Voice Remote Control. It can also be used to connect other compatible Bluetooth accessories.

7. 8K/4K UHD STREAMING

Experience ultra-high-definition content with the BOXPOT Q11, designed to deliver stunning visuals.

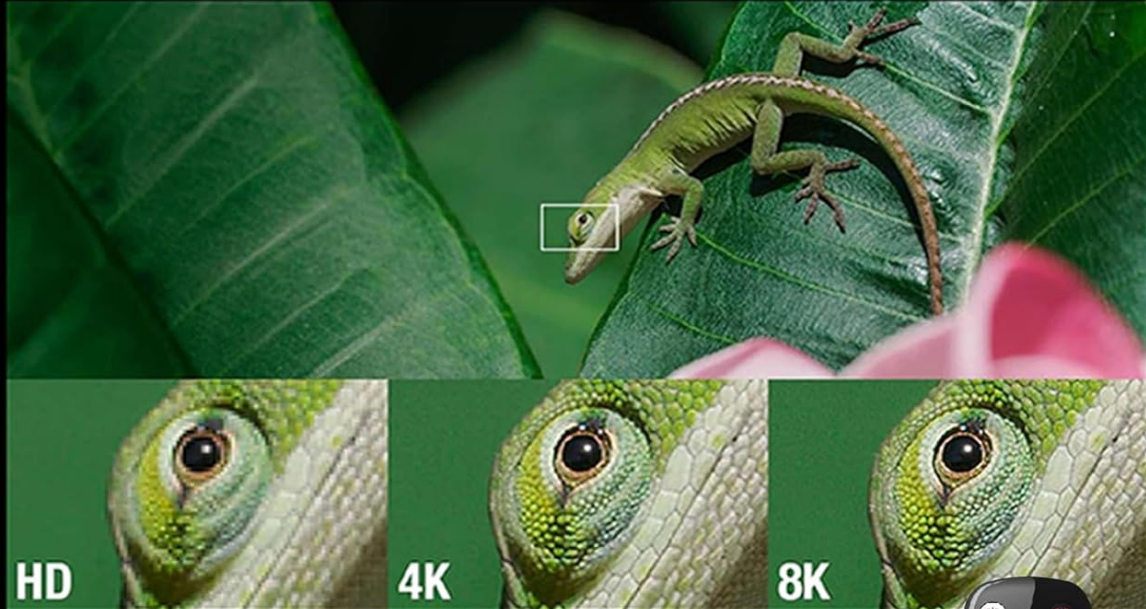
8K@60fps Output:

The Q11 streaming box supports 8K resolution at 60 frames per second, providing exceptional detail and clarity. This requires an 8K-compatible television and 8K content.

HDR (High Dynamic Range):

Enjoy brighter, more realistic colors and greater detail with HDR support. This technology enhances the contrast and color accuracy of compatible content.

8K HDR



8K gives you a crisper picture using four times more pixels than standard HD. High Dynamic Range (HDR) delivers brighter, more realistic colors and greater detail.



Image: A visual comparison demonstrating the enhanced clarity and detail of 8K HDR compared to HD and 4K resolutions, highlighting the vibrant colors and sharper image quality.

Advanced Video Formats:

The Q11 is compatible with advanced video codecs including H.265, VP9, and AV1, ensuring efficient decoding of high-quality video streams.

AV1

4k 60fps HDR Video encode format on YouTube



High performance
Highly efficient
Higher quality per bit rate

50% more efficient
than H.264

20% more efficient
than HEVC

60FPS

handle up to 60 frames per second on 4K - that's double what other set-top boxes can do. It's an advantage you'll notice naturally when you watch NBA live or play a racing game.

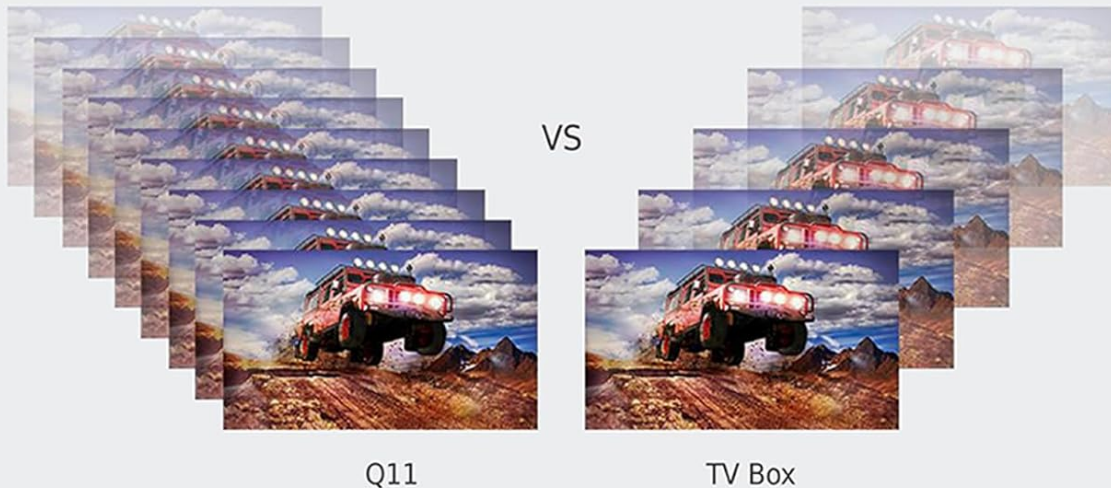


Image: An illustration detailing the efficiency of the AV1 codec (50% more efficient than H.264, 20% more efficient than HEVC) and a comparison of 60 frames per second playback on the Q11 versus standard TV boxes, showing smoother motion.

8. ADVANCED FEATURES

VPN Sharing:

The Q11 TV Box supports sharing VPN internet access. You can log in to your VPN application via an Ethernet connection, and the Q11 can then function as a software Wi-Fi router to share the VPN-protected internet with other devices in your home.



Image: A diagram illustrating how the BOXPOT Q11 can share a VPN connection. The Q11 connects to the internet via a 1G cable Ethernet, runs a VPN app, and then broadcasts a 2T2R Wi-Fi signal to other devices, effectively acting as a VPN router.

9. MAINTENANCE

To ensure the longevity and optimal performance of your BOXPOT Q11 Android TV Box, follow these maintenance guidelines:

- **Cleaning:** Use a soft, dry cloth to clean the exterior of the device. Avoid using liquid cleaners or abrasive materials.
- **Ventilation:** Ensure the device is placed in a well-ventilated area to prevent overheating. Do not block the ventilation openings.
- **Power Off:** When not in use for extended periods, it is recommended to unplug the power adapter.
- **Software Updates:** Periodically check for system updates in the device settings to ensure you have the latest features and security patches.

10. TROUBLESHOOTING

If you encounter issues with your BOXPOT Q11, refer to the following common problems and solutions:

- **No Power/No Display:**
 - Ensure the power adapter is securely connected to both the device and a working power outlet.
 - Verify that the HDMI cable is properly connected to both the TV Box and the TV, and that the correct HDMI input is selected on your TV.
- **No Internet Connection:**

- For Wi-Fi, check your network settings and ensure the correct password is entered. Try restarting your router.
- For Ethernet, ensure the cable is securely connected and your router is functioning correctly.

- **Remote Control Not Responding:**

- Check the batteries in the remote control and replace them if necessary.
- Ensure there are no obstructions between the remote and the TV Box.
- If it's a Bluetooth remote, try re-pairing it in the device's Bluetooth settings.

- **Poor Video Quality:**

- Ensure your internet connection is stable and fast enough for high-resolution streaming.
- Verify that your TV supports the resolution (e.g., 4K or 8K) you are trying to stream.
- Check the video output settings on the Q11 TV Box.

11. SPECIFICATIONS

Feature	Specification
Brand	BOXPUT
Model Number	Q11
Operating System	Android 11.0
Processor	Amlogic S905X4 Quad-Core
RAM	4GB
ROM	32GB
Video Output	8K@60fps, H.265, VP9, AV1
Connectivity	Dual-band 2.4GHz/5GHz Wi-Fi, 1000M Ethernet, Bluetooth
Ports	HDMI, USB 2.0, USB 3.0, Micro SD, LAN, AV, Optical (SPDIF), DC 5V
Dimensions	7.8 x 5.6 x 2.2 inches
Weight	1.21 pounds (0.55 Kilograms)
Color	Black
Special Features	Convenient control, Easy to install, Miracast

12. WARRANTY AND SUPPORT

BOXPUT is committed to providing quality products and customer satisfaction. While specific warranty details are not provided in this manual, the product includes access to a friendly after-sales support team.

For any questions, technical assistance, or support needs, please refer to the contact information provided with your purchase or visit the official BOXPUT website. Our support team is available to assist you with any issues or inquiries regarding your Q11 Android TV Box.

Don't Miss Out on Awesome Content!

Supports 8K Ultra HD resolution with HDR for stunning colors and contrast.

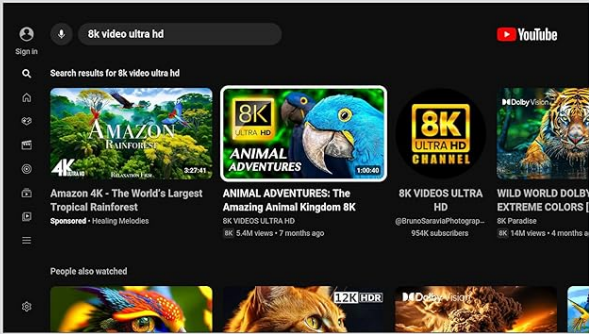
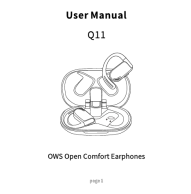



Image: A person seated at a desk, using a computer, with the BOXPOT Q11 TV Box and remote control nearby, symbolizing readily available customer support and assistance.

Related Documents - Q11

	BOXPUT BPR1S Plus 2.4G RF Remote - Product Overview and Safety Information Official product overview for the BOXPOT BPR1S Plus 2.4G RF remote, detailing its features, manufacturer, European representative, and essential safety warnings. Includes SKU 10500023.
	BOXPUT Q5 PLUS Android TV Box - 4K HD, Android 11, Amlogic S905W2, 2GB/16GB The BOXPOT Q5 PLUS Android TV Box offers Android 11.0, 4K HD streaming, and powerful performance with an Amlogic S905W2 Quad-Core processor, 2GB RAM, and 16GB ROM. Features dual-band WiFi, Bluetooth 5.2, and Ethernet connectivity. Includes manufacturer and distributor details.
	MINISO Q11 Open Ear Sports Wireless Headset User Manual User manual for the MINISO Q11 Open Ear Sports Wireless Headset, providing instructions and specifications.
	Motorola Q11 WiFi 6 Mesh System: Quick Start and Regulatory Guide Comprehensive guide to setting up your Motorola Q11 WiFi 6 mesh system, including front panel light indicators, safety precautions, port descriptions, package contents, placement tips, and essential regulatory compliance information (FCC, ISED, WEEE).

 <p>User Manual Q11</p> <p>OWS Open Comfort Earphones</p> <p>page 1</p>	<p>Q11 OWS Open Comfort Earphones User Manual and Specifications</p> <p>User manual, product overview, specifications, and operating instructions for the Q11 OWS Open Comfort Earphones, including pairing, charging, and multi-function operations.</p>
 <p>ANJVISION</p> <p>2023 Product Electronic Manual</p>	<p>ANJVISION 2023 Product Electronic Manual - AI Surveillance Modules</p> <p>Comprehensive guide to ANJVISION's 2023 product line, featuring AI-powered surveillance modules, including Full Color, Binocular, and Double Lens series with advanced features like 4K resolution, human detection, and H.265+ encoding.</p>