

Manuals+

[Q & A](#) | [Deep Search](#) | [Upload](#)

[manuals.plus](#) /

- › [GravaStar](#) /
- › [GravaStar Mercury V75 Pro Gaming Keyboard User Manual](#)

GravaStar V75 PRO

GravaStar Mercury V75 Pro Gaming Keyboard User Manual

Model: V75 PRO

1. INTRODUCTION

This manual provides detailed instructions for the setup, operation, maintenance, and troubleshooting of your GravaStar Mercury V75 Pro Gaming Keyboard. Please read this manual thoroughly to ensure optimal performance and longevity of your device.

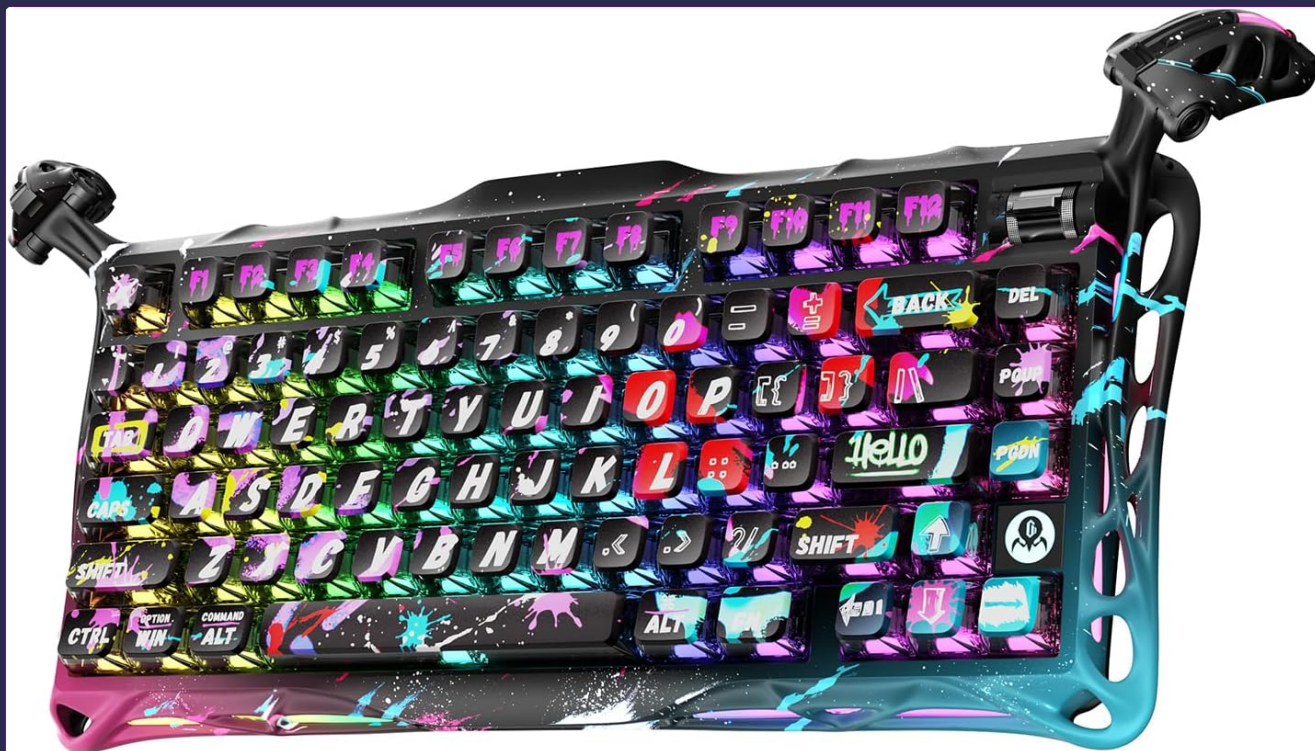


Figure 1: GravaStar Mercury V75 Pro Gaming Keyboard.

2. PACKAGE CONTENTS

Upon unboxing, please verify that all items listed below are present and in good condition:

- GravaStar Mercury V75 Pro Gaming Keyboard
- USB-C Cable
- Keycap Puller
- Switch Puller
- Additional Keycaps (if applicable to your model)
- User Manual (this document)



Figure 2: Included accessories and packaging.

3. SETUP

3.1 Connecting the Keyboard

1. Locate the USB-C port on the back of the keyboard.
2. Connect the provided USB-C cable to the keyboard.
3. Connect the other end of the USB-C cable to an available USB port on your computer.
4. The keyboard will automatically power on and the RGB lighting will illuminate.



Figure 3: Keyboard connected to a PC setup.

3.2 System Compatibility

The GravaStar Mercury V75 Pro supports both Windows and Mac operating systems. A toggle switch is located on the back of the keyboard to select the appropriate mode.

- **Windows Mode:** Slide the switch to the 'WIN' position.
- **Mac Mode:** Slide the switch to the 'MAC' position.

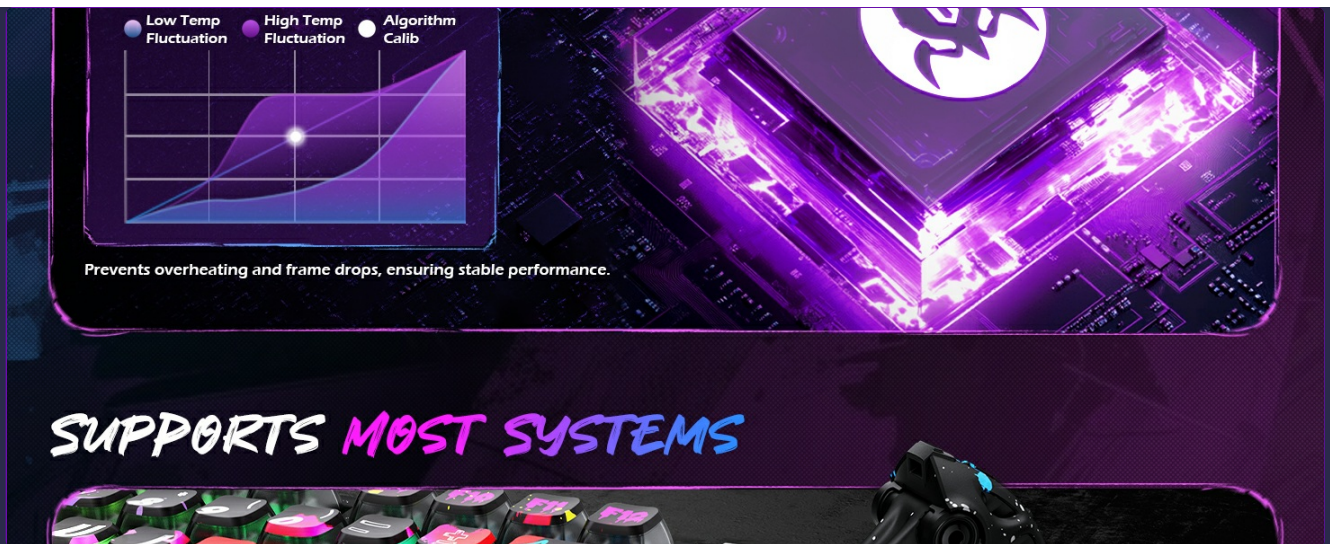


Figure 4: System compatibility overview.

3.3 Adjustable Feet

The keyboard features two-level adjustable feet on the underside, allowing you to customize the typing angle for ergonomic comfort.

4. OPERATING THE KEYBOARD

4.1 Basic Functions

The keyboard operates as a standard 75% layout keyboard. All standard keys function as expected. The integrated knob on the top right controls volume (rotate) and mute (press).

4.2 RGB Lighting Control

The keyboard features dual-zone RGB lighting with 16+ backlight modes. Lighting effects can be customized via the GravaStar software.

16 MILLION RGB BACKLIT

Choose vibrant RGB, customize your style



Figure 5: RGB backlighting in action.

4.3 Software Configuration

For advanced customization of key functions, RGB lighting, and performance settings, download and install the official GravaStar software from the official website. The software allows for:

- Actuation Point Adjustment
- Rapid Trigger Mode Configuration
- Dead Zone Settings
- Polling Rate Adjustment

- Custom Key Bindings
- RGB Lighting Effects Customization

ENGINEERED FOR SILENCE AND COMFORT

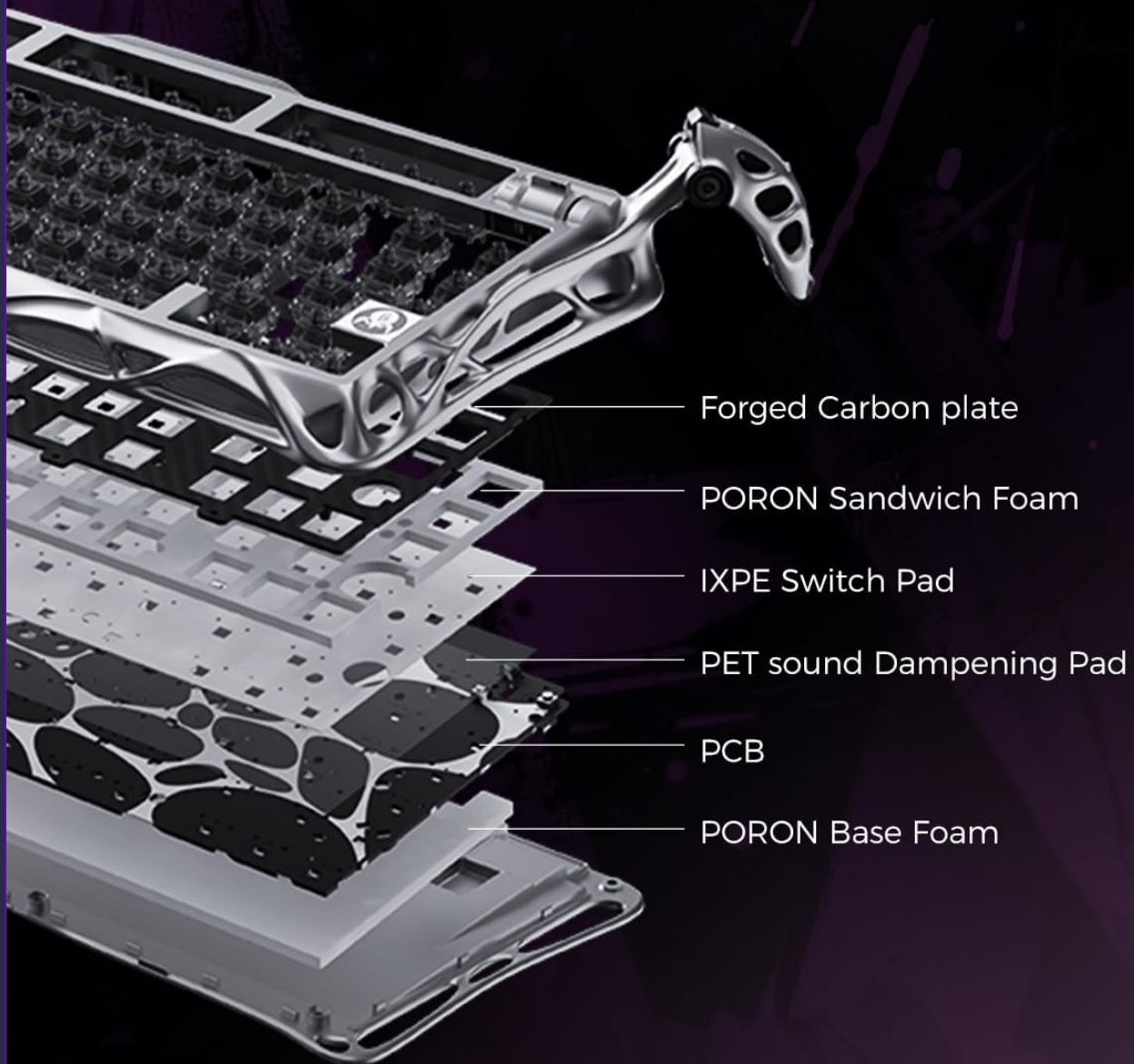


Figure 6: GravaStar software interface for customization.

5. KEY FEATURES

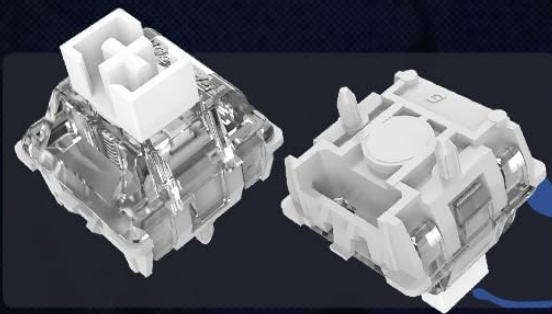
5.1 Hall Effect Magnetic Switches

The keyboard is equipped with Hall Effect magnetic switches, co-engineered with Gateron, offering precise and

adjustable actuation. Key features include:

- **Sensitivity:** 0.005mm
- **Actuation Range:** 0.1mm–3.5mm (adjustable)
- **Switch Type:** Linear
- **Lifespan:** 100 Million Clicks
- **Hot-Swappable:** Switches can be easily replaced without soldering.

GAMING MAGNETIC SWITCH



◆ **36g** | **50g**
Start force | End force

◆ **0.005mm**
Sensitivity

◆ **Linear**
Switch type

◆ **0.005-3.3mm**
Actuation Range

◆ **100 Million
Clicks**
Lifespan

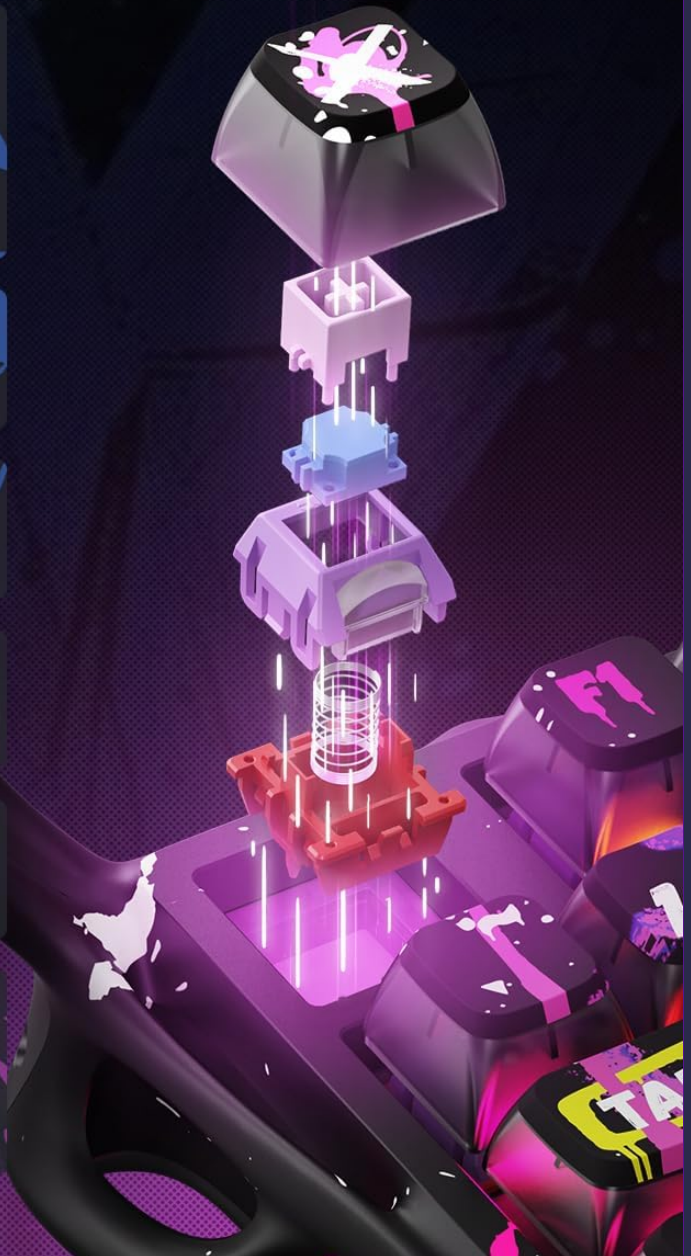


Figure 7: Gaming Magnetic Switch details.

HOT SWAPPABLE KEYBOARD

Easily swap switches
and caps to match your style



Figure 8: Hot-swappable design for easy customization.

5.2 8000Hz Polling Rate

Experience ultra-low latency with an 8000Hz polling rate, ensuring lightning-fast response times for competitive gaming.

8K HZ POLLING RATE

Ultra low 0.125ms latency
for lightning fast response response



Figure 9: 8KHz Polling Rate for rapid response.

5.3 Dynamic Rapid Trigger

This feature eliminates key