

XIAOMI 5 Pro

Xiaomi Robot Vacuum 5 Pro User Manual

Model: 5 Pro (65238)

INTRODUCTION

This manual provides essential information for the safe and efficient operation, maintenance, and troubleshooting of your Xiaomi Robot Vacuum 5 Pro. Please read this manual thoroughly before using the product and retain it for future reference.

IMPORTANT SAFETY INFORMATION

To reduce the risk of injury or damage, read and follow all safety precautions. This device is for household use only.

- Do not use the robot vacuum on wet surfaces or in environments with standing water.
- Keep children and pets away from the robot vacuum during operation.
- Use only the original power adapter and charging dock provided by the manufacturer.
- Ensure the power cord is not damaged or tangled.
- Remove any loose cables, small objects, or fragile items from the floor before cleaning to prevent entanglement or damage.
- Do not operate the robot vacuum near open flames or flammable materials.
- Do not sit on the robot vacuum or place heavy objects on it.
- Turn off the robot vacuum and unplug the charging dock before performing any maintenance or cleaning.

PACKAGE CONTENTS

Verify that all components are present in the package:

- Xiaomi Robot Vacuum 5 Pro
- Self-cleaning Base Station
- Power Adapter

- Side Brush
- Main Brush (pre-installed)
- Dustbin (pre-installed)
- Water Tank (pre-installed)
- Mop Pads (x2)
- User Manual

PRODUCT OVERVIEW

Familiarize yourself with the components and features of your Xiaomi Robot Vacuum 5 Pro.



Figure 1: The Xiaomi Robot Vacuum 5 Pro docked in its self-cleaning base station, with a smartphone displaying the control app interface.



Figure 2: Overview of key features including AI obstacle avoidance, front HD camera, dToF radar, extendable mop, powerful suction, and the self-cleaning base station.

AI triple-camera Smart detection system

Equipped with an RGB camera, two infrared cameras and an infrared 3D dot projector, the robot vacuum accurately detects dirt and senses the environment in real time, enabling flexible, intelligent cleaning without reckless movement.



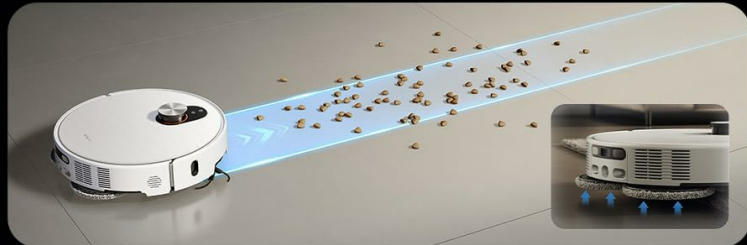
Figure 3: The AI triple-camera smart detection system, comprising an RGB camera, two infrared cameras, and an infrared 3D dot projector for accurate environment sensing.

AI dirt recognition Smart cleaning

Intelligently identifies debris types and applies the appropriate cleaning strategy.

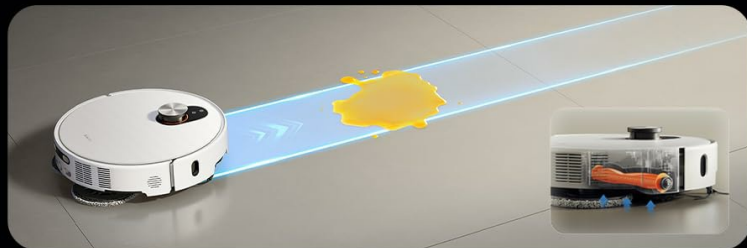
Pet food

Vacuum only



Beverage

Mop only



Soup/Porridge

Bypass

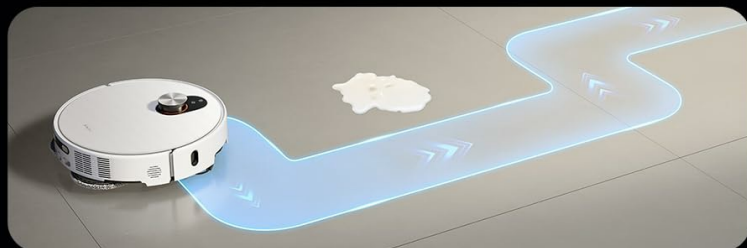


Figure 4: AI dirt recognition system intelligently identifying debris types and applying appropriate cleaning strategies (vacuum, mop, or bypass).

AI night vision with light Clean day or night

Equipped with two LED night vision lights that automatically turn on based on ambient light conditions. Even in low-light environments, the robot vacuum can detect obstacles and dirt ahead for efficient cleaning.



Figure 5: AI night vision with two LED lights, enabling the robot vacuum to detect obstacles and dirt efficiently in low-light conditions.

Ultrasonic carpet detection

Mop pads lift to keep carpets dry

Featuring an ultrasonic floor sensor, it automatically detects carpets and raises the mop pads by 15mm to avoid contact. Multiple cleaning modes are available based on carpet type, ensuring your carpets can be cleaned properly without getting wet.



Vacuum only on carpets
Low-pile carpets



Carpet avoidance
Long-pile carpets



Carpet crossing
Floor mats



Ignore carpets
No carpet areas



Figure 6: Ultrasonic carpet detection system, which automatically lifts mop pads by 15mm to avoid wetting carpets, offering multiple cleaning modes.

Up to 20mm obstacle crossing Travels over more obstacles

Equipped with a floating main brush cover that allows the robot vacuum to go over obstacles while cleaning. It also features durable brushless motor-driven wheels to reduce collisions and the chances of getting stuck.

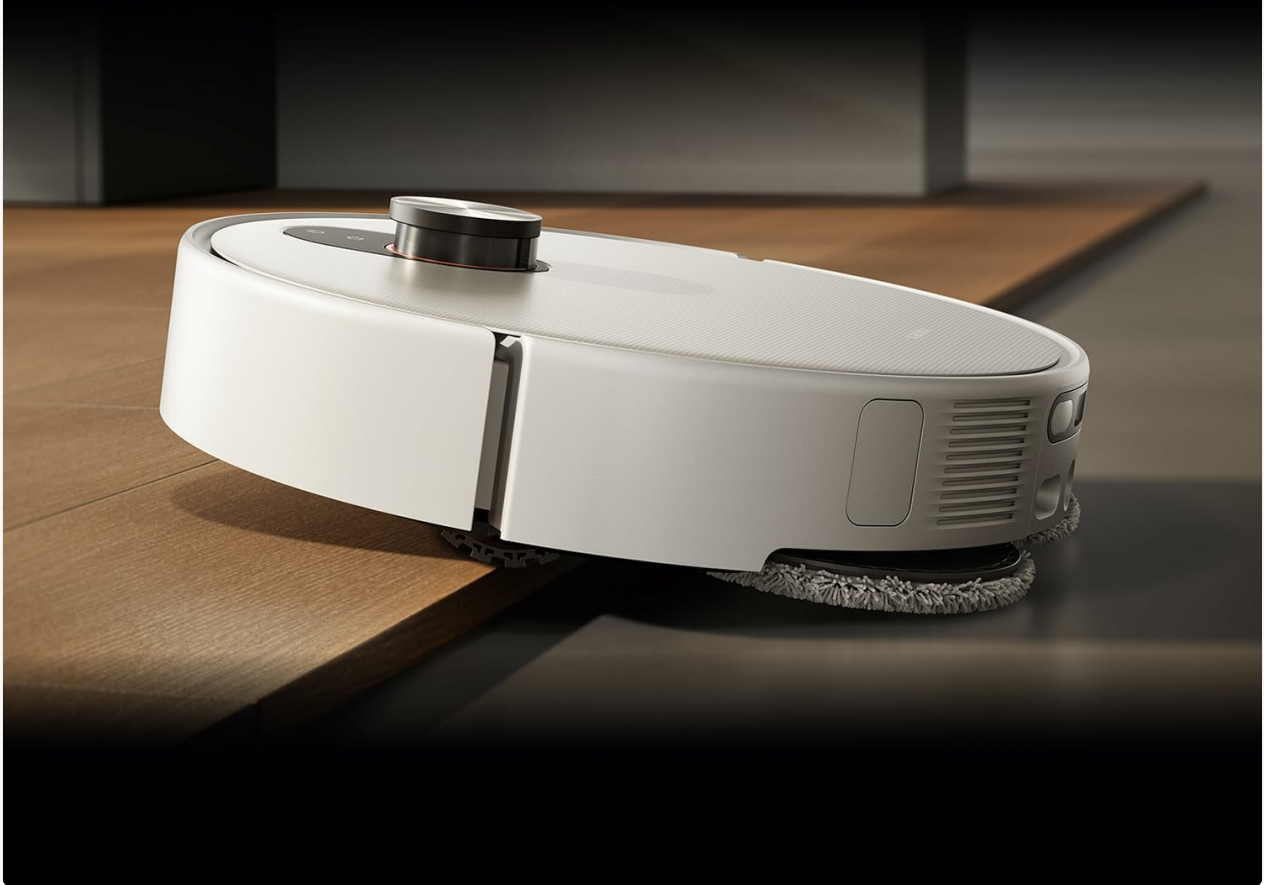


Figure 7: The robot vacuum's ability to cross obstacles up to 20mm high, facilitated by a floating main brush cover and durable wheels.

Main and side brushes both feature anti-tangle protection technology

Easy to clean and maintain

With the anti-tangle side brush and dual-blade auto-trimming main brush, hair tangling is significantly reduced. The robot vacuum trims hair as it cleans, efficiently collecting hair and debris with powerful suction, so you spend less time on manual brush cleaning and maintenance.



99%
Hair pick-up rate



Anti-tangle hair-cutting brush

With two concealed blades, it trims and vacuums without damaging floors



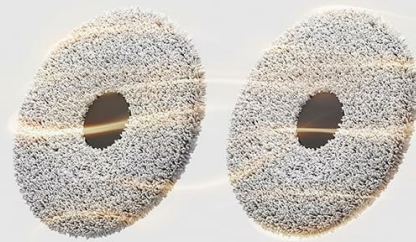
Anti-tangle side brush

The large-diameter design paired with centrifugal spinning ensures hair doesn't stick on the brush

Figure 8: Main and side brushes featuring anti-tangle protection technology, including concealed blades for the main brush and a large-diameter design for the side brush.

80°C hot-water washing High temperature washing for a deeper clean

Heating the mop pads washing water to up to 80°C quickly lifts stubborn stains, while high-speed spinning and scrubbing ensure a more efficient clean and fresh and dry mop pads.



Mop pads drying with hot air Prevents mould and odours

2-hour quick drying of the mop pads to ensure they stay fresh and clean.

Figure 9: The self-cleaning base station performing 80°C hot-water washing for deep cleaning and 2-hour hot air drying of mop pads to prevent mold and odors.

4L large water tank Mop up to 400m² in one go

With an extra-large water tank, there's less need for frequent refills during normal daily use. When full, the water tank allows the robot vacuum to mop up to 400m².



Figure 10: The 4L large water tank system within the self-cleaning base station, designed for extended mopping coverage without frequent refills.

SETUP GUIDE

1. Unpacking and Placement

1. Carefully remove all components from the packaging.
2. Choose a suitable location for the self-cleaning base station. Ensure there is at least 0.5 meters of clear space on both sides and 1.5 meters in front of the base station.
3. Place the base station against a wall on a hard, level surface. Do not place it on carpets.
4. Connect the power adapter to the base station and plug it into a power outlet. Ensure the cable is neatly tucked away to prevent entanglement.

2. Initial Charging

- Place the robot vacuum onto the charging contacts of the base station. Ensure the contacts align.
- The robot will automatically power on and begin charging. Allow it to fully charge before first use (approximately 6 hours). The indicator light on the robot will change when fully charged.

3. App Download and Connection

1. Download the **Xiaomi Home** app from your smartphone's app store (App Store for iOS, Google Play Store for Android).
2. Open the app and create an account or log in.
3. Tap the "+" icon in the top right corner to add a device.
4. Select "Xiaomi Robot Vacuum 5 Pro" from the list of available devices or scan the QR code on the robot.
5. Follow the in-app instructions to connect the robot to your home Wi-Fi network. Ensure your phone is connected to a 2.4GHz Wi-Fi network during setup.
6. Once connected, you can control the robot, view maps, set schedules, and access advanced features through the app.

OPERATING INSTRUCTIONS

1. Starting and Stopping Cleaning

- **Start Cleaning:** Press the power button on the robot or tap "Clean" in the Xiaomi Home app. The robot will automatically map your home and begin cleaning.
- **Pause Cleaning:** Press any button on the robot or tap "Pause" in the app.
- **Resume Cleaning:** Press the power button again or tap "Resume" in the app.
- **Return to Base:** Press the home button on the robot or tap "Recharge" in the app. The robot will return to the self-cleaning base station.

2. Cleaning Modes

The Xiaomi Home app allows you to select various cleaning modes:

- **Vacuum Only:** For dry debris and general vacuuming.
- **Mop Only:** For wet cleaning with mop pads.
- **Vacuum & Mop:** Simultaneous vacuuming and mopping.
- **Area Cleaning:** Select specific rooms or zones on the map to clean.
- **Spot Cleaning:** Direct the robot to clean a specific small area.

3. Advanced Features via Xiaomi Home App

- **Map Management:** View and edit your home's map. Set virtual walls and no-go zones to restrict the robot from certain areas.
- **Scheduled Cleaning:** Set specific times for the robot to clean automatically.
- **Cleaning Preferences:** Adjust suction power, water flow level, and carpet cleaning modes (e.g., vacuum only on carpets, carpet avoidance).

- **Real-time Monitoring:** Monitor the robot's cleaning progress and location in real-time.
- **AI Dirt Recognition:** The robot automatically adjusts its cleaning strategy based on detected dirt types.
- **AI Night Vision:** Enables cleaning in low-light conditions.

MAINTENANCE

Regular maintenance ensures optimal performance and extends the lifespan of your robot vacuum. Always turn off the robot and unplug the base station before performing maintenance.

1. Dustbin and Filter

- **Empty Dustbin:** The self-cleaning base station will automatically empty the dustbin. However, manually check and empty the dustbin if the base station is not used or if the dustbin is full.
- **Clean Filter:** Tap the dustbin to remove loose dirt. Rinse the filter under running water. Ensure it is completely dry before re-installing (allow 24 hours). Replace the filter every 3-6 months, or as needed.

2. Water Tank and Mop Pads

- **Refill Water Tank:** The base station will manage water levels. Ensure the clean water tank in the base station is filled.
- **Clean Mop Pads:** The base station automatically washes and dries the mop pads. Periodically remove and hand wash the mop pads for a deeper clean. Replace mop pads every 1-3 months, depending on usage.

3. Brushes

- **Main Brush:** Remove the main brush cover and lift out the main brush. Use the cleaning tool to remove hair and debris. Check the bearings for any entanglement. Reinstall the brush. Replace every 6-12 months.
- **Side Brush:** Unscrew the side brush and remove any tangled hair or debris. Reattach the brush. Replace every 3-6 months.

4. Sensors and Charging Contacts

- Wipe all sensors (cliff sensors, wall sensors, dToF radar) and charging contacts on both the robot and the base station with a clean, dry cloth.

TROUBLESHOOTING

If you encounter issues with your robot vacuum, refer to the following common problems and solutions:

Problem	Possible Cause	Solution
---------	----------------	----------

Problem	Possible Cause	Solution
Robot does not power on or charge.	Battery depleted; charging contacts dirty; power adapter not connected.	Ensure robot is properly docked. Clean charging contacts. Check power adapter connection.
Robot gets stuck frequently.	Obstacles on floor; low-clearance furniture; cliff sensors dirty.	Clear floor of cables and small items. Use virtual walls in app. Clean cliff sensors.
Poor cleaning performance.	Dustbin full; brushes tangled; filter clogged; low suction setting.	Empty dustbin. Clean main and side brushes. Clean/replace filter. Increase suction power in app.
Robot cannot return to base station.	Base station obstructed; robot too far from base; charging contacts dirty.	Ensure clear path to base. Move robot closer to base. Clean charging contacts.
Mop pads not cleaning effectively or leaving streaks.	Mop pads dirty; water tank empty; low water flow setting.	Clean or replace mop pads. Refill clean water tank. Adjust water flow in app.
App connection issues.	Incorrect Wi-Fi password; 5GHz Wi-Fi network; robot too far from router.	Ensure 2.4GHz Wi-Fi. Re-enter password. Move robot closer to router. Restart robot and router.

SPECIFICATIONS

Feature	Detail
Brand	XIAOMI
Model Number	65238
Part Number	BHR07WEGB
Voltage	240 Volts
Power Source	Battery Powered
Batteries Included	Yes (1 x 12V battery)
Form Factor	Round
Product Dimensions	44.3 x 43.1 x 68.6 cm
Item Weight	15 Kilograms
Surface Recommendation	Multi-surface
Date First Available	23 September 2025


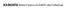



WARRANTY AND SUPPORT

For warranty information and customer support, please refer to the warranty card included with your product or visit the official XIAOMI website. You can also contact XIAOMI customer service for assistance with product inquiries, technical support, or service requests.

Official Website: www.mi.com

© 2025 XIAOMI. All rights reserved.

Related Documents - 5 Pro

	<p>Xiaomi Robot Vacuum E10 User Manual</p> <p>Comprehensive user manual for the Xiaomi Robot Vacuum E10, covering safety instructions, setup, operation, maintenance, troubleshooting, and specifications. Includes detailed descriptions of components and procedures.</p>
	<p>Xiaomi Robot Vacuum S40C User Manual: Setup, Operation, and Maintenance</p> <p>This user manual provides comprehensive instructions for the Xiaomi Robot Vacuum S40C, including safety guidelines, product overview, setup procedures, how-to guides for cleaning and maintenance, troubleshooting common issues, and detailed specifications.</p>
	<p>Xiaomi Robot Vacuum X20 Max User Manual</p> <p>Comprehensive user manual for the Xiaomi Robot Vacuum X20 Max, detailing setup, operation, maintenance, safety guidelines, and specifications for optimal performance of this advanced robotic cleaner.</p>
	<p>Xiaomi Robot Vacuum 5 Pro User Manual - Intelligent Cleaning Guide</p> <p>Comprehensive user manual for the Xiaomi Robot Vacuum 5 Pro, detailing setup, operation, features, maintenance, and troubleshooting for this smart home cleaning device.</p>
	<p>Xiaomi Robot Vacuum S10 User Manual: Setup, Operation, and Maintenance</p> <p>Comprehensive user manual for the Xiaomi Robot Vacuum S10 (Model B106GL). Learn about safety instructions, setup, operation, app connectivity, maintenance, and specifications for your smart home cleaning device.</p>
	<p>Mi Robot Vacuum-Mop 2 Pro User Manual</p> <p>Comprehensive user manual for the Xiaomi Mi Robot Vacuum-Mop 2 Pro, detailing setup, operation, maintenance, and troubleshooting for this smart home cleaning device. Learn about its features, app integration, and specifications.</p>