

SinoTrack ST-907L

SinoTrack 4G Mini GPS Tracker ST-907L Instruction Manual

Model: ST-907L | Brand: SinoTrack

1. INTRODUCTION

This manual provides detailed instructions for the installation, operation, and maintenance of your SinoTrack 4G Mini GPS Tracker ST-907L. This device is designed for real-time tracking of vehicles such as cars, trucks, and motorcycles, offering features like location tracking, route history, and various alerts to enhance vehicle security and management.

2. WHAT'S IN THE BOX

Upon unpacking, please ensure all items are present:

- SinoTrack 4G GPS Tracker (ST-907L) x1
- User Manual x1
- Wiring Harness (Red, Black, Orange, Yellow wires)
- Relay (for remote engine cut-off function)



Figure 2.1: SinoTrack 4G Mini GPS Tracker ST-907L and included relay. The tracker is a compact black device with a wiring harness, and the relay is a black cube with electrical terminals.

3. PRODUCT FEATURES

- **Real-Time Tracking:** Provides instant location updates with high accuracy for personal and fleet use.
- **Route History Playback:** Automatically records and stores comprehensive trip history for review.
- **Geo-Fence Alerts:** Customizable alerts for when the vehicle enters or exits designated areas.
- **Multiple Alarms:** Receive notifications for sudden impacts, vibrations, overspeeding, low battery, and more.

- **Remote Engine Cut-off:** With an optional compatible relay module, authorized users can safely disable the engine when the vehicle is parked or moving below 20 km/h.
- **Built-in Backup Battery:** Features a 3.7V, 50mAh backup battery for continued operation.
- **Waterproof Design:** Suitable for various environmental conditions.
- **4G (LTE) Network Support:** Utilizes 4G network for reliable connectivity.



Figure 3.1: Visual representation of key features including Real-time Tracking, History Route Playback, Relay to Remote Cut-off, Geo-fence, Shocking Alarm, Sleep Mode, Built-in Battery, and Overspeed Alarm.

4. SETUP INSTRUCTIONS

4.1. SIM Card Activation and Insertion

The tracker requires a local 4G (LTE) SIM card (not included). We recommend using SpeedTalk SIM cards; T-Mobile SIM cards are not compatible.

1. Purchase a local SIM card with 4G (LTE) network functionality.
2. Install the new SIM card into your mobile phone to activate it and remove any PIN code. Ensure it can

make calls, send texts, and has an internet connection.

3. Once confirmed, insert the activated SIM card into the tracker.

Video 4.1: This video demonstrates the process of inserting a SIM card into a SinoTrack GPS tracker and powering it on. It shows the physical insertion of the SIM card and the initial charging and activation steps.

4.2. Powering On the Tracker

1. Charge the device for approximately 1 hour.
2. The yellow and blue indicator lights will flash as the device searches for network and GPS signals.
3. Place the device in an area with good reception (e.g., near a window or outdoors) and wait for about 5 minutes until both lights remain constantly on. If the yellow light continues to flash, move to a different location.

4.3. Setting APN (Access Point Name)

APN settings are crucial for internet connectivity. You will need your SIM card provider's APN details.

1. Identify your SIM card's APN (contact your provider if unsure).
2. Send an SMS command from another phone to the tracker's SIM card number to set the APN.
3. **If your APN has no username or password:** Send 8030000 [APN] (e.g., 8030000 everywhere). The tracker should reply with "SET OK".
4. **If your APN has a username and password:** Send 8030000 [APN] [APN user] [APN pass] (e.g., 8030000 everywhere eesecure secure).

4.4. Setting GPRS Mode

To enable online tracking, set the GPRS mode:

1. Send the SMS command 7100000 to the device.
2. Wait approximately 30 seconds. Both blue and orange lights should stay ON, indicating the tracker is active and ready for online login.

4.5. Wiring and Installation

The ST-907L is designed for hardwired installation in your vehicle. Professional installation is recommended for the remote engine cut-off function.

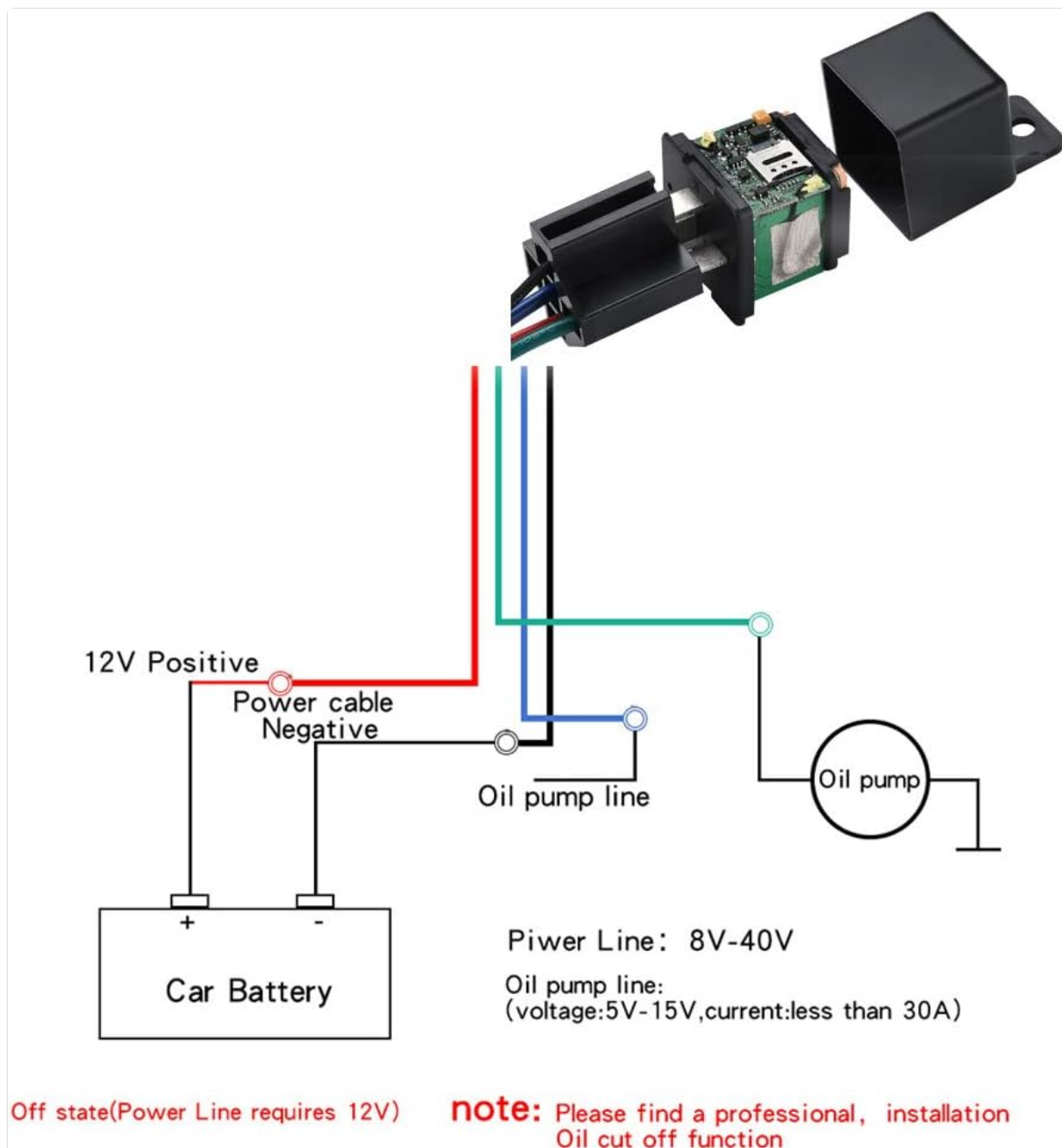


Figure 4.1: Wiring diagram for the SinoTrack ST-907L. The orange wire connects to ACC, black to power negative (-), red to power positive (+), and yellow to the relay for the oil pump line. Power line input is 8V-40V, oil pump line voltage 5V-15V, current less than 30A.

- **Orange wire:** Connect to ACC (Accessory power, live when ignition is on).
- **Black wire:** Connect to Power "-" (Negative terminal of the battery).
- **Red wire:** Connect to Power "+" (Positive terminal of the battery).
- **Yellow wire:** Connect to the Relay (for remote engine cut-off).

Important Note: The GPS antenna should face upwards towards the sky for optimal signal reception. Avoid placing the device under metal, as this can significantly degrade or block the GPS signal.

Video 4.2: This video demonstrates the installation of a GPS tracker by connecting it to a car's battery terminals. It shows cleaning the battery, loosening terminals, attaching the tracker's wires (red to positive, black to negative), tightening terminals, and securing the tracker with adhesive.

Video 4.3: This video provides an overview of the SinoTrack ST-901L 4G tracker with relay, showcasing its components and basic setup steps. It highlights the tracker, relay, and wiring harness.

5. OPERATING THE TRACKER

5.1. Accessing the Tracking Platform

Once the device is set up and online, you can access its features via the SinoTrack PRO web platform or mobile application (available for iOS and Android).

- **Web Platform:** Visit the SinoTrack PRO website.
- **Mobile App:** Download "SinoTrack PRO" from the App Store or Google Play.
- **Login:** Use your tracker's ID number (written on the product) as the username and "123456" as the default password.

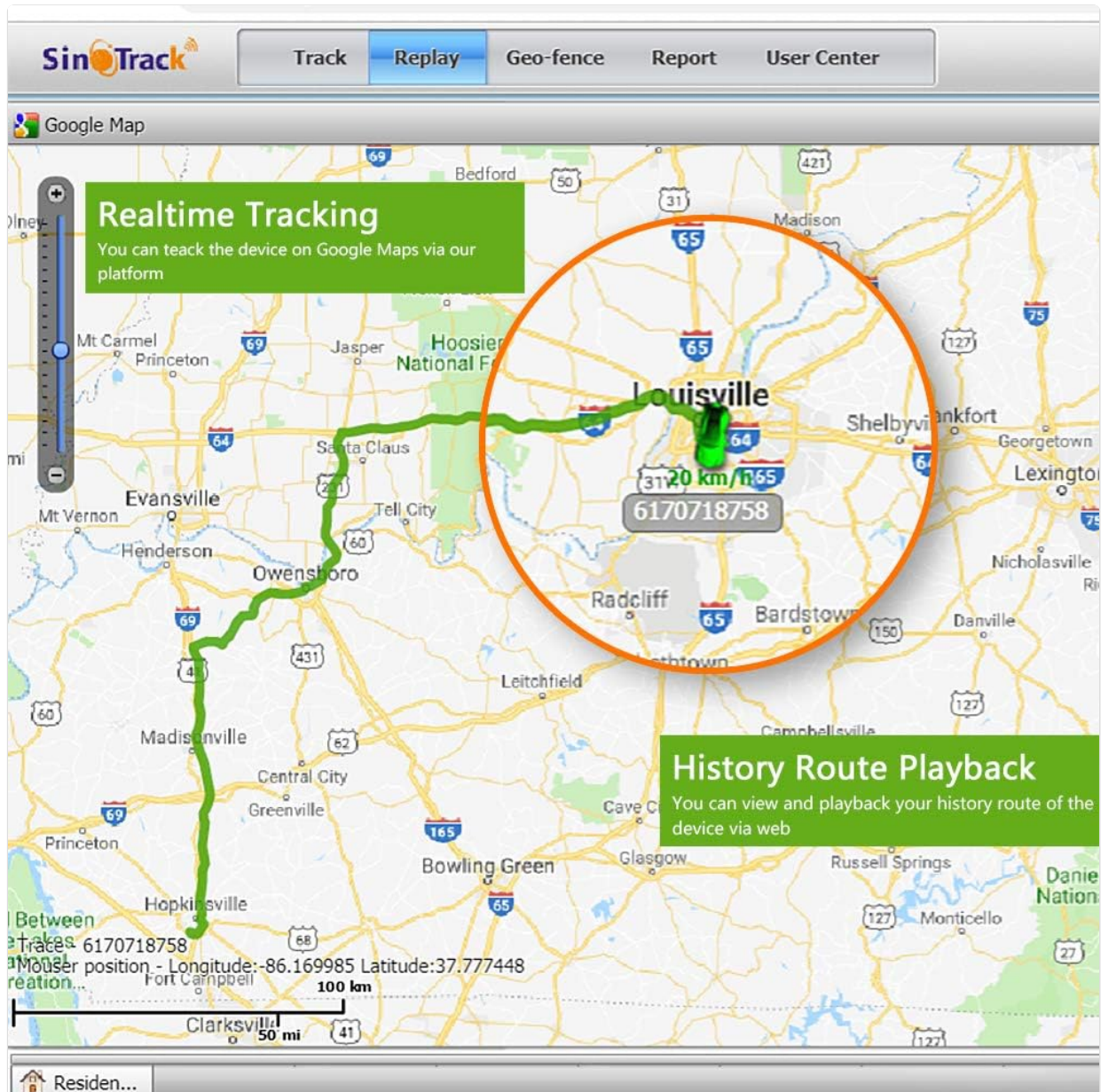


Figure 5.1: Screenshot of the SinoTrack web platform showing real-time tracking and history route playback features on a map interface.



Figure 5.2: Screenshots of the SinoTrack mobile application displaying real-time tracking and geofence functionalities.

5.2. Real-Time Tracking

View your vehicle's current location on a map with precise accuracy. The platform provides continuous updates on the vehicle's position.

5.3. History Route Playback

Access detailed historical data of your vehicle's movements. You can review past routes, speeds, and stops over a selected period.

5.4. Geo-Fence Alerts

Set up virtual boundaries (geo-fences) on the map. You will receive instant notifications when the tracker enters or exits these predefined areas. This is useful for monitoring vehicle usage within specific zones.

5.5. Remote Engine Cut-off

If the optional relay module is installed and compatible, you can send a command to safely disable the engine. This function is designed to work when the vehicle is parked or moving at low speeds (below 20 km/h) to ensure safety. The system initiates a gradual stop within 10-20 seconds.

Video 5.1: This video demonstrates the remote control features of a SinoTrack GPS tracker, including the ability to cut off the engine's oil and power. It shows the tracker's components and the remote functionality.

5.6. Other Alerts

Configure various alerts to stay informed about your vehicle's status:

- **Overspeed Alert:** Notifies you when the vehicle exceeds a preset speed limit.
- **Shocking/Vibration Alert:** Informs you of sudden impacts or unusual vibrations.
- **Low Battery Warning:** Alerts you when the tracker's internal backup battery is low.

6. MAINTENANCE

The SinoTrack ST-907L is designed for low maintenance. Key considerations include:

- **Power Supply:** Ensure the device is continuously connected to the vehicle's power supply to keep the internal backup battery charged.
- **Waterproof:** The device is waterproof, but avoid submerging it in water or exposing it to extreme conditions beyond its rating.
- **Cleaning:** Periodically clean the exterior of the device with a soft, dry cloth. Do not use harsh chemicals.

7. TROUBLESHOOTING

7.1. Device Not Online

If the device is not showing online on the platform:

1. Send the SMS command RCONF to the device.
2. Check the reply for the following:
 - Verify the APN settings are correct.
 - Confirm the IP and Port are correct (refer to the user manual for correct values).
 - Ensure the device is in GPRS working mode.

7.2. Incorrect Location (Showing China)

If the device is online but shows a location in China:

- Take the device to an outdoor area with good GPS signal reception. The location will update once a strong GPS signal is acquired.

7.3. GPS Signal Issues

The device's GPS antenna requires an unobstructed view of the sky. Avoid placing it under metal components of the vehicle, as this can significantly degrade or block the GPS signal.

7.4. Battery Drain (Parasitic Draw)

Like most electronic devices connected to a vehicle's battery, the tracker will draw a small amount of power. If the vehicle is parked for extended periods without use, this could potentially lead to battery drain. Consider disconnecting the tracker or using a battery maintainer for long-term storage.

8. SPECIFICATIONS



Product Dimensions	1.22 x 2.24 x 1.22 inches
---------------------------	---------------------------





Item Weight	1.76 ounces
Item Model Number	US-ST-907L
Batteries	1 Lithium Polymer battery required (included)
Connectivity Technologies	GPS, LTE
Special Features	Waterproof, Cut Engine Off, Real Time Tracking, Alert Notification, Geo-Fence, History Route Playback, Rechargeable
Supported Application	SinoTrack PRO (iOS, Android, Web APP)
Specific Uses For Product	GPS tracker for car, car alarms, car anti-lost alarm tracker

9. WARRANTY AND SUPPORT

For any product inquiries, technical support, or warranty information, please contact SinoTrack customer service. Refer to the product packaging or the official SinoTrack website for the most up-to-date contact details.

Related Documents - ST-907L

 <p>ST-901 4PIN (ST-901L 4G) دليل المستخدم</p>	<p>SinoTrack ST-901 4PIN GPS Tracker (ST-901L 4G) User Manual</p> <p>Comprehensive user manual for the SinoTrack ST-901 4PIN and ST-901L 4G GPS trackers. This guide covers quick setup, web and mobile tracking, SIM card installation, LED status indicators, wiring instructions, and a full list of SMS commands for configuring features like geo-fencing, speed alerts, battery warnings, ACC ignition alerts, remote engine cut-off, APN settings, IP/Port configuration, and time interval reporting. Learn how to effectively monitor and manage your vehicle with the SinoTrack GPS device.</p>
 <p>GPS Tracker ST-901 (ST-901L - 4G 4PIN) User Manual</p>	<p>SinoTrack ST-901L 4G 4PIN GPS Tracker User Manual & Installation Guide</p> <p>Comprehensive user manual for the SinoTrack ST-901L 4G 4PIN GPS Tracker, covering quick start, installation, SMS commands, online tracking, and advanced functions for optimal device operation and vehicle monitoring.</p>

<p>SinoTrack GPS TRACKER USER MANUAL</p>  <p>PREFACE</p> <p>Thank you for purchasing SinoTrack GPS tracker. This manual shows how to operate the device properly to obtain precise location data to track the vehicle position before using the device. Please be noted that any update of this manual is made without prior notice. Each time the update of the manual will be released in the latest product version. This manual is for reference only. We will not be responsible for any error or omission made in this manual.</p>	<p>SinoTrack GPS Tracker User Manual - Models ST-903 & ST-904</p> <p>Comprehensive user manual for SinoTrack GPS Trackers ST-903 and ST-904, covering setup, SMS tracking, alarm settings, online tracking, and troubleshooting for accurate real-time location monitoring.</p>
<p>SinoTrack GPS TRACKER ST-904/ST-904L 4G User Manual</p> 	<p>SinoTrack GPS Tracker ST-904/ST-904L 4G User Manual</p> <p>Comprehensive user manual for the SinoTrack ST-904 and ST-904L 4G GPS trackers, covering setup, operation, online tracking, SMS commands, and troubleshooting for accurate real-time location monitoring.</p>
<p>Brugervejledning SinoTrack ST-915 ST-925</p>  <p>SinoTracker model list is as follows: ST-915 model max 1024 m/s; Standard 100 ST-925 model max 1024 m/s; Standard 100</p> <p>ST-915/925</p>	<p>SinoTrack ST-915/ST-925 GPS Tracker User Manual</p> <p>Comprehensive user manual for SinoTrack ST-915 and ST-925 GPS trackers, covering product specifications, setup instructions, alarm configurations, online tracking, GEO-fencing, and troubleshooting.</p>
<p>GPS Tracker ST-901 (ST-901W/SG4G) User Manual</p> 	<p>Sinotrack ST-901 GPS Tracker User Manual & Setup Guide (3G/4G)</p> <p>Comprehensive user manual for the Sinotrack ST-901 and ST-901W 3G/4G GPS trackers, covering quick start, installation, SMS commands for configuration, online tracking, and mobile app usage.</p>