

[Manuals.plus](#) /

> [ALDIPRO](#) /

> ALDIPRO Cordless 20V 12" Electric String Trimmer (AD-ST-002) User Manual

ALDIPRO AD-ST-002

ALDIPRO Cordless 20V 12" Electric String Trimmer (AD-ST-002) User Manual

Model: AD-ST-002

1. IMPORTANT SAFETY INFORMATION

Always read and understand all safety warnings and instructions before operating this product. Failure to follow the warnings and instructions may result in electric shock, fire, and/or serious injury.

- Always wear eye protection, long pants, and closed-toe shoes when operating the string trimmer.
- Keep a safe distance from others, especially children and pets, while operating the tool.
- Do not trim near flammable materials or liquids.
- Ensure the battery is fully charged before use and properly installed.
- Never operate the trimmer with damaged or missing guards.

2. PRODUCT OVERVIEW

The ALDIPRO Cordless 20V 12" Electric String Trimmer (AD-ST-002) is a versatile 3-in-1 tool designed for trimming, edging, and light lawn mowing. It features an automatic line feed system, a powerful motor, and a lightweight, adjustable design for comfortable use.



Image: The ALDIPRO Cordless 20V 12" Electric String Trimmer with battery and charger.

Key Features:

- **3-In-1 Functionality:** Easily switches between trimmer, edger, and lawn mower modes.
- **Automatic Line Feed:** Automatically releases 0.1-0.3 inches of new line each time the machine is turned on.
- **Extended Runtime:** Includes 2 x 2.0Ah lithium-ion batteries for over 70 minutes of continuous trimming (no load).
- **Fast Charging:** UL-certified charger provides a full charge in approximately 60 minutes.
- **Detachable & Adjustable Structure:** Innovative pole design allows for adjustable length and easy storage.
- **Flexible Adjustment:** Head rotates 180°, adjusts 60° up and down, and the handle swivels 180° for various trimming angles.

3. PACKAGE CONTENTS

Verify that all items are present upon unpacking:

- 1 x Cordless String Trimmer
- 1 x Fast Charger
- 2 x 2.0Ah Lithium-Ion Battery
- 1 x User Manual
- 6 x Replacement Line

4. ASSEMBLY INSTRUCTIONS

Follow these steps to assemble your ALDIPRO Cordless String Trimmer:

1. Connect the main shaft sections. Ensure they click securely into place.
2. Attach the auxiliary handle to the desired position on the shaft and tighten the knob.
3. Install the safety guard onto the trimmer head. Secure it with the provided screws.
4. Remove the protective film from the cutting blade on the safety guard.

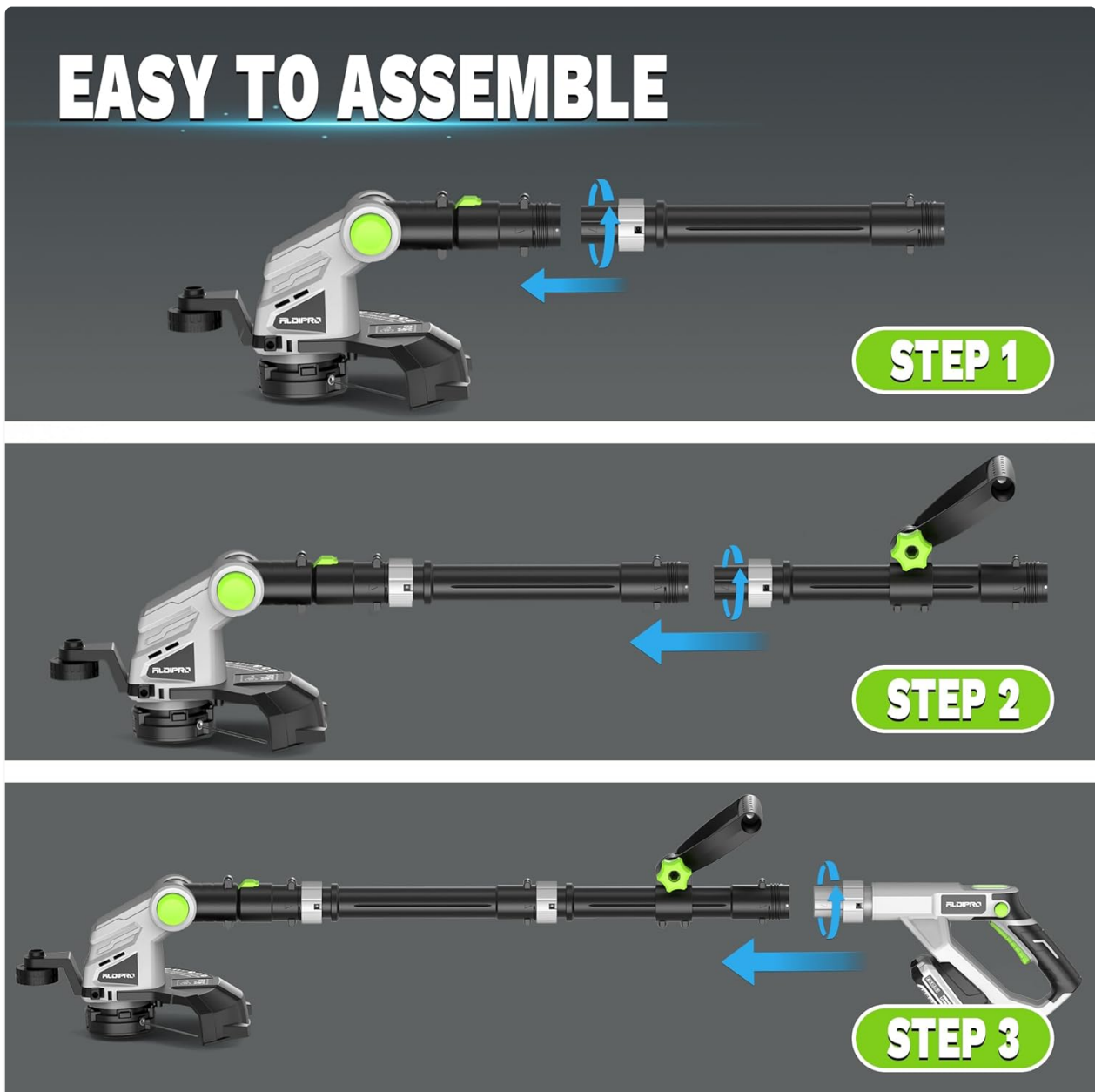


Image: Visual guide showing the three main steps for assembling the string trimmer: connecting shaft sections, attaching the handle, and securing the trimmer head.

Your browser does not support the video tag.

Video: A detailed demonstration of the assembly process for the ALDIPRO Cordless String Trimmer.

5. OPERATING INSTRUCTIONS

5.1 Battery Charging and Installation

Before first use, fully charge both 2.0Ah lithium-ion batteries. The UL-certified fast charger can charge a battery in approximately 60 minutes.

1. Connect the fast charger to a power outlet.
2. Slide the battery onto the charger until it clicks into place. The charger will indicate charging status.
3. Once fully charged, remove the battery from the charger.
4. To install the battery into the trimmer, align the battery with the battery slot on the handle and slide it in until it locks securely.



Image: The UL-listed fast charger and two 20V 2000mAh lithium-ion batteries.

5.2 3-in-1 Functionality (Trimmer, Edger, Mower)

The trimmer can be easily converted between three modes:

- **Trimmer Mode:** For cutting grass and weeds in open areas.
- **Edger Mode:** Rotate the trimmer head 90 degrees to create clean edges along sidewalks and driveways.
- **Mower Mode:** Adjust the wheel for a consistent cutting height for light lawn mowing tasks.



Image: Illustration of the ALDIPRO string trimmer demonstrating its use as a trimmer, edger, and mower.

5.3 Automatic Line Feed

The automatic line feeding system ensures a continuous cutting line. Each time the machine is turned on, it automatically releases approximately 0.1-0.3 inches of new line. This eliminates the need for manual bumping or adjustments during operation.



Image: Diagram showing the automatic line feed spool mechanism in action, extending the cutting line.

5.4 Adjustable Features

Customize the trimmer for optimal comfort and control:

- **Head Rotation:** The trimmer head can be rotated 180° for edging tasks.
- **Head Angle Adjustment:** Adjust the head 60° up and down to reach various angles and under obstacles.
- **Handle Swivel:** The auxiliary handle can swivel 180° for improved ergonomics and control during operation.
- **Adjustable Length:** The innovative pole design allows for length adjustment to suit users of different heights and for compact storage.

FLEXIBLE APPLICATION



Image: Demonstrates the flexible application of the trimmer, highlighting the 180° head rotation, 60° up/down adjustment, and 180° handle swivel.

6. MAINTENANCE

Regular maintenance ensures optimal performance and extends the life of your string trimmer:

- **Cleaning:** After each use, clean the trimmer head and guard to remove grass clippings and debris. Use a damp cloth; do not use harsh chemicals.
- **Line Replacement:** When the cutting line runs out, replace it with the specified nylon line (diameter 0.065"). Refer to the manual for detailed instructions on how to replace the line spool.
- **Battery Care:** Store batteries in a cool, dry place away from direct sunlight. Do not store fully discharged batteries for extended periods.
- **Storage:** Store the trimmer in a dry, secure location, out of reach of children. The detachable structure allows for compact storage.

7. SPECIFICATIONS

Feature	Specification
Brand	ALDIPRO
Model	AD-ST-002
Power Source	Battery Powered (20V)
Battery Type	Lithium Ion (2 x 2.0Ah included)
Charging Time	Approx. 60 minutes (Fast Charger)
Cutting Width	12 Inches
No Load Speed	Up to 8500 RPM
Item Weight	4 Pounds
Product Dimensions	50"L x 12"W
Assembly Required	Yes

8. WARRANTY AND SUPPORT

For warranty information, technical support, or to purchase replacement parts, please refer to the contact information provided in your product packaging or visit the official ALDIPRO website. Keep your purchase receipt as proof of purchase for warranty claims.