

7MAGIC 7MAGIC 999 Flat Iron

7MAGIC Hair Straightener User Manual

Model: 7MAGIC 999 Flat Iron

Brand: 7MAGIC

INTRODUCTION

This manual provides comprehensive instructions for the safe and effective use of your 7MAGIC Hair Straightener. Please read this manual thoroughly before first use and retain it for future reference. This professional 2-in-1 styling tool is designed to provide fast heat-up, anti-frizz ionic technology, and floating plates for smooth, shiny hair on all hair types.



Image: The 7MAGIC Hair Straightener in Midnight Blue, displayed alongside its product packaging.

PRODUCT FEATURES

- **Temperature Control:** Features 11 precise settings from 270°F to 450°F, suitable for all hair types. An LCD display allows for easy temperature monitoring and adjustment.

LCD Screen with 11 Temperature Settings

For all hair types



450°F - 430°F

Coarse, thick hair



410°F - 375°F

Fine, soft hair



355°F - 320°F

Fine, soft hair



300°F - 265°F

Natural bends, gentle curls



Image: Close-up of the hair straightener's LCD screen displaying temperature settings, with examples for different hair types (coarse, fine, natural bends).

- **2-IN-1 Styling:** Designed for both straightening and curling, enabling versatile hair styling from sleek straight looks to waves and curls.

Versatile 2-In-1 Styler

Flexible styling for straight or curly looks



Wavy Style



Smooth Finish

Image: A split image showing a model with wavy hair on one side and the same model with smooth, straight hair on the other, demonstrating the 2-in-1 styling capability.

- **Fast PTC Heating:** Utilizes PTC rapid heating technology, reaching desired temperatures in approximately 30 seconds. Ceramic plates ensure even heat distribution.

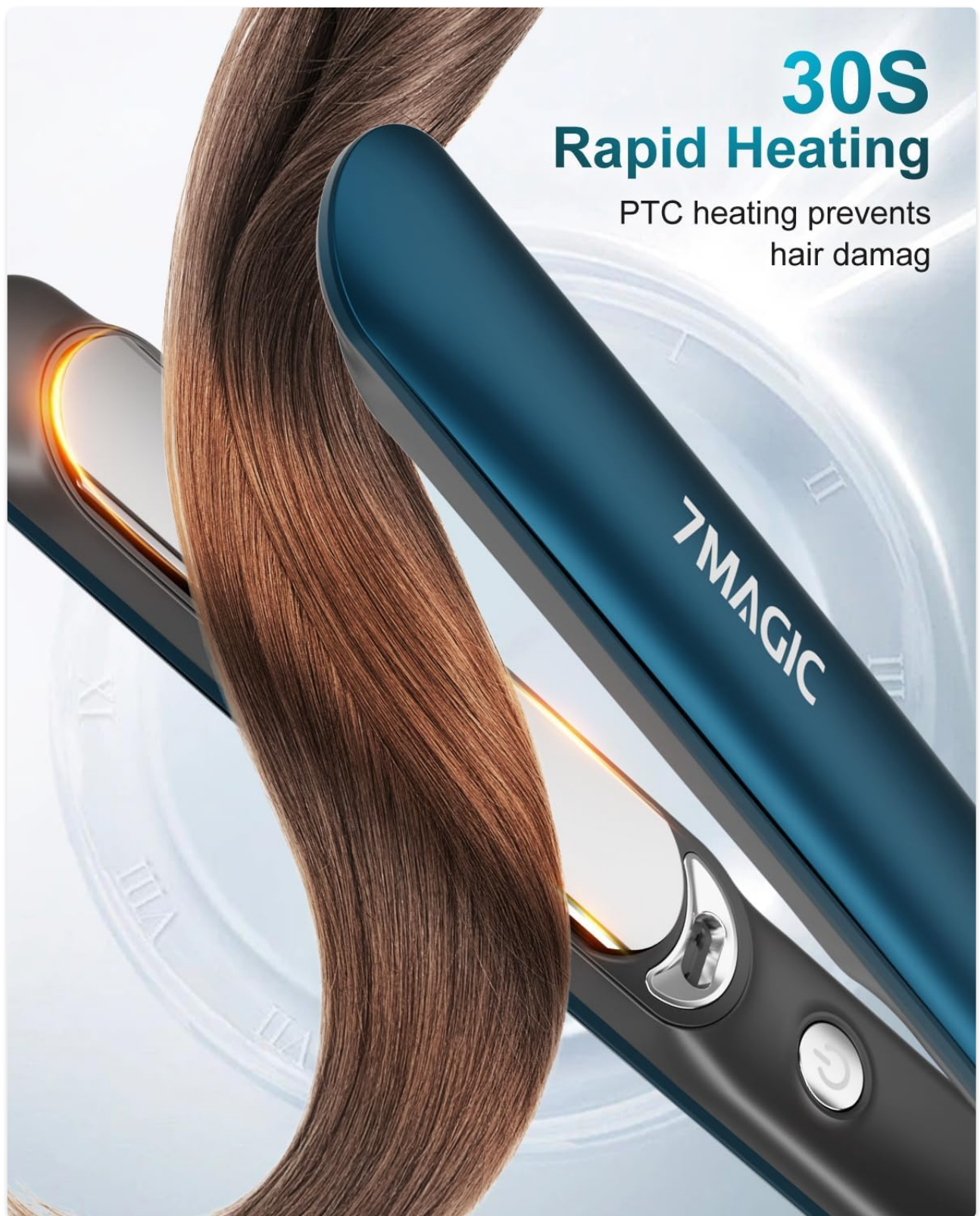


Image: A close-up of the hair straightener with hair strands, highlighting the '30S Rapid Heating' feature and PTC heating technology.

- **Ionic Technology:** An integrated ion generator releases 20 million negative ions per use to reduce frizz and static, enhancing moisture, smoothness, and shine.

20 Million Negative Ions

Combat frizz and static
for smooth, shiny hair



Image: A woman using the hair straightener, with visual effects representing negative ions being emitted to combat frizz and static.

- **3D Floating Plates:** Plates conform to hair contours, minimizing tugging and ensuring a smoother glide.

3D Floating Plates

Enjoy smooth gliding without
snagging your hair



Image: A diagram illustrating the movement of the 3D floating plates, showing how they adjust to hair for smooth gliding.

- **60-Minute Auto Shut-off:** For enhanced safety and energy efficiency.
- **Safety Lock Function:** Prevents accidental opening for easy storage and travel.

SETUP

1. **Unpacking:** Carefully remove the hair straightener and all accessories from the packaging. Inspect the device for any signs of damage.
2. **Initial Inspection:** Ensure the power cord is intact and free from kinks or damage. Verify that the plates are

clean and free of debris.

3. **Power Connection:** Plug the power cord into a standard electrical outlet. Ensure the voltage matches the requirements specified on the product label.

OPERATING INSTRUCTIONS

Powering On/Off

- To turn on, press and hold the power button until the LCD display illuminates.
- To turn off, press and hold the power button again until the display turns off. The device also features a 60-minute auto shut-off for safety.

Temperature Adjustment

- Use the '+' and '-' buttons to adjust the temperature. The LCD display will show the current temperature.
- Refer to the following guidelines for temperature selection:
 - **270°F - 320°F:** For delicate, fine, or chemically treated hair.
 - **320°F - 375°F:** For normal, easy-to-straighten hair.
 - **375°F - 450°F:** For thick, coarse, or very curly hair.

Straightening Hair

1. Ensure hair is clean, dry, and detangled. Apply a heat protectant spray if desired.
2. Divide hair into small, manageable sections (approximately 1-2 inches wide).
3. Take one section and place it between the heating plates, close to the roots.
4. Gently close the plates and glide the straightener slowly and steadily down the hair section from root to tip. Do not hold the straightener in one place for too long.
5. Repeat for all sections until desired straightness is achieved.

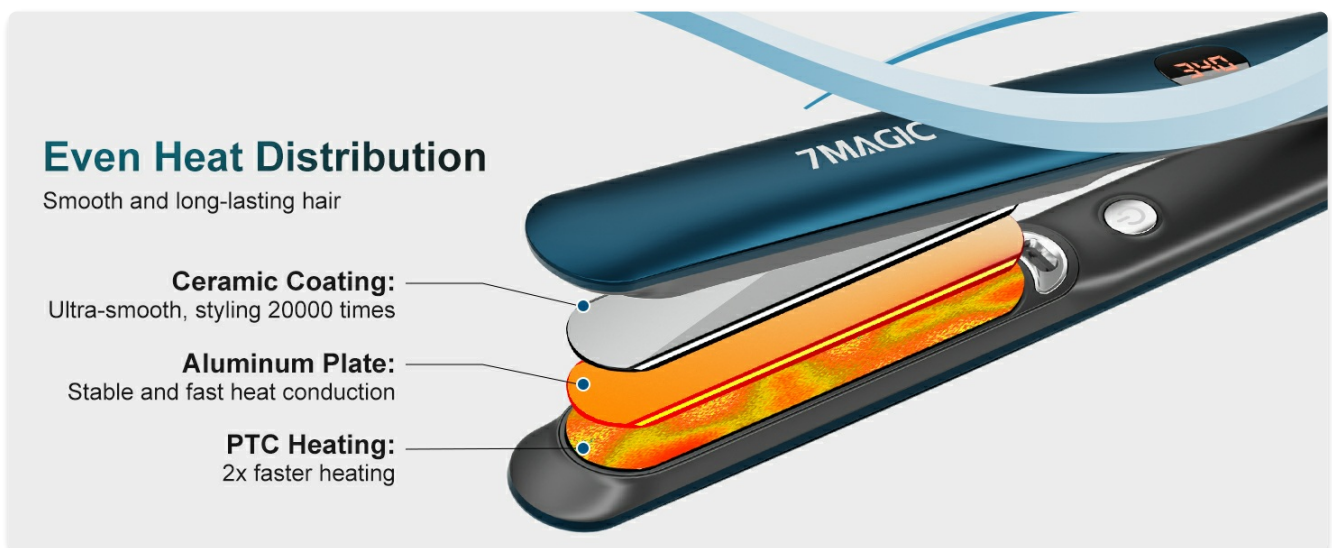


Image: A visual guide demonstrating the technique for achieving perfectly straight hair using the flat iron.

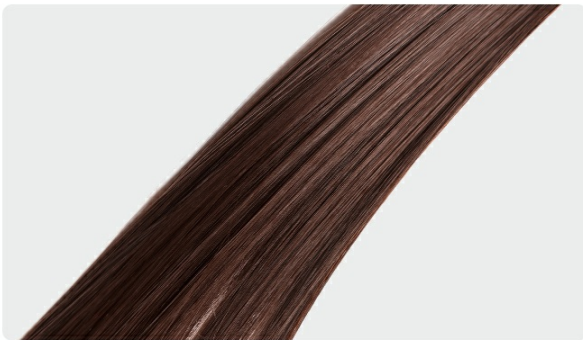
Curling Hair

1. Ensure hair is clean, dry, and detangled. Apply a heat protectant spray if desired.
2. Divide hair into small, manageable sections.

3. Take one section and clamp the straightener near the roots.
4. Rotate the straightener 180 degrees away from your face, then slowly pull it down through the hair section, maintaining the rotation.
5. Release the hair and allow the curl to cool and set. Repeat for all sections.

Perfectly Straight Hair

Glide down slowly, then straighten hair section by section



Effortlessly Create Beach Waves

Wrap a small section of hair around the straightener, then glide down slowly

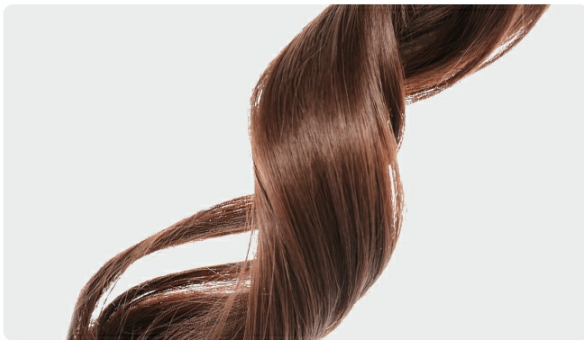


Image: A visual guide demonstrating the technique for creating beach waves using the flat iron.

Safety Lock Function

- To lock the plates together for storage, locate the lock switch near the hinge and slide it to the 'locked' position.
- To unlock, slide the switch back to the 'unlocked' position.

MAINTENANCE

- **Cleaning:** Ensure the device is unplugged and completely cool before cleaning. Wipe the ceramic plates and exterior with a soft, damp cloth. Do not use abrasive cleaners or immerse the device in water.
- **Storage:** Store the straightener in a cool, dry place, away from direct sunlight and moisture. Use the safety lock function to keep the plates closed for compact storage. Do not wrap the power cord tightly around the device.

TROUBLESHOOTING

Problem	Possible Cause	Solution
Device does not turn on.	Not plugged in correctly; Power outlet issue; Device malfunction.	Ensure plug is fully inserted. Test outlet with another device. If problem persists, contact customer support.
Device not heating up.	Power issue; Internal heating element malfunction.	Check power connection. Ensure temperature is set. If no heat, contact customer support.
Hair is snagging or pulling.	Hair not detangled; Plates are dirty; Improper technique.	Ensure hair is fully detangled. Clean plates. Use smaller sections and glide smoothly.
Hair is still frizzy after styling.	Temperature too low; Not using ionic feature effectively; Humidity.	Increase temperature if hair type allows. Ensure plates are clean. Consider using anti-frizz products.

SPECIFICATIONS

- **Model Number:** 7MAGIC 999 Flat Iron
- **Product Dimensions:** 11 x 1.2 x 1.2 inches
- **Weight:** 1.17 Pounds
- **Material:** Ceramic plates
- **Color:** Midnight Blue
- **Manufacturer:** 7MAGIC

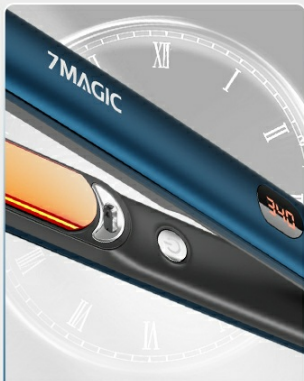
SAFETY INFORMATION

Please observe the following safety precautions to reduce the risk of injury or damage:

- Always unplug the appliance immediately after use and before cleaning.
- Do not use while bathing or in a shower.
- Do not place or store appliance where it can fall or be pulled into a tub or sink.
- Do not place in or drop into water or other liquid.
- Do not reach for an appliance that has fallen into water. Unplug immediately.
- Close supervision is necessary when this appliance is used by, on, or near children or individuals with certain disabilities.
- Use this appliance only for its intended use as described in this manual. Do not use attachments not recommended by the manufacturer.
- Never operate this appliance if it has a damaged cord or plug, if it is not working properly, or if it has been dropped or damaged, or dropped into water.
- Keep the cord away from heated surfaces. Do not wrap the cord around the appliance.
- Never use while sleeping.
- Never drop or insert any object into any opening.
- Do not use outdoors or operate where aerosol (spray) products are being used or where oxygen is being administered.
- The appliance is hot when in use. Do not let eyes or bare skin touch heated surfaces.
- Do not place the heated appliance directly on any surface while it is hot or plugged in.
- This appliance has a polarized plug (one blade is wider than the other). As a safety feature, this plug will fit in a polarized outlet only one way. If the plug does not fit fully in the outlet, reverse the plug. If it still does not fit, contact a qualified electrician. Do not attempt to defeat this safety feature.
- The 60-minute auto shut-off feature is for safety, but always unplug the device when not in use.



Multi-layer Heat-insulated Plates
Prevent skin burns from high temperatures



60min Auto Shut-off
Safety and energy efficiency



User-Friendly
Lightweight and effortless



Safety Lock Function
Prevents accidental opening for easy storage

Image: A visual representation of key safety and design features, including multi-layer heat-insulated plates, 60-minute auto shut-off, user-friendly design, and safety lock function.

WARRANTY AND SUPPORT

Specific warranty details and direct customer support contact information are not provided within this manual. For warranty claims, technical support, or further inquiries, please refer to the product packaging or visit the official 7MAGIC brand store or website. Keep your purchase receipt as proof of purchase.

You can visit the 7MAGIC Store at: [7MAGIC Amazon Store](#)

© 2025 7MAGIC. All rights reserved.

Related Documents

	<p>4-in-1 Multifunction Milk Frother MF0801 User Manual</p> <p>User manual for the 4-in-1 Multifunction Milk Frother, model MF0801. Includes setup, features, settings, tips, cleaning instructions, and warranty information.</p>
	<p>7MAGIC Vacuum Sealer Operating Instructions</p> <p>Comprehensive guide for the 7MAGIC Vacuum Sealer, covering operating instructions, safety guidelines, maintenance, and food preservation tips.</p>