

POWERTEC 71982

POWERTEC PRO Large Format Tile Cutter

Model: 71982 - Instruction Manual

INTRODUCTION

Thank you for choosing the POWERTEC PRO Large Format Tile Cutter. This manual provides essential information for the safe and effective operation, assembly, maintenance, and troubleshooting of your new tile cutter. Designed for professional tilers and contractors, this tool is engineered to handle large tiles and slabs up to 140 inches, making it suitable for a wide range of applications including expansive flooring and intricate countertop designs. It is capable of cutting various materials such as ceramic, porcelain, marble, and granite with a thickness range of 3-12mm.

SAFETY INFORMATION

Always read and understand all safety warnings and instructions before operating this tool. Failure to follow the warnings and instructions may result in serious injury.

- **Wear appropriate personal protective equipment (PPE):** Always wear safety glasses, gloves, and sturdy footwear when operating the tile cutter.
- **Work area safety:** Keep your work area clean, well-lit, and free of clutter. Ensure adequate space for handling large tiles.
- **Secure the workpiece:** Always ensure the tile or slab is stable and properly supported before scoring and breaking.
- **Handle sharp components with care:** The scoring wheel and broken tile edges are sharp. Exercise caution to prevent cuts.
- **Keep children and bystanders away:** Do not allow unauthorized persons near the tool during operation.
- **Inspect the tool before use:** Check for any damaged parts, loose connections, or wear. Do not operate if the tool is damaged.
- **Use the correct scoring wheel:** Ensure the 114-degree titanium-coated tungsten carbide scoring wheel (22mm) is properly installed and in good condition.

PACKAGE CONTENTS

Carefully unpack all components and verify that you have received all items listed below. If any parts are missing or damaged, contact POWERTEC customer support.

- 2 x 59" Base Guide Rails
- 1 x 31.5" Base Guide Rail
- 1 x Scoring Carriage with Ø22 mm Scoring Wheel

- 1 x Tile Breaker Plier
- 2 x Positioning Fixtures
- 2 x Base Guide Rail Clamps
- 1 x Carrying Bag



Image: All components of the POWERTEC PRO Large Format Tile Cutter, including guide rails, scoring carriage, tile breaker, clamps, and carrying bag.

COMPONENTS OVERVIEW

Familiarize yourself with the main parts of the POWERTEC PRO Large Format Tile Cutter:

- **Guide Rail:** The aluminum track along which the scoring carriage glides. Composed of multiple sections for extended length.
- **Scoring Carriage:** The assembly that holds the scoring wheel and moves along the guide rail.
- **Carriage Handle:** Ergonomic handle on the scoring carriage for comfortable grip and control.
- **Grip Knob:** Additional knob on the scoring carriage for enhanced control during scoring.
- **Tungsten Carbide Scoring Wheel:** The cutting wheel (Ø22 mm, 114-degree titanium-coated) that scores the tile surface.
- **Positioning Fixture:** Used to secure the tile and ensure accurate alignment with the guide rail.
- **Guide Rail Clamp:** Secures the guide rail to the tile or work surface.
- **Tile Breaker Plier:** A separate tool used to cleanly separate the tile after it has been scored.

POWERTEC®

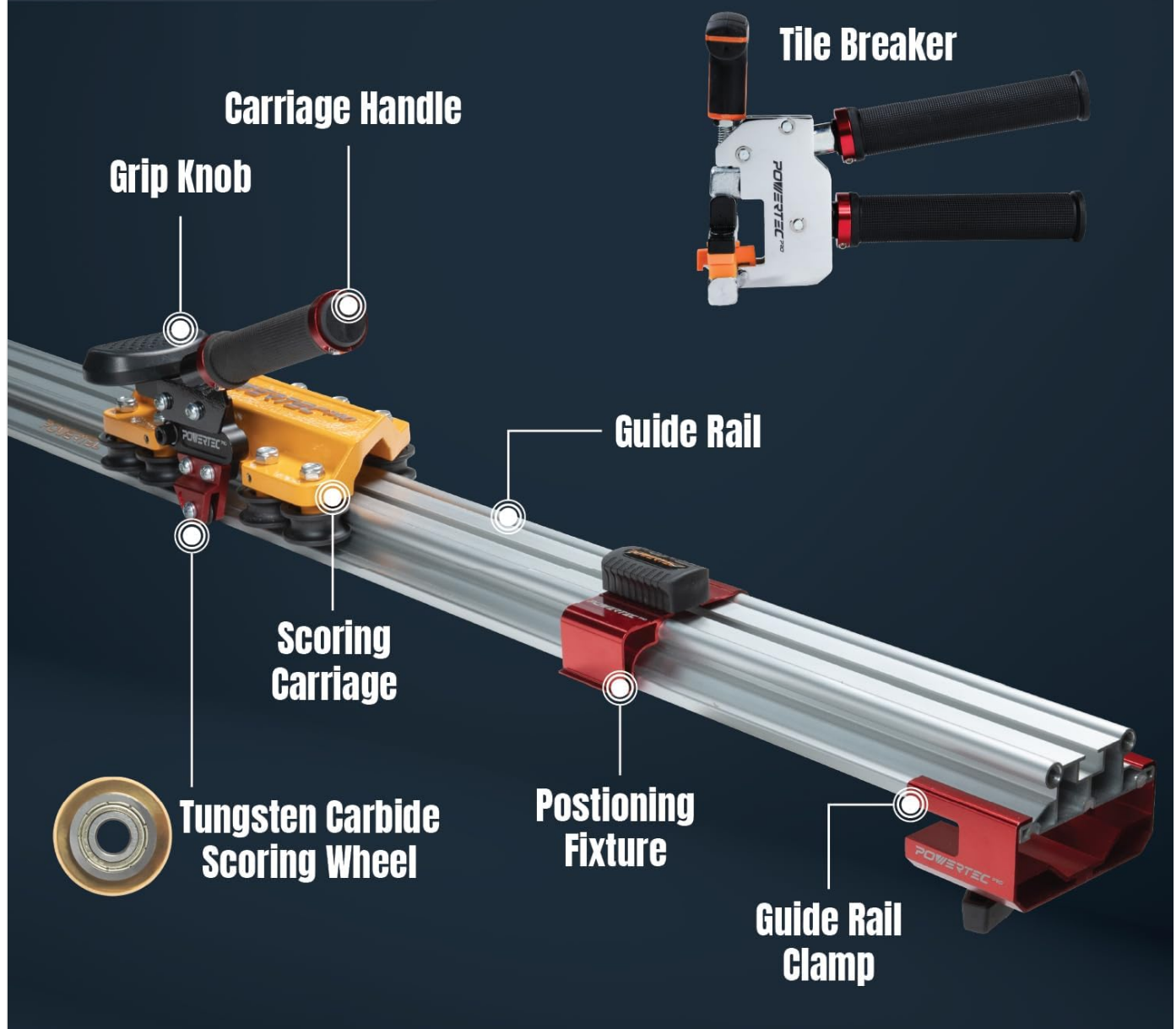


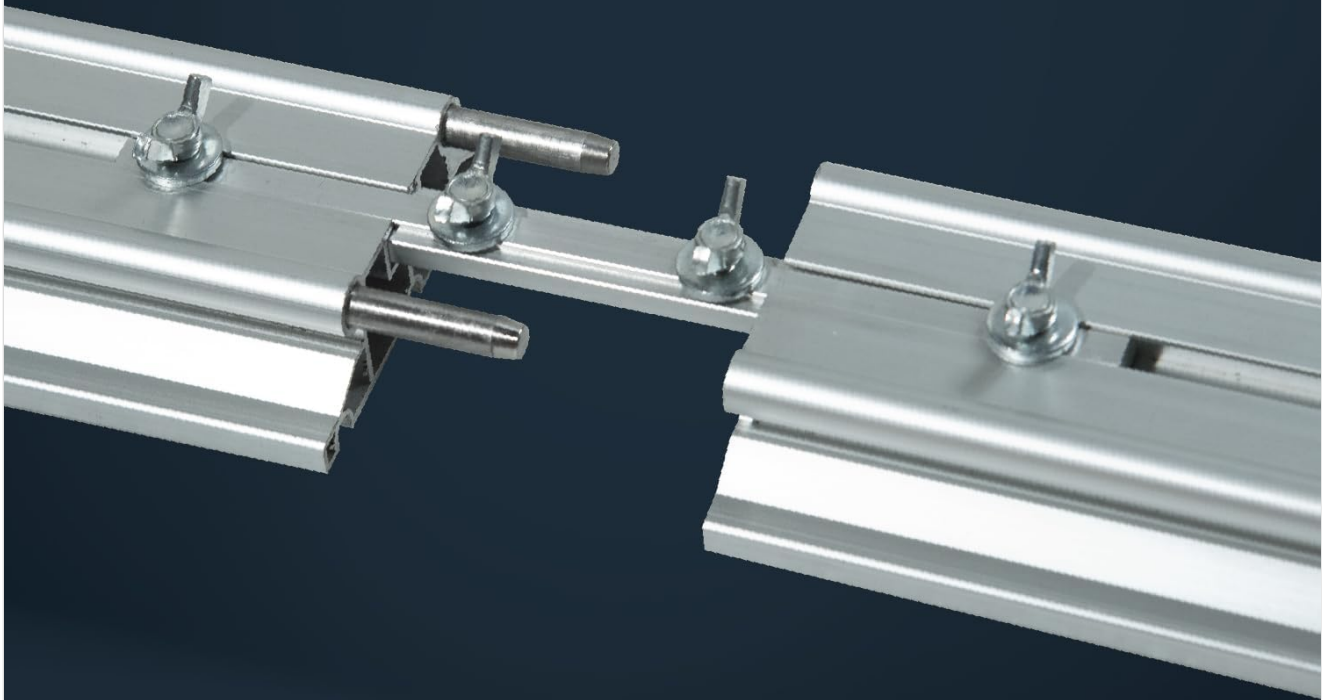
Image: Labeled diagram showing the main components of the tile cutter, including the guide rail, scoring carriage, handles, scoring wheel, positioning fixture, guide rail clamp, and tile breaker.

SETUP INSTRUCTIONS

Follow these steps to assemble your POWERTEC PRO Large Format Tile Cutter:

1. **Assemble the Guide Rails:** Connect the two 59" base guide rails and the 31.5" base guide rail using the provided connectors to achieve the desired length, up to 140 inches. Ensure the connections are secure and the rails are aligned.

POWERTEC®



3 Connecting Rails Total Up To 140" Total Length

Image: Close-up view of the guide rail sections being connected to form a longer track.

2. **Attach the Scoring Carriage:** Slide the scoring carriage onto the assembled guide rail. Ensure the seven wear-resistant rollers are properly seated in the rail grooves for smooth movement.
3. **Position the Tile:** Place the tile or slab on a stable, flat surface. Position the guide rail on top of the tile, aligning the desired cut line with the scoring wheel's path.
4. **Secure the Guide Rail:** Use the guide rail clamps to firmly secure the guide rail to the tile or work surface. This prevents movement during the scoring process.
5. **Use Positioning Fixtures (Optional):** For repetitive cuts or added stability, attach the positioning fixtures to the guide rail and against the edge of the tile.

OPERATING INSTRUCTIONS

This section details the process of scoring and breaking tiles using the POWERTEC PRO Large Format Tile Cutter.

Scoring the Tile

1. **Prepare the Tile:** Ensure the tile surface is clean and free of debris. Mark your desired cut line clearly.

2. **Align the Scoring Wheel:** Position the scoring carriage at the starting edge of the tile. Align the scoring wheel precisely with your marked cut line. The anti-slip bottom strips on the guide rail provide stability.



Image: Close-up of the anti-slip bottom strips on the guide rail, designed to provide stability during scoring.

3. **Apply Pressure and Score:** Grasp the carriage handle and grip knob firmly. Apply consistent, moderate downward pressure on the scoring carriage. Push the carriage smoothly and steadily along the guide rail in a single, continuous motion from one end of the tile to the other. Avoid stopping or re-scoring the same line.

POWERTEC®



Match Scoring Line with Indicator

Image: Demonstrates aligning the scoring line with the indicator on the scoring carriage for precise cuts.

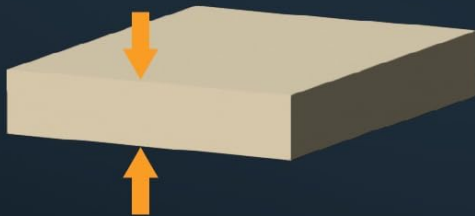
4. **Check the Score Line:** A successful score will be a clean, continuous line across the tile surface.

Breaking the Tile

1. **Position the Tile Breaker:** After scoring, remove the guide rail. Place the tile on a flat, stable surface, ensuring the scored line is directly over a slight elevation or a breaking bar (if available).
2. **Apply Pressure with Tile Breaker:** Use the included tile breaker plier. Position the jaws of the plier directly over the scored line. Apply firm, even pressure until the tile cleanly separates along the score line.
3. **Clean Edges:** Carefully handle the broken tile pieces. The edges may be sharp.

POWERTEC®

Max Cutting for Slabs Up To 70"x140"



Max Cutting Thickness Up To 12mm

Image: The POWERTEC PRO Large Format Tile Cutter in action, demonstrating its capability to cut large slabs up to 70" x 140" with a maximum cutting thickness of 12mm.

MAINTENANCE

Proper maintenance will extend the life of your POWERTEC PRO Tile Cutter.

- **Cleaning:** After each use, wipe down the guide rails and scoring carriage with a clean, dry cloth to remove tile dust and debris.
- **Scoring Wheel Inspection:** Regularly inspect the titanium-coated tungsten carbide scoring wheel for wear or damage. Replace the wheel if it becomes dull or chipped to ensure clean cuts.
- **Lubrication:** Occasionally apply a light lubricant to the guide rail and scoring carriage rollers to ensure smooth operation.
- **Storage:** Store the tile cutter in its carrying bag in a dry, clean environment to protect it from dust and moisture.

TROUBLESHOOTING

This section addresses common issues you might encounter and their potential solutions.

Problem	Possible Cause	Solution
Tile not scoring cleanly or breaking unevenly.	Dull or damaged scoring wheel; Insufficient or inconsistent pressure; Guide rail not secured; Tile not clean.	Replace scoring wheel; Apply consistent, firm pressure; Ensure guide rail is clamped securely; Clean tile surface before scoring.
Scoring carriage not gliding smoothly.	Debris on guide rail or rollers; Rollers worn or damaged; Lack of lubrication.	Clean guide rail and rollers; Inspect and replace worn rollers; Apply light lubricant to guide rail.
Difficulty breaking tile after scoring.	Score line not deep enough; Incorrect use of tile breaker; Tile material too thick or hard for manual breaking.	Ensure a single, firm score pass; Position tile breaker correctly over the score line; For very hard or thick tiles, consider alternative cutting methods if manual breaking is not effective.
Guide rail shifts during scoring.	Clamps not tight enough; Anti-slip strips worn.	Tighten guide rail clamps securely; Inspect anti-slip strips and replace if worn.

SPECIFICATIONS

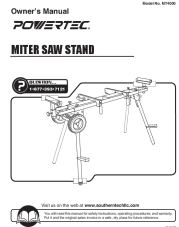


- **Model Number:** 71982
- **Maximum Cutting Length:** Up to 140 inches (355.6 cm)
- **Maximum Cutting Thickness:** 3-12mm
- **Scoring Wheel:** Ø22 mm, 114-degree titanium-coated tungsten carbide
- **Guide Rail System:** 2 x 59" base guide rails, 1 x 31.5" base guide rail (connectable)
- **Rollers:** 7 wear-resistant rollers with ball bearing system
- **Product Dimensions:** Approximately 61.42 x 7.09 x 9.45 inches (assembled for shortest length)
- **Item Weight:** Approximately 55 pounds (24.9 kg)
- **Included Components:** Large Format Tile Cutter (assembly required), Tile Breaker, Carrying Bag

WARRANTY AND SUPPORT

POWERTEC PRO products are manufactured to high-quality standards. For warranty information, technical support, or to purchase replacement parts, please visit the official POWERTEC website or contact their customer service department. Keep your purchase receipt as proof of purchase for any warranty claims.

For customer support, you may refer to the contact information provided with your product packaging or visit the POWERTEC store on Amazon: [POWERTEC Store](#).

Related Documents - 71982

	<p>POWERTEC MT4000 Miter Saw Stand Owner's Manual</p> <p>Comprehensive owner's manual for the POWERTEC MT4000 Miter Saw Stand, covering safety, assembly, operation, maintenance, and warranty information.</p>
	<p>Powertec PT3200i 3000W Digital Inverter Generator Operating Instructions</p> <p>Operating instructions for the Powertec PT3200i 3000W Digital Inverter Generator, covering safety, features, operation, maintenance, and troubleshooting.</p>
	<p>Powertec Workbench Levergym WB-LS14 Assembly Manual - Step-by-Step Guide</p> <p>Comprehensive assembly manual for the Powertec Workbench Levergym WB-LS14. Includes parts list, detailed step-by-step instructions, safety precautions, and maintenance tips.</p>
	<p>POWERTEC PT3300Ei 3300W Digital Inverter Generator Operating Instructions</p> <p>Comprehensive operating instructions for the POWERTEC PT3300Ei 3300W Digital Inverter Generator. Learn about safety rules, assembly, operation, maintenance, troubleshooting, and specifications.</p>
	<p>POWERTEC 6-1/2" Universal Router Plate Instruction Sheet</p> <p>Instruction sheet for the POWERTEC 6-1/2" Universal Router Plate, including assembly, intended use, maintenance, and compatibility with various router models.</p>
	<p>POWERTEC 71850 Router Table Insert Plate - Instructions and Safety</p> <p>Comprehensive instruction sheet for the POWERTEC 71850 Router Table Insert Plate, covering safety precautions, unpacking, parts list, installation, usage, and maintenance. Includes compatibility chart for various router models.</p>



[\[pdf\]](#) User Manual Owner's Manual Instructions Specifications Warranty Accessories
71982 Tile Cutter for Large Format Slab 24 0914 indd powertecproducts content srsItid
AfmBOorSiSUdHZrOM 4gQ3dQIS UPe4F8MhvGqwiNUoRo9dl54yd3NQS |||
Owner s Manual Model No. **71982** Tile Cutter for Large Format Tile Slab Visit us on
the web at www.powertecproducts.com You will need this manual for safety
instructions, operating procedures, and warranty. Put it and the original sales invoice
in a safe, dry place for future reference. 24-0914 ...
lang:en **score:24** filesize: 14.58 M page_count: 8 document date: 2024-09-14



[\[pdf\]](#) User Manual Accessories Catalog
2025TileToolsAccessories TILE TOOLS ACCESSORIES 2025Tile Tools Catalog powertecproducts
content |||
TILE TOOLS ACCESSORIES 2025 PRODUCT CATALOG TABLE OF CONTENTS
WHAT S NEW at POWERTEC We are pro ... ile Vibration Leveling Machine 71985
Carry System for Large Format Tile Gauged Porcelain Panels **71982** Tile Cutter for
Large Format Tile Gauged Porcelain Panels 71879 Knee Pad 71880 Knee Pad 1...
lang:en **score:16** filesize: 6.6 M page_count: 16 document date: 2025-04-17



[\[pdf\]](#) User Manual Accessories Catalog
Tile Tools Catalog powertecproducts content |||
TILE TOOLS ACCESSORIES 2024 PRODUCT CATALOG WHAT S NEW at
POWERTEC We are proud to announce the ... 71983 Pro Transport Cart for Large
Format Tile Gauged Porcelain Panels 71882 Dual Suction Cup **71982** 71985 Tile
Cutter for Large Format Tile Carry System for Large Format Gauged Porcelain Pa...
lang:en **score:16** filesize: 13.15 M page_count: 9 document date: 2024-04-17