

Manuals+

[Q & A](#) | [Deep Search](#) | [Upload](#)

[manuals.plus](#) /

> [Niderson](#) /

> [Niderson J51 AI Translation Earbuds User Manual](#)

Niderson J51

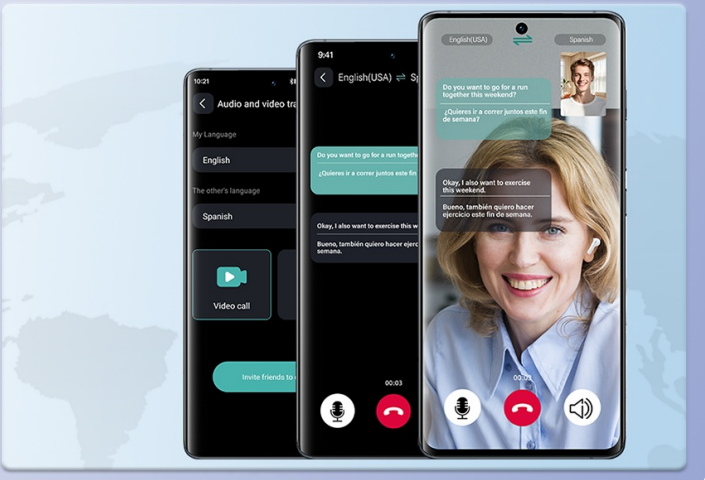
Niderson J51 AI Translation Earbuds User Manual


Model: J51

1. INTRODUCTION

The Niderson J51 AI Translation Earbuds are designed to facilitate real-time language translation, high-definition calls, and immersive music playback. Featuring Bluetooth 5.3 technology, these earbuds ensure stable connections and support 164 languages across various translation modes. This manual provides detailed instructions for optimal use and maintenance of your device.

2. WHAT'S IN THE BOX




Audio and Video Translation Mode
(Supports 164 languages)

Translates audio/video content by connecting via Bluetooth or audio cable. Automatically recognizes and translates soundtrack dialogue, displaying subtitles or playing translated audio.

The Niderson J51 package includes the following components:

- J51 Translator Earbuds (Left & Right)
- USB-C Charging Cable
- Instructions for Use Manual
- Translation Manual
- Ear Tips (3 sizes: S/M/L)

3. PRODUCT OVERVIEW



The Niderson J51 earbuds are designed for comfort and functionality. Each earbud features touch controls and integrated microphones for clear communication and translation. The compact charging case provides additional battery life and protects the earbuds when not in use. A small LED indicator on the case shows charging status.

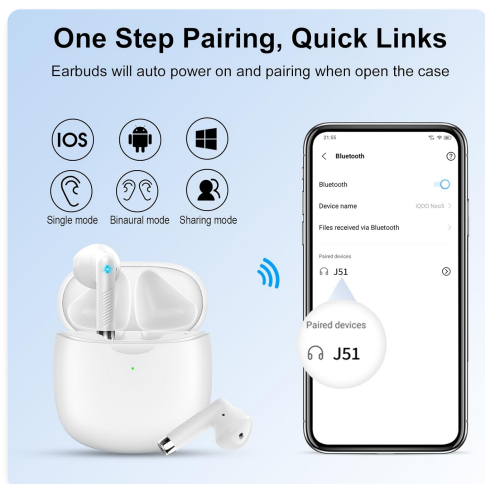
4. SETUP

4.1 Charging the Earbuds and Case



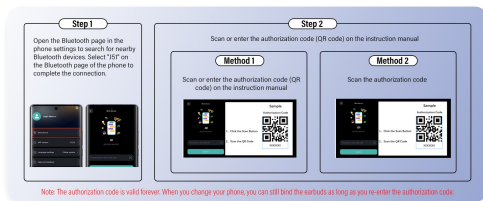
Before first use, fully charge the earbuds and charging case. Place the earbuds into the charging case. Connect the USB-C charging cable to the case and a power source. The LED indicator on the case will show charging status. A full charge takes approximately 1.5 hours. The earbuds provide 6-8 hours of use on a single charge, with the charging case extending total playtime to 32 hours.

4.2 Bluetooth Pairing



1. Open the charging case. The earbuds will automatically power on and enter pairing mode.
2. On your smartphone or Bluetooth-enabled device, navigate to the Bluetooth settings.
3. Search for nearby devices and select 'J51' from the list to complete the connection.
4. Once paired, the earbuds will automatically connect to your device when removed from the case.

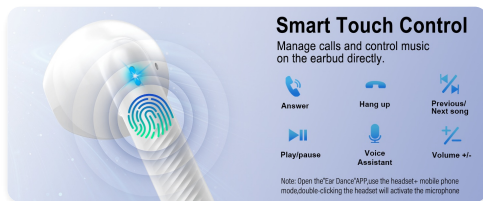
4.3 EarDance App Installation and Connection



The 'EarDance' app is required to access the full translation features. It is compatible with both iOS and Android devices.

1. Scan the QR code provided in the instruction manual or visit earjoy.watchfun.cn/app-download-h5?appCode=eardance to download the 'EarDance' app. Alternatively, search for 'EarDance' in your device's app store.
2. After installing, launch the 'EarDance' app. Ensure your earbuds are paired via Bluetooth as described in section 4.2. The app should automatically detect and connect to the earbuds.

4.4 App Authorization



To unlock all features, you may need to authorize the app:

1. Within the 'EarDance' app, navigate to the authorization section.
2. Scan the QR code or enter the authorization code (e.g., **12345678**) found in your instruction manual.
3. The authorization code is valid permanently. If you change phones, you can re-bind the earbuds by re-entering the authorization code.

5. OPERATING INSTRUCTIONS

5.1 Smart Touch Controls

The earbuds feature intuitive touch controls for managing various functions:

- **Answer/End Call:** Single tap on either earbud.
- **Hang Up:** Long press on either earbud during a call.
- **Play/Pause Music:** Single tap on either earbud.
- **Previous/Next Track:** Double tap left earbud for previous, double tap right earbud for next.
- **Volume +/-:** Triple tap left earbud for volume down, triple tap right earbud for volume up.
- **Voice Assistant:** Long press on either earbud (when not on a call).

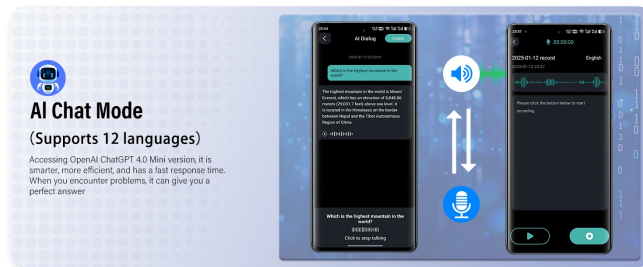
Note: For Headset+Phone mode in the EarDance app, double-clicking the headset activates the microphone.

5.2 Translation Modes (6 Powerful Modes)

The Niderson J51 earbuds offer six distinct translation modes to suit various communication needs, all accessible

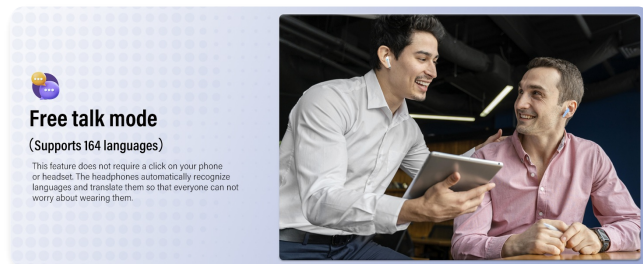
via the 'EarDance' app.

5.2.1 Free Talk Mode



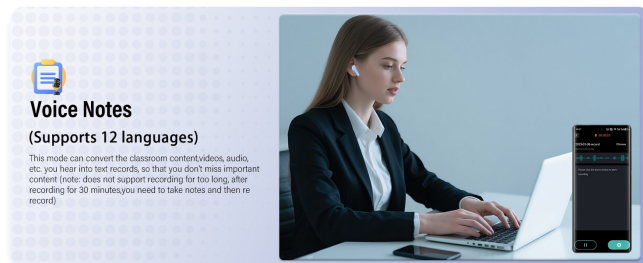
In Free Talk mode, the earbuds automatically detect and translate speech in real-time. This mode allows for natural, continuous conversation without manual input, as the system handles language recognition and translation seamlessly for all participants.

5.2.2 Headset + Phone Mode



This mode is designed for two-way interaction. One user wears an earbud, while the other speaks into the paired smartphone. Tapping the earbud or the translation button on the phone initiates speech recognition and translation, enabling quick and direct communication.

5.2.3 Translation Machine Mode



Operating like a traditional handheld translator, this mode uses the smartphone's speaker to play translated audio. Simply click the language button in the app, speak, and the phone will output the translation. This mode is ideal for situations where you need to address a group or prefer not to share an earbud.

5.2.4 Audio & Video Call Translation Mode



This mode enables real-time translation during audio and video calls. By connecting via Bluetooth, the earbuds automatically recognize and translate spoken dialogue, displaying subtitles on your screen or playing translated audio directly into your ear. This facilitates seamless cross-lingual communication during virtual meetings or personal calls.

5.2.5 Voice Notes Mode



The Voice Notes mode converts spoken content from classrooms, videos, or audio into text records. This feature helps capture important information without missing details. *Note: This mode does not support continuous recording for extended periods; for recordings longer than 30 minutes, it is recommended to take notes and then re-record.*

5.2.6 AI Chat Mode



Accessing an OpenAI ChatGPT 4.0 Mini version, the AI Chat Mode provides smart, efficient, and fast responses to your queries. This feature acts as a personal assistant, offering quick answers to complex questions.

6. MAINTENANCE

6.1 Cleaning

Regular cleaning helps maintain the performance and longevity of your earbuds. Use a soft, dry, lint-free cloth to wipe the earbuds and charging case. For stubborn dirt, slightly dampen the cloth with water. Avoid using abrasive materials, solvents, or harsh chemicals. Ensure the charging ports are free of dust and debris.

6.2 Water Resistance



The Niderson J51 earbuds are IPX7 waterproof, meaning they can withstand immersion in water up to 1 meter for 30 minutes. This makes them suitable for use during workouts or in rainy conditions. However, the charging case is not waterproof. Always ensure the earbuds are dry before placing them back into the charging case to prevent damage.

6.3 Storage

When not in use, store the earbuds in their charging case to protect them from dust, scratches, and accidental damage. Store the case in a cool, dry place away from direct sunlight and extreme temperatures.

7. TROUBLESHOOTING

7.1 Earbuds Not Pairing

- Ensure both earbuds are charged.
- Turn off and on your device's Bluetooth.
- Place earbuds back in the case, close it, then open it again to re-enter pairing mode.
- Forget 'J51' from your device's Bluetooth list and try pairing again.

7.2 No Sound or Low Volume

- Check the volume levels on both your device and the earbuds.
- Ensure earbuds are properly seated in your ears.
- Clean any debris from the earbud speakers.
- Reconnect the earbuds to your device.

7.3 App Connection Issues

- Verify that Bluetooth is enabled and the earbuds are connected to your phone.
- Ensure the 'EarDance' app is updated to the latest version.
- Restart the 'EarDance' app.
- Check if the app requires re-authorization (refer to section 4.4).

7.4 Translation Inaccuracy

- Ensure a stable internet connection for online translation modes.
- Speak clearly and at a moderate pace.
- Minimize background noise.
- Verify that the correct source and target languages are selected in the app.

8. SPECIFICATIONS

Model Name	J51
Brand	Niderson
Connectivity Technology	Wireless (Bluetooth 5.3)
Battery Life	Up to 32 Hours (with charging case)
Earbud Playtime	6-8 Hours (single charge)
Charging Time	1.5 Hours
Water Resistance Level	IPX7 Waterproof (earbuds only)
Compatible Devices	iOS, Android, and all Bluetooth-enabled devices
Number of Supported Languages	164

Item Weight	3.84 ounces
Package Dimensions	4.29 x 3.27 x 1.42 inches

9. WARRANTY AND SUPPORT

Niderson products are manufactured with high-quality standards. For warranty information, technical support, or customer service inquiries, please refer to the contact details provided on the product packaging or the official Niderson website. Keep your purchase receipt for warranty claims.