

MASDERM APARATO FACIAL Y CUELLO 7 EN 1

MASDERM 7-in-1 Electric Facial Massager User Manual

Model: APARATO FACIAL Y CUELLO 7 EN 1

1. SAFETY INFORMATION

Please read all instructions carefully before using the MASDERM 7-in-1 Electric Facial Massager. Retain this manual for future reference.

- Do not use on broken, irritated, or infected skin.
- Consult a physician before use if you have any skin conditions, allergies, or are pregnant.
- Keep the device away from water and do not immerse it in liquids.
- Do not use the device while charging.
- Keep out of reach of children.
- Discontinue use if you experience any discomfort or adverse reactions.
- Use only the provided charging cable and adapter.

2. PRODUCT OVERVIEW

The MASDERM 7-in-1 Electric Facial Massager is designed to provide a comprehensive facial treatment experience at home. It combines seven advanced functions to promote skin health and appearance.



Image 1: The MASDERM 7-in-1 Electric Facial Massager device, showcasing its ergonomic design and control panel.

Key Features and Functions:

1. **Radiofrequency (RF):** Stimulates collagen and elastin production, reducing skin laxity and smoothing wrinkles.
2. **Electrical Muscle Stimulation (EMS):** Tones facial muscles, improving facial contours and firmness.
3. **Vibration:** Enhances blood circulation and product absorption.
4. **Ionotherapy (IMPORT/CLEAN):** Facilitates deeper penetration of skincare products (IMPORT) and aids in deep cleansing by attracting impurities (CLEAN).
5. **Cool Therapy (COOL):** Calms and decongests the skin, helps to close pores, and reduces inflammation.
6. **Deep Cleansing (CLEAN):** Works with ionotherapy to remove dirt and impurities from the skin.
7. **Red LED Light Therapy:** Supports skin rejuvenation and anti-aging effects.

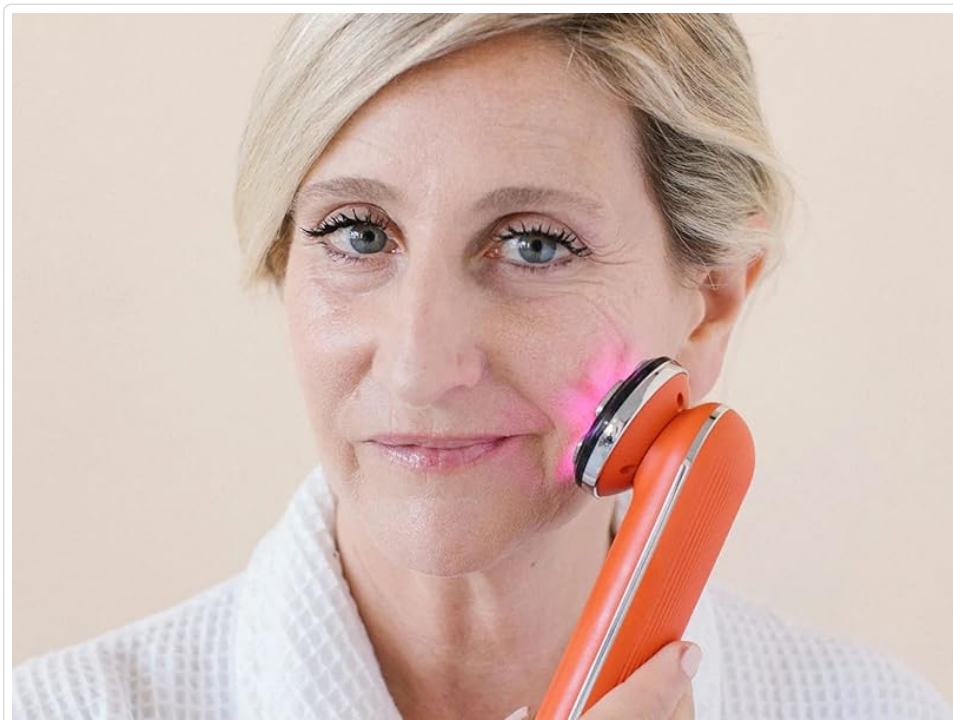


Image 2: Visual representation of the seven distinct functions of the MASDERM facial device, including RF, Import, Eye, Clean, EMS, Jaw, and Cool modes.

3. SETUP

Charging the Device:

1. Connect the provided USB charging cable to the device's charging port.
2. Plug the other end of the USB cable into a suitable USB power adapter (not included) or a computer USB port.
3. The indicator light will show the charging status. Ensure the device is fully charged before first use.

4. OPERATING INSTRUCTIONS

Preparation:

1. Ensure your face and neck are thoroughly cleansed and dry before starting any treatment.
2. Apply an appropriate amount of your preferred cream or serum to the treatment area. This is crucial for optimal conductivity and glide, especially for RF and EMS modes.

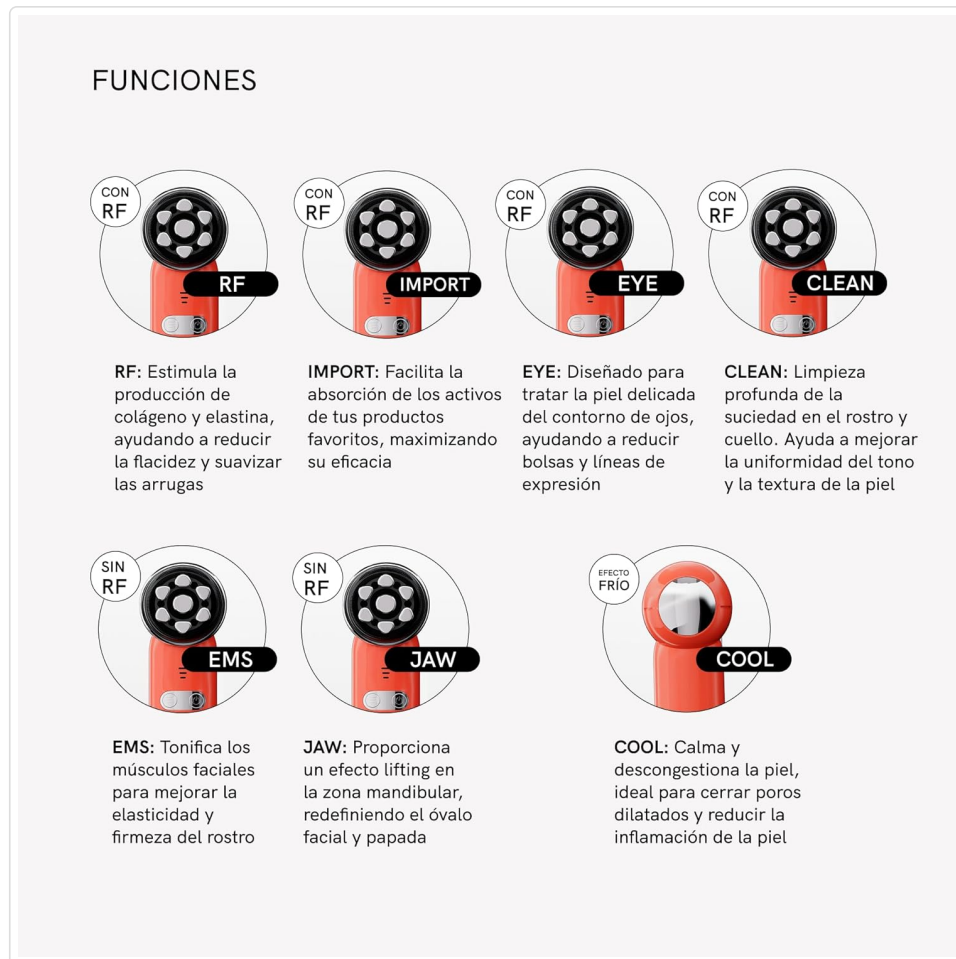


Image 3: A user applying a facial cream before using the MASDERM device, demonstrating the proper preparation step.

Usage Frequency and Duration:

- It is recommended to use the device 2 to 3 times per week, on alternate days, preferably at night.
- The Cool function can be used daily.
- Each treatment session should not exceed a maximum of 20 minutes.

Operating the Device:

1. Press and hold the power button to turn on the device.

2. Select the desired function by pressing the mode button. The indicator lights will show the active mode.
3. Gently glide the device over your skin, following the contours of your face and neck. Avoid staying in one spot for too long, especially with RF mode.
4. For specific areas like the eye contour or jawline, use the dedicated modes (EYE, JAW) as instructed.
5. After completing your treatment, press and hold the power button to turn off the device.

5. MAINTENANCE

Cleaning:

- After each use, wipe the device head with a soft, damp cloth.
- Do not use abrasive cleaners, alcohol, or harsh chemicals.
- Ensure the device is completely dry before storing.

Storage:

- Store the device in a cool, dry place, away from direct sunlight and extreme temperatures.
- Keep it in its original packaging or a protective pouch to prevent damage.

6. TROUBLESHOOTING

Problem	Possible Cause	Solution
Device does not turn on	Low battery; Device not charged	Charge the device fully. Ensure the power button is pressed and held for a few seconds.
No sensation or weak effect during use	Insufficient contact with skin; No conductive gel/cream applied; Low intensity setting	Ensure full contact with the skin. Apply a generous amount of conductive cream or serum. Increase the intensity setting if available.
Battery drains quickly	Aging battery; Frequent use of high-power modes	Ensure the device is fully charged before each use. If the issue persists, contact customer support.
Skin redness or irritation	Overuse; Sensitive skin; Allergic reaction to product	Reduce frequency/duration of use. Ensure proper glide and avoid prolonged contact in one area. Discontinue use if irritation persists and consult a dermatologist.

7. SPECIFICATIONS

- **Brand:** MASDERM
- **Model Name:** Aparato Radiofrecuencia Facial 7 en 1
- **Model Number:** APARATO FACIAL Y CUELLO 7 EN 1
- **ASIN:** B0FDQL5ZZL
- **Units:** 1.0 Total
- **Package Dimensions:** 20 x 11 x 6 cm
- **Weight:** 600 grams

- **Manufacturer:** KERVLAN LAB S.L
- **Country of Origin:** China
- **Included Components:** Power Adapter (Note: Input states 'Adaptateur d'alimentation', but typically this refers to the cable, as adapters are often separate or USB-based. Assuming standard USB charging cable.)

8. WARRANTY AND SUPPORT

The MASDERM 7-in-1 Electric Facial Massager comes with a standard manufacturer's warranty. Please refer to the warranty card included in your product packaging for specific terms and conditions.

For technical support, troubleshooting assistance, or warranty claims, please contact MASDERM customer service through the retailer where the product was purchased or visit the official MASDERM website for contact information.