

## APPECK USC5113-CB

# APPECK Permanent RGBW Outdoor Lights (Model USC5113-CB) Instruction Manual

Brand: APPECK | Model: USC5113-CB

## 1. PRODUCT OVERVIEW

The APPECK Permanent RGBW Outdoor Lights (Model USC5113-CB) are designed to provide versatile and durable outdoor lighting. These lights feature RGBW color capabilities, offering 16 million colors and over 111 scene modes for various decorative purposes. They are waterproof (IP65 rated) and built to withstand diverse weather conditions, operating effectively from -4°F to 140°F (-20°C to 60°C) with a lifespan of up to 50,000 hours. Control options include the Smart Life app, a remote control, a control box, and voice commands via Amazon Alexa or Google Assistant (2.4 GHz Wi-Fi required).

Key features include:

- Customizable RGBW lighting with 16 million colors and 111+ scene modes.
- Music sync function for dynamic lighting effects.
- IP65 waterproof rating and durable construction for outdoor use.
- Multiple control options: Smart Life app, remote, control box, and voice control (Alexa/Google Assistant).
- Easy installation with self-adhesive backing and screw-in fixing.
- Scheduling and timing functions via the Smart Life app.



Image: APPECK Permanent RGBW Outdoor Lights, showing the lights, remote, and app interface.

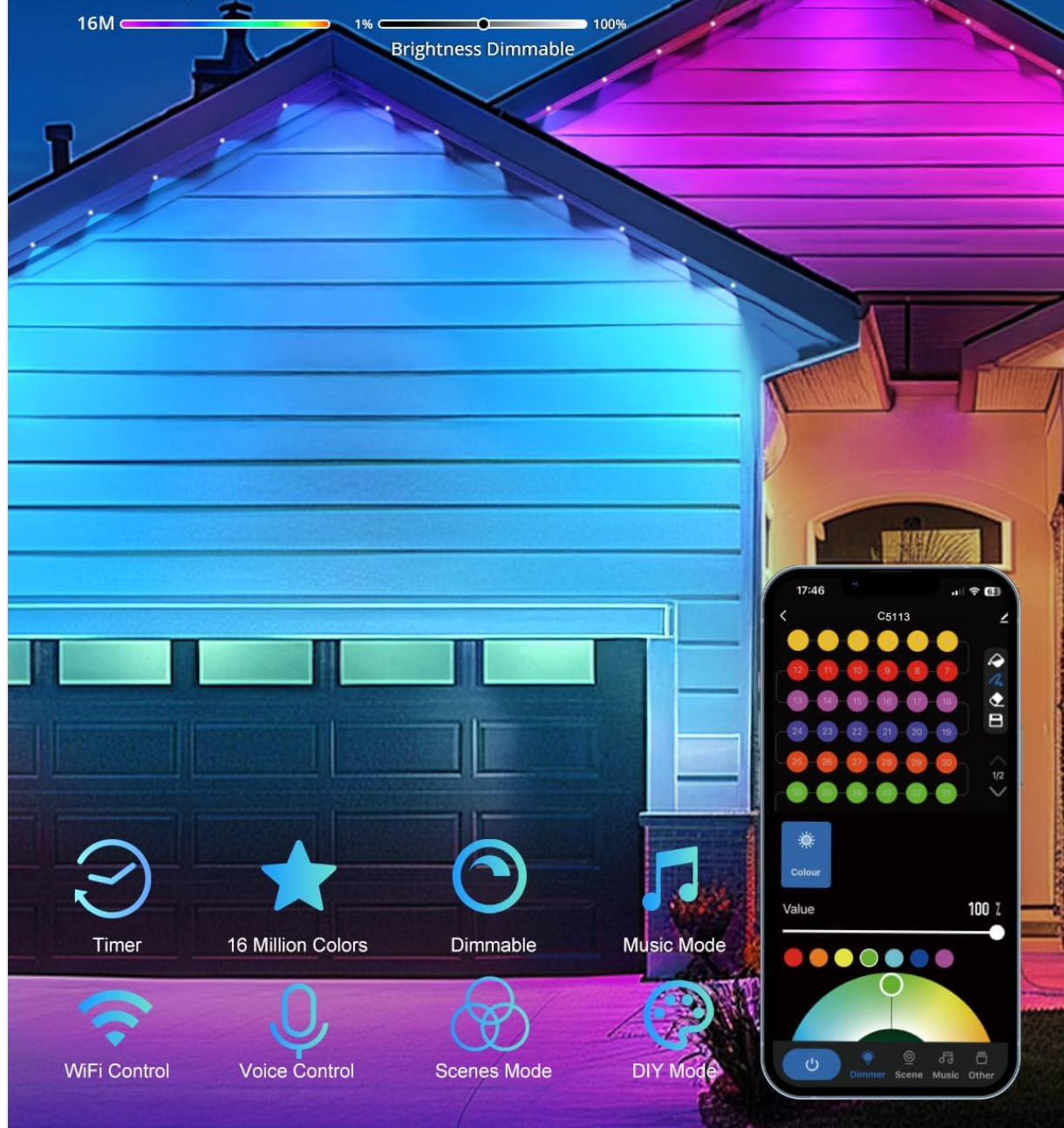
## 2. WHAT'S IN THE BOX

The package for the 150ft APPECK Permanent RGBW Outdoor Lights includes the following components:

- String Lights x 9 (totaling 150ft with 108 LED lights)
- Control Box x 1
- Power Adapter x 1
- Remote Control x 1 (AAA batteries not included)
- User Manual x 1
- Extension Cords x 2
- Screw Mounting Kit

# Customized the Lighting Effects

Each outdoor lights can be controlled separately via APP, including color changing, on/off status, and brightness.



*Image: Contents of the product package, including light strands, control box, power adapter, and remote.*

## 3. SETUP AND INSTALLATION

Follow these steps for proper installation of your APPECK Permanent RGBW Outdoor Lights:

1. **Prepare the Surface:** Ensure the installation surface (e.g., eaves, walls) is clean and dry. Wipe it with a cloth to remove any dust or debris.
2. **Apply Lights:** Each light fixture has a self-adhesive backing. Peel off the protective film from the 3M tape and firmly press the light onto the desired surface.
3. **Secure with Screws:** For enhanced durability and permanent installation, use the provided screws to



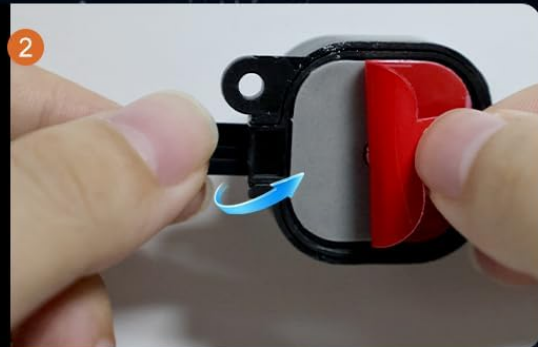
further secure each light fixture. This is especially recommended for outdoor use to withstand weather conditions.

4. **Connect Components:** Connect the light strands to the control box and then to the power adapter. Use the extension cables if additional length is required between light sections or to reach the power source.
5. **Power On:** Plug the power adapter into a suitable outdoor power outlet.

## Installation and Measurement



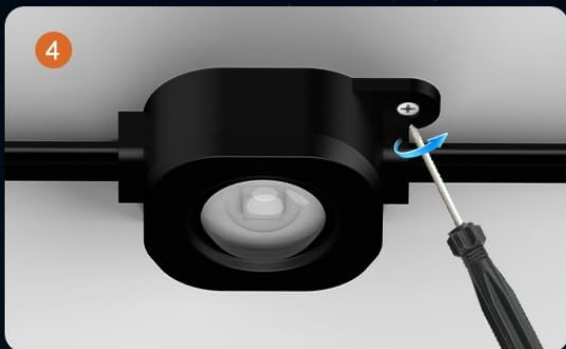
1. Clean the surface with the cloth before hanging.



2. Peel off the 3M tape.



3. Stick the light on the wall.



4. Screws to secure.

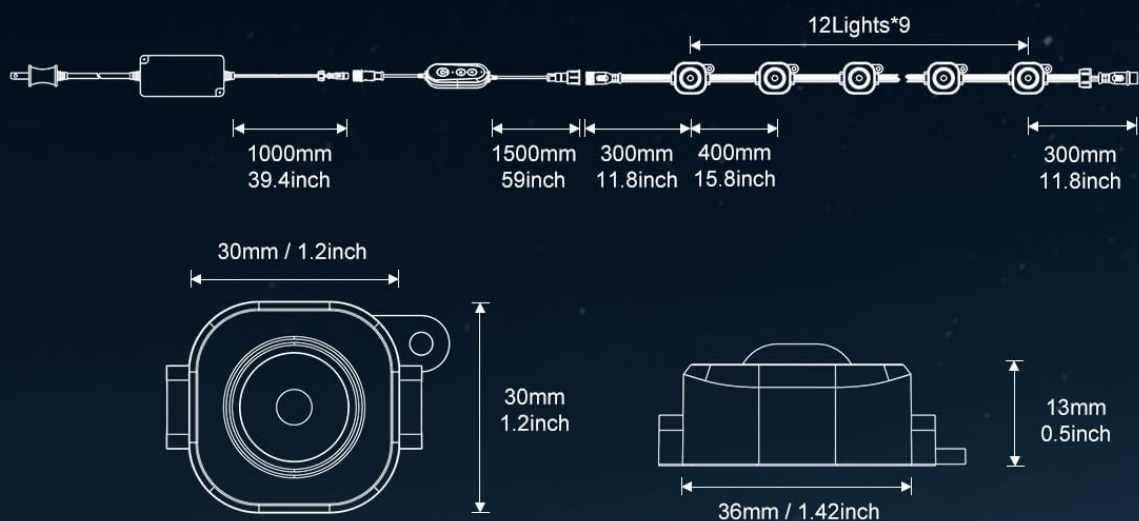


Image: Visual guide for installing the lights, including surface preparation, adhesive application, and screw fastening.

### Important Notes:

- Ensure the lights are powered off during installation.

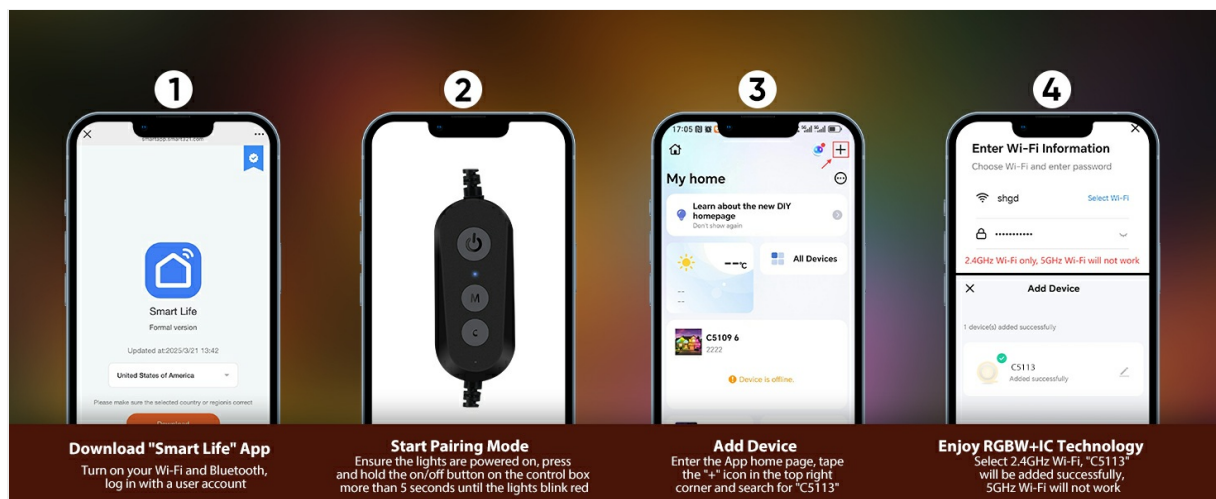
- The lights are designed for both indoor and outdoor use.
- Maintain proper spacing between lights for optimal effect. The spacing between individual lights is approximately 15 inches, while the spacing between the last light of one section and the first light of the next section is about 20 inches. Adjust cabling to maintain uniformity if desired.

## 4. OPERATING INSTRUCTIONS

### 4.1. Smart Life App Control

The Smart Life app provides comprehensive control over your lights. Ensure your mobile device is connected to a 2.4 GHz Wi-Fi network (5 GHz Wi-Fi is not supported).

1. **Download App:** Download the "Smart Life" app from your device's app store.
2. **Register/Log In:** Create an account or log in to your existing Smart Life account.
3. **Pairing Mode:** Ensure the lights are powered on. Press and hold the on/off button on the control box for more than 5 seconds until the lights blink red, indicating pairing mode.
4. **Add Device:** In the app, tap the "+" icon in the top right corner and search for "C5113". Follow the on-screen prompts to connect the lights to your 2.4 GHz Wi-Fi network.



*Image: Step-by-step guide for connecting the lights to the Smart Life app.*

### 4.2. App Features

- **Color Changing:** Change the color of each individual light or all lights simultaneously. Access 16 million RGBW colors.
- **Brightness Adjustment:** Adjust the brightness from 1% to 100%.
- **Scene Customization:** Choose from 111+ pre-set dynamic scene modes (e.g., holiday themes, mood lighting) or create and save your own custom scenes.
- **Music Sync:** Activate the music rhythm function to synchronize light changes with ambient sound or music played through the app.
- **Scheduling & Timing:** Set timers for automatic on/off, looping, and length settings.
- **Group Control:** Control multiple light sets simultaneously if grouped within the app.

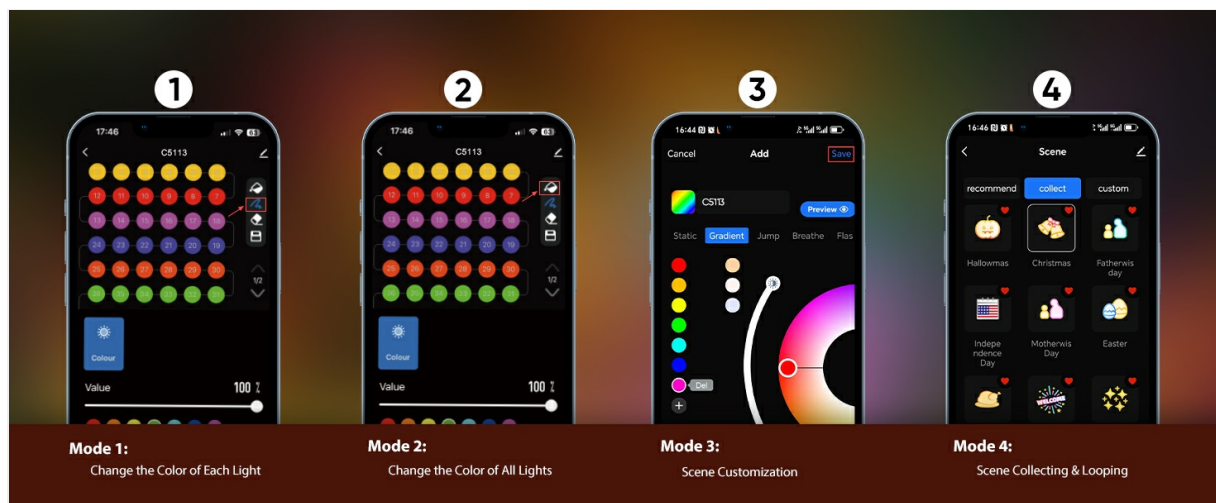


Image: Overview of various control modes and customization options available in the Smart Life app.

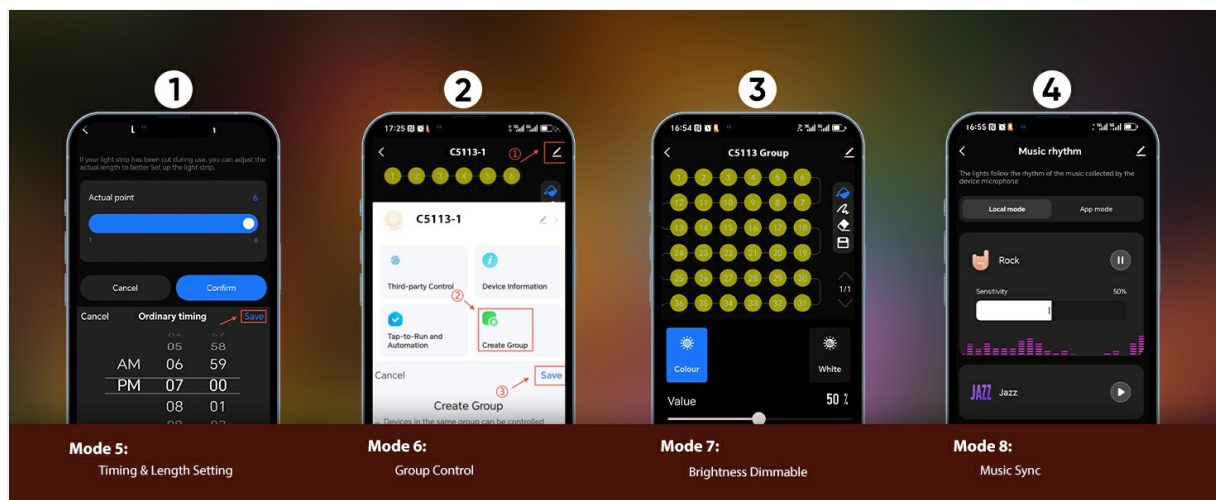


Image: Advanced app functions including timing, grouping, brightness control, and music synchronization.

### 4.3. Remote Control

Use the included remote control for basic functions such as turning lights on/off, changing colors (Red, Green, Blue, Cool White, Warm White), adjusting brightness, and cycling through modes (DIM+, DIM-, MODE+, MODE-, AUTO).

# Better Brightness and Lighting Effects

**Ours**



**VS**

**Others**



*Image: The remote control unit for direct light operation.*

## 4.4. Control Box

The physical control box on the light string allows for basic on/off functionality and initiating pairing mode for app connection.

## 4.5. Voice Control

Integrate your lights with Amazon Alexa or Google Assistant for convenient hands-free voice commands. Ensure your Smart Life account is linked to your voice assistant app.



# Multiple Control Options

Change color, adjust brightness and turn on/off Lights through different methods

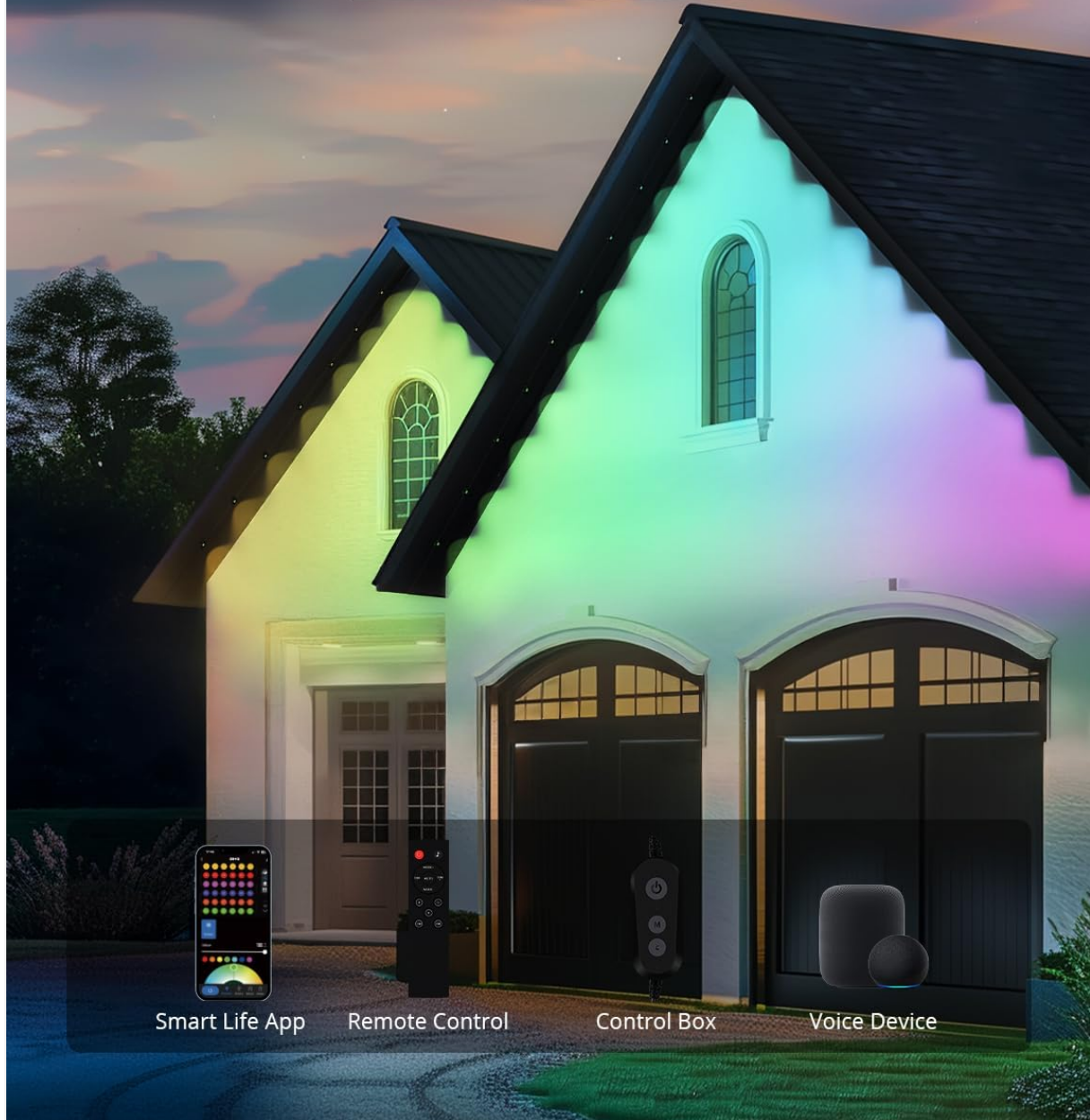
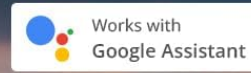


Image: Illustration of various control methods: Smart Life App, Remote Control, Control Box, and Voice Device integration.

## 4.6. Product Videos

The following videos demonstrate the product's features and capabilities:

Video: Smart RGBW Permanent Outdoor Lights for Holidays. This video showcases various holiday lighting effects and the smart features of the lights.

Video: APPECK Permanent Outdoor Lights for Decoration. This video demonstrates the lights in various decorative settings and highlights their versatility.



## 5. MAINTENANCE

To ensure the longevity and optimal performance of your APPECK Permanent RGBW Outdoor Lights, follow these maintenance guidelines:

- **Regular Cleaning:** Periodically clean the light fixtures with a soft, damp cloth to remove dirt, dust, and debris. Avoid using harsh chemicals or abrasive materials that could damage the lights or their waterproof seals.
  - **Inspect Connections:** Annually inspect all electrical connections, including the power adapter and any extension cords, for signs of wear, corrosion, or damage. Ensure all connections are secure.
  - **Check Mounting:** Verify that all lights are securely mounted. Re-tighten screws or re-apply adhesive if any fixtures appear loose.
  - **Winter Care:** While the lights are designed for extreme temperatures (-4°F to 140°F), ensure snow and ice do not accumulate excessively on the fixtures, which could put undue stress on the mounting points.
- 

## 6. TROUBLESHOOTING

If you encounter issues with your APPECK Permanent RGBW Outdoor Lights, refer to the following troubleshooting tips:

- **Lights Not Turning On:**
    - Check if the power adapter is securely plugged into a working outlet.
    - Ensure all connections between light strands and the control box are firm.
    - Verify the lights are not set to a very low brightness level in the app or via remote.
  - **App Connectivity Issues:**
    - Confirm your Wi-Fi network is 2.4 GHz. The lights are not compatible with 5 GHz networks.
    - Ensure your phone is connected to the 2.4 GHz Wi-Fi network during pairing.
    - Restart your Wi-Fi router and try the pairing process again.
    - Make sure the lights are in pairing mode (blinking red) before attempting to add them in the app.
    - Ensure your phone's Bluetooth is enabled for initial setup.
  - **Remote Control Not Working:**
    - Check if the remote control batteries need replacement (AAA batteries not included).
    - Ensure there are no obstructions between the remote and the control box.
  - **Inconsistent Light Colors/Brightness:**
    - Check individual light connections for any loose points.
    - Reset the lights by unplugging and replugging the power adapter.
    - Ensure the app settings are applied correctly to all lights or groups.
-

## 7. SPECIFICATIONS





| Feature               | Detail  |
|-----------------------|---|
| Brand                 | APPECK  |
| Model Number          | USC5113-CB  |
| Color                 | Black   |
| Length                | 150ft   |
| Number of LED Lights  | 108   |
| Light Source Type     | LED   |
| Light Color           | Multicolor (RGBW, 16 Million Colors)  |
| Special Features      | Color Changing, Remote Controlled, Waterproof, Music Sync, App Control, Voice Control |
| Indoor/Outdoor Usage  | Indoor, Outdoor   |
| Waterproof Rating     | IP65  |
| Operating Temperature | -4°F to 140°F (-20°C to 60°C)   |
| Lifespan              | Up to 50,000 hours  |
| Power Source          | AC/DC   |
| Voltage               | 36 Volts  |
| Wattage               | 96 watts  |
| Control Method        | App, Remote, Voice  |
| Wi-Fi Compatibility   | 2.4 GHz only  |

## 8. WARRANTY AND SUPPORT

For warranty information and customer support, please refer to the documentation included in your product package or visit the official APPECK website. Keep your purchase receipt for warranty claims.

### Contact Information:

- Manufacturer: Shenzhen Jindian Zhiguang Lighting Co.,LTD
- Brand Store: [APPECK Amazon Store](#)

|  |  |
|--|--|
|  <p>Model C5103-A</p> <p>Download Free APP</p> <p>Thank you for choosing the C5103-A. In order to optimize the user experience, please read this manual carefully before operation, and keep this manual properly for future use.</p> | <p><a href="#">C5103-A Permanent Outdoor Lights User Manual</a></p> <p>User manual for the C5103-A permanent outdoor lights, covering installation, app control, troubleshooting, and technical specifications. Includes warnings and FCC compliance information.</p>  |
|  | <p><a href="#">APPECK RGBCW Permanent Outdoor Lights Pro User Manual - Model C5106-A</a></p> <p>Comprehensive user manual for APPECK RGBCW Permanent Outdoor Lights Pro (Model C5106-A). Learn about safety instructions, package contents, product specifications, app connection, troubleshooting, FAQs, and more.</p>   |
|  <p>Model C5103-A</p> <p>Download Free APP</p> <p>Thank you for choosing the C5103-A. In order to optimize the user experience, please read this manual carefully before operation, and keep this manual properly for future use.</p> | <p><a href="#">C5103-A Permanent Outdoor Lights User Manual</a></p> <p>User manual for the C5103-A permanent outdoor lights, covering installation, app control, troubleshooting, and technical specifications. Includes warnings and FCC compliance information.</p>  |
|   | <p><a href="#">SaunaFin RGBW Puck Lights for Saunalogic² Installation Guide</a></p> <p>Installation instructions and guide for Saunafin's RGBW Puck Lights compatible with the Saunalogic² control system. Includes kit contents, layout design, electrical installation, troubleshooting, and warranty information from TyloHelo Inc.</p>   |
|  | <p><a href="#">APPECK RGBCW Permanent Outdoor Lights Pro User Manual - Model C5106-A</a></p> <p>Comprehensive user manual for APPECK RGBCW Permanent Outdoor Lights Pro (Model C5106-A). Learn about safety instructions, package contents, product specifications, app connection, troubleshooting, FAQs, and more.</p>   |
|  <p>CB-01, CB-02, CB-03, CB-04, CB-05;<br/>CB-01P, CB-02P, CB-03P, CB-04P, CB-05P</p> <p>РУКОВОДСТВО ПО ЭКСПЛУАТАЦИИ (PASSPORT)</p>   | <p><a href="#">Руководство по эксплуатации электрического звонка 230В Тритон</a></p> <p>Полное руководство по эксплуатации и паспорт для электрических бытовых проводных звонков Тритон моделей CB-01, CB-02, CB-03, CB-04, CB-05 и их версий с регулятором громкости. Включает технические характеристики, инструкции по установке, эксплуатации, безопасности, гарантийные условия и таблицу соответствия.</p> |