



XHF0001

Generic A10-4G Dual-Lens Solar Powered Cellular Trail Camera User Manual

Model: XHF0001

INTRODUCTION

The Generic A10-4G Dual-Lens Solar Powered Cellular Trail Camera is designed for remote monitoring and wildlife observation. It features a dual-camera system, 4G LTE cellular connectivity, night vision, and motion activation, allowing for real-time alerts and remote access via a mobile application. This manual provides essential information for the proper setup, operation, and maintenance of your device.

SETUP

1. Package Contents

- A10-4G Dual-Lens Cellular Trail Camera
- Solar Panel with Mounting Bracket and Cable
- Antenna
- Mounting Strap
- USB Charging Cable
- User Manual

2. Physical Installation

Attach the antenna to the designated port on the camera. Secure the camera to a tree or pole using the provided mounting strap. Position the solar panel to receive maximum sunlight and connect its cable to the camera's charging port. Ensure all connections are secure and the weather-resistant cover for the charging port is properly sealed.

No Wifi? No Problem 4G Unlimited Data Plan



Built-in eSIM Card

Logos for Verizon, T-Mobile, and AT&T.

Unlimited Data Plan

Monthly Event Recording \$ 4.99	Monthly Unlimited 4G Data \$ 16.99	Monthly Event Recording & 4G Unlimited Data Bundle \$ 19.99
Yearly Event Recording \$ 49.99	Yearly Unlimited 4G Data \$ 169.99	Yearly Event Recording & 4G Unlimited Data Bundle \$ 199.99

Tips: 1.No Wi-Fi support.
2.Works only in US & Canada; not outside.
3.Only built - in SIM card is usable; others not supported.

Image: The A10-4G Trail Camera with its solar panel, illustrating the wireless setup and available data plans.

3. Powering On and Memory Card Installation

Open the side compartment of the camera. Insert a MicroSD card (up to 256GB, not included) into the TF card slot. Flip the 'ON' switch to power on the device. The camera will emit a beep to indicate it is powered on.

Video: This video demonstrates the physical setup of the A10-4G camera, including attaching the antenna, mounting the camera and solar panel, and powering on the device. It also shows the app download and pairing process.

4. App Download and Pairing

Download the AIDOVID mobile application by scanning the QR code provided in the manual or on the device packaging. Follow the in-app instructions to pair your camera. This typically involves scanning a QR code on the device for network binding and configuration. The network configuration process may take 3-10 minutes.



Image: The mobile application interface displaying real-time connection, cloud playback options, and precise camera positioning on a map.

OPERATING INSTRUCTIONS

1. Dual-Lens System

The camera features an 84° wide-angle lens for broad area surveillance and a 40° telephoto lens for detailed close-ups. The camera automatically switches between lenses to optimize capture based on detection distance.

DUAL LENS SYSTEM: See the Herd, Zoom the Details



Image: Illustration of the dual-lens system, demonstrating the wide-angle and telephoto capabilities for capturing both broad scenes and detailed subjects.

2. Motion Detection and Night Vision

Equipped with advanced PIR technology, the camera detects movement up to 65ft (20m) away with a rapid 0.2-second trigger speed. For night recording, invisible 940nm infrared LEDs provide illumination up to 50ft (15m) without disturbing wildlife.

ZERO GLOW TECH: Hunt Invisible, Shoot Confident



Ordinary infrared
(red light exposure)

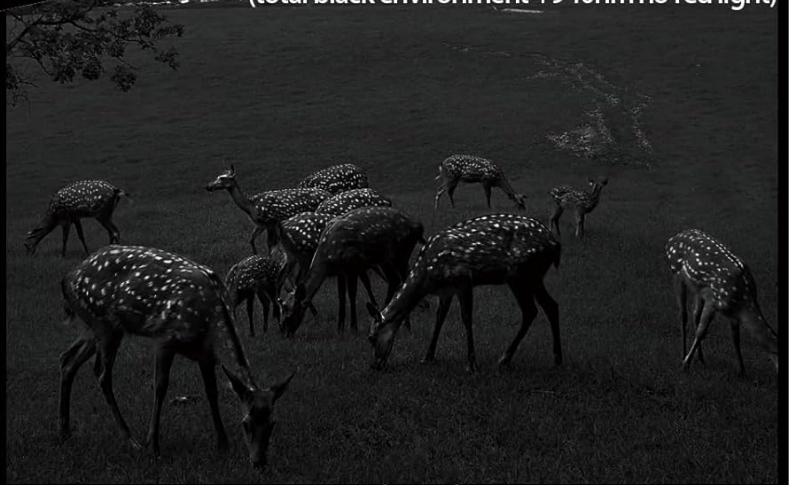


Right A10
(total black environment +940nm no red light)

VS



68°F 07/20/2015 10:33PM CAMERA



CAM001 62°F 17°C 09/01/2021 03:26

Image: A visual comparison highlighting the effectiveness of 940nm no-glow infrared technology for discreet night vision, contrasting it with ordinary infrared that produces visible red light.

3. Real-time Monitoring and Alerts

Through the AIDOVID app, you can stream live 2K video footage to your smartphone from any location with 4G cellular coverage. The camera sends instant intrusion alerts to your phone. You can also utilize two-way audio to communicate or deter trespassers.

Rain or Shine

Alerts in Real - Time

Up to 49ft Night Vision

65ft Daytime Detection

Image: The camera's ability to function in various weather conditions, demonstrating its night vision and daytime detection features, along with real-time alerts sent to a mobile device.

4. Data Plans and Storage

The camera operates on a 4G network (Verizon, AT&T, T-Mobile) via a built-in eSIM. Data plans are available, including a 7-day free trial. Footage can be stored on a MicroSD card (up to 256GB) or via encrypted cloud backup services accessible through the app.

MAINTENANCE

1. Power Management

The camera is powered by 3x18650 Lithium Pack (11,100mAh) rechargeable batteries, continuously charged by a 6W high-efficiency solar panel. Ensure the solar panel is positioned to receive adequate sunlight for optimal battery life. The 2m long cable allows for flexible placement of the solar panel.

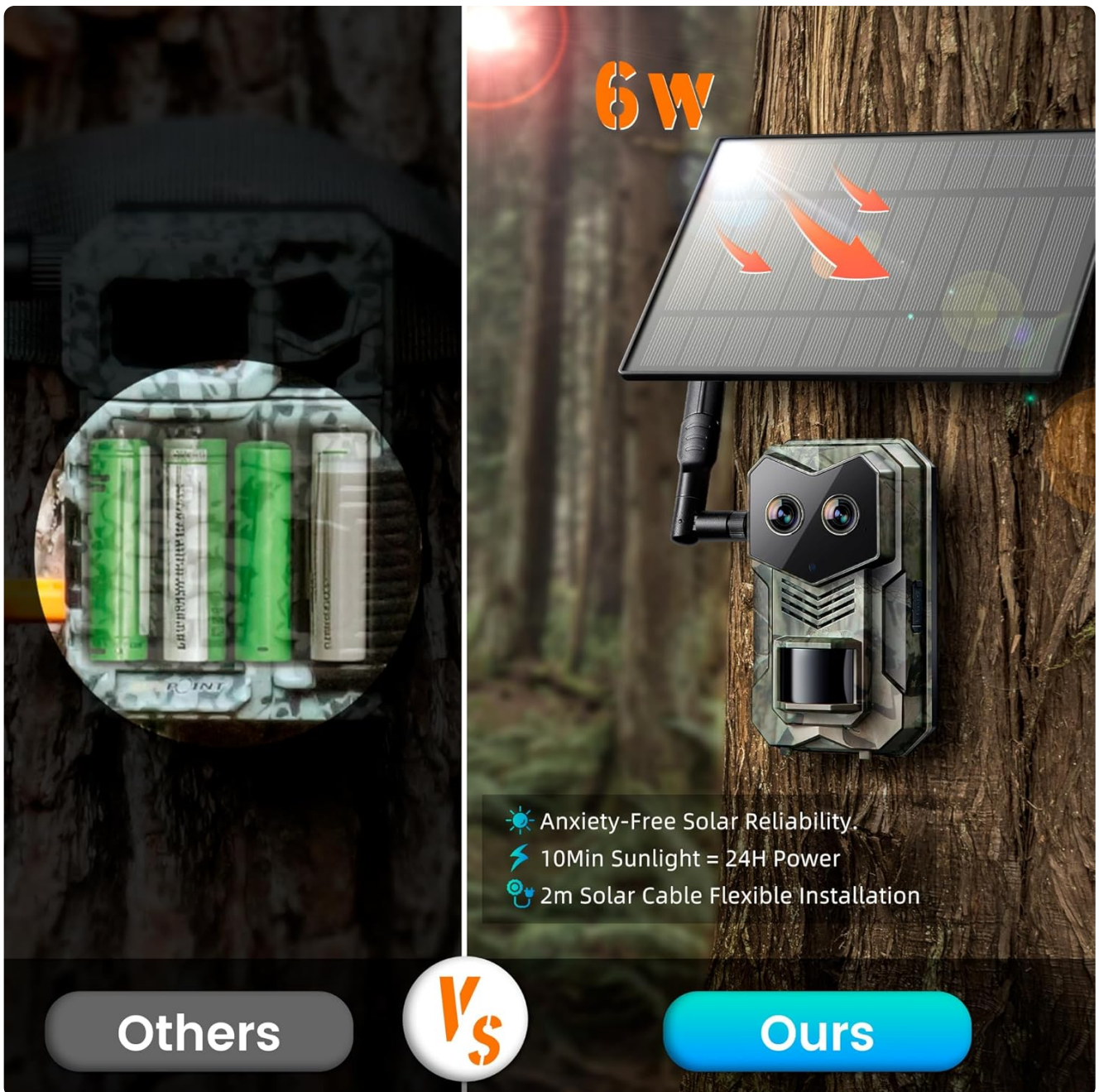


Image: A comparison highlighting the convenience and efficiency of the A10-4G's solar-powered system with rechargeable batteries against traditional battery-dependent cameras.

2. Weather Resistance

The camera is IP65-rated, providing protection against dust and water jets. It is designed to withstand various outdoor conditions, including rain, and temperatures ranging from -20°C to 60°C. Regularly check the charging port cover and other seals to ensure they are intact.

TROUBLESHOOTING

- **No Power:** Ensure batteries are charged and the solar panel is receiving sunlight. Check the power switch is in the 'ON' position.
- **No Network Connection:** Verify 4G cellular coverage in your area. Ensure the antenna is securely attached. Re-attempt app pairing if necessary.
- **Poor Image/Video Quality:** Clean the camera lenses with a soft, dry cloth. Ensure the camera is positioned correctly and not obstructed.
- **Motion Detection Issues:** Check the PIR sensor for obstructions. Adjust detection sensitivity settings in the

app if available.

- **App Connectivity Problems:** Ensure your smartphone has a stable internet connection. Restart the app and the camera.

SPECIFICATIONS

Model Name	XHF0001
Effective Still Resolution	14 MP
Video Capture Resolution	2304*1296P
Frame Rate	15 frames per second
Connectivity Technology	Wireless (4G Cellular, Bluetooth)
Special Features	Dual Lens, GPS Function, Motion Sensor, Color Night Vision, Waterproof
Waterproof Rating	IP65
Night Vision Range	49 Meters (approx. 160 ft)
Power Source	Battery Powered (3x18650 Lithium Pack), Solar Panel (6W)
Flash Memory Supported Size Maximum	256 GB (Micro SD)
Viewing Angle	130 Degrees
Item Dimensions	1.75 x 0.95 x 1.95 inches
Item Weight	1.89 Pounds

WARRANTY AND SUPPORT

For product support, please refer to the contact information provided by your retailer or the manufacturer. Extended protection plans are available for purchase, offering additional coverage for 2-year or 3-year durations, as well as a monthly 'Complete Protect' option. These plans provide peace of mind beyond the standard return policy.