

## LEHMANN LHOVW-1220

# LEHMANN Carpet and Upholstery Cleaner User Manual

Model: LHOVW-1220 | Brand: LEHMANN

## INTRODUCTION

---

Thank you for choosing the LEHMANN Carpet and Upholstery Cleaner. This powerful 1600W wet and dry vacuum cleaner is designed for deep and hygienic cleaning of carpets, upholstery, and hard floors in your home, car, or office. This manual provides essential information for the safe and efficient operation, maintenance, and troubleshooting of your device. Please read it thoroughly before first use and keep it for future reference.

## SAFETY INSTRUCTIONS

---

- Always ensure the power supply matches the voltage specified on the appliance.
- Do not operate the cleaner with a damaged cord or plug.
- Keep hands, feet, loose clothing, and hair away from moving parts.
- Do not vacuum flammable or combustible liquids, hot ashes, or sharp objects.
- Unplug the appliance before cleaning, performing maintenance, or when not in use.
- Use only LEHMANN recommended accessories and cleaning solutions.
- This appliance is not intended for use by persons with reduced physical, sensory, or mental capabilities unless supervised.

## PRODUCT COMPONENTS

---

Familiarize yourself with the components of your LEHMANN Carpet and Upholstery Cleaner:





**Figure 1:** Overview of the LEHMANN Carpet and Upholstery Cleaner and its included accessories. This image displays the main unit, the flexible hose, extension wands, large and small spray nozzles, a HEPA filter, and a foam filter.

- **Main Unit:** Contains the motor, dirty water tank (20 L), and fresh water tank (4.3 L).
- **Flexible Hose:** Connects the main unit to the cleaning attachments.
- **Extension Wands:** Two pieces that connect to the hose for extended reach.
- **Large Spray Nozzle:** For cleaning carpets and larger upholstery areas.
- **Small Spray Nozzle:** For detailed cleaning of smaller upholstery, car interiors, and tight spaces.
- **HEPA Filter:** For dry vacuuming, captures fine dust and allergens.
- **Foam Filter:** For wet vacuuming, protects the motor from liquids.





**Figure 2:** Illustration of the cleaner's dual tank system, highlighting the 4.2-liter fresh water tank and the 20-liter dirty water collection tank. This system allows for efficient cleaning without frequent emptying or refilling.

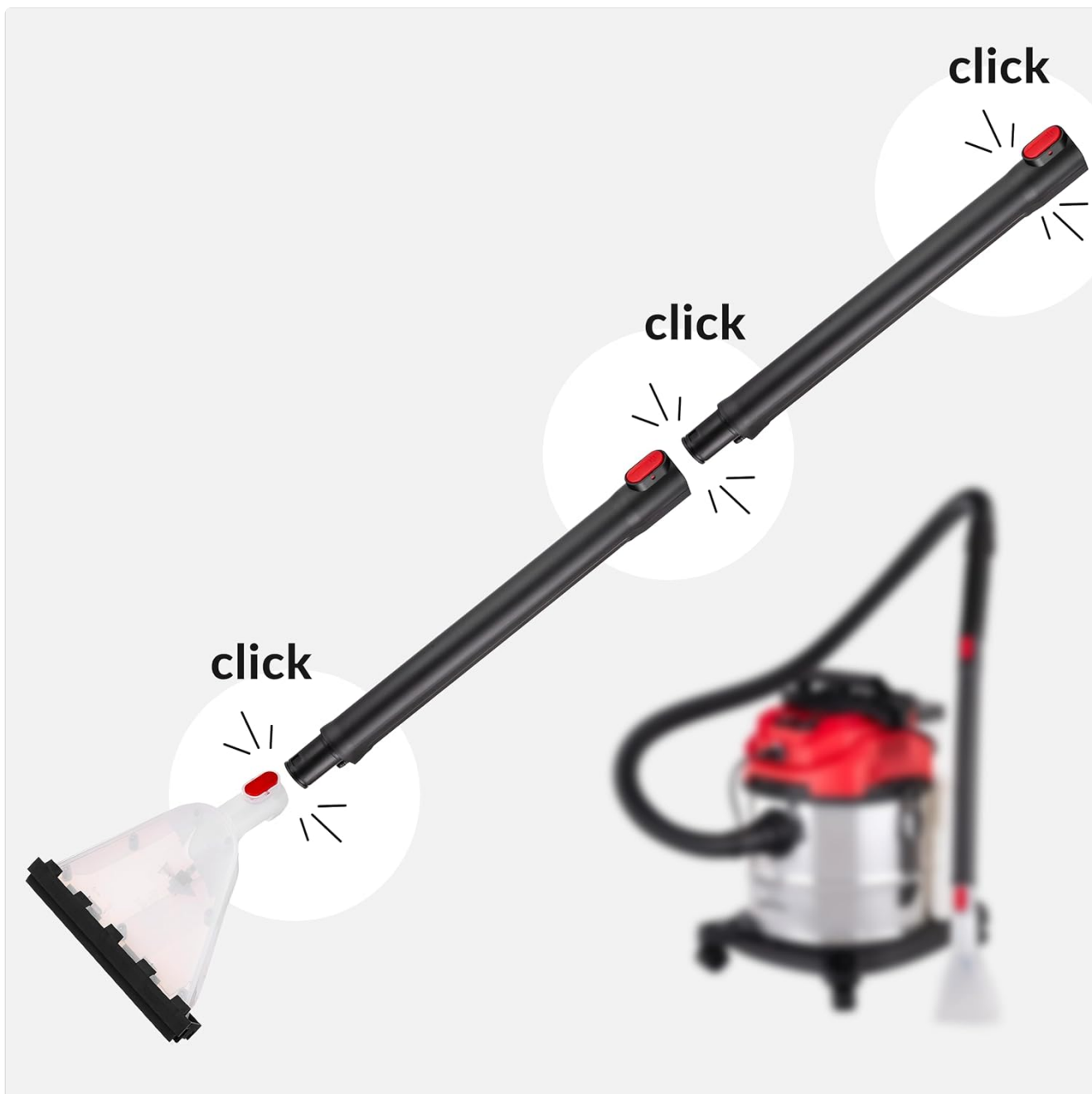
## SETUP

---

Follow these steps for initial assembly and preparation:

1. **Unpack:** Carefully remove all components from the packaging.
2. **Attach Wheels:** Securely attach the caster wheels to the base of the main unit.
3. **Connect Hose:** Insert the flexible hose into the suction inlet on the main unit until it clicks into place.
4. **Assemble Wands and Nozzle:**





**Figure 3:** Step-by-step visual guide demonstrating how to connect the extension wands and the cleaning nozzle using the click-lock mechanism for secure assembly.

- Connect the two extension wands by pushing them together until they click.
- Attach the desired spray nozzle (large or small) to the end of the assembled wands, ensuring it clicks securely.
- Connect the other end of the wands to the flexible hose.

#### 5. Install Filter:

- For *wet cleaning*, ensure the foam filter is properly installed over the motor unit.
- For *dry vacuuming*, install the HEPA filter. Ensure the foam filter is removed for dry use.

6. **Fill Fresh Water Tank:** Open the fresh water tank (4.3 L capacity) and fill it with clean water and a suitable, low-foaming cleaning solution according to the solution's instructions. Do not overfill.

## OPERATION

### Wet Cleaning (Carpet & Upholstery)



This mode is ideal for deep cleaning and stain removal.



**Figure 4:** A user demonstrating the effective use of the LEHMANN cleaner on a carpet, illustrating its ease of maneuverability and cleaning reach.

1. Ensure the foam filter is installed.
2. Plug the power cord into a suitable electrical outlet.
3. Turn on the power switch for suction.
4. Press the spray button on the handle to dispense cleaning solution onto the surface.
5. Move the nozzle slowly over the area, allowing the solution to penetrate and the suction to lift the dirty water. Overlap strokes slightly.
6. For heavily soiled areas, you may need to repeat the process.
7. After cleaning, make several dry passes over the area to remove as much moisture as possible.





**Figure 5:** Detailed view of the cleaning nozzle, showing the spray pattern for applying cleaning solution and the suction path for effective dirt and liquid removal.

## Dry Vacuuming

The cleaner can also be used for general dry vacuuming.

1. Ensure the HEPA filter is installed and the foam filter is removed.
2. Ensure the fresh water tank is empty and the dirty water tank is clean.
3. Attach the appropriate dry vacuuming accessory (not explicitly shown but implied by "dry vacuuming" capability).
4. Turn on the power switch for suction.
5. Vacuum dry dirt and debris as you would with a standard vacuum cleaner.

## Versatile Applications





**Figure 6:** Examples of the cleaner's versatility, demonstrating its effective use for cleaning car interiors, large area carpets, and various types of upholstered furniture.

## MAINTENANCE

---

Regular maintenance ensures optimal performance and extends the life of your cleaner.

### After Each Use (Wet Cleaning)

- **Empty Dirty Water Tank:** Disconnect the power and remove the dirty water tank. Dispose of the dirty water and rinse the tank thoroughly with clean water.
- **Rinse Fresh Water Tank:** Empty any remaining solution and rinse the fresh water tank.
- **Clean Nozzles and Hoses:** Rinse all cleaning nozzles and the flexible hose with clean water to prevent clogging.
- **Clean Foam Filter:** Remove the foam filter and rinse it under running water. Allow it to air dry completely before re-installing or storing.

### Regular Maintenance (Dry Cleaning)



- **Clean HEPA Filter:** The HEPA filter is washable. Tap off loose dirt, then rinse under cool running water until the water runs clear. Allow to air dry completely (24-48 hours) before re-installing. Do not use heat to dry.



**Figure 7:** Visual representation of the washable HEPA and foam filters, emphasizing their role in capturing dust and protecting the motor during wet and dry operations.

- **Check for Blockages:** Periodically check the hose and nozzles for any blockages and clear them if found.
- **Wipe Down Unit:** Wipe the exterior of the main unit with a damp cloth.

## TROUBLESHOOTING

Refer to this section for common issues and their solutions.

Problem	Possible Cause	Solution
Cleaner does not turn on.	No power supply; Power switch off; Damaged cord/plug.	Check power outlet; Ensure switch is ON; Inspect cord for damage.



Problem	Possible Cause	Solution
Low suction power.	Dirty filter; Blockage in hose/nozzle; Dirty water tank full; Improperly assembled.	Clean/replace filter; Clear blockages; Empty dirty water tank; Reassemble correctly.
No spray from nozzle.	Fresh water tank empty; Spray nozzle clogged; Pump issue.	Refill fresh water tank; Clean spray nozzle; Contact customer support if pump issue suspected.
Water leaking.	Tanks not properly sealed; Hose/nozzle connections loose; Tank damaged.	Ensure tanks are securely closed; Check all connections; Inspect tanks for cracks.

SPECIFICATIONS

Technical specifications for the LEHMANN Carpet and Upholstery Cleaner (Model LHOVW-1220).



Figure 8: Product dimensions of the LEHMANN Carpet and Upholstery Cleaner, showing its height, width, and depth for easy storage and planning.

Feature	Detail
Brand	LEHMANN
Model	LHOVW-1220



Feature	Detail
Power	1600 W
Dirty Water Tank Capacity	20 Liters
Fresh Water Tank Capacity	4.3 Liters
Product Dimensions (L x W x H)	44 x 36 x 51.5 cm
Item Weight	7.8 kg
Filter Type	Washable HEPA and Foam Filters
Color	Chrome-Red

## WARRANTY AND SUPPORT

LEHMANN products are manufactured to high-quality standards. For warranty information, technical support, or to order replacement parts, please refer to the warranty card included with your purchase or visit the official LEHMANN website. Please have your model number (LHOVW-1220) and purchase date ready when contacting support. For further assistance, you may also refer to the LEHMANN brand store on Amazon: [LEHMANN Store](#)