

## Monster E26black

# Monster Open Ear AC500 Headphones User Manual

Model: E26black

## INTRODUCTION

Thank you for choosing the Monster Open Ear AC500 Headphones. These innovative clip-on earbuds are designed to provide a comfortable, secure fit and high-fidelity sound while keeping you aware of your surroundings. Featuring Bluetooth 5.3 technology, IPX5 water resistance, and extended battery life, they are perfect for sports, workouts, and daily use. This manual will guide you through the setup, operation, and maintenance of your new headphones.

## SAFETY INFORMATION

- Do not disassemble or modify the product.
- Keep the charging case and earbuds dry. Do not expose to extreme temperatures.
- Avoid listening at high volume levels for extended periods to prevent hearing damage.
- Use only the provided charging cable or a certified equivalent.
- Dispose of batteries and electronic components responsibly according to local regulations.

## PACKAGE CONTENTS

Please check the package contents upon opening:

- Monster Open Ear AC500 Headphones (Left and Right Earbuds)
- Charging Case
- USB Charging Cable
- User Manual (this document)

## PRODUCT OVERVIEW

Familiarize yourself with the components of your Monster Open Ear AC500 Headphones.



Image: The Monster Open Ear AC500 headphones, showing both earbuds and the open charging case. The earbuds are black with gold Monster logos, and the charging case is also black with a gold Monster logo on the lid.

# Pure Monster Sound

Featured 15mm dynamic drivers to provide rich bass and crystal-clear highs



Image: An exploded diagram illustrating the internal components of the Monster Open Ear AC500 earbud, highlighting the 13mm dynamic speaker technology responsible for Pure Monster Sound. Various layers of the speaker driver are shown.





Lightweight



Flexible and Soft

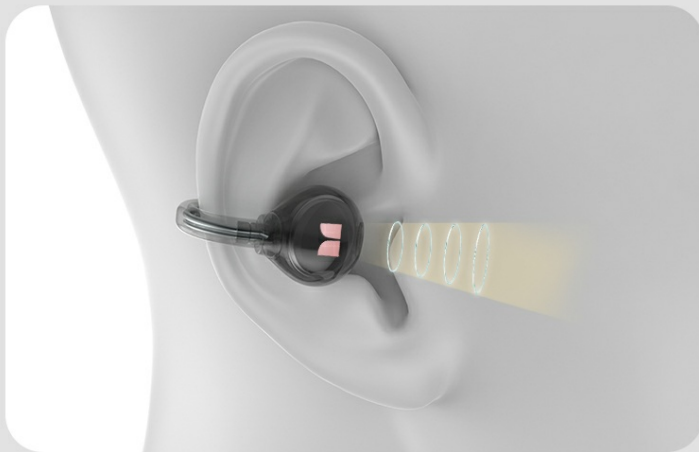


Comfortable Fit

# Ultra Lightweight and Comfortable Fit

Image: A person wearing the Monster Open Ear AC500 headphone, with insets highlighting 'Lightweight', 'Flexible and Soft', and 'Comfortable Fit' aspects of the earbuds, emphasizing their ergonomic design.





## Directional Acoustics Technology

Monster earbuds transmit sound waves in a precise direction toward your ears, effectively reducing the sound leakage problem of open-ear earbuds and enhancing bass quality.

Image: A diagram showing an ear with the Monster earbud clipped on, illustrating sound waves directed precisely into the ear canal, highlighting the Directional Acoustics Technology that reduces sound leakage and enhances bass.

## Lightweight Comfort

Each earbud weighs only 5 grams, providing a cloud-like lightness. You can enjoy an incredibly comfortable and effortless listening experience.



Image: Two Monster earbuds depicted floating in a cloud-like environment, with text emphasizing 'Lightweight Comfort' and stating each earbud weighs only 5 grams, providing an effortless listening experience.

## SETUP

### 1. Charging the Headphones and Case

Before first use, fully charge both the earbuds and the charging case. The charging case provides up to 30 hours of total playtime, with 6 hours on a single earbud charge.

1. Place the earbuds into the charging case, ensuring they are correctly seated.
2. Connect the USB charging cable to the charging port on the case and to a power source (e.g., computer USB port, wall adapter).
3. The indicator light on the charging case will show charging status. Once fully charged, the light will change or turn off.

# All Day Battery Life



**6** Hours  
Single Charge

**30** Hours  
with Charging Case

Up to 30 hours playtime, easily use it all day

Image: An illustration showing the Monster Open Ear AC500 headphones in their charging case, with text indicating "6 Hours Single Charge" and "30 Hours with Charging Case," emphasizing the total battery life.

## 2. Bluetooth Pairing

The Monster Open Ear AC500 Headphones utilize Bluetooth 5.3 for a stable and efficient connection.

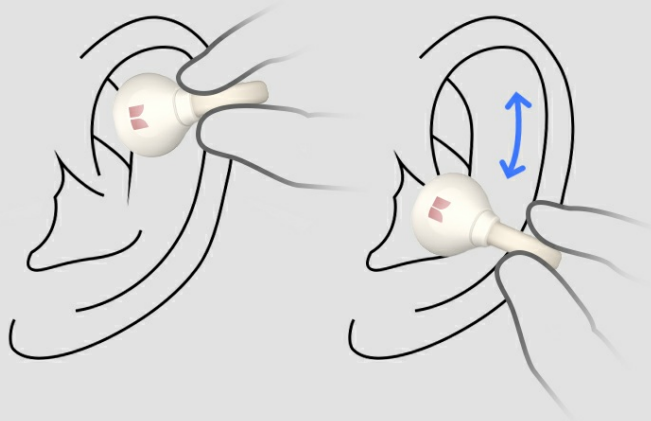
1. Open the charging case. The earbuds will automatically enter pairing mode.
2. On your device (smartphone, tablet, computer), enable Bluetooth.
3. Search for "Monster Open Ear AC500" in the list of available Bluetooth devices.
4. Select "Monster Open Ear AC500" to connect. Once connected, you will hear a confirmation tone.
5. The earbuds will automatically reconnect to the last paired device when taken out of the case.

# Bluetooth 5.3 Technology

Link the headphones and you devices with a smooth, stable and lag-free connection.



Image: A smartphone screen displaying Bluetooth settings, showing "Monster Open Ear AC500" as a connected device. The charging case with earbuds is next to a laptop, illustrating the Bluetooth 5.3 connection process.



## How to Wear

1. Clip the earbuds on your ear
2. Adjust it up and down until you feel satisfied and comfortable
3. Start to enjoy your favorite melody and rhythm

Image: A transparent view of a Monster earbud, showcasing its internal components and highlighting the upgraded Bluetooth 5.3 technology for stable and faster transmission.



## How to Control

### Double Tap ●●

During Call	L / R	Answer/End Call
Playing Music	L / R	Play/Pause Music

### One Tap ●

L	Volume Up
R	Volume Down

### Long-press ●

L	Previous Track
R	Next Track

Image: The Monster earbuds in their charging case next to a smartphone and laptop, illustrating their compatibility with phones, tablets, computers, and other Bluetooth-enabled devices.

### 3. How to Wear

The open-ear clip-on design ensures a secure and comfortable fit without entering your ear canal.

1. Gently clip the earbud onto your ear, positioning the speaker part near your ear canal.
2. Adjust the earbud slightly up or down until it feels secure and comfortable. The flexible design adapts to various ear shapes.
3. Ensure the earbud is stable and does not feel loose, especially during physical activity.



# Open-Ear Clip-On Design

Adapt effortlessly to various ear shapes, fit the ear securely and not easy to fall off, ensuring stable and comfortable wear.

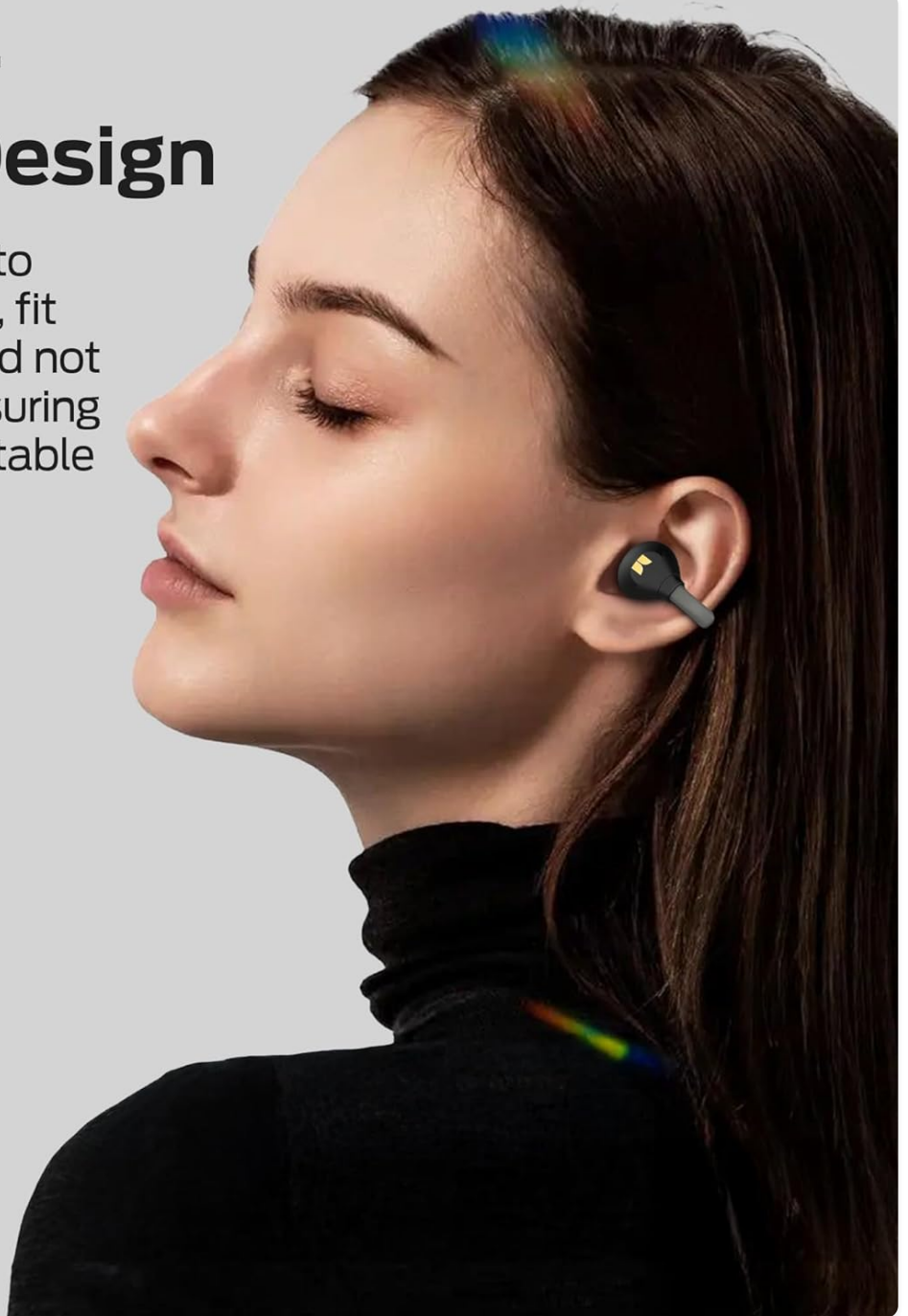


Image: A close-up of a person wearing the Monster Open Ear AC500 headphone on their ear, demonstrating the clip-on design. The earbud is black with a gold Monster logo visible.



## Upgraded Bluetooth 5.3 Technology

The Monster wireless headphones adopt upgraded Bluetooth 5.3 technology, ensuring a stable connection and faster transmission.

Image: A diagram illustrating the correct way to wear the Monster Open Ear AC500 headphones, showing the earbud clipping onto the ear and suggesting vertical adjustment for comfort.

## Upgraded Clip-On Design

Compact; Comfortable; Stable



No Pain; Not Easy to Fall Off



Ear Discomfort



Ear Pain

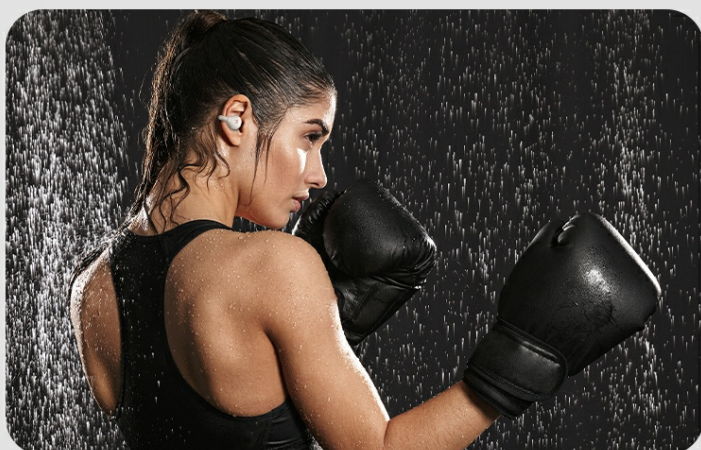


Fall off Easily



## Other Earbuds

Image: A comparison graphic showing the Monster's upgraded clip-on design (no pain, not easy to fall off) versus traditional earbuds that can cause ear discomfort, pain, or fall off easily.



## Sweatproof & Waterproof

Monster wireless earbuds feature IPX5 sweatproof and waterproof. It's ideal for any outdoor and sports activity, from a light jog to a breathtaking boxing.

Image: A person in athletic wear performing an exercise, wearing the Monster earbuds, illustrating the flexible and stable clip-on cuff design that ensures the earbuds stay securely in place during movement.



## Open Ear Design Stay Connected

Monster earbuds adopt open-ear design that allows you to stay aware of your surroundings while enjoying music and keep you safe.

Image: A person wearing a cycling helmet and the Monster earbuds while riding a bicycle, highlighting the open-ear design that allows users to stay aware of their surroundings for safety during outdoor activities.

## OPERATING INSTRUCTIONS

### Touch Controls

Action	Earbud (L/R)	Function
Double Tap	L/R	Answer/End Call, Play/Pause Music
One Tap	L	Volume Up
One Tap	R	Volume Down
Long Press	L	Previous Track
Long Press	R	Next Track

## Flexible & Stable Fit

The flexible clip-on cuff design can fit the ear securely and are not easy to fall off.  
You can feel free to walk, run, and even jump.

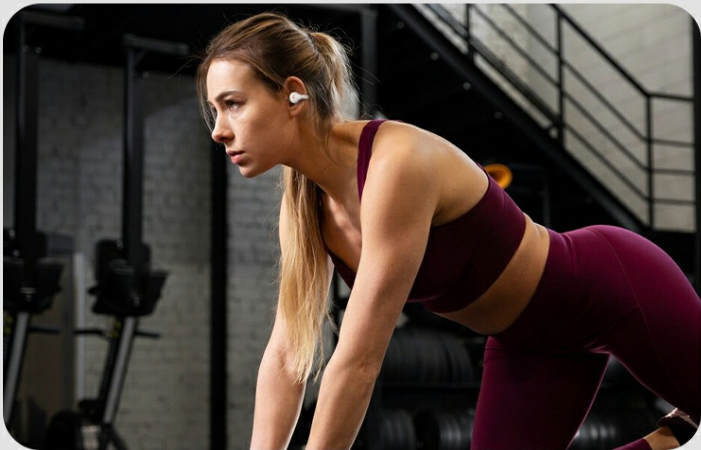


Image: A visual guide to the touch controls on the Monster Open Ear AC500 headphones, showing the location of the touch sensor and listing actions like double tap, one tap, and long press for music and call management.

### Call Functions



- **Answer/End Call:** Double tap either earbud.
- **Reject Call:** Long press either earbud during an incoming call.
- **Crystal-Clear Call:** The dual-microphone design enhances voice clarity and isolates background noise for clear conversations.



## Crystal-Clear Call

A dual-microphone design enhancing voice and canceling background noise, maintaining crystal clear call, even in a busy environment.

Image: A person smiling and holding a smartphone to their ear, wearing the Monster Open Ear AC500 headphones, illustrating the clear call feature.

## MAINTENANCE

### Cleaning

- Wipe the earbuds and charging case with a soft, dry, lint-free cloth.
- Do not use abrasive cleaners, alcohol, or chemical solvents.
- Ensure charging contacts are clean and dry before placing earbuds in the case.



## Storage

- Store the headphones in their charging case when not in use to protect them and keep them charged.
- Store in a cool, dry place away from direct sunlight and extreme temperatures.

## Water Resistance (IPX5)

The Monster Open Ear AC500 Headphones are IPX5 water-resistant, meaning they can withstand splashes and sweat. They are suitable for workouts and outdoor activities.

- Do not submerge the earbuds in water.
- The charging case is not water-resistant. Keep it dry.
- Ensure earbuds are completely dry before placing them back into the charging case to prevent damage.

# IPX5 Waterproof & Sweatproof



Image: Two Monster Open Ear AC500 earbuds shown with water droplets on them, illustrating their IPX5 waterproof and sweatproof capabilities.

Problem	Possible Solution
Earbuds not pairing/connecting.	<ul style="list-style-type: none"><li>• Ensure earbuds are charged and taken out of the case.</li><li>• Turn off and on Bluetooth on your device.</li><li>• Forget "Monster Open Ear AC500" from your device's Bluetooth list and re-pair.</li><li>• Try pairing with another device to check earbud functionality.</li></ul>
No sound or low volume.	<ul style="list-style-type: none"><li>• Adjust volume on both the earbuds and your connected device.</li><li>• Ensure earbuds are properly seated in your ears.</li><li>• Check if the earbuds are connected to the correct device.</li></ul>
Earbuds not charging.	<ul style="list-style-type: none"><li>• Ensure earbuds are correctly placed in the charging case.</li><li>• Check the charging cable and power source.</li><li>• Clean the charging contacts on both earbuds and the case.</li></ul>
Intermittent connection/sound.	<ul style="list-style-type: none"><li>• Move closer to your connected device.</li><li>• Avoid strong electromagnetic interference.</li><li>• Ensure no physical obstructions between earbuds and device.</li></ul>

## SPECIFICATIONS

- **Model:** E26black
- **Connectivity:** Bluetooth 5.3
- **Ear Placement:** Open Ear, Clip-On
- **Water Resistance:** IPX5
- **Playtime:** Up to 6 hours (earbuds), Up to 30 hours (with charging case)
- **Control Type:** Touch Control
- **Material:** Plastic
- **Included Components:** User Manual, Earphones, Wireless Charging Case
- **Battery Type:** Lithium Ion (included)
- **Item Weight:** 150 g (Parcel Dimensions)

## WARRANTY AND SUPPORT

Monster products are designed and manufactured to the highest quality standards. For warranty information and technical support, please refer to the warranty card included in your package or visit the official Monster website. Please retain your proof of purchase for any warranty claims.

For further assistance, you may contact Monster customer service through their official channels.



