

36350221000

Kenmore/GE/Hotpoint Refrigerator Ice Dispenser Solenoid Service Kit Installation Manual

Model: Ice Dispenser Solenoid Service Kit (Replacement for various Kenmore, GE, Hotpoint models)

1. INTRODUCTION

This manual provides essential information for the installation and maintenance of the Ice Dispenser Solenoid Service Kit. This kit is designed as a replacement part for the ice dispenser mechanism in various Kenmore, General Electric, and Hotpoint refrigerator models. Please read these instructions carefully before proceeding with installation to ensure proper function and safety.

2. SAFETY INFORMATION

WARNING: Appliance repair can involve electrical and water hazards. Improper installation may result in property damage, personal injury, or death. If you are not comfortable performing this repair, it is recommended to seek assistance from a qualified appliance technician.

- Always disconnect power to the refrigerator by unplugging it from the wall outlet or turning off the circuit breaker before beginning any repair.
- Turn off the water supply to the refrigerator before working on any water-related components, including the ice dispenser.
- Wear appropriate personal protective equipment, such as gloves and safety glasses.
- Ensure all connections are secure and properly insulated after installation.

3. PRODUCT OVERVIEW

The Ice Dispenser Solenoid Service Kit includes the necessary components to replace a faulty solenoid in your refrigerator's ice dispenser. The solenoid is an electromagnetic device that controls the flow of ice or water. This kit is designed for direct replacement in compatible models.



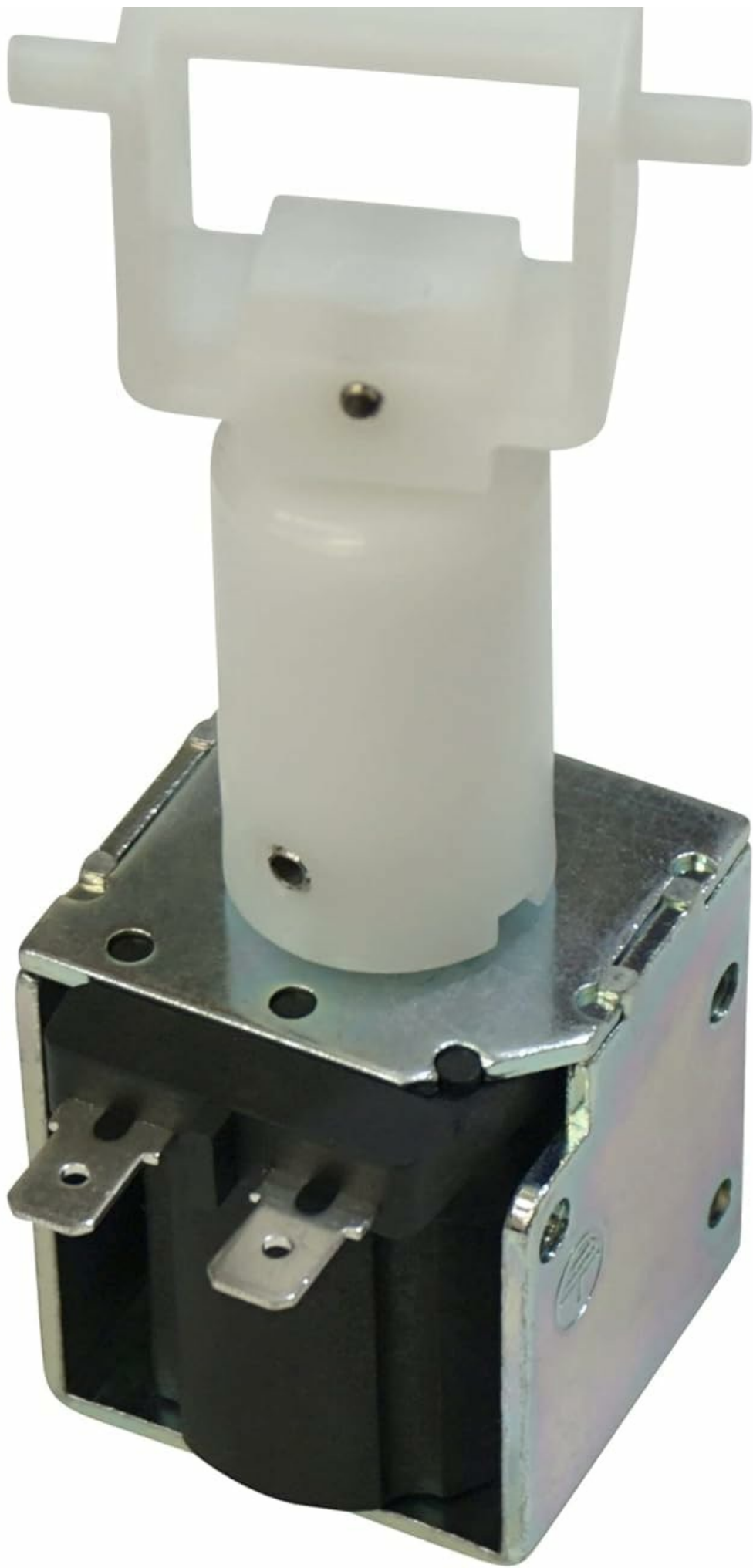


Figure 1: The Ice Dispenser Solenoid Service Kit. This image shows the solenoid assembly with its electrical terminals and plastic actuator components.

3.1 Compatibility

This service kit is compatible with a wide range of Kenmore, General Electric, and Hotpoint refrigerator models. Please verify your refrigerator's model number against the list provided on the product packaging or original product listing to confirm compatibility. Examples of compatible models include:

- Kenmore: 36350221000, 36350222000, 36357552790, etc.
- General Electric: 36359575991, 3639512412, 3639520810, etc.
- Hotpoint: CSC22GRSAAD, CSC24DRAAD, CSH22GRATAAA, etc.

If you are unsure about compatibility, contact the seller or a qualified technician for advice.

4. SETUP AND INSTALLATION

The following steps provide a general guide for replacing the ice dispenser solenoid. Specific procedures may vary slightly depending on your refrigerator model. Refer to your refrigerator's service manual for detailed instructions if available.

1. Prepare for Installation:

- Disconnect power to the refrigerator.
- Turn off the water supply to the refrigerator.
- Empty the ice bin and remove any ice or water from the dispenser area.

2. Access the Solenoid:

- Locate the ice dispenser assembly, typically found in the freezer door.
- Carefully remove any covers, panels, or screws that obstruct access to the solenoid. This may require a screwdriver or other basic tools.

3. Remove the Old Solenoid:

- Disconnect the electrical wires connected to the old solenoid. Note their positions for re-connection.
- Unscrew or unclip the old solenoid from its mounting bracket.
- Carefully remove the old solenoid and any associated linkages or springs.

4. Install the New Solenoid:

- Position the new solenoid service kit in the same location as the old one.
- Secure the new solenoid to its mounting bracket using the original screws or clips.
- Connect the electrical wires to the new solenoid, ensuring they match the original configuration.
- Reattach any linkages or springs that connect the solenoid to the ice dispenser mechanism.

5. Reassemble and Test:

- Replace all covers and panels that were removed.
- Restore the water supply to the refrigerator.
- Reconnect power to the refrigerator.
- Test the ice dispenser function to ensure the solenoid is operating correctly. Dispense ice and water a few times to confirm proper operation.

5. OPERATING INSTRUCTIONS (POST-INSTALLATION)

After successful installation of the Ice Dispenser Solenoid Service Kit, the ice dispenser should function as intended by your refrigerator's design. No special operating procedures are required for the solenoid itself, as it is an internal component.

- Ensure the ice maker is turned on and the water supply is connected and flowing.
- Allow several hours for the ice maker to produce a full bin of ice after installation.
- Regularly check the ice dispenser for proper ice and water dispensing.

6. MAINTENANCE

The ice dispenser solenoid itself is a sealed unit and does not require routine maintenance. However, general maintenance of your refrigerator's ice and water dispenser system can help prolong the life of all components, including the solenoid.

- **Clean the Dispenser Area:** Regularly clean the ice and water dispenser chute and tray to prevent buildup of ice, debris, or mold.
- **Check Water Filter:** Replace your refrigerator's water filter according to the manufacturer's recommendations to ensure clean water supply to the ice maker.
- **Inspect for Leaks:** Periodically check for any signs of water leaks around the dispenser or behind the refrigerator. Address any leaks promptly.

7. TROUBLESHOOTING

If you experience issues with your ice dispenser after installing the solenoid service kit, consider the following common troubleshooting steps:

Problem	Possible Cause	Solution
No ice or water dispensed.	Refrigerator power off. Water supply off. Ice maker turned off. Solenoid wiring loose. New solenoid faulty.	Check power connection. Ensure water valve is open. Turn on ice maker switch. Inspect and secure wiring (with power disconnected). Contact seller for replacement.
Ice dispenser makes noise but no ice.	Ice jammed in chute. Actuator linkage issue.	Clear ice jam. Inspect solenoid's mechanical linkage.
Water leaks from dispenser.	Water line connection loose. Solenoid valve not closing fully.	Check and tighten water line connections. Verify solenoid installation; contact seller if issue persists.

If these steps do not resolve the issue, it is recommended to consult a qualified appliance repair technician.

8. SPECIFICATIONS

- **Product Type:** Ice Dispenser Solenoid Service Kit
- **Brand:** Generic (Aftermarket Replacement Part)
- **Compatible Brands:** Kenmore, General Electric, Hotpoint
- **Typical Dimensions:** Approximately 1"D x 1"W x 1"H (Note: Dimensions are approximate for the solenoid component itself and may vary slightly.)
- **Voltage:** 1V (This value seems unusually low based on typical appliance solenoids. Users should verify their appliance's specific voltage requirements.)
- **Capacity:** 1 Cubic Centimeter (This refers to the internal volume of the solenoid, not ice capacity.)
- **Item Model Number (Reference):** 36350221000 (This is one of many compatible model numbers, not the kit's unique model number.)

9. WARRANTY AND SUPPORT

This product comes with a **90-day money-back guarantee** from the date of purchase. We are confident in the quality of this replacement part. If you are not satisfied with the product, a refund will be provided.

For any questions regarding compatibility, installation, or product performance, please contact the seller directly. They are committed to resolving your problem within 24 hours.

Note: This is an aftermarket replacement part and is not manufactured by Kenmore, General Electric, or Hotpoint.