

VEVOR PY-2501SS

VEVOR PY-2501SS Jewelry Cabinet Armoire Instruction Manual

Model: PY-2501SS | Brand: VEVOR

INTRODUCTION

Thank you for choosing the VEVOR PY-2501SS Jewelry Cabinet Armoire. This standing wood jewelry storage chest is designed to provide organized and elegant storage for your valuable jewelry. It features a multi-layered design with drawers, a flip-top mirror, and side doors with necklace hooks to keep your items neatly stored and easily accessible.

Please read this manual thoroughly before assembly and use to ensure proper function and longevity of your jewelry armoire.

KEY FEATURES

- **Multi-Layered Design:** Features a multi-compartment side-opening and drawer design for rings, necklaces, and earrings.
- **Large Capacity Drawers:** Includes 3 spacious drawers for organizing various jewelry items.
- **Top Flip Mirror:** A flip-open mirror with 4-compartment tray and ring slots for instant visibility and easy access.
- **Tangle-Free Necklace Hooks:** 3 hooks on each side door, ideally sized for long necklaces to prevent tangling.
- **Durable Construction:** Made with high-quality metal handles, sturdy MDF construction, and durable wooden legs.

PACKAGE CONTENTS

Ensure all items are present and in good condition before proceeding with assembly.

- 1 x Jewelry Box Body
- 4 x Supporting Legs
- 8 x Nickel Plated Flat Head Hex Screw (M6 x 30 mm)
- 1 x Allen Wrench

- 1 x User Manual (this document)

SETUP AND ASSEMBLY

The VEVOR Jewelry Cabinet Armoire comes mostly pre-assembled. Only the supporting legs require attachment.

1. Carefully unbox the jewelry armoire and place the main body upside down on a soft, clean surface to prevent scratches.
2. Identify the four supporting legs and the pre-drilled holes on the bottom of the armoire body.
3. Align each supporting leg with the corresponding holes. Insert two M6 x 30 mm hex screws into each leg.
4. Using the provided Allen wrench, tighten all 8 screws until the legs are securely fastened. Do not overtighten.
5. Carefully turn the assembled armoire upright and place it in your desired location.



Item Model Number: **PY-2501SS**

Color: **Wood Color**

Material: **MDF+Wood Grain Paper**

Product Net Weight:

19.8 lbs±3% / 9 kg±3%

Product Size:

13x10x33.7 in / 330x255x855 mm

Packing Contents

1 x Jewelry Box Body

4 x Supporting Legs

8 x Nickel Plated Flat Head

Hexagonal Screw (M6×30mm)

1 x Allen Wrench

1 x User Manual

Image: Dimensions and included components for assembly.

Your browser does not support the video tag.

Video: Step-by-step guide on how to install the supporting legs of the jewelry armoire.

OPERATING INSTRUCTIONS

Top Flip Mirror and Compartments

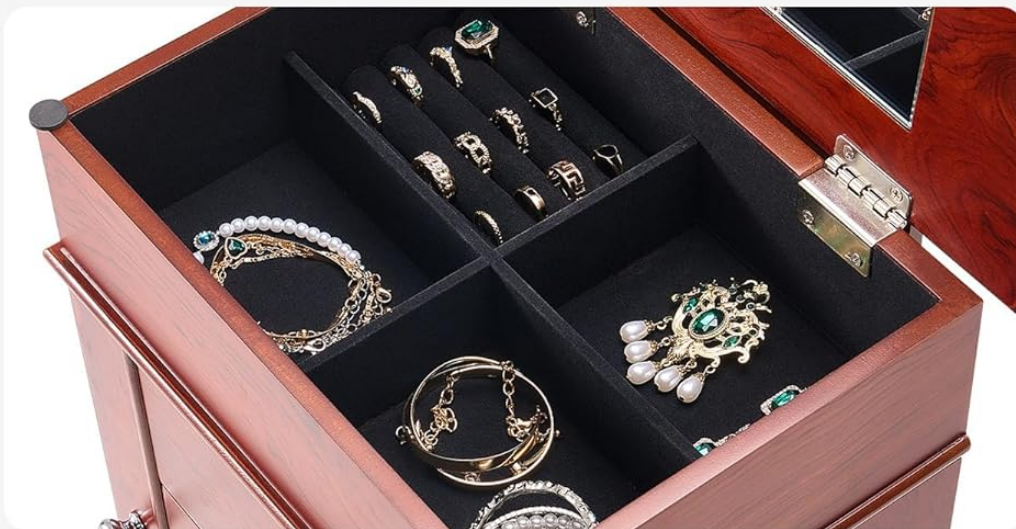
Gently lift the top lid of the armoire to reveal a built-in mirror and a tray with 4 organized compartments. These compartments are ideal for storing rings, stud earrings, and other small accessories. The mirror allows for

convenient jewelry pairing and appearance checks.

Top Flip Mirror & 4 Organized Compartments



Check your outfit and accessory pairing in a snap



Organized storage, effortless access

Image: Top flip mirror and organized compartments.

Drawers

The armoire features 3 spacious drawers. Each drawer is lined with soft material to protect your jewelry from scratches. Use these drawers to store larger items like bracelets, watches, or other accessories.

3 Drawers Design

for larger storage capacity



Image: The three spacious drawers for various jewelry storage.

Side Doors with Necklace Hooks

Open the two side doors to access 3 hooks on each side, totaling 6 hooks. These hooks are designed to hang necklaces and prevent them from tangling, keeping them organized and ready to wear.

Double Side Doors

3 Hooks for every side



Image: Side doors with necklace hooks for tangle-free storage.

Your browser does not support the video tag.

Video: A product overview demonstrating the features and compartments of the standing jewelry armoire.

MAINTENANCE

- **Cleaning:** Wipe the exterior surfaces with a soft, dry cloth. For stubborn marks, use a slightly damp cloth and mild wood cleaner, then dry immediately.
- **Interior Care:** The velvet-lined interior can be gently vacuumed with a brush attachment or wiped with a lint-

free cloth to remove dust.

- **Avoid Moisture:** Keep the armoire away from excessive moisture and direct sunlight to prevent warping or fading of the wood.
- **Hardware:** Periodically check that all screws and hinges are secure. Tighten if necessary.

TROUBLESHOOTING

- **Drawers sticking:** Ensure the drawers are aligned properly. If they are stiff, a small amount of furniture wax on the runners may help.
- **Lid or doors not closing properly:** Check for any obstructions. Ensure the armoire is on a level surface.
- **Wobbling:** Verify that all supporting legs are securely tightened. Adjust the armoire's position on an even surface.

SPECIFICATIONS

Attribute	Detail
Brand	VEVOR
Model Number	PY-2501SS
Style	Modern
Special Feature	Mirror
Product Dimensions	10"D x 13"W x 33.7"H (255 x 330 x 855 mm)
Shape	Rectangular
Number of Drawers	3
Item Weight	19.84 Pounds (9 kg)
Material	MDF + Wood Grain Paper
UPC	197988336679

WARRANTY AND SUPPORT

For warranty information or technical support, please refer to the contact details provided with your purchase or visit the official VEVOR website. Keep your purchase receipt as proof of purchase for any warranty claims.

