

## OKP L6 Aqua Robot Vacuum and Mop Combo

# OKP LiDAR Robot Vacuum and Mop Combo User Manual

Model: L6 Aqua Robot Vacuum and Mop Combo

## 1. INTRODUCTION

Welcome to the user manual for your new OKP LiDAR Robot Vacuum and Mop Combo. This advanced robotic cleaner is designed to provide efficient and thorough cleaning for your home, combining powerful vacuuming with effective mopping capabilities. Featuring dToF LiDAR navigation, multi-floor mapping, and smart obstacle avoidance, the L6 Aqua ensures comprehensive coverage and a hassle-free cleaning experience. Please read this manual carefully before using the product to ensure proper operation and maintenance.



Image: The OKP L6 Aqua Robot Vacuum and Mop Combo, shown with its charging dock, a mop pad, and side brushes, highlighting its compact design and included accessories.

## 2. PRODUCT COMPONENTS

Before starting, please ensure all components are present in the packaging:

- OKP L6 Aqua Robot Vacuum and Mop Combo
- Charging Dock
- Power Adapter
- Side Brushes (2 pairs)
- Washable Mop Pad (1 or more)
- Cleaning Tool
- User Manual (this document)



Image: A visual representation of the OKP L6 Aqua robot vacuum, its charging station, and various cleaning accessories like side brushes and a mop pad, as they appear when unboxed.

## 3. SETUP

### 3.1 Charging Dock Placement

Place the charging dock against a wall in an open, uncluttered area. Ensure there is at least 0.5 meters (1.6 feet) of clear space on both sides of the dock and 1.5 meters (4.9 feet) in front of it. Connect the power adapter to the dock and plug it into a wall outlet.

### 3.2 Initial Charging

Before first use, fully charge the robot vacuum. Place the robot onto the charging dock, ensuring the charging contacts align. The indicator light on the robot will show charging status. A full charge typically takes 4-5 hours.

### 3.3 App Connection and Wi-Fi Setup

Download the "OKP" app from your mobile device's app store. Follow the in-app instructions to connect your robot vacuum to your home's 2.4GHz Wi-Fi network. This enables remote control, scheduling, and access to advanced features like mapping and no-go zones.

# Efficient Cleaning with Breakpoint Technology

When the battery runs low (15%), the OKP L6 Aqua robot vacuum auto-docks for charging and resumes cleaning from the exact breakpoint once recharged to 80%. No missed spots, no wasted effort.

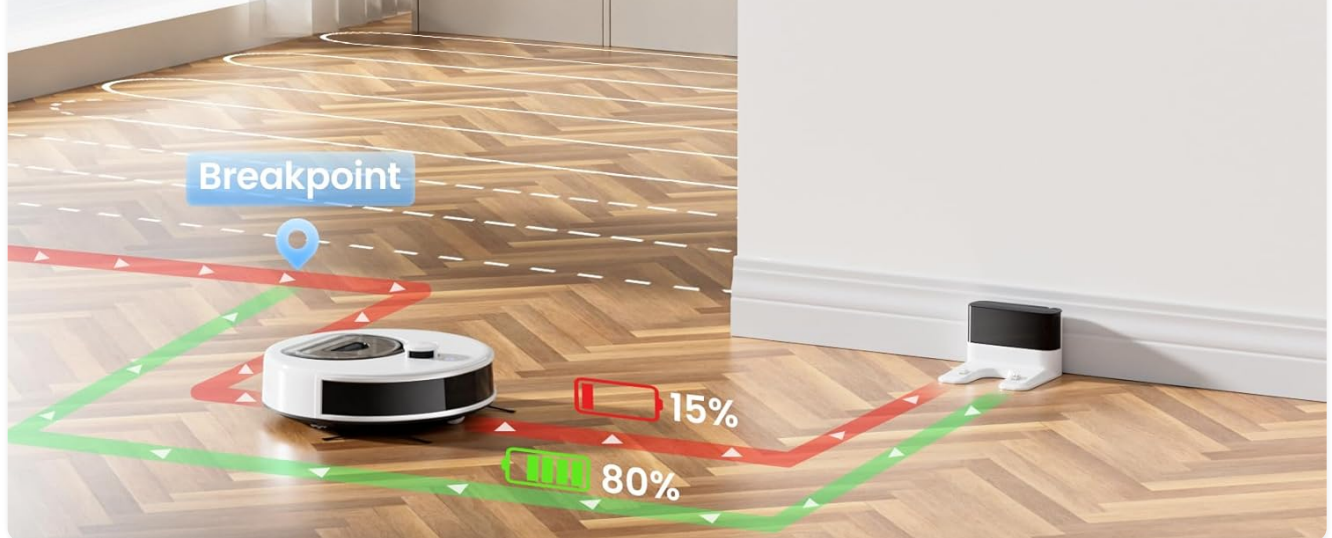


Image: A smartphone screen displaying the OKP app interface, showing options for automatic, zone, spot, and scheduled cleaning, along with map editing capabilities.



## Customizable Maps & No-Go Zones

Use the electronic invisible wall to keep your robot vacuum out of unwanted areas

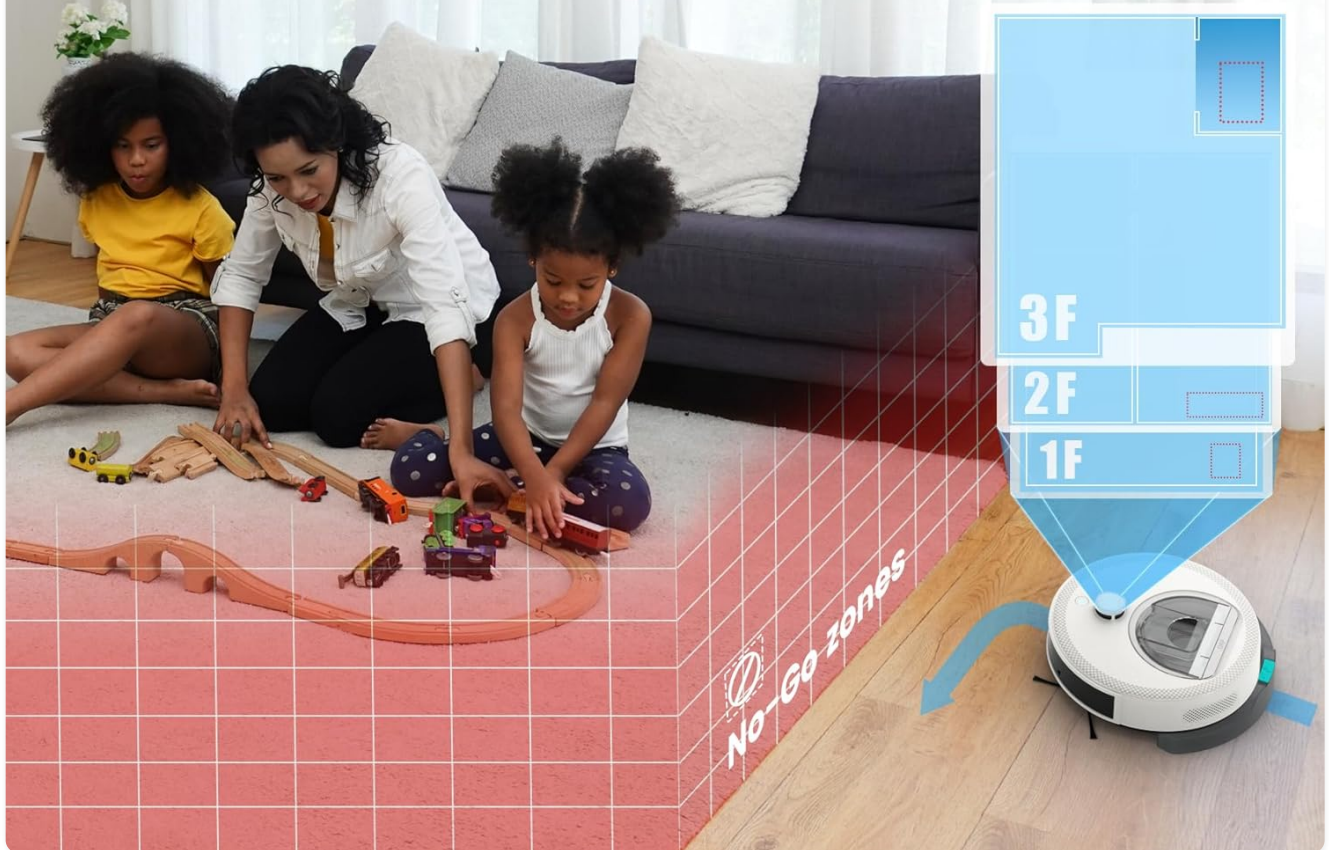


Image: A person using a smartphone to control the OKP robot vacuum, illustrating the convenience of app and voice control via Wi-Fi, Amazon Alexa, and Google Home.

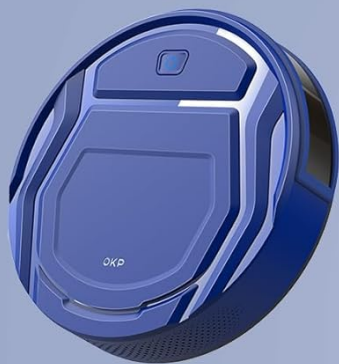
## 4. OPERATING INSTRUCTIONS

### 4.1 Cleaning Modes

The L6 Aqua offers various cleaning modes to suit your needs, accessible via the OKP app or the robot's physical button:

- **Auto Cleaning:** The robot intelligently cleans the entire area.
- **Zone Cleaning:** Clean specific areas defined on the map in the app.
- **Spot Cleaning:** Focuses on a small, concentrated area for intensive cleaning.
- **Edge Cleaning:** Cleans along walls and furniture edges.
- **Scheduled Cleaning:** Set specific times for the robot to clean automatically.

# Feature Upgrade Comparison: Old vs. New Version



**VS**



## Gvroscope Navigation

## Functions

## L6 Aqua

✗	360° Laser Mapping and Navigation	✓
✗	Precise Cleaning Path	✓
✓	Auto Recharge	✓
✗	Resume Cleaning	✓
✗	Targeted Area Cleaning	✓
✗	Custom Cleaning Modes	✓
★★	Anti-Stuck Navigation	★★★★★
70%	No Overlap Cleaning	99.99%
✗	No-Go Zones	8
✗	Save and Edit Maps	3

Image: An illustration of the OKP L6 Aqua's advanced 3-in-1 functionality, combining sweeping, vacuuming, and mopping, with adjustable power modes: Silence, Standard, and Super.

## 4.2 Mapping and Navigation

Equipped with advanced dToF LiDAR navigation, the L6 Aqua accurately maps your home, allowing for efficient cleaning paths and multi-floor mapping capabilities. You can define "no-go zones" and "no-mop zones" within the app to restrict the robot from certain areas.



# 360° DToF LiDAR Navigation with 15m Range



Fast and  
accurate mapping



15m scanning  
radius



360° range up to  
700m (7535sqft)



Image: A visual demonstrating the OKP L6 Aqua's 360° dToF LiDAR Navigation with a 15m range, highlighting its fast and accurate mapping, 15m scanning radius, and ability to map up to 700 square meters.

# Advanced 3-in-1 Robot Vacuum Cleaner with Mop

Combined functions of sweeping, vacuum and mopping

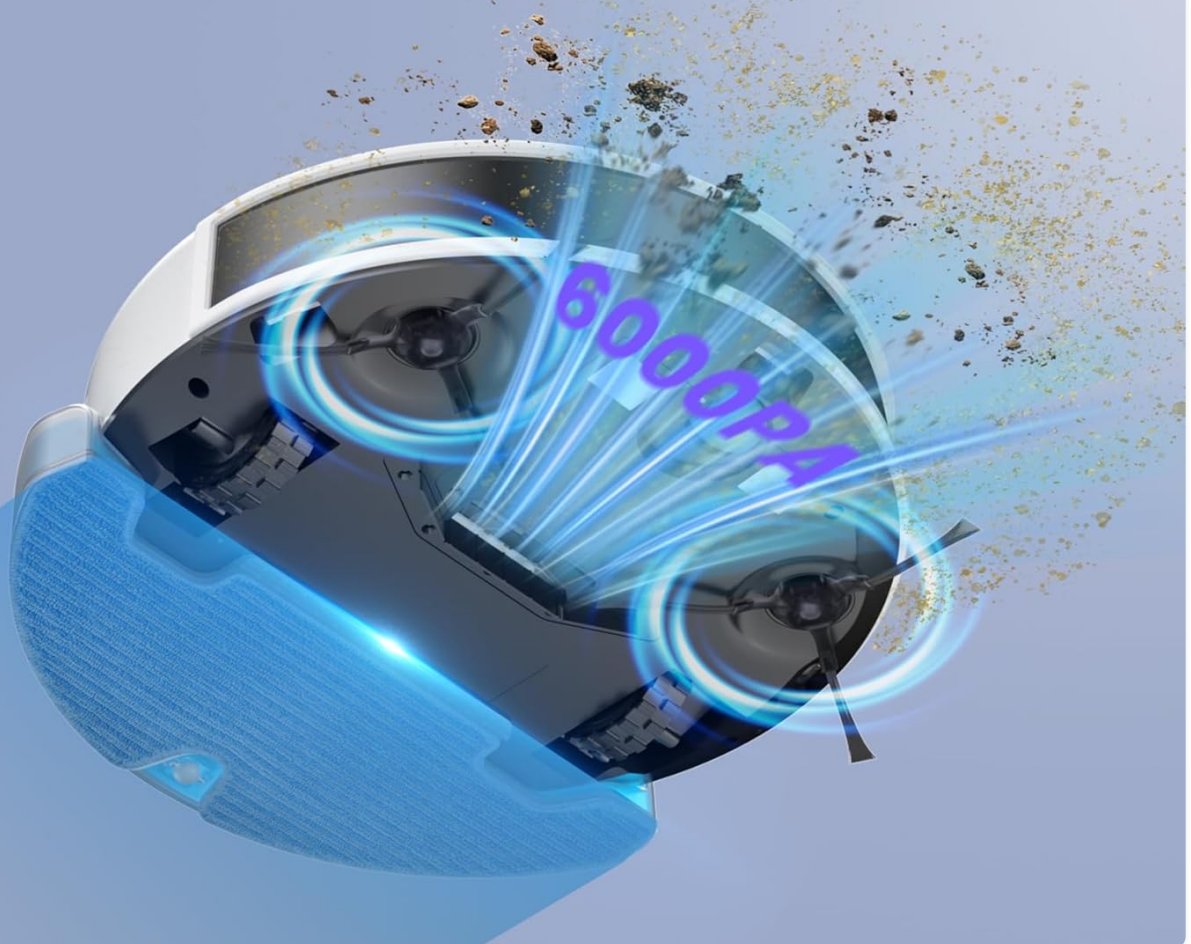


Image: An illustration showing the customizable maps and no-go zones feature of the OKP L6 Aqua, where users can define areas the robot should avoid, such as children's play areas.

## 4.3 Vacuuming and Mopping

The L6 Aqua seamlessly transitions between vacuuming and mopping. Fill the 200ml water tank and attach the washable mop pad for mopping. The robot features carpet detection, automatically boosting suction on carpets for deep cleaning and avoiding carpets in mopping mode to prevent water stains.

## 4.4 Obstacle Avoidance

Equipped with 190° PSD (Position Sensitive Device) obstacle detection and smart sensors, the robot intelligently navigates around furniture, cords, and small obstacles, even in low-light conditions, ensuring a smooth and collision-free cleaning path.



# Precision Sensing, Perfect Dodging

9 sensors for precise obstacle detection.  
190° wide-angle for detecting more obstacles.  
Mini design for greater coverage and access to narrow spaces



Image: A diagram illustrating the OKP L6 Aqua's precision sensing capabilities with 9 sensors and 190° wide-angle detection, allowing it to effectively dodge obstacles like toys and slippers.

## 4.5 Auto-Recharge and Resume

When the battery level is low, the L6 Aqua will automatically return to its charging dock. Once sufficiently recharged (to 80%), it will resume cleaning from where it left off, ensuring complete coverage without manual intervention.

# Customized Cleaning via the App and Voice

Compatible with 2.4GHz Or 2.4GHz 5G  
Dual channel network



Automatic  
Cleaning



Zone  
Cleaning



Spot  
Cleaning



Edge  
Cleaning



Forbidden  
Edit



Scheduled  
Cleaning



Wifi



Amazon Alexa



Google Home

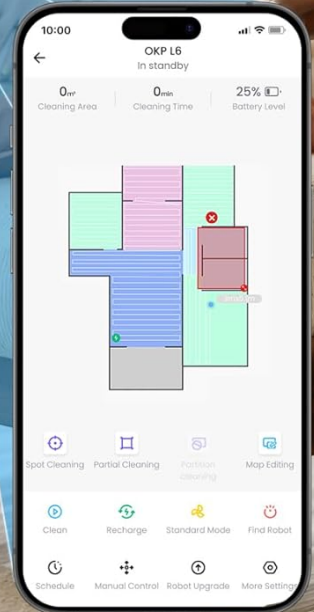


Image: A visual representation of the OKP L6 Aqua's breakpoint technology, showing the robot returning to its dock to recharge when the battery is low (15%) and then resuming cleaning from the exact spot once recharged (80%).

## 5. MAINTENANCE

Regular maintenance ensures optimal performance and extends the lifespan of your OKP L6 Aqua.

### 5.1 Dustbin Emptying

The 450ml visible dustbin allows you to easily see when it needs emptying. Press the dustbin release button, remove the dustbin, and empty its contents into a trash bin. Clean the filter regularly.

### 5.2 Mop Pad Cleaning

After each mopping session, detach the washable mop pad and rinse it thoroughly with water. Allow it to air dry completely before reattaching.

### 5.3 Brush and Sensor Cleaning



Periodically check and clean the side brushes for tangled hair or debris. Use the provided cleaning tool to remove any hair wrapped around the brushes. Wipe the charging contacts and all sensors (cliff sensors, wall sensors) with a clean, dry cloth to ensure proper function.

### 5.4 Anti-Tangle System

The L6 Aqua features an upgraded Zero-Tangle System with a sealed LiDAR turret, brushless suction port, dual high-speed side brushes, straight-through airflow, and a seamless body. This design minimizes hair wrap and prevents dirt traps, making maintenance easier, especially for pet owners.



Image: A comparison illustrating the OKP L6 Aqua's upgraded Zero-Tangle System, showing its clean internal design compared to other robot vacuums that often accumulate hair and debris.

## 6. TROUBLESHOOTING

If your OKP L6 Aqua encounters an issue, refer to the table below for common problems and their solutions.

Problem	Possible Cause	Solution
---------	----------------	----------



Problem	Possible Cause	Solution
Robot does not turn on	Low battery; Power button not pressed	Place on charging dock; Press and hold power button for 3 seconds.
Robot cannot find charging dock	Dock obstructed; Robot too far from dock	Ensure clear space around dock; Manually place robot closer to dock.
Poor cleaning performance	Full dustbin; Clogged filter; Worn brushes	Empty dustbin; Clean/replace filter; Clean/replace brushes.
Robot gets stuck frequently	Obstacles on floor; Dirty sensors	Clear floor of cables/small items; Clean cliff and wall sensors.
Cannot connect to Wi-Fi/App	Incorrect Wi-Fi password; Router too far; 5GHz network selected	Verify password; Move robot closer to router; Ensure 2.4GHz network is used.

## 7. PRODUCT SPECIFICATIONS

Feature	Specification
Brand	OKP
Model Name	L6 Aqua Robot Vacuum and Mop Combo
Navigation Type	LiDAR Navigation (dToF)
Dustbin Capacity	450ml (Visible)
Water Tank Capacity	200ml
Max Runtime	Up to 150 minutes
Coverage Area	Up to 1600 sq.ft.
Connectivity	2.4GHz Wi-Fi, Alexa, Google Assistant
Product Dimensions	12"L x 12"W x 3.5"H
Color	Frost White

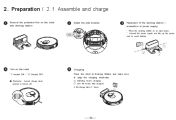
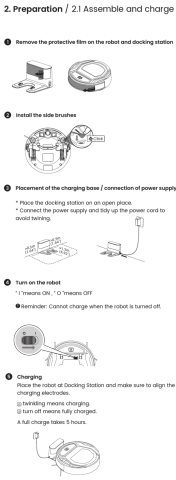

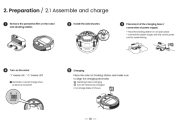
## 8. WARRANTY AND CUSTOMER SUPPORT

OKP provides a one-year warranty for the L6 Aqua Robot Vacuum and Mop Combo. For any questions, issues, or technical support, please contact OKP professional customer service.

**Customer Support:** Available Monday to Friday via the Amazon message center.

Please retain your proof of purchase for warranty claims.

Related Documents - L6 Aqua Robot Vacuum and Mop Combo

	<p><a href="#">OKP L1 Lidar Robot Vacuum Cleaner: Setup, Operation, and Maintenance Guide</a></p> <p>Comprehensive user guide for the OKP L1 Lidar Robot Vacuum Cleaner. Learn how to assemble, charge, connect to the OKP app (2.4GHz Wi-Fi), and perform routine maintenance for your smart robotic vacuum.</p>
 <p>2. Preparation / 2.1 Assemble and charge</p> <p>● Remove the protective film on the robot and docking station</p> <p>● Install the side brushes</p> <p>● Placement of the charging base / connection of power supply</p> <p>* Place the docking station on an open place. * Connect the power supply and tidy up the power cord to avoid tripping.</p> <p>● Turn on the robot</p> <p>* 1: Treacher ON, * 0: Treacher OFF</p> <p>● Reminder: Cannot charge when the robot is turned off.</p> <p>● Charging</p> <p>Place the robot at docking station and make sure to align the charging electrodes. ① Switching means charging. ② Turn off means fully charged. A full charge takes 5 hours.</p> <p>2. Preparation / 2.2 Using environment preparation</p> <p>Tidy up the room</p> <p>⊗ Organize the items on the floor, such as wires, papers and other articles to avoid affecting the operation of the robot.</p> <p>⊗ If the rug or home has fringed edges, please put the edges under the rug to minimize.</p> <p>⊗ Do not let the robot operate on wet floors.</p> <p>⊗ The robot can climb to the top of objects with a height of less than 15mm. If you don't want the robot to climb on them, please take them away.</p>	<p><a href="#">OKP K2P Robot Vacuum Cleaner: User Manual and Setup Guide</a></p> <p>Comprehensive user manual for the OKP K2P Robot Vacuum Cleaner. Learn about assembly, charging, operation, app setup (OKP &amp; Smart Life), and maintenance for your 3000Pa robotic vacuum with 150 minutes runtime.</p>
<p>OKP</p> <p>User manual</p> <p>OKP L1 Robot Vacuum Cleaner</p>	<p><a href="#">OKP L1 Robot Vacuum Cleaner User Manual</a></p> <p>Comprehensive user manual for the OKP L1 Robot Vacuum Cleaner, detailing setup, operation, maintenance, safety precautions, troubleshooting, and technical specifications.</p>
	<p><a href="#">OKP Robot Vacuum Cleaner Quick Start Guide</a></p> <p>A quick start guide for the OKP Robot Vacuum Cleaner, covering assembly, charging, usage, app configuration, and maintenance.</p>
<p>OKP</p> <p>User manual</p> <p>OKP K2 Robot Vacuum Cleaner</p>	<p><a href="#">OKP K2 Robot Vacuum Cleaner User Manual</a></p> <p>This user manual provides comprehensive instructions for the OKP K2 Robot Vacuum Cleaner, covering setup, operation, maintenance, troubleshooting, and technical specifications. Learn how to use the device, connect to the OKP app, and maintain its performance for optimal cleaning.</p>
	<p><a href="#">OKP K2 Robot Vacuum Cleaner User Guide</a></p> <p>Comprehensive guide for the OKP K2 Robot Vacuum Cleaner, covering assembly, charging, operation, app connectivity, and maintenance. Learn how to set up and use your robotic vacuum for efficient cleaning.</p>

