

Manuals+

[Q & A](#) | [Deep Search](#) | [Upload](#)

Manuals.plus /

› [BoxLegend](#) /

› BoxLegend Trail Camera WiFi 4K 48MP User Manual T680W

BoxLegend T680W

BoxLegend Trail Camera WiFi 4K 48MP User Manual (Model T680W)

1. INTRODUCTION

This manual provides detailed instructions for the setup, operation, maintenance, and troubleshooting of your BoxLegend Trail Camera WiFi 4K 48MP, Model T680W. This camera is designed for outdoor use, capturing high-resolution images and videos of wildlife or for security monitoring.

Key features include 4K video recording, 48MP still image capture, motion activation with a 0.2-second trigger speed, 85ft night vision range, a 120-degree wide-angle lens, and IP65 waterproof construction. The camera supports Wi-Fi connectivity for app control and file management.

2. WHAT'S IN THE BOX

Please verify that all components are present upon opening the package:

- Trail Camera (Model T680W)
- Mounting Screw & Stand & Mounting Belt
- Charging Cable (USB)
- Instruction Manual
- 64 GB Micro SD Card

Mode Switch Introduction

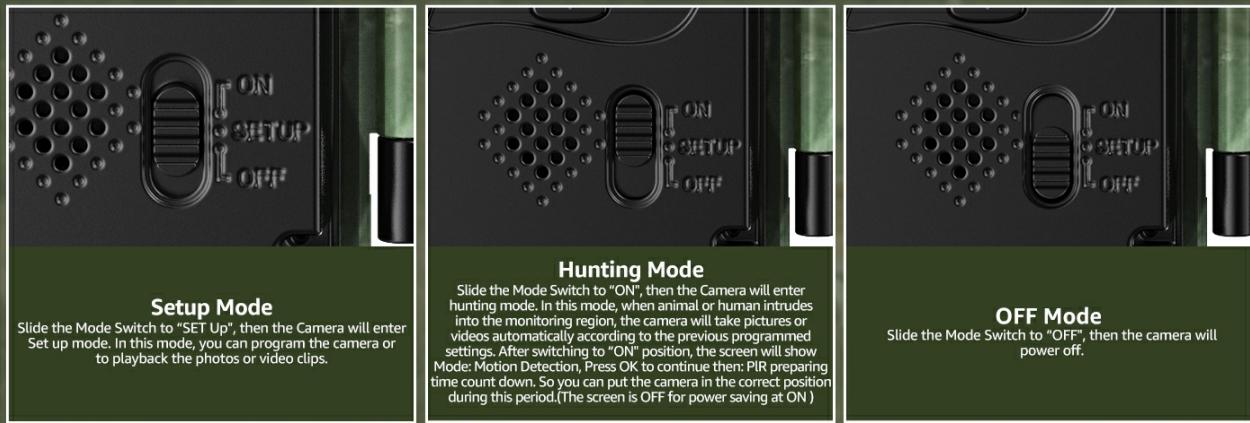


Image: Diagram showing all included components of the BoxLegend Trail Camera package.

3. SETUP GUIDE

3.1. Battery Installation

The camera requires 4 or 8 AA batteries (not included). Ensure batteries are inserted with correct polarity.

3.2. SD Card Installation

Insert the included 64GB Micro SD card into the designated slot. The camera supports up to 256GB Micro SD cards. For first-time use or after extended periods, it is recommended to format the SD card via the camera's settings menu.

If your trail camera isn't taking photos or videos

Switch camera to "ON" mode

"SETUP" mode is only for settings and preview. Motion detection works only in "ON" mode.

Disconnect from the app

The camera won't detect motion while connected to TrailCam Go APP. Exit the app for normal operation.

Test the motion sensor

Go to camera Settings > Motion Test. The number will increase if the motions sensor detected something.

Image: Visual guide for battery and SD card installation, and initial setup steps.

3.3. Mounting the Camera

Use the provided mounting belt or screw stand to secure the camera to a tree or other stable surface. Position the camera to cover the desired monitoring area, ensuring it is stable and not prone to movement from wind.

3.4. App Installation and Connection

Download the 'TrialCam Go' app from your device's app store (available for iOS and Android). This app facilitates camera settings adjustment, live viewing, and file download.

1. Slide the camera's mode switch to the 'ON' position.
2. Enable Bluetooth on your mobile phone and open the 'TrialCam Go' app.
3. In the app, add a new device. The camera should be within 230ft (unobstructed) for connection.
4. Select 'Wi-Fi Camera' from the device type options.
5. Connect to the camera's local Wi-Fi network as prompted by the app. (Note: This camera is not compatible with home Wi-Fi networks; it creates its own local Wi-Fi hotspot for direct connection to your phone.)
6. Once connected, you can adjust camera parameters and access the gallery.



Image: Visual steps for connecting the camera to the mobile application.

4. OPERATING INSTRUCTIONS

4.1. Mode Switch Introduction

The camera features a three-position mode switch:

- **OFF Mode:** Powers off the camera.
- **SETUP Mode:** Allows access to the camera's menu for configuring settings, reviewing captured media, and testing functions. Motion detection is inactive in this mode.
- **ON (Hunting) Mode:** Activates the camera for automatic photo and video capture based on motion detection and programmed settings. The screen will turn off after a short period to conserve power.

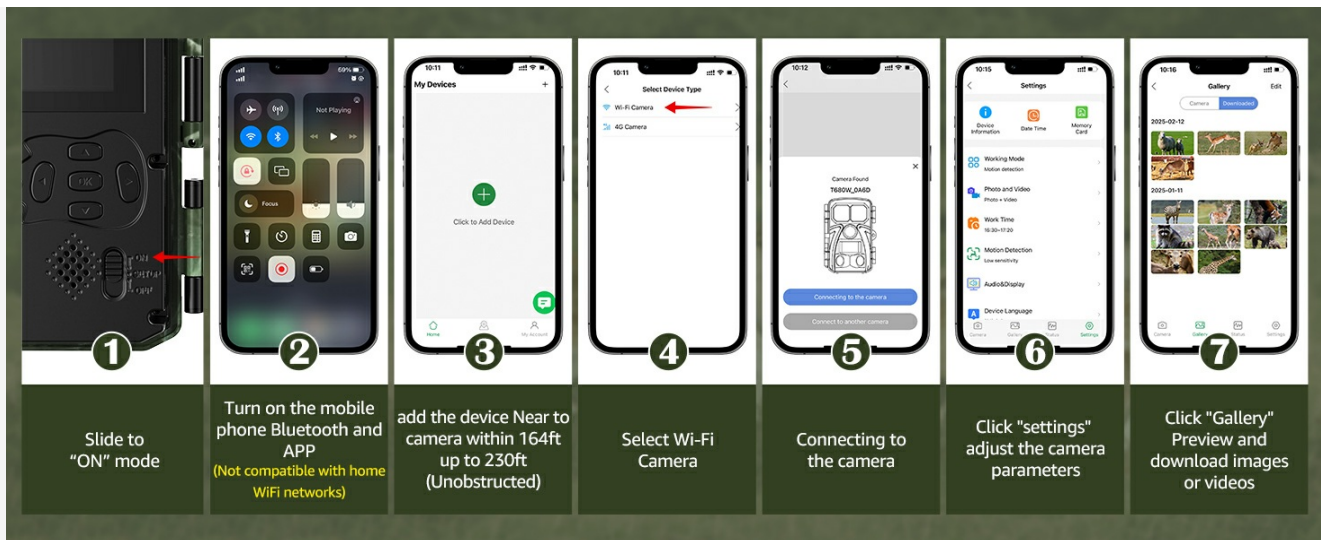


Image: Explanation of camera mode switch positions.

4.2. Camera Settings

Settings such as capture mode (photo, video, or both), resolution, trigger interval, time-lapse, audio recording, and password protection can be configured through the 'TrialCam Go' app or directly on the camera in SETUP mode.

4.3. Photo and Video Capture

The camera captures 48MP still images and 4K video. It features a 0.2-second trigger speed to minimize missed events and 85ft night vision for clear recordings in low-light conditions.



Image: Visual representation of 48MP image and 4K video quality.



Image: Demonstration of the camera's night vision capabilities.

4.4. Scheduled Recording (Work Time)

You can set specific time periods for the camera to be active. This feature is useful for monitoring activity during certain hours.

1. Slide the Mode Switch to 'SET UP'.
2. Press 'MENU' and select 'Work Time'.
3. Select 'On' to activate timing.
4. Set your desired schedule duration (start and end times).
5. Slide the Mode Switch to 'On' to activate the scheduled recording.

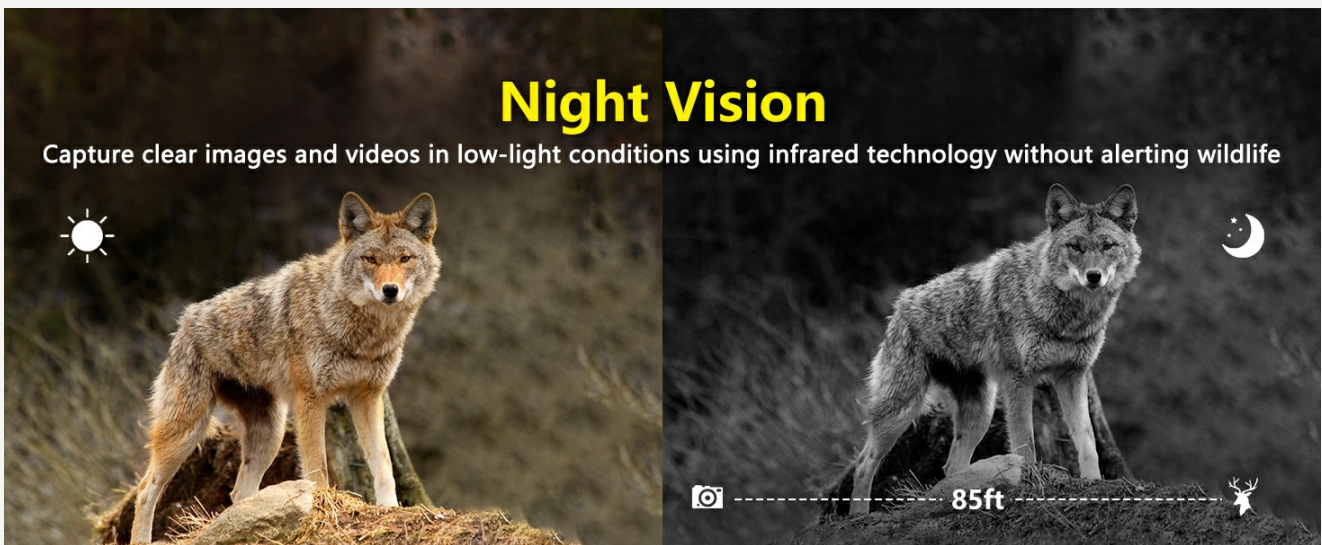


Image: Guide for setting up the camera's work time schedule.

4.5. Viewing Captured Files

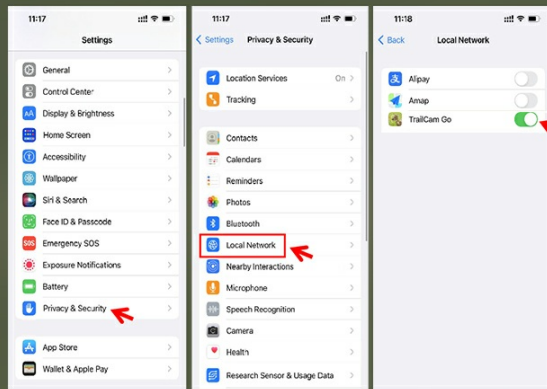
There are three primary methods to access and view your captured photos and videos:

- **Wireless Connectivity (App):** Transfer photos and videos directly to your smartphone using the 'TrialCam Go' app.
- **SD Card Access:** Remove the SD card from your camera and insert it into a card reader for direct file access on a computer.
- **USB Cable Transfer:** Connect the camera to a computer using the included Type-C USB cable to transfer

files.

An iPhone user

Please check the local network permission on your iPhone's [Setting menu]



If the phone still can't connect to the camera even when close to it

An Android user

1. Disable the mobile network of your smartphone and try again

2. If there is a firewall, please disable it

3. Is your phone connected to other Bluetooth devices?

For example: headphones/sports bracelets/printers, etc. Please try to disconnect and then connect the camera

4. Reboot your smartphone and try again.

We noticed that some smartphone's Bluetooth may crash after long time using.

Image: Overview of file access methods.

5. MAINTENANCE

5.1. Cleaning

Wipe the camera's exterior with a soft, damp cloth. Ensure the lens and sensors are clean and free of dirt or debris for optimal performance. Do not use abrasive cleaners or solvents.

5.2. Battery Care

Replace batteries when the power indicator is low. Remove batteries if the camera will not be used for an extended period to prevent leakage. Use high-quality alkaline or rechargeable AA batteries.

5.3. Storage

Store the camera in a cool, dry place away from direct sunlight and extreme temperatures when not in use.

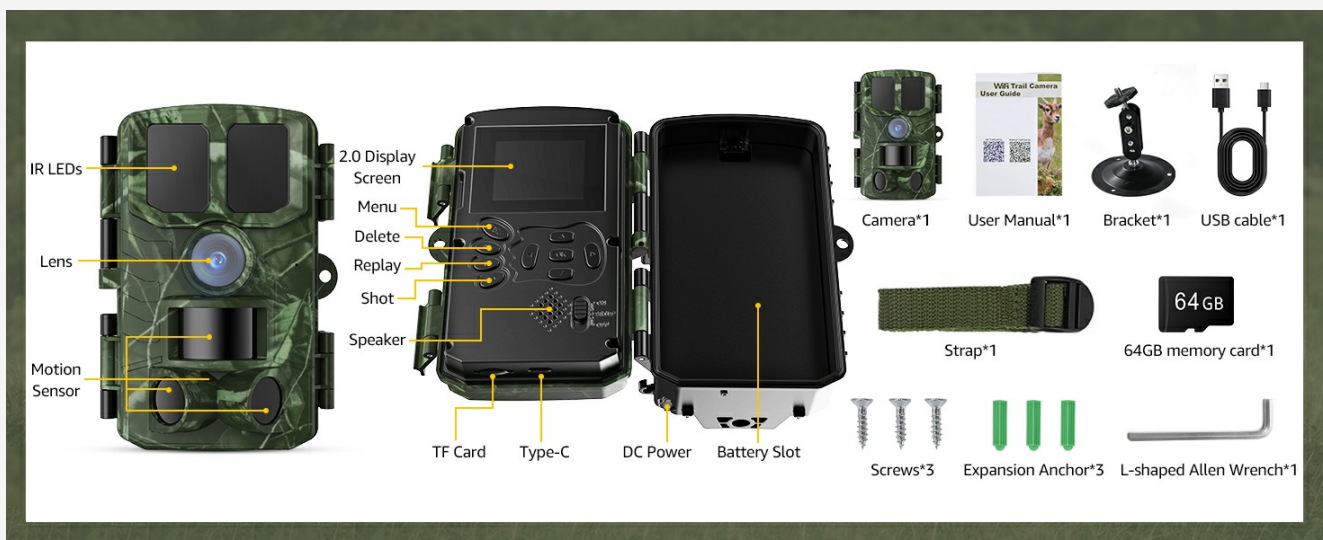


Image: The camera's IP65 waterproof design protects it from outdoor elements.

6. TROUBLESHOOTING

6.1. Camera Not Taking Photos or Videos

- **Switch to 'ON' Mode:** Ensure the camera's mode switch is in the 'ON' position. Motion detection only functions in 'ON' mode; 'SETUP' mode is for configuration and preview.
- **Disconnect from App:** If connected to the 'TrialCam Go' app, disconnect from it. The camera will not detect motion while actively connected to the app. Exit the app for normal operation.
- **Test Motion Sensor:** In 'SETUP' mode, navigate to Camera Settings > Motion Test. The number displayed should increase if the motion sensor detects movement.
- **Check SD Card:** Ensure the SD card is properly inserted and has sufficient free space. Format the SD card if necessary.



Image: Common reasons and solutions for the camera not capturing media.

6.2. Cannot Connect to the Camera via App

- **Proximity:** Ensure your phone is within the camera's Wi-Fi range (up to 230ft unobstructed).
- **Bluetooth/Wi-Fi Status:** For iPhone users, check local network permissions for the 'TrialCam Go' app in your phone's settings. For Android users, disable your mobile network and try again.
- **Firewall:** If a firewall is active on your phone, temporarily disable it.
- **Other Bluetooth Devices:** Disconnect your phone from other Bluetooth devices (e.g., headphones, smartwatches) that might interfere with the connection.
- **Reboot:** Reboot your smartphone and try connecting again.



Image: Solutions for app connectivity problems.

6.3. Short Battery Life

- **Battery Quality:** Use fresh, high-quality alkaline or rechargeable batteries.
- **Settings:** Frequent video recording, especially at night, consumes more power. Adjust settings to optimize battery life (e.g., shorter video clips, longer trigger intervals).
- **Environmental Factors:** Cold temperatures can significantly reduce battery performance.

7. SPECIFICATIONS

Model Name	T680W
Effective Still Resolution	48 MP
Video Capture Resolution	4K
Video Capture Format	AVI
Trigger Speed	0.2 seconds
Night Vision Range	85 Feet
Viewing Angle	120 Degrees
Connectivity Technology	Wireless (Wi-Fi, Bluetooth for app connection)
Power Source	Battery Powered (4AA/8AA, not included)
Water Resistance Level	IP65 Waterproof
Flash Memory Installed Size	64 GB (included)
Flash Memory Supported Size Maximum	256 GB
Item Dimensions (L x W x H)	3.74 x 3.23 x 5.55 inches
Item Weight	1.26 pounds

Material	Acrylonitrile Butadiene Styrene (ABS)
Recommended Uses	Game & Trail, Outdoor Security, Pet Monitoring

8. WARRANTY AND SUPPORT

For warranty information or technical support, please refer to the official BoxLegend website or contact their customer service directly. Details can typically be found on the product packaging or the brand's online store.

Visit the [BoxLegend Store](#) for additional product information and support resources.