



[Manuals.plus](#) /

› [FLEXISPOT](#) /

› FLEXISPOT OC8 Ergonomic Office Chair User Manual

FLEXISPOT OC8

FLEXISPOT OC8 Ergonomic Office Chair User Manual

Model: OC8

INTRODUCTION

Thank you for choosing the FLEXISPOT OC8 Ergonomic Office Chair. This manual provides detailed instructions for the assembly, operation, and maintenance of your new chair. Designed for comfort and support during long hours of work or study, the OC8 features advanced ergonomic adjustments to suit individual preferences. Please read this manual carefully before assembly and use to ensure proper function and longevity of your product.



Image: The FLEXISPOT OC8 Ergonomic Office Chair in black, showcasing its mesh back, adjustable headrest, and armrests.

SAFETY INFORMATION

- Ensure all components are securely fastened before use.
- Do not stand on the chair or use it as a step stool.
- Avoid placing heavy objects on the chair that exceed its weight capacity (136 kg / 300 lbs).
- Keep children and pets away from the chair during assembly.
- Use the chair on a flat, stable surface to prevent tipping.
- Regularly check for loose screws or damaged parts and tighten or replace as necessary.

PACKAGE CONTENTS

Please verify that all parts are present before beginning assembly. Refer to the assembly guide included in your product packaging for a detailed list and diagrams. Typically, your package should include:

- Backrest assembly
- Seat cushion assembly
- Headrest
- Armrests (2)
- Gas lift cylinder
- Chair base with casters
- Hardware kit (screws, washers, Allen wrench)

SETUP AND ASSEMBLY

Assembly of the FLEXISPOT OC8 chair is straightforward. For detailed, step-by-step instructions and diagrams, please consult the dedicated assembly manual provided in the product packaging. Below are general steps and important dimensions:

1. Attach the casters to the chair base.
2. Insert the gas lift cylinder into the center hole of the chair base.
3. Secure the armrests to the seat cushion using the provided hardware.
4. Attach the backrest to the seat cushion assembly.
5. Mount the headrest to the top of the backrest.
6. Place the assembled seat and backrest onto the gas lift cylinder.



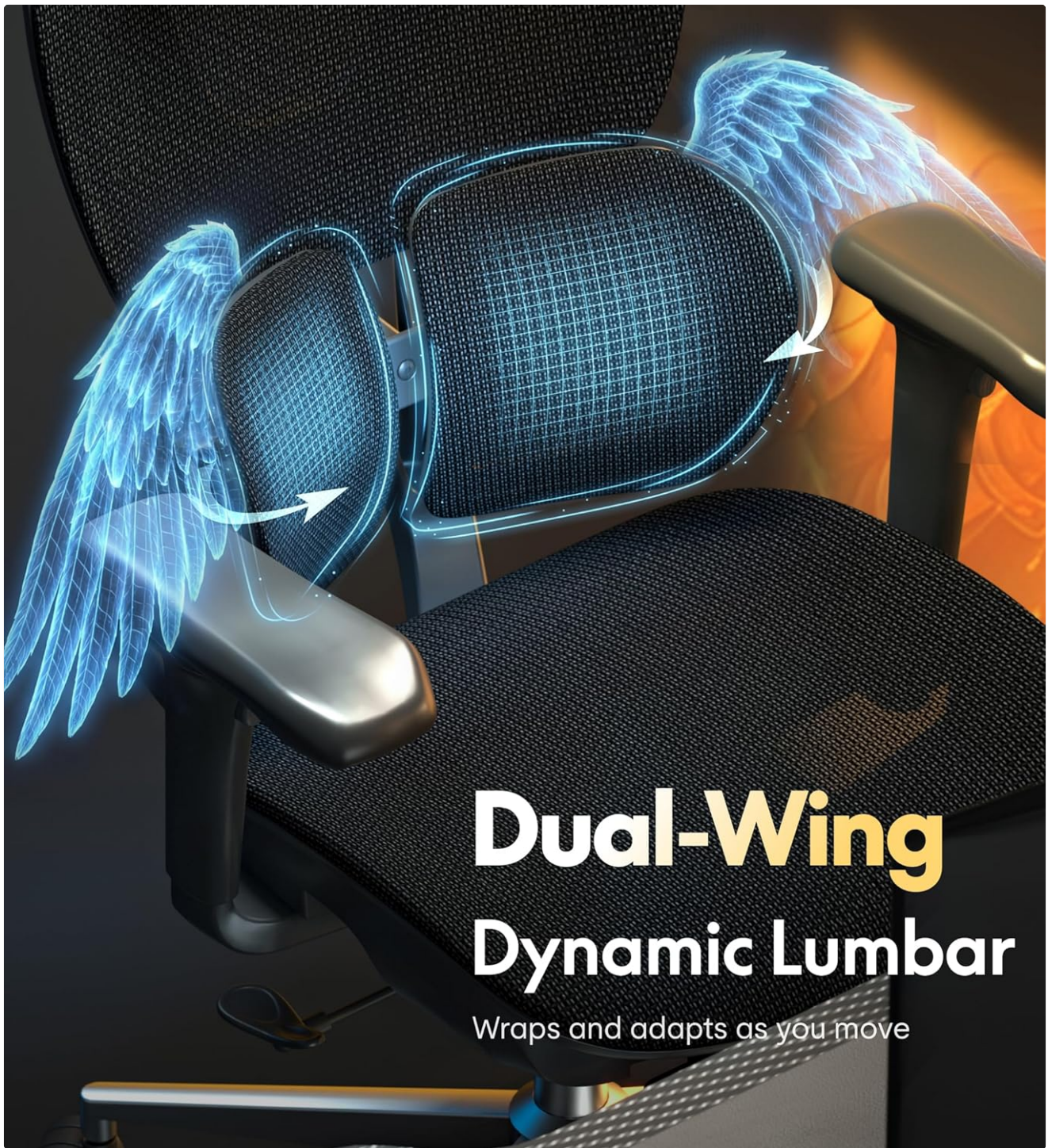
Image: A diagram illustrating the dimensions of the FLEXISPOT OC8 chair, including height, width, and depth measurements for various components.

OPERATING INSTRUCTIONS: ADJUSTMENTS

The FLEXISPOT OC8 chair offers multiple adjustment options to customize your seating experience for optimal ergonomic support.

1. Dual-Wing Dynamic Lumbar Support

The dual-wing lumbar support system provides adaptive support that conforms to your spine's natural curvature. It adjusts in multiple directions (forward, backward, up, down) and at different angles to provide continuous comfort, especially during prolonged sitting.



Dual-Wing Dynamic Lumbar

Wraps and adapts as you move

Image: A close-up view of the chair's dual-wing dynamic lumbar support, highlighting its flexible design.



Image: An illustrative diagram demonstrating how the adaptive lumbar support can be opened and closed for adjustment.

2. 3D Ergonomic Headrest

The 3D headrest allows for precise adjustments in height, forward/backward tilt, and angle. This personalized support helps alleviate neck and shoulder tension, particularly beneficial during long video calls or intensive work sessions.



3D

Ergonomic Headrest

Moves with you, supports naturally

Image: A user demonstrating the adjustment of the 3D ergonomic headrest, with diagrams showing various tilt and height options.

Soporte de cabeza y reposabrazos 3D

Ajustes multidireccionales integrados para un soporte dinámico

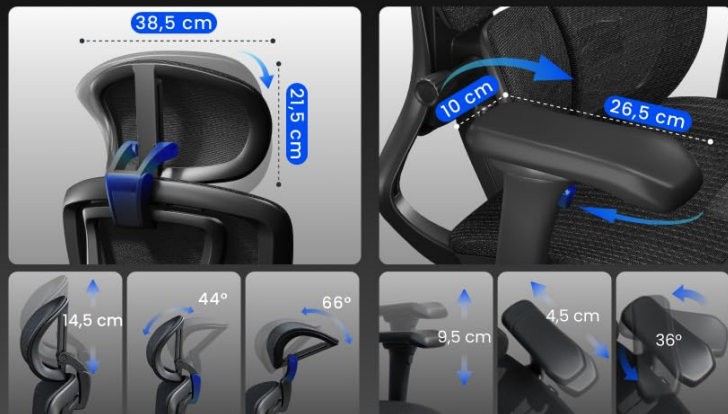


Image: A technical diagram illustrating the multi-position adjustment and mechanical components of the headrest.

3. Adjustable Seat Depth

Individually adjustable seat depth provides enhanced thigh support, reduces pressure points, and promotes a healthy posture. This feature is ideal for users requiring comfort during extended periods of concentration.



Image: A diagram illustrating the 3-level height adjustment range and the mechanism for adjusting seat depth.

4. 3D Adjustable Armrests

The 3D armrests can be adjusted in height, depth, and lateral rotation, adapting to various postures. They offer greater freedom of movement and keep your arms relaxed whether typing, using a mouse, or during video calls.

3D Adjustable Armrest

Moving flexibly for pleasing arm support

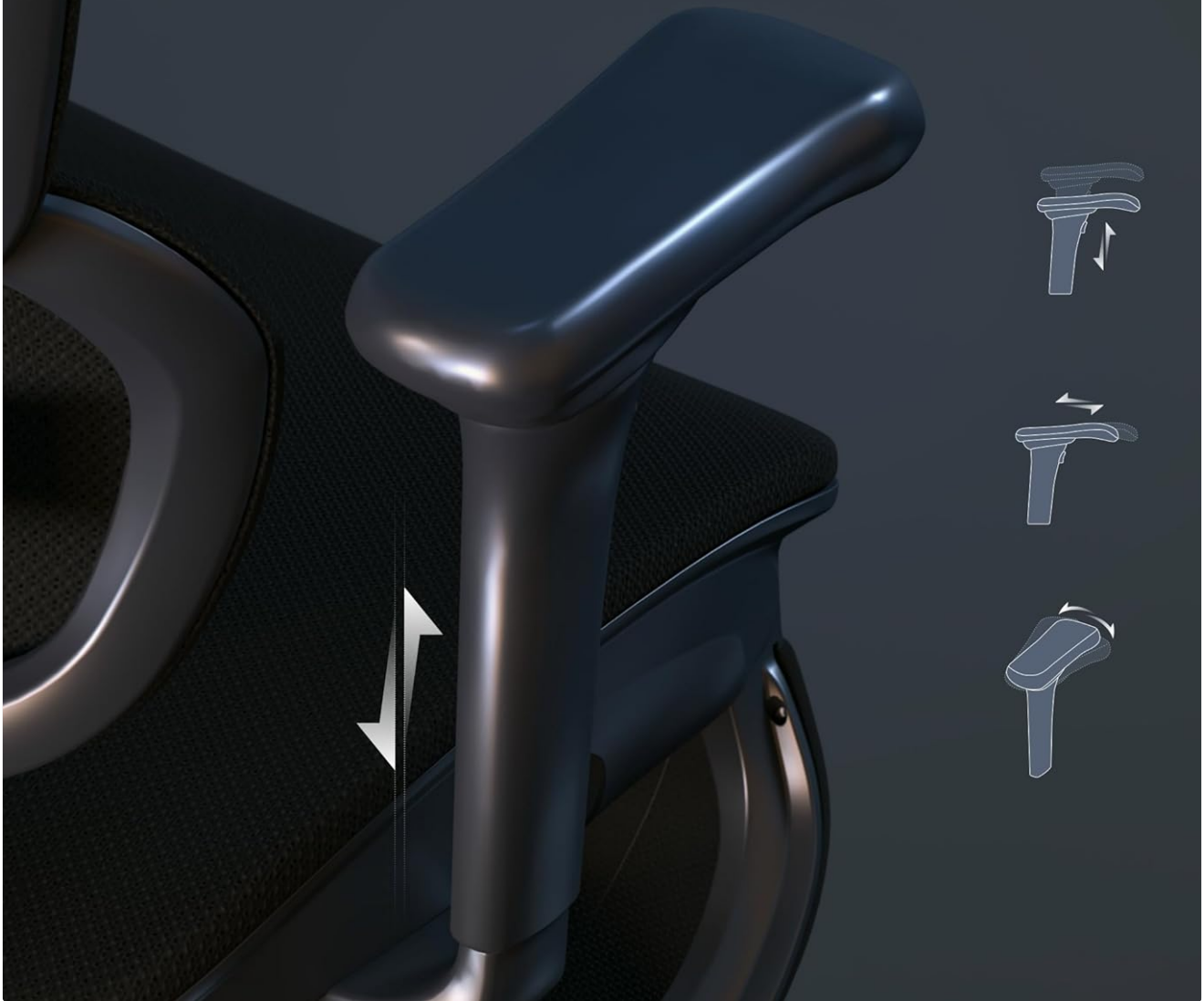


Image: A close-up view of the 3D adjustable armrest, with diagrams showing its various movement capabilities.



Image: A diagram illustrating the multidirectional adjustments for both the headrest and the 3D armrests.

5. 3-Level Dynamic Backrest and Recline

The backrest features a 3-level dynamic adjustment for precise lift and support. The chair also offers a recline function for resting, with a tension regulator to adapt to different pressure preferences and a tilt lock lever to secure your desired recline

angle.



Image: A side view of the chair highlighting the 3-level dynamic backrest, indicating its precision lift capability.

Inclinación para el descanso

El regulador de tensión ayuda a adaptarse a diferentes preferencias de presión



Image: A diagram illustrating the chair's recline function, showing the adjustable tension button and the tilt lock lever.

MAINTENANCE

Proper maintenance ensures the longevity and optimal performance of your FLEXISPOT OC8 chair.

- **Cleaning:** Use a soft, damp cloth with mild soap to clean the mesh and leather surfaces. Avoid harsh chemicals or abrasive cleaners. For the mesh, a vacuum cleaner with a brush attachment can remove dust.
- **Casters:** Periodically check the casters for hair or debris that may hinder smooth movement. Clean them as needed. The chair features smooth, silent, and anti-scratch wheels suitable for various floor types.
- **Hardware:** Every few months, inspect all screws and bolts to ensure they are tight. Re-tighten any loose hardware to maintain stability and safety.
- **General Inspection:** Check for any signs of wear and tear, especially on moving parts and upholstery. Contact customer support if you notice any significant damage.



Image: Illustrates the breathable mesh seat for heat dissipation and the smooth, silent, anti-scratch properties of the chair's wheels.

TROUBLESHOOTING

If you encounter any issues with your FLEXISPOT OC8 chair, refer to the common problems and solutions below:

Problem	Possible Cause	Solution
Chair does not adjust height	Gas lift cylinder malfunction or lever not engaged.	Ensure the height adjustment lever is fully engaged. If the issue persists, the gas lift may need replacement.
Chair wobbles	Loose screws or uneven floor.	Check and tighten all assembly screws. Ensure the chair is on a flat surface.
Casters not rolling smoothly	Debris caught in casters or damaged casters.	Remove any hair or debris from the caster wheels. If damaged, replace the casters.
Backrest does not recline or lock	Recline mechanism locked or tension too high.	Ensure the tilt lock lever is disengaged. Adjust the recline tension knob to a lower setting.

SPECIFICATIONS

Key specifications for the FLEXISPOT OC8 Ergonomic Office Chair:

Feature	Detail
Brand	FLEXISPOT
Model	OC8
Color	Black
Material	Leather (seat), Mesh (backrest)
Product Dimensions (D x W x H)	74.5 x 72 x 111.5 cm (29.3 x 28.3 x 43.9 inches)
Frame Material	Alloy Steel
Backrest Style	Solid Backrest
Reclining Positions	3
Weight Capacity	Up to 136 kg (300 lbs)
Assembly Required	No (referring to the 'Requiere montaje: No' specification, which might mean minimal assembly or pre-assembled main parts)
Age Range Description	Adult
Indoor/Outdoor Use	Indoor

WARRANTY AND SUPPORT

FLEXISPOT is committed to providing high-quality products designed for durability. The FLEXISPOT OC8 chair comes with an official brand warranty. For specific warranty terms and duration, please refer to the warranty card included with your product or visit the official FLEXISPOT website.

Should you require any assistance, our professional and responsive after-sales service team is available to help. Please contact FLEXISPOT customer support for any questions, concerns, or service requests related to your chair.

For further information or support, please visit the [FLEXISPOT Brand Store](#).