

LEKATO CPD-2849US1

LEKATO CPD-1000 Electronic Drum Set Instruction Manual

Model: CPD-2849US1

1. INTRODUCTION

Thank you for choosing the LEKATO CPD-1000 Electronic Drum Set. This portable electric drum set is designed to provide an authentic drumming experience with quiet mesh pads and a wide range of sounds. This manual will guide you through the setup, operation, and maintenance of your new instrument.

The CPD-1000 features a double-layer mesh snare for realistic rebound, three silicone toms, and three silicone cymbals for responsive play. It includes over 220 drum sounds, 10 preset kits, and 5 customizable kits. Connectivity options include AUX input for external audio, USB-MIDI for computer integration, and robust footswitch pedals for dynamic control.

2. PACKAGE CONTENTS

Before assembly, please verify that all components are present:

- Main Pad (1x)
- Cymbal (3x)
- Adapter (1x)
- Pedal (2x)
- Wiring Harness (1x)
- Shoulder Bag (1x)
- Drum Key and Screws
- Drum Sticks
- User Manual

LEKATO Travel Drum Set

Best balance between portability and professionalism



Figure 2.1: All components of the LEKATO CPD-1000 Electronic Drum Set.

3. SETUP

3.1 Assembly

The LEKATO CPD-1000 is designed for easy assembly and portability. It can be set up on a 14-inch snare drum stand or a tabletop.

1. Place the main pad unit on a stable surface or a compatible drum stand.
2. Attach the cymbal triggers to their designated positions on the main unit using the provided hardware. Adjust

their height and angle for comfortable playing.

3. Connect the footswitch pedals to the main unit. Ensure they are placed on a stable surface to prevent movement during play.
4. Connect the wiring harness to the main pad unit and then to each individual pad (snare, toms, cymbals) and pedals. Ensure all connections are secure.



Figure 3.1: Fully assembled LEKATO CPD-1000 Electronic Drum Set.



Figure 3.2: Adjusting the height and angle of a cymbal pad.

3.2 Power Connection

Connect the provided power adapter to the DC 9V input on the drum module and plug it into a standard electrical outlet.

3.3 Audio Connections

- **Headphone Output:** Connect headphones to the 3.5mm PHONE OUT jack for private practice.
- **Line Output:** Connect to an amplifier or mixing console using the 6.35mm OUTPUT jack.
- **AUX Input:** Connect an external audio device (e.g., smartphone, MP3 player) to the 3.5mm AUX IN jack to play along with your favorite music.



Expansion Interfaces

Connect the music player with your preferred music library. Use a USB MIDI connection for DSW in PC environments, as well as for VST compatibility and recording purposes.

Figure 3.3: Audio and power connection ports on the drum module.

3.4 USB MIDI Connection

Connect the drum module to a computer using a USB cable for MIDI functionality. This allows for recording into Digital Audio Workstations (DAW) or controlling virtual instruments.



Expansion Interfaces

Connect the music player with your preferred music library. Use a USB MIDI connection for DSW in PC environments, as well as for VST compatibility and recording purposes.

Figure 3.4: USB MIDI port for computer connectivity.

3.5 Assembly Video Guide

For a visual guide on the assembly process, please refer to the following video:

4. OPERATING INSTRUCTIONS

4.1 Power On/Off

Press the **POWER** button on the drum module to turn the unit on or off.

4.2 Sound Selection and Drum Kits

The CPD-1000 offers over 220 drum sounds and 10 preset drum kits. You can also create and save up to 5 freely combinable drum kits.

- Press the **KIT** button to cycle through the preset drum kits.
- Use the **+/-** buttons to adjust parameters or select different sounds within a kit.

220+ In-Demand Sounds

10



Preset Drum Kits

5



Free-assembly Kits

30



Demo Songs



Figure 4.1: Drum module interface for sound and kit selection.

4.3 Playing the Pads

All pads on the CPD-1000 are touch-sensitive, including the snare, hi-hat, crash, ride, and tom pads (Tom1, Tom2, Tom3). The sound produced will vary based on the force and speed of your strike, providing a dynamic playing experience.

Touch Sensitive Drums

Comfortable rebound feeling and extremely dynamic, including Hi-Hat, Crash, Ride, Tom1-3 and Snare



Silicone
Pad



Strength
Feedback



Highly Sensitive
Sensors

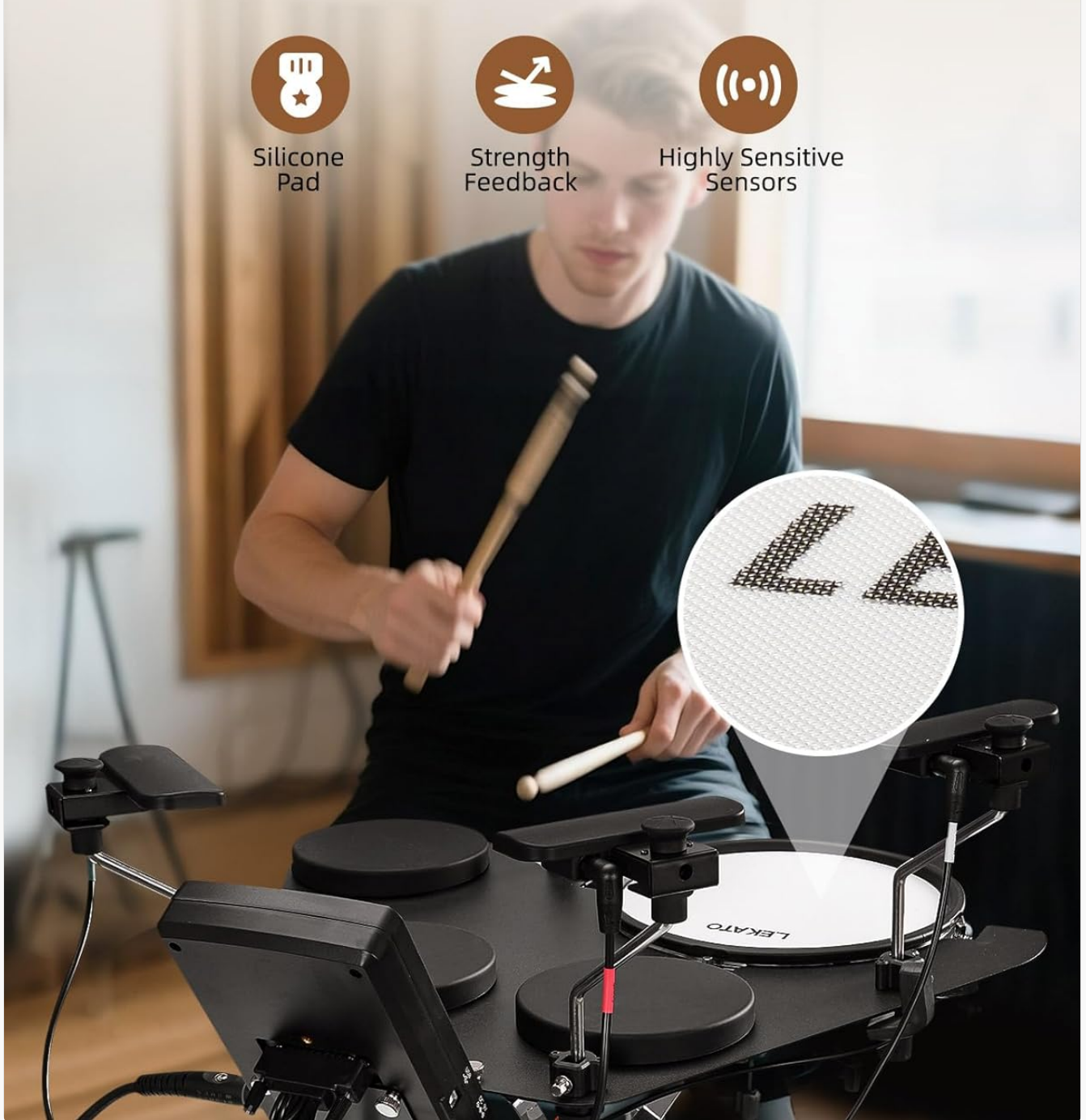


Figure 4.2: Demonstrating touch-sensitive drum pads.

The robust footswitch pedals are designed to eliminate crosstalk and support dynamic input, ensuring clean and responsive kick and hi-hat control.



Figure 4.3: Robust footswitch pedal for kick drum control.

4.4 Practice Features

- **Demo Songs:** The module includes 30 demo songs for practice and inspiration. Use the **SONG** button to select and play demo tracks.
- **Metronome:** Activate the built-in metronome using the **CLICK** button to improve timing and accuracy. Adjust the tempo with the **TEMPO** button.
- **Coach Mode:** Engage **COACH** mode for guided practice exercises, helping beginners develop fundamental drumming skills.
- **Recording:** Use the **RECORD** function to capture your drumming sessions for review and progress tracking.

Coach Mode for Beginners

Practice types for snare or drums, choose a beat and rhythm to start your practice, with score mode



Built-in
Metronome/Click



Support
Record Play

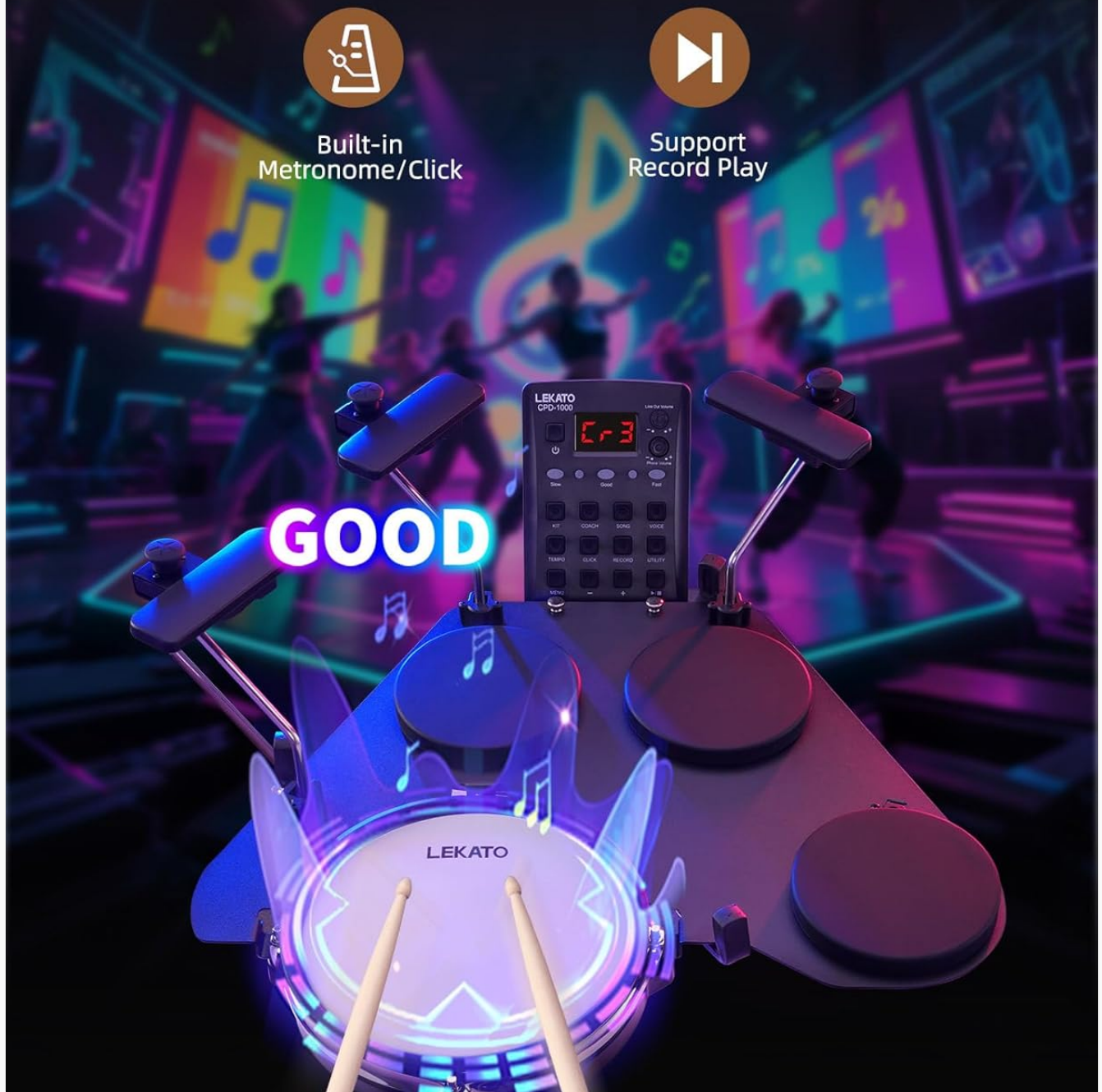


Figure 4.4: Coach Mode interface for guided practice.

4.5 Advanced Pad Settings

The drum module allows for fine-tuning of individual pad parameters to customize your playing experience. Access these settings via the **UTILITY** button and navigate using the **+/-** buttons.

- **Threshold:** Adjusts the minimum force required to trigger a sound.
- **Sensitivity:** Controls how responsive the pad is to different playing dynamics.
- **Crosstalk:** Minimizes unwanted triggering of adjacent pads.
- **Curve:** Modifies the velocity response curve of the pad.

- **Retrig-Cancel:** Helps prevent double-triggering.
- **Rim-Adjust:** Adjusts the sensitivity of rim shots on the snare pad.

Advanced Settings of Pads

Freely set or adjust parameters for each pad, including Threshold, Sensitivity, Crosstalk, Curve, Retrig-Cancel



Figure 4.5: Advanced settings for customizing pad response.

5. MAINTENANCE

5.1 Cleaning

To maintain the longevity and performance of your drum set:

- Wipe down the pads and module with a soft, dry cloth after each use.
- For stubborn dirt, use a slightly damp cloth and then dry thoroughly.
- Avoid using abrasive cleaners, solvents, or waxes, as these can damage the surfaces.

5.2 Storage

When not in use, store the drum set in a cool, dry place away from direct sunlight and extreme temperatures. The drum set is designed for portability, with removable stands and a travel bag for convenient storage and transport.

Portable Size

Support for a 14-inch snare drum stand



Figure 5.1: The LEKATO CPD-1000 packed for travel in its bag.

6. TROUBLESHOOTING

If you encounter any issues with your LEKATO CPD-1000, please refer to the following common solutions:

- **No Sound:**
 - Ensure the power adapter is securely connected and the unit is powered on.
 - Check headphone or speaker connections and their volume levels.
 - Verify that the main volume on the drum module is turned up.
 - Confirm all pad cables are correctly plugged into the module.
- **Pads Not Responding or Double Triggering:**
 - Check the cable connection for the affected pad.
 - Adjust the pad's **Threshold**, **Sensitivity**, **Crosstalk**, and **Retrig-Cancel** settings in the Utility menu (refer to Section 4.5).
 - Ensure drumsticks are not damaged or excessively worn.
- **Footswitch Issues (Kick/Hi-Hat):**
 - Ensure the footswitch cables are securely connected.
 - Check for any obstructions preventing full depression of the pedal.
 - Adjust the sensitivity settings for the kick and hi-hat pedals in the Utility menu.
- **MIDI Connectivity Problems:**
 - Verify the USB cable is properly connected to both the module and the computer.
 - Ensure the correct MIDI drivers are installed on your computer (if required).
 - Check MIDI input settings within your DAW or software.

If the issue persists, please contact LEKATO customer support for further assistance.

7. SPECIFICATIONS

Feature	Specification
Model Name	CPD-2849US1
Body Material	Plastic
Pad Material	Mesh, Silicone, Metal
Dimensions (L x W x H)	19.69 x 5.71 x 19.69 inches
Item Weight	13.86 pounds (6.3 Kilograms)
Sounds	220+ Drum Sounds
Drum Kits	10 Preset, 5 User-Combinable
Practice Features	30 Demo Songs, Metronome, Coach Mode, Record Function
Connectivity	USB MIDI, 3.5mm AUX Input, 3.5mm Phone Output, 6.35mm Output
Pedals	2 Robust Footswitch Pedals (Kick, Hi-Hat)

8. WARRANTY AND SUPPORT

For information regarding product warranty, please refer to the warranty card included in your package or visit the official LEKATO website. Keep your proof of purchase for warranty claims.

If you require technical assistance, have questions about your product, or need to report an issue, please contact LEKATO customer support through their official channels. Contact details can typically be found on the product packaging or the LEKATO brand website.