

## Manuals+

[Q & A](#) | [Deep Search](#) | [Upload](#)

[manuals.plus](#) /

› [Atopskins](#) /

› [Atopskins 6-in-1 Hot Air Styler User Manual](#)

## Atopskins B0FDGLXMV9

# Atopskins 6-in-1 Hot Air Styler User Manual

Model: B0FDGLXMV9

## INTRODUCTION

Thank you for choosing the Atopskins 6-in-1 Hot Air Styler. This versatile hair tool combines the functions of a hair dryer, auto curler, straightener, volumizing brush, and round brush, designed to provide efficient and gentle hair styling. Please read this manual thoroughly before use to ensure safe and optimal performance.

## IMPORTANT SAFETY INSTRUCTIONS

When using electrical appliances, especially when children are present, basic safety precautions should always be followed, including the following:

- **DANGER:** Keep away from water. Do not use while bathing or in a shower.
- Always unplug the appliance immediately after use.
- Do not place or store appliance where it can fall or be pulled into a tub or sink.
- Do not place in or drop into water or other liquid.
- If an appliance falls into water, unplug it immediately. Do not reach into the water.
- **WARNING:** To reduce the risk of burns, electrocution, fire, or injury to persons:
- An appliance should never be left unattended when plugged in.
- Close supervision is necessary when this appliance is used by, on, or near children or individuals with certain disabilities.
- Use this appliance only for its intended use as described in this manual. Do not use attachments not recommended by the manufacturer.
- Never operate this appliance if it has a damaged cord or plug, if it is not working properly, or if it has been dropped, damaged, or dropped into water.
- Keep the cord away from heated surfaces. Do not wrap the cord around the appliance.
- Never block the air openings of the appliance or place it on a soft surface, such as a bed or couch, where the air openings may be blocked. Keep the air openings free of lint, hair, and the like.
- Never use while sleeping.
- Never drop or insert any object into any opening.
- Do not use outdoors or operate where aerosol (spray) products are being used or where oxygen is being administered.

- Do not use an extension cord with this appliance.
- Do not direct hot air towards eyes or other heat-sensitive areas.
- Attachments may be hot during use. Allow them to cool before handling.
- Do not place appliance on any surface while it is operating.
- While using the appliance, keep your hair away from the air inlets.
- This appliance is equipped with an ALCI (Appliance Leakage Circuit Interrupter) safety plug. This device is designed to make the appliance inoperable under some abnormal conditions, such as immersion in water.

## PRODUCT COMPONENTS

The Atopskins 6-in-1 Hot Air Styler comes with a main handle and multiple interchangeable attachments for various styling needs.



Image: The main handle and various styling attachments, including curling barrels, a straightening brush, and oval brushes.

- **Main Handle:** Contains the motor, power controls, and temperature settings.

- **30mm Automatic Curlers (2):** Utilizes Coanda effect for effortless curling.
- **Fast Dryer Attachment:** For quick drying before styling.
- **Hair Straightener Brush:** For smooth, straight hair with added shine.
- **Oval Brush:** Adds volume and shape to thin hair.
- **Large Oval Brush:** Creates voluminous and bouncy curls for thick hair.
- **Accessories:** Heat-resistant glove, cleaning brush.

## SETUP AND ATTACHMENT INSTALLATION

---

To attach a styling head:

1. Ensure the main handle is unplugged and cool.
2. Align the desired attachment with the connection point on the main handle.
3. Push the attachment firmly onto the handle until it clicks into place, indicating it is securely locked.

To remove an attachment:

1. Ensure the appliance is unplugged and completely cool.
2. Locate the release button or mechanism on the handle.
3. Press the release button and gently pull the attachment away from the handle.

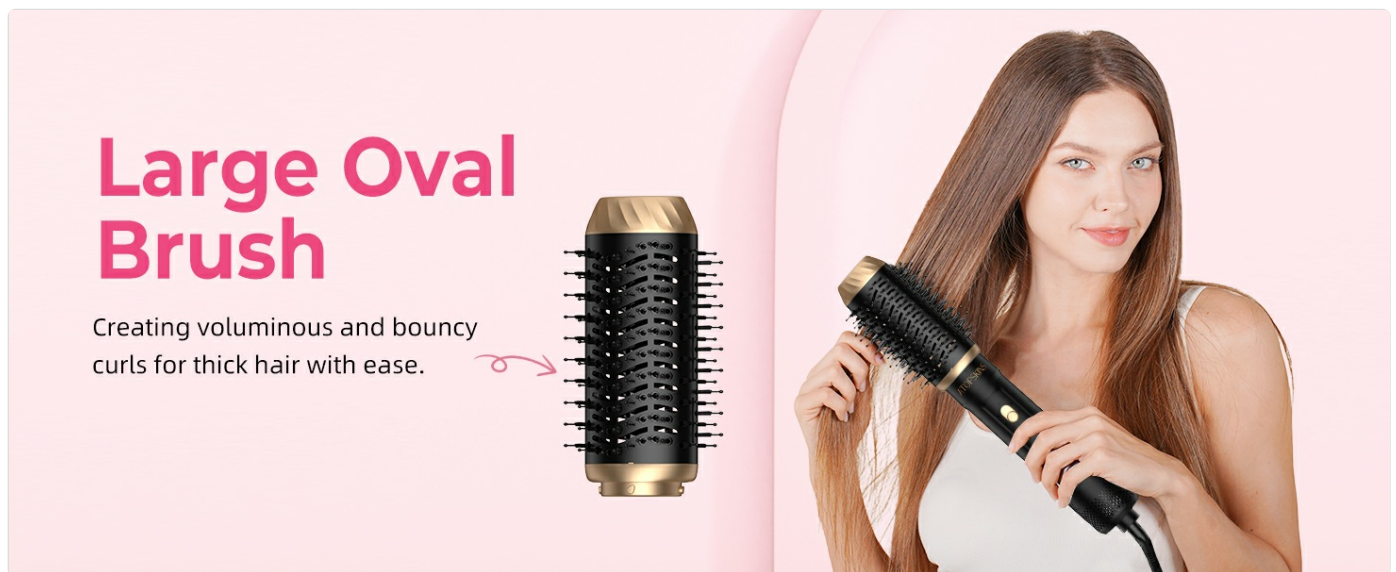


Image: Visual guide for attaching and detaching the styling heads to the main unit.

## OPERATING INSTRUCTIONS

---

### General Use

- Plug the appliance into a suitable electrical outlet.
- Select the desired heat setting using the control switch on the handle.
- Allow the appliance to heat up for a few moments before use.
- Always ensure hair is clean and detangled before styling.

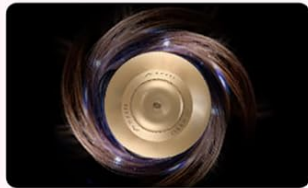
### Drying Hair (with Fast Dryer Attachment)

Use the fast dryer attachment to quickly remove excess moisture from your hair before proceeding with styling. This helps protect hair and maintain its natural moisture.

# Wrap, Curl, Set Automatically

with Coanda effect.

A faster, easier way to achieve  
long lasting curls.



Coanda Effect



Image: The fast dryer attachment in use, quickly drying hair.

## Curling Hair (with Automatic Curlers)

The automatic curlers utilize the Coanda effect to wrap hair around the barrel for effortless curls.

1. Take a 5-8 cm wide section of hair.
2. Hold the curler near the end of the hair section; the hair will automatically be drawn and wrapped around the barrel.
3. Move the curler handle parallel to the hair roots and hold for approximately 8 seconds.
4. Release the hair gently. For longer-lasting curls, avoid brushing immediately after styling. Use mousse or styling spray.

*Atopskins*

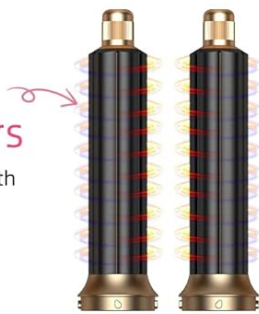
# 6 IN 1 Hot Air Styler



Image: A visual representation of the Coanda effect, showing how hair is automatically wrapped around the curling barrel.

## 30mm Automatic Curlers

Creating lasting blowout curls with Coanda effect, no heat damage.



## Fast Dryer

Quickly dries before styling  
keep hair's natural moisture.



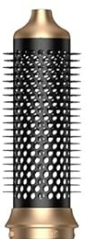
## Hair Straightener Brush

Smooth straightening for maximum  
shine and volume.



## Oval Brush

Adding volume to thin hair  
with precise drying and  
shaping.



## Large Oval Brush

Creating voluminous and bouncy  
curls for thick hair with ease.



Image: A woman demonstrating the use of the automatic curler attachment to create waves.

Your browser does not support the video tag.

Video: Demonstration of the Atopskins Detachable Air Styler Tool in action, showing how to achieve curls.

## Straightening Hair (with Hair Straightener Brush)

Attach the hair straightener brush for smooth, sleek results.

- Ensure hair is dry or slightly damp.
- Section your hair.
- Slowly glide the brush through each section from root to tip.



Image: A woman using the hair straightener brush to achieve smooth, straight hair.

## Volumizing and Shaping (with Oval Brushes)

Use the oval brushes to add volume, shape, and bouncy curls.

- For volume, lift hair at the roots with the brush and direct airflow.
- For bouncy curls, wrap sections of hair around the brush and hold for a few seconds before releasing.



Image: A woman using the oval brush attachment to add volume and shape to her hair.

## HEAT SETTINGS

The Atopskins Hot Air Styler features 3 adjustable heat settings to suit different hair types and styling needs. The intelligent heat control technology helps prevent heat damage.

- **Low (122°F / 50°C):** Gentle heat for fine, delicate, or damaged hair, or for setting styles.
- **Medium (176°F / 80°C):** Moderate heat for normal hair types.
- **High (230°F / 105°C):** Maximum heat for thick, coarse, or hard-to-style hair, and for fast drying.



Image: Illustration highlighting how lower heat settings protect hair from damage.

## MAINTENANCE AND CLEANING

Regular cleaning ensures optimal performance and extends the life of your Atopskins Hot Air Styler.

1. **Always unplug** the appliance and allow it to cool completely before cleaning.
2. Use the provided cleaning brush to remove any hair or lint from the air inlet filter and styling attachments.
3. Wipe the exterior of the appliance and attachments with a soft, damp cloth. Do not use abrasive cleaners or solvents.
4. Ensure all parts are completely dry before storing or using again.
5. Do not immerse the appliance in water or any other liquid.

## TROUBLESHOOTING

Problem	Possible Cause	Solution
Appliance does not turn on.	Not plugged in; power outlet malfunction; ALCI tripped.	Ensure plug is fully inserted. Test outlet with another device. Press the "RESET" button on the ALCI plug.
Low airflow or overheating.	Air inlet/outlet blocked by lint or hair.	Unplug and allow to cool. Clean the air inlet filter and ensure outlets are clear.
Attachments not staying on.	Attachment not fully engaged; locking mechanism issue.	Ensure attachment is pushed firmly until it clicks. Check for any debris preventing proper connection.
Hair not curling/straightening effectively.	Incorrect heat setting; hair too wet/dry; section size too large.	Adjust heat setting. Ensure hair is appropriate dampness for styling. Use smaller hair sections.

## SPECIFICATIONS

- **Model:** B0FDGLXMV9
- **Brand:** Atopskins
- **Product Dimensions:** 12.8 x 8.8 x 3.1 inches
- **Weight:** 2.29 Pounds
- **Number of Heat Settings:** 3
- **Maximum Temperature:** 230°F (105°C)
- **Safety Feature:** ALCI Plug

## WARRANTY AND SUPPORT

For warranty information or technical support, please refer to the product packaging or contact Atopskins customer service directly. Keep your purchase receipt as proof of purchase for any warranty claims.

*Note: Specific warranty terms may vary by region and retailer.*

