

[Manuals.plus](#) /

> [usikey](#) /

> usikey Buffet Cabinet with Storage and Drawers (Model: B0FDGHHG1LW) - Instruction Manual

## usikey B0FDGHHG1LW

# usikey Buffet Cabinet with Storage and Drawers

Model: B0FDGHHG1LW | Brand: usikey

## 1. SAFETY INFORMATION

**Important:** Always assemble the cabinet according to the provided instructions. Ensure the cabinet is properly secured to the wall to prevent tipping, especially when loaded with heavy items.

This product includes an anti-tipping device for enhanced safety. Please ensure it is correctly installed as per the assembly instructions.

# ANTI-TIP-OVER DEVICE

Prevent Tip-Over Incidents Keep Stable and family safety

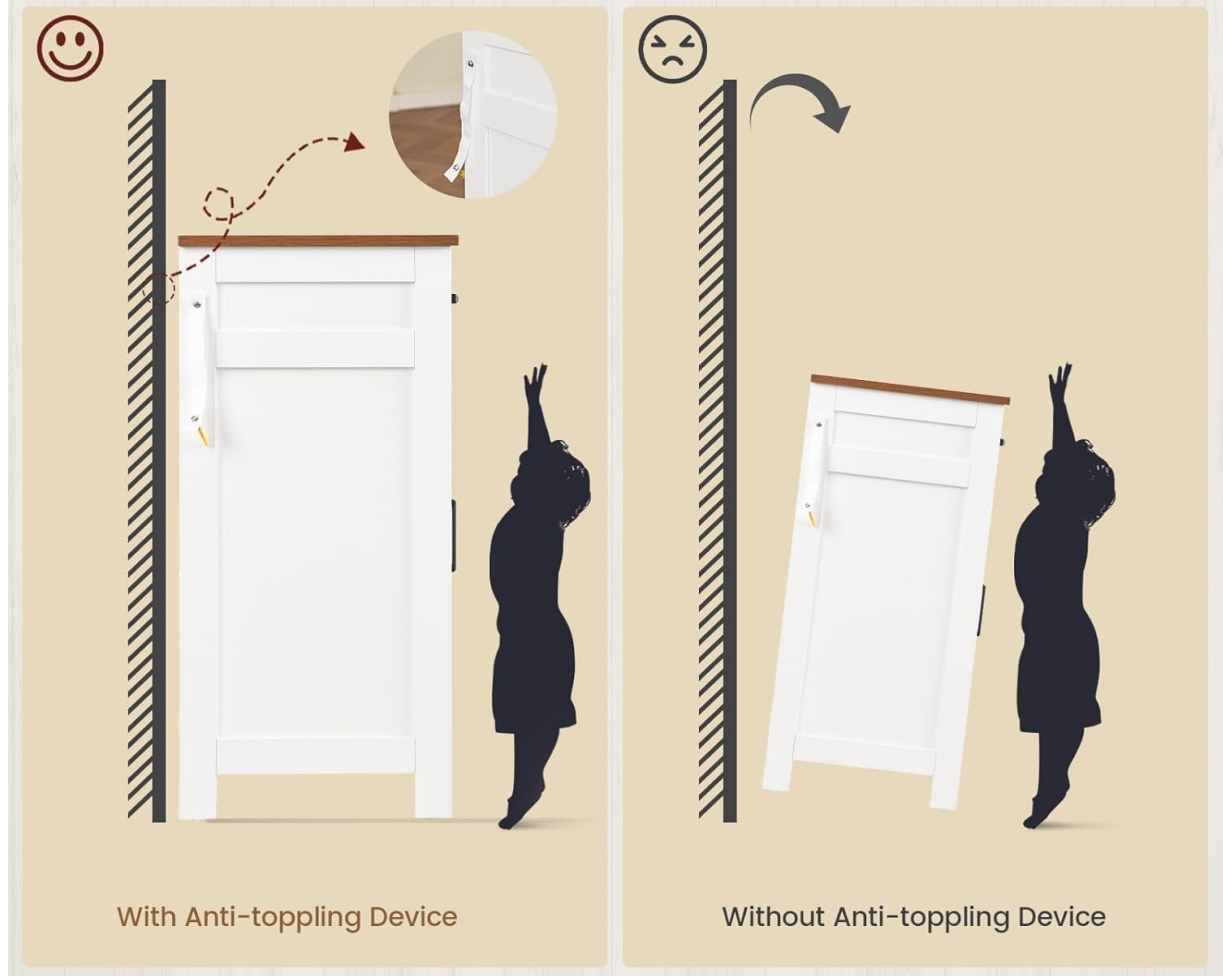


Image: Anti-Tip-Over Device Installation Diagram. This diagram illustrates the correct installation of the anti-tip device, showing how it secures the cabinet to the wall to prevent accidental tipping.

## 2. PRODUCT OVERVIEW

The usikey Buffet Cabinet is a versatile storage solution featuring a rustic brown tabletop, black metal handles, and a white finish, designed to complement various home decors. It offers ample storage with four doors and two spacious drawers.

- **Ample Storage Space:** Equipped with 4 doors and 2 spacious drawers, providing functional storage for dishes, glassware, bar essentials, or household items. The 55-inch length tabletop is suitable for appliances like microwaves or coffee makers.
- **Adjustable Shelves:** Two inner shelves can be easily adjusted to customize internal space, accommodating items of different sizes.
- **Multipurpose Design:** Can function as a coffee bar, wine bar, TV stand, or additional kitchen/living room storage.
- **Durable Construction:** Crafted from high-quality manufactured wood with smooth-gliding rails for reliable stability and durability.

**Overall Dimensions:** 15"D x 55.1"W x 31.5"H



Image: Fully assembled usikey Buffet Cabinet in a kitchen environment, showcasing its design and functionality.

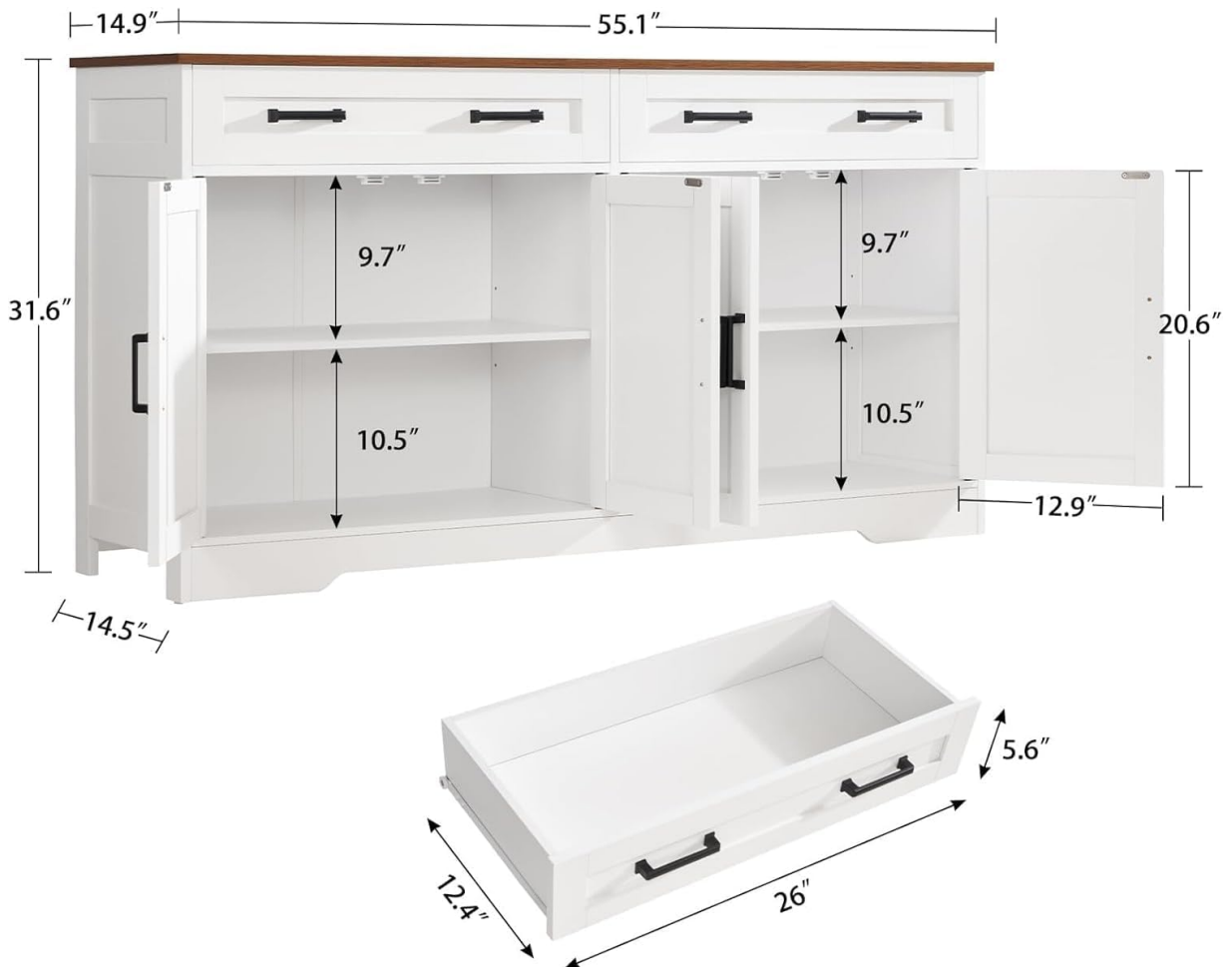


Image: Detailed product dimensions for the usikey Buffet Cabinet, illustrating height, width, depth, and internal compartment sizes.

---

### 3. PARTS LIST

Please refer to the included packaging for a complete and detailed list of all parts and hardware. Ensure all components are present and undamaged before beginning assembly.

---

### 4. ASSEMBLY INSTRUCTIONS

For a detailed, step-by-step visual guide, please refer to the official installation video below. This video covers the entire assembly process from start to finish.

Your browser does not support the video tag.

Video: USIKEY Buffet Cabinet Installation Guide. This video provides comprehensive visual instructions for assembling your buffet cabinet.

#### General Assembly Steps:

1. **Prepare Components:** Lay out all panels and hardware on a clean, soft surface to prevent scratches. Identify each part using the labels in the parts list.
  2. **Assemble Base Frame:** Connect the bottom panels and side supports using the provided cam locks and screws. Ensure all connections are secure.
  3. **Install Drawer Slides:** Attach the drawer slides to the designated side panels of the cabinet frame. Pay attention to the orientation (left/right).
  4. **Attach Adjustable Feet:** Secure the adjustable leveling feet to the bottom of the cabinet base.
  5. **Construct Inner Dividers:** Assemble the central divider and any fixed shelves within the cabinet structure.
  6. **Insert Back Panels:** Slide the back panels into their grooves, securing them with small nails or screws as indicated.
  7. **Attach Top Panel:** Carefully place and secure the rustic brown top panel to the assembled frame using cam locks and screws.
  8. **Assemble Drawers:** Construct the drawer boxes by connecting the side, front, and back panels. Attach the remaining drawer slides to the drawer boxes.
  9. **Install Doors:** Attach the hinges to the cabinet doors and then mount the doors to the cabinet frame.
  10. **Insert Drawers:** Carefully slide the assembled drawers into their respective tracks.
  11. **Install Handles:** Attach the black metal handles to the drawers and cabinet doors.
  12. **Install Anti-Tipping Device:** Securely attach the anti-tipping device to the back of the cabinet and to a wall stud.
- 

### 5. OPERATING INSTRUCTIONS

#### 5.1. Using Drawers

The cabinet features two smooth-gliding drawers. To open, gently pull the handle. To close, push the drawer back until it is flush with the cabinet front. Avoid forcing drawers if they encounter resistance.



## 2 Smooth Sliding Drawers

Image: Overhead view of the buffet cabinet with drawers open, demonstrating smooth operation and internal storage capacity.

### 5.2. Using Cabinet Doors

The four cabinet doors open outwards. Pull the handles to open. Push the doors gently to close until the magnetic catches engage, ensuring they are securely shut.

## Ample Storage Capacity



Image: Buffet cabinet with doors open, showcasing the adjustable shelves and organized storage space.

### 5.3. Adjusting Shelves

The cabinet includes two adjustable inner shelves. To adjust a shelf, remove all items from it. Carefully lift the shelf and reposition the shelf pins to the desired height. Ensure all four pins are securely inserted into the corresponding holes before placing the shelf back.



Image: Close-up view of the adjustable shelves, highlighting the various height options available.

## 6. MAINTENANCE

- **Cleaning:** Wipe surfaces with a soft, damp cloth. Avoid harsh chemicals or abrasive cleaners, as these can damage the finish.
- **Spills:** Clean up spills immediately to prevent staining or moisture damage to the engineered wood.
- **Hardware:** Periodically check all screws and fasteners to ensure they remain tight. Retighten if necessary.
- **Sunlight Exposure:** Avoid prolonged exposure to direct sunlight to prevent fading or discoloration of the wood finish.

## 7. TROUBLESHOOTING

### 7.1. Door Alignment Issues

If the cabinet doors appear misaligned or have uneven gaps after assembly, adjustments can often be made to the hinges or the cabinet's leveling feet.

- **Hinge Adjustment:** Most cabinet hinges allow for minor adjustments using a screwdriver. Refer to

the hinge manufacturer's instructions or common hinge adjustment guides for specific details.

- **Leveling Feet Adjustment:** Ensure the cabinet is placed on a level surface. Use the adjustable leveling feet (if installed) to fine-tune the cabinet's stability and overall alignment, which can sometimes resolve minor door alignment issues.

Your browser does not support the video tag.

Video: Adjust the Door Gap Tutorial. This short video demonstrates how to adjust the door gaps on your cabinet for proper alignment.

## 7.2. Drawers Not Sliding Smoothly

If drawers are stiff or do not slide smoothly, check the following:

- **Slide Alignment:** Ensure the drawer slides on both the drawer box and the cabinet frame are correctly aligned and securely fastened.
- **Obstructions:** Check for any debris or objects obstructing the drawer slides.
- **Lubrication:** A small amount of silicone-based lubricant can be applied to the drawer slides to improve smoothness.

## 8. SPECIFICATIONS

<b>Brand</b>	usikey
<b>Model Number</b>	B0FDGHG1LW
<b>Product Dimensions</b>	15"D x 55.1"W x 31.5"H
<b>Material</b>	Engineered Wood
<b>Color</b>	White-55"
<b>Special Features</b>	Adjustable Shelf, Anti-Tipping, Heavy Duty, Moisture Resistant
<b>Mounting Type</b>	Floor Mount
<b>Number of Shelves</b>	2
<b>Number of Drawers</b>	2
<b>Assembly Required</b>	Yes

## 9. WARRANTY AND SUPPORT

For warranty information or customer support, please refer to the documentation included with your product or contact usikey customer service directly. Keep your purchase receipt for warranty claims.