

Manuals+

[Q & A](#) | [Deep Search](#) | [Upload](#)

Manuals.plus /

› [SinoTrack](#) /

› SinoTrack ST-906L 4G GPS Tracker Device User Manual

SinoTrack ST-906L

SinoTrack ST-906L 4G GPS Tracker Device User Manual

Model: ST-906L

1. PRODUCT OVERVIEW

The SinoTrack ST-906L is a 4G GPS tracker designed for real-time tracking of vehicles. It offers features such as location monitoring, speed and route tracking, geo-fence alerts, and remote engine cutoff capabilities. This device is suitable for cars, trucks, and fleets, providing enhanced safety and security.

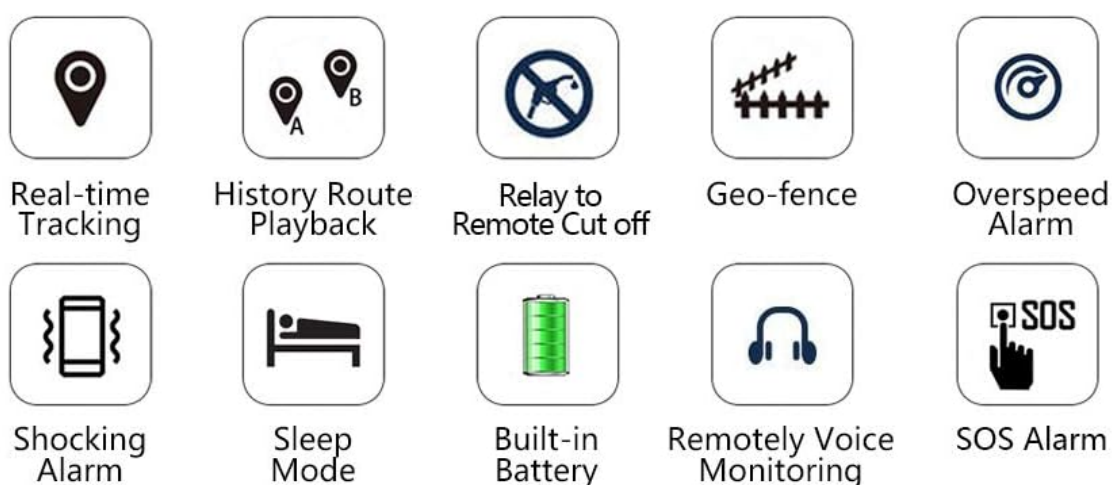


Image 1.1: SinoTrack ST-906L GPS Tracker device with its dimensions (1.97 x 0.98 x 3.94 inches) and a visual representation of its key features including Real-time Tracking, History Route Playback, Relay to Remote Cut off, Geo-fence, Overspeed Alarm, Shocking Alarm, Sleep Mode, Built-in Battery, Remotely Voice Monitoring, and SOS Alarm.

Key Features:

- **Real-Time Tracking:** Provides instant location updates and unlimited trip history storage.
- **Geo-Fence Alerts:** Notifies you when the vehicle enters or exits a predefined area.
- **Overspeed Alarm:** Alerts you if the vehicle exceeds a set speed limit.
- **Remote Engine Cutoff:** Allows you to remotely disable the engine in case of theft (at speeds under 20km/h).
- **Built-in Battery:** Provides backup power if disconnected from the main power source.
- **SOS Alarm Key:** For emergency notifications.
- **Nationwide USA Coverage:** Supports 4G network for broad coverage.

2. PACKAGE CONTENTS

Verify that all items are present in the package:

- 1 x ST-906L GPS Tracker
- 1 x Power Cable
- 1 x SOS Alarm Key
- 1 x Locker Relay

- 1 x MIC Wire (Microphone)
- 1 x Sticker
- 1 x Original Box



Image 2.1: The complete package contents for the SinoTrack ST-906L GPS Tracker, including the tracker unit, wiring harness, relay, microphone, SOS button, and instruction manual.

3. SETUP AND INSTALLATION

Proper setup is crucial for the optimal performance of your SinoTrack GPS tracker. This device requires a 4G SIM card with calling, texting, and internet capabilities.

Step 1: Activate SIM Card

1. Purchase a local 4G SIM card.
2. Insert the SIM card into your mobile phone to activate it and remove any PIN code.
3. Confirm that the SIM card can make calls, send texts, and has an active internet connection.
4. Once confirmed, remove the SIM card from your phone and insert it into the SinoTrack GPS tracker.

Step 2: Power On the Tracker

1. Charge the device for approximately 1 hour initially.

2. After powering on, the yellow and blue indicator lights will flash as the device searches for network and GPS signals.
3. Place the device in an area with good reception (e.g., near a window or outdoors) and wait approximately 5 minutes for both lights to become constant. If the yellow light continues to flash, move the device to another location.
4. Note: The device will use GPS for location when a signal is available; otherwise, it will use LBS (Location Based Service).

Step 3: Configure APN Settings

The APN (Access Point Name) settings are essential for the tracker to connect to the internet. Obtain your SIM card's APN details from your service provider.

Send SMS commands from another phone to the tracker's SIM card number:

- **If your SIM card's APN has no username or password:**
Send: **8030000 APN_NAME** (e.g., **8030000 everywhere**)
The tracker will reply with "SET OK".
- **If your SIM card's APN has a username and password:**
Send: **8030000 APN_NAME APN_USER APN_PASS** (e.g., **8030000 everywhere eesecure secure**)

Note: APN details vary by SIM card provider. Use the specific APN information for your SIM card.

Step 4: Set GPRS Mode

To enable GPRS mode for online tracking, send the following SMS command:

7100000

Wait approximately 30 seconds. Both the blue and orange indicator lights should remain ON, indicating that the device is online and ready for tracking via the SinoTrack PRO web platform or mobile app.

Your username for login is the tracker's ID number (found on the product), and the default password is **123456**.

Wiring Diagram (General)

The tracker comes with a wiring harness. The red (+) and black (-) wires are essential for power. The orange (ACC) and yellow (relay) wires are optional, as are the wired microphone and SOS button.

- **Red Wire:** Positive power connection.
- **Black Wire:** Negative power/ground connection.
- **Orange Wire (ACC):** Connects to the vehicle's ignition (Accessory) for ignition status detection.
- **Yellow Wire (Relay):** Connects to the included relay for remote engine cutoff functionality.
- **MIC Wire:** For connecting the external microphone for remote voice monitoring.
- **SOS Alarm Key:** For connecting the external SOS button.

Applicable Modles



Image 3.1: The SinoTrack GPS Tracker is compatible with various vehicle types, including buses, trucks, off-roaders, motorcycles, and cars.

4. OPERATING INSTRUCTIONS

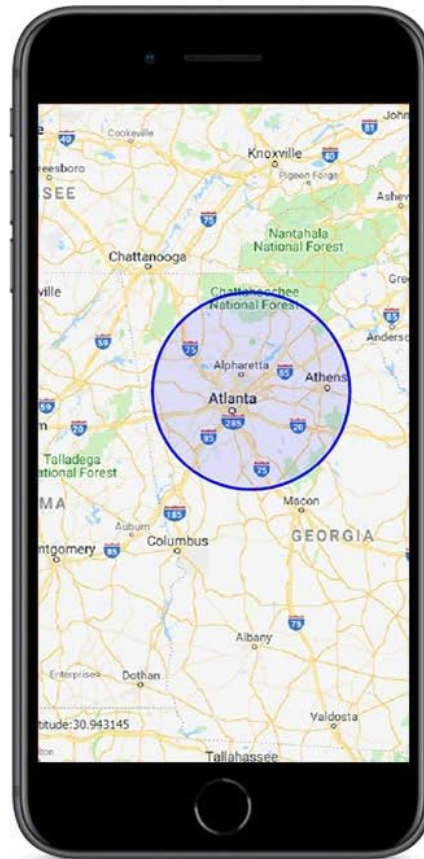
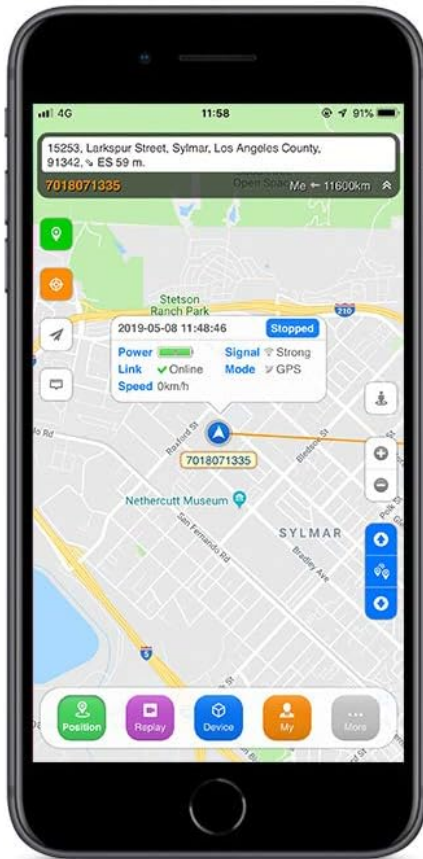
Real-Time Tracking

Access real-time location data through the SinoTrack PRO mobile application (available on iOS and Android) or the web platform. The application displays the current location, speed, and status of your vehicle.

Real-Time Tracking



Geofence



Support free App to use

Track in real time with our free APP available for iPhone and Android

Image 4.1: The SinoTrack mobile application interface demonstrating real-time vehicle tracking on a map and the setup of a geofence area.

History Route Playback

The SinoTrack PRO platform allows you to review past journeys, including detailed route logs. This feature provides insights into travel history, stops, and speeds.

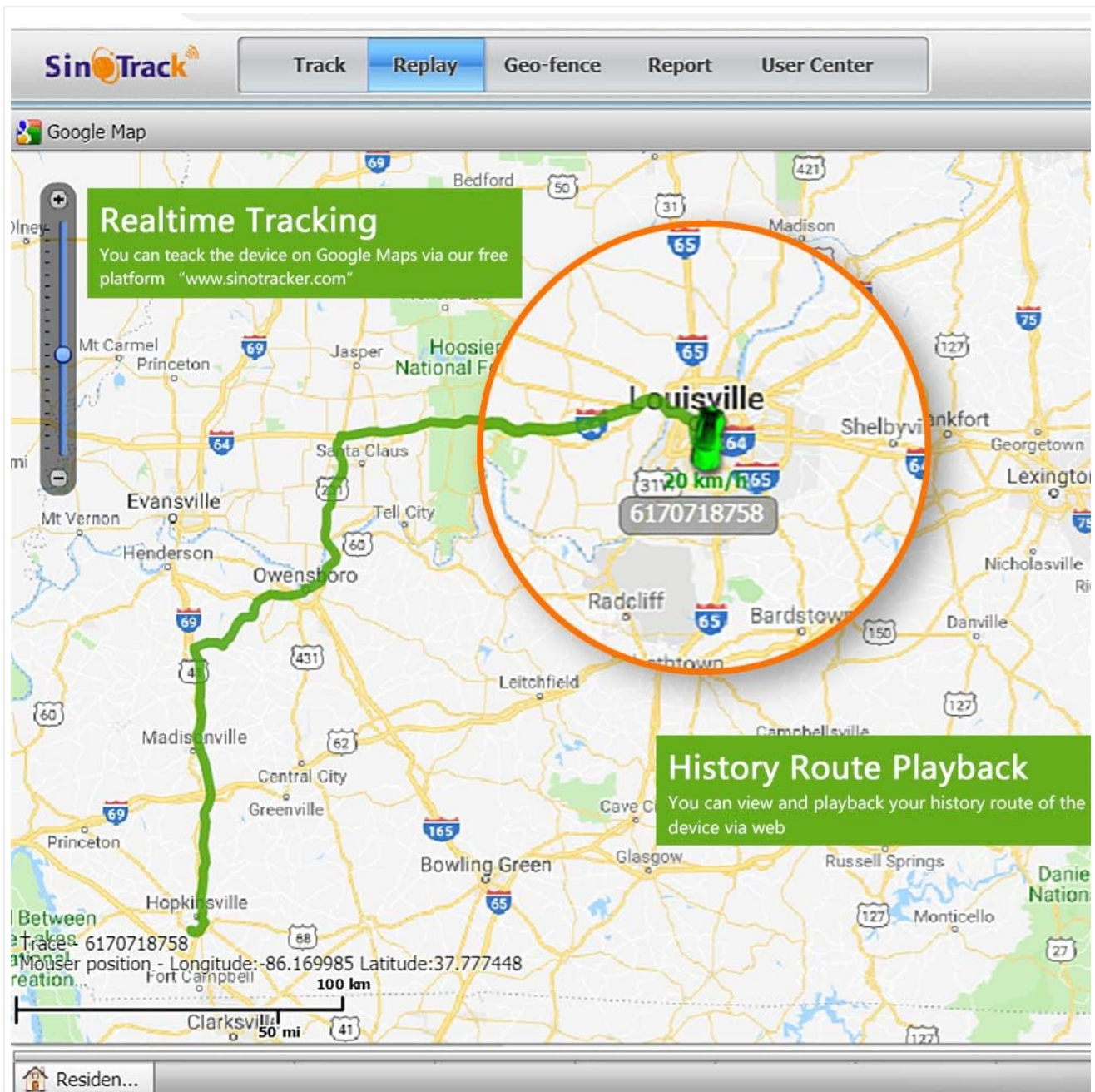


Image 4.2: The SinoTrack web interface displaying a vehicle's historical route playback on a map, alongside real-time tracking capabilities.

Geo-Fence Alerts

Set up virtual boundaries (geo-fences) on the map. You will receive instant alerts on your phone if the vehicle enters or exits these predefined areas. This feature is useful for security and monitoring vehicle usage.

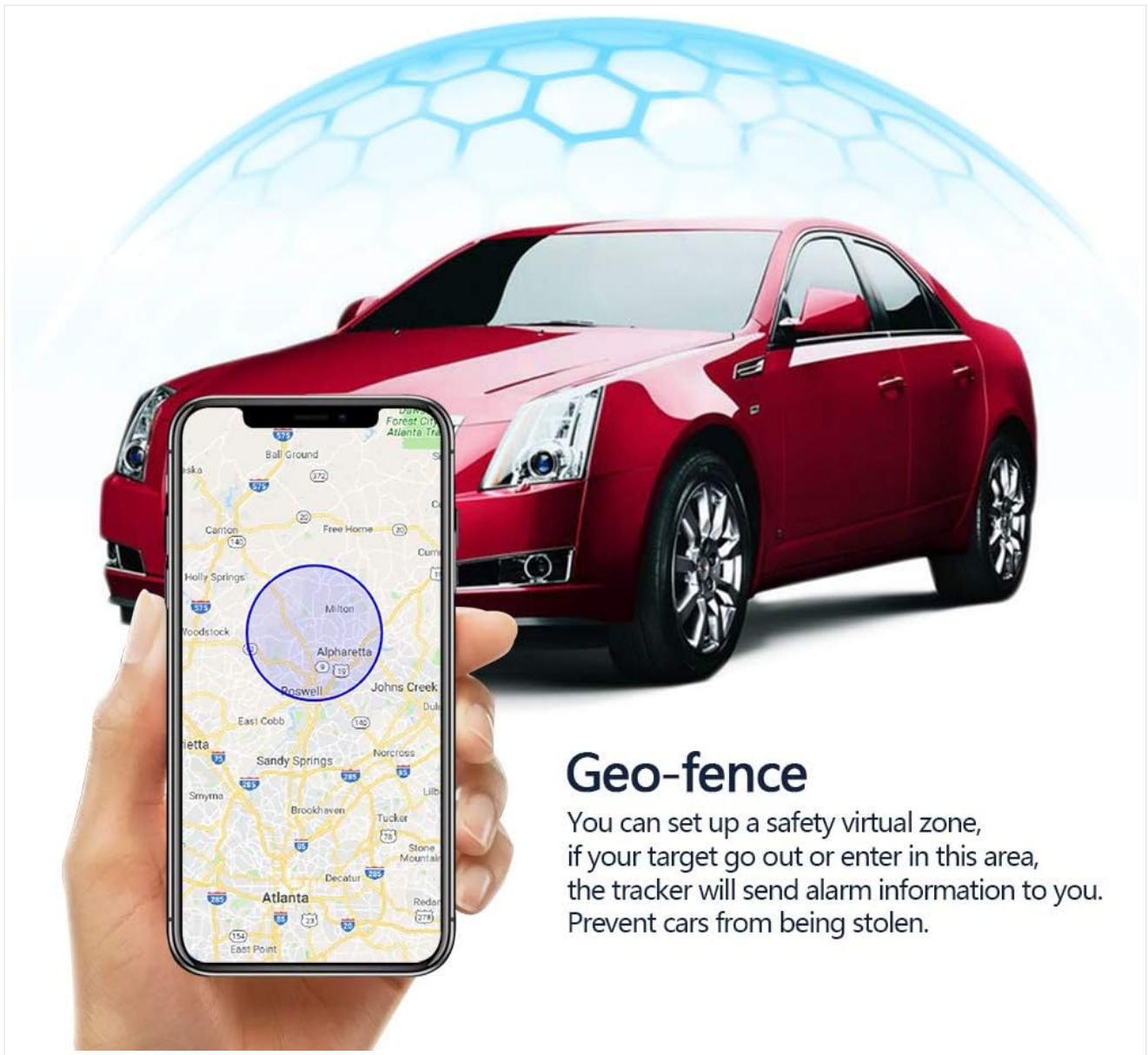


Image 4.3: A visual representation of the geo-fence feature, showing a car located within a designated virtual safety zone on a smartphone map.

Geo-fence

You can set up a safety virtual zone, if your target go out or enter in this area, the tracker will send alarm information to you. Prevent cars from being stolen.

Remote Engine Cutoff

In the event of vehicle theft, you can remotely cut off the engine. This function works at speeds under 20 km/h and will stop the vehicle within 10-20 seconds.

- To cut off the engine, send an SMS command to the tracker's SIM card number. (Specific command not provided in data, refer to full manual if available).
- To restart the engine, send the unlock code: **9400000**

SMS Alerts and Primary Control Number

To receive SMS alerts for various alarms (e.g., overspeed, shocking, geo-fence breaches), you must set up a primary control number for the device. Refer to the full instruction manual for the specific SMS command to set this number. Without this setup, you will not receive SMS notifications.

5. MAINTENANCE

To ensure the longevity and reliable operation of your SinoTrack GPS tracker, follow these maintenance guidelines:

- **Charging:** Ensure the device is adequately charged, especially during initial setup. The built-in battery

provides backup but has limited duration on its own.

- **Cleanliness:** Keep the device clean and free from dust and debris. Use a soft, dry cloth for cleaning.
- **Environmental Conditions:** Avoid exposing the device to extreme temperatures, direct sunlight for prolonged periods, or excessive moisture. While the device is waterproof, prolonged submersion or exposure to high-pressure water jets should be avoided.
- **Wiring Inspection:** Periodically check the wiring connections for any signs of wear, corrosion, or loose connections.
- **SIM Card:** Ensure the SIM card is securely inserted and remains active with a data plan.

6. TROUBLESHOOTING

If you encounter issues with your SinoTrack GPS tracker, refer to the following common problems and solutions:

Device Shows China Location Online

If the device appears online but displays a location in China, it indicates that it has not yet acquired a local GPS signal.

- **Solution:** Take the device to an outdoor location with good signal reception. Once it acquires a GPS signal, its location will update to your current position.

Device Not Online

If the device is not showing as online on the SinoTrack PRO platform:

- **Solution:** Send the SMS command **RCONF** to the device's SIM card number. The device will reply with its current settings. Check the following in the reply:
 - **APN:** Verify that the APN setting is correct for your SIM card provider.
 - **IP and Port:** Ensure the IP address and port number are correct (these are typically provided in the full user manual).
 - **Working Model:** Confirm that the device is set to GPRS mode.

SOS Button Notifications Not Working

Some users have reported issues with app notifications for the SOS button.

- **Solution:** Ensure that a primary control number has been correctly set up for the device to receive SMS alerts. Check app settings for push notification permissions. If the issue persists, consult SinoTrack customer support.

SIM Card Related Issues

Problems with tracking often stem from SIM card activation or data plan issues.

- **Solution:** Double-check that the 4G SIM card is active, has sufficient data, and its PIN code has been disabled. Confirm that the APN settings are correctly configured as per Step 3 of the Setup section.

7. SPECIFICATIONS

Feature	Detail
Brand	SinoTrack

Model Number	ST-906L 4G only
Connectivity Technology	GPS, LTE (4G)
Supported Application	SinoTrack PRO (iOS, Android, Web APP)
Specific Uses	GPS tracker for cars, car alarms, anti-lost alarm tracker
Special Features	Waterproof, Cut Engine Off, Real Time Tracking, Alert Notification, Geo-Fence, History Route Playback, Rechargeable
Compatible Devices	Personal Computer, Smartphones
Item Dimensions	1.97 x 0.98 x 3.94 inches
Item Weight	150 Grams
Manufacturer	SinoTrack

8. WARRANTY AND SUPPORT

Warranty Information

The SinoTrack ST-906L GPS Tracker comes with a 30-day no-questions-asked return policy. For specific warranty terms beyond this period, please refer to your purchase documentation or contact SinoTrack directly.

Customer Support

For further assistance, technical support, or inquiries regarding your SinoTrack ST-906L device, please refer to the SinoTrack PRO application or visit the official SinoTrack website. Contact information may also be available in the original product packaging.