

## Manuals+

[Q & A](#) | [Deep Search](#) | [Upload](#)

manuals.plus /

- › [Moman](#) /
- › [Moman H4M Motorcycle Helmet Headset User Manual](#)

## Moman H4M

# Moman H4M Motorcycle Helmet Headset User Manual

Model: H4M

## INTRODUCTION

The Moman H4M Motorcycle Helmet Headset is designed to enhance your riding experience with advanced audio features and convenient controls. This headset offers a user-friendly LCD screen, Bluetooth 5.3 connectivity, HiFi stereo sound with 6 EQ modes, an AI voice assistant, FM radio, and IPX6 waterproof rating for reliable performance in various conditions. This manual provides detailed instructions for installation, operation, and maintenance.



Image: Moman H4M Motorcycle Headset with LCD Screen, highlighting its key features.

## PACKAGE CONTENTS

Verify that all items are present in your package:

- 1 x H4M Headset Unit
- 1 x Replaceable Microphone (Boom or Soft Wire)
- 1 x Back Clip
- 1 x Type-C Charging Cable
- 1 x User Manual

- 1 x Velcro Clip Kit

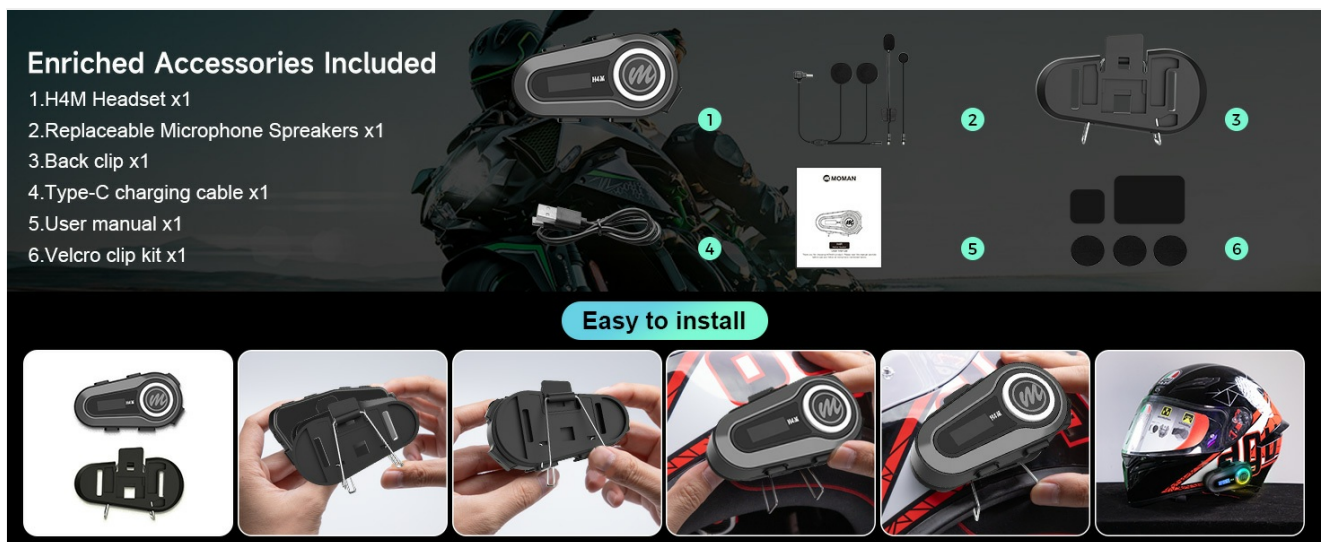


Image: Diagram showing the H4M headset and its complete set of accessories, including microphones, clips, and charging cable.

## SETUP

### 1. Installation on Helmet

The Moman H4M headset can be installed using either the back clip or the Velcro clip kit, depending on your helmet type and preference. Ensure the headset is securely attached to the side of your helmet, allowing easy access to controls.

1. Choose the appropriate mounting method (clip or adhesive Velcro).
2. Attach the main unit to the helmet.
3. Insert the speakers into the helmet's ear pockets.
4. Position the microphone (boom mic for open-face helmets, soft wire mic for full-face helmets) near your mouth.
5. Connect the speaker and microphone cables to the main unit's interface.



Image: Visual guide demonstrating the easy installation process of the H4M headset onto a motorcycle helmet.

### 2. Initial Charging

Before first use, fully charge the headset. Connect the Type-C charging cable to the headset and a power source. The LCD screen will indicate charging status. A full charge takes approximately 2 hours.



### 3. Bluetooth Pairing

The H4M uses Bluetooth 5.3 for stable connections.

1. Ensure the headset is powered off.
2. Press and hold the Power/Play/Pause button until the LCD screen displays 'Pairing' or a similar indicator.
3. On your smartphone or other Bluetooth device, search for 'Moman H4M' in the Bluetooth settings.
4. Select 'Moman H4M' to connect. The LCD screen will confirm a successful connection.

The H4M can simultaneously connect to two smartphones, allowing for navigation, calls, and music playback concurrently.



Image: Internal view of the Moman H4M headset, highlighting the Bluetooth 5.3 chip for enhanced connectivity and the 40mm speaker for superior audio.

## OPERATING INSTRUCTIONS

### 1. Controls Overview



Image: Detailed diagram illustrating the location and function of each button and interface on the Moman H4M headset, including volume, power, mode, AI voice assistant, and charging port.

- **On/Off Key:** Press and hold to power on/off. Short press to Play/Pause music or Answer calls.
- **Volume Up/Next Song:** Short press for volume up. Long press for next song.
- **Volume Down/Previous Song:** Short press for volume down. Long press for previous song.
- **AI Voice Assistant Button:** Short press to activate your smartphone's voice assistant (Siri, Google Assistant).
- **Mode Key:** Short press to cycle through EQ modes or switch to FM radio.

## 2. LCD Screen Display

The integrated LCD screen provides real-time operational information, making it easy to monitor your headset's status.

- **Battery Level:** Displays current battery charge.
- **Volume:** Shows current audio volume.
- **FM Radio Frequency:** Indicates the active FM station.
- **Play/Pause Status:** Shows music playback status.
- **Temperature:** Displays ambient temperature (in Celsius or Fahrenheit).

# User-Friendly LCD Screen

Display a wealth of operating information.



Image: Close-up of the Moman H4M's user-friendly LCD screen, showing battery status, volume, FM frequency, and temperature display.

### 3. Audio Experience: HiFi Stereo & EQ Modes

The H4M features a 40mm tuned speaker for 3D HiFi stereo sound. Customize your audio with 6 EQ modes:

- Jazz
- Normal
- Pop
- Country
- Rock
- Classic

Press the Mode key to cycle through these equalization settings.



# Lossless **Hi-Fi** Stereo Sound

Enjoy music more authentically and completely, like in a concert!



Image: A motorcycle helmet with the Moman H4M headset, visually representing the immersive Hi-Fi stereo sound experience.

## 6 Personalized EQ Mode

Immerse yourself in a stunning surround music experience.



Image: The Moman H4M headset's LCD screen showing the selection of 6 personalized EQ modes, including Jazz, Normal, Pop, Country, Rock, and Classic.

### 4. AI Voice Assistant

Activate your smartphone's voice assistant (Siri or Google Assistant) with a single press of the dedicated voice control button. This allows for hands-free operation of navigation, music, and calls, enhancing safety while riding.



# AI Voice Assistant For Hands-Free

Open GPS

Play music

# Hey, Siri!

Volume up

Call Mike

Next song



Image: Illustration of the Moman H4M headset's AI Voice Assistant feature, showing a rider interacting with their phone's assistant for hands-free control.

## 5. FM Radio

Enjoy stereo FM radio during your rides. Use the Mode key to switch to FM radio mode and the volume buttons to tune stations.



# Stereo FM Radio

Immerse yourself in a stunning surround music experience.



Image: The Moman H4M headset displaying its Stereo FM Radio capability, surrounded by visual representations of various radio content like music, news, and sports.

## MAINTENANCE

The Moman H4M headset is designed with an IPX6 waterproof rating, ensuring protection against strong jets of water. This makes it suitable for use in various weather conditions.

- **Cleaning:** Wipe the headset with a damp cloth. Avoid using harsh chemicals or abrasive cleaners.
- **Water Exposure:** While IPX6 rated, avoid submerging the device. Ensure charging port covers are securely closed when not charging to maintain water resistance.
- **Storage:** Store in a cool, dry place when not in use.

# IPX6 Waterproof & Dustfree

Enjoy riding in any harsh environment



Image: The Moman H4M headset shown with water splashing, illustrating its IPX6 waterproof and dustproof design for use in challenging environments.

## TROUBLESHOOTING

If you encounter issues with your Moman H4M headset, refer to the following common solutions:

- **No Power:** Ensure the headset is fully charged. Connect to a power source and check the LCD for charging indication.
- **Cannot Pair:** Ensure the headset is in pairing mode (LCD displays 'Pairing'). Turn off and on your smartphone's Bluetooth, then try pairing again. Ensure no other devices are actively connected to the headset.
- **No Sound/Low Volume:** Check the volume level on both the headset and your connected device. Ensure speakers are correctly installed and connected.
- **Disconnection Issues:** Ensure your device is within the effective Bluetooth range. Avoid strong electromagnetic interference.
- **Voice Assistant Not Responding:** Ensure your smartphone's voice assistant is enabled and the headset is properly connected.
- **FM Radio Static:** Try moving to an area with better signal reception.



If problems persist, consult the official Moman support channels for further assistance.

## SPECIFICATIONS

Model Name	Moman H4M
Connectivity Technology	Wireless (Bluetooth 5.3)
Noise Control	Active Noise Cancellation
Battery Life	Up to 32 Hours (Working Time), 360 Hours (Standby Time)
Charging Time	2 Hours
Battery Capacity	1000mAh
Water Resistance Level	IPX6 Waterproof
Audio Driver Type	Dynamic Driver (40mm)
Special Features	LCD Screen, 6 EQ Sound Modes, AI Voice Assistant, FM Radio
Compatible Devices	Smartphones, Motorcycles, Car Audio Systems
Material	Plastic
Item Weight	0.2 Kilograms (7 ounces)

# 1000mAh Large Capacity Battery

# 1000mAh



**2H**  
Charging Time

**32H**  
Working Time

**360H**  
Standby Time

Image: The Moman H4M headset highlighting its 1000mAh large capacity battery, with indicators for 2 hours charging time, 32 hours working time, and 360 hours standby time.







## WARRANTY AND SUPPORT

Moman products are designed for quality and reliability. For warranty information, please refer to the documentation included with your purchase or visit the official Moman website. For technical support, troubleshooting assistance, or to inquire about replacement parts, please contact Moman customer service through their official channels.

You can find more information and contact details on the [Moman Store on Amazon](#).

## Related Documents - H4M



	<p><a href="#">MOMAN H4M PLUS Motorcycle Helmet Bluetooth Headset User Manual</a></p> <p>User manual for the MOMAN H4M PLUS Motorcycle Helmet Bluetooth Headset, covering setup, operation, features, specifications, and care instructions for motorcycle riders. Includes details on Bluetooth connectivity, music control, FM radio, and AI voice assistant.</p>
	<p><a href="#">MOMAN H4M Helmet Headset: User Manual &amp; Features</a></p> <p>Comprehensive guide to the MOMAN H4M Motorcycle Bluetooth Helmet Headset, covering setup, operation, features, specifications, and safety information.</p>
	<p><a href="#">MOMAN H4C Motorcycle Helmet Headset: User Manual &amp; Features</a></p> <p>Comprehensive guide to the MOMAN H4C motorcycle helmet headset, detailing its Bluetooth connectivity, integrated recorder, app control via Roadcam, and operational instructions. Includes specifications and care tips.</p>
	<p><a href="#">MOMAN H4 Plus Wireless Helmet Headset User Manual</a></p> <p>User manual for the MOMAN H4 Plus Wireless Helmet Headset, detailing product features, operation instructions, specifications, and safety information.</p>
	<p><a href="#">MOMAN H2 PRO Headset Helmet Intercom User Manual</a></p> <p>The MOMAN H2 PRO Headset Helmet Intercom User Manual provides comprehensive instructions for operating, installing, and maintaining the H2 PRO Bluetooth intercom system. Learn about features like music control, phone calls, FM radio, multi-intercom pairing, and troubleshooting for an optimal helmet communication experience.</p>
	<p><a href="#">MOMAN RiderSound-S Helmet Headset User Manual</a></p> <p>Comprehensive user manual for the MOMAN RiderSound-S Helmet Headset, detailing features, operations, installation, and specifications for motorcycle riders.</p>

Documents - Moman – H4M



[MOMAN H4M PLUS Motorcycle Helmet Bluetooth Headset User Manual](#)

User manual for the MOMAN H4M PLUS Motorcycle Helmet Bluetooth Headset, covering setup, operation, features, specifications, and care instructions for motorcycle riders. Includes details on Bluetooth connectivity, music control, FM radio, and AI voice assistant.

lang: **score:16** filesize: 1.18 M page\_count: 2 document date: 2024-06-13



[MOMAN H4M Helmet Headset: User Manual & Features](#)

Comprehensive guide to the MOMAN H4M Motorcycle Bluetooth Helmet Headset, covering setup, operation, features, specifications, and safety information.

lang: **score:15** filesize: 1000.16 K page\_count: 2 document date: 2024-06-21